

## Dairy and Livestock Sales

### Public Auction Register

Closing Date Monday 5 00 P M  
of each week's publication

**MON. NOV. 19 - 12**  
Noon Public Auction of Tools, Adv. Items, Antiques. Located at the corner of State and Locust Streets, Ephrata, PA., Lancaster Co. Jean E. Mentzer, Owner of M.G. Mentzer's Sons. T. Glenn & Timothy G. Horst, Auctioneers.

**TUES. NOV. 20 - 7 PM**  
Public Auction State Graded Feeder Cattle Sale. Located at Amherst Livestock Market, Inc. Intersection of Rt. 29 and 151, Amherst, VA. For information contact Esthmus Carson, Jr. 804-946-7245 or 804-846-3280.

**WED. NOV. 21 - 11 AM**  
Public Auction of Registered and Grade Holstein Milking Herd Dispersal Sale. Located from Rt. 74 north of York. Approx. 3 miles from Rt. 30 by-pass, to Nellie's Restaurant and Brooks Drug Store. Turn west, left, onto Davidsburg Rd., continue west 2 1/2 miles to farm sign on right hand side, or 1/2 mile east of Village of Davidsburg. Paul Jacobs & Alma Stambaugh, Owners. Clair R. Slaybaugh, Auctioneer.

**WED. NOV. 21 - 2 PM**  
Public Auction of 12.4 Acres Farm. Located along Grossman Rd., between Bethany Rd. and Diamond Station Rd., Ephrata Twp., Lancaster Co., PA. Nora S. Burkholder Weaver, Owner. T. Glenn & Timothy G. Horst, Auctioneers.

**THURS. NOV. 22 - 9 AM**  
Public Auction of Butcher Equipment, Farm Equipment and Household Items. Located from Rt. 24 in Starview, R.D. 1, Mt. Wolf, York Co., PA. Mr. & Mrs. Clair Bruaw, Owners. Blaine N. Rentzel, Auctioneer.

**THURS. NOV. 22 - 10 AM**  
Public Auction of Valuable Real Estate, Household Goods & Antiques. Located on the premises at 28 north Sheridan Rd., Newmans town, Lebanon

Co., PA. Minnie Sonnen Estate. John Steffy & Elwood Sonnen, Executors. H.H. Leid Auction Service, John H. Fry, Auctioneers.

**FRIDAY NOVEMBER 23 - 1:30 PM**  
Public Auction Dairy Sale. Located at the Penns Valley Livestock Auction, Centre Hall, PA. Ron Gilligan, Auctioneer.

**FRI. NOV. 23 - 7 PM**  
Public Auction of the Walter Family Club Calf Sale. Located at Shady Lane Dairy Sales, Quarryville, PA. Donald C. Walter & Family, Owners.

**SATURDAY NOVEMBER 24 - 11 AM**  
Public Auction of Horses. Located at Keister's Middleburg Auction Sales, Inc., Rt. 522, 3 miles east of Middleburg, PA., 5 miles west of Selingsgrove, PA. Don & Walt Keister, Owners. Ray Long & Dave Imes, Auctioneers.

**SAT NOV. 24 - Ray B. & Esther M. Bolinger.** Farm equipment and dairy cattle. Located 1 1/2 mi. north of Blainsport along route 897, West Cocalico Twp Auction conducted by Paul E. Martin & John D. Stauffer.

**SAT NOV. 24 - Public Auction of Farm Equipment.** Located along Brunnerville Road, Lititz, PA. Sale by Elam Snyder. E.M. Murry Associates, Auctioneers.

**SAT. NOV. 24 - 9:30 AM**  
Public Auction of Valuable Antiques and Collectibles. Located in the Reamstown Fire Hall, 1 block off Rt. 272, Reamstown, Lancaster Co., PA. H.H. Leid Auction Service, Agent for Owner. H.H. Leid Auction Service, Auctioneers. John H. Fry.

**SAT. NOV. 24 - Public Auction of a 45 Acre Hog and Horse Farm, 3 Acres, Farm Equipment, Etc.** Located on the farm 10 miles northwest of Carlisle, PA. 5 miles north of Newville, off Rt. 641 along Brick Church Rd. James

H. & Margaret Shetron, Owners Ralph W Horst, Auctioneer.

### DECEMBER

**SAT. DEC. 1 - 1 PM**  
Public Auction of a 12 Acre Farmette, Farm Machinery and a 1972 12x65 Mobile Home (1 Acre). Located in East Drumore Twp. Take Rt. 272 13 miles south of Lancaster at the Buck. Turn east on Rt. 372, 1 1/2 miles to farm. OR from Quarryville, go west 2 1/2 miles on Rt. 372. Mobile home is located on Hollow Rd. 1 block from the farm. Richard Baylis, Owner. Kreider & Kline, Auctioneers.

**FRIDAY DECEMBER 7 - Monthly Cow Sale at Mel Kolb, Inc. Lancaster Farm, 2220 Dairy Road, Lancaster, PA.**

FROM A HERD BUILT ON QUALITY AND SOUND MANAGEMENT

### A COMPLETE DISPERSAL

## 90 HEAD

**NOVEMBER 10, 1984 NOON**

### J.V. FARMS

Douglassville, Pa., located: exit Pa. Turnpike, Morgantown, north 176 to 422, east to 662, west to 562, east 2 miles to farm.

J V Jether, A Banner Son Out Of A Victorious Daughter Herd Sire  
Six 469L Heifers 15 Junior Heifers Offered

#### HERD SIRES REPRESENTED

6 Victorious Daughters	New Trend	Big Foot
4 Justa Banner	Klondike Banner 469L	PS Vindicator
3 Sundance	Transformer 307K	SSR Havre King 714
Hurrah	Klondike West 84F	SSR Promotor 723
Vindicator	Front Page	

Some cattle equipment also available for sale

#### AUCTIONEER

Dale Stith  
(502) 828-8253

Ernie Smith  
(614) 269-0715

#### OWNER:

**JESSE E. TERRY**

RD 2, Box 518  
Douglassville, Pa. 19518  
(215) 689-9565  
Herd Advisor: Erskin Cash, Pennsylvania State University

#### FOR CATALOGS CONTACT:

**THELMA W. MILLS**

23500 Pleasant View Lane  
Gaithersburg, Md. 20879  
(301) 253-2992



## GREENCASTLE

LIVESTOCK MARKET

GREENCASTLE PENNA 17225

## Special Feeder Cattle Sale

Greencastle Livestock Market, Inc.

**FRIDAY EVENING, NOVEMBER 9, 1984**

@ 7:00 P.M.

Consignments of steers, bulls & heifers of all breeds & sizes are welcome. If you have cattle to consign call our office & we will advertise them for you. Consignments of any number accepted. Livestock will be accepted from 9 A.M. until 5 P.M. sale day.

#### Consignments For This Sale Include

- 50 Head Angus Bull Calves Weighing 400 to 600 lb.
- 50 Head Angus Heifer Calves Weighing 400 to 550 lb
- 25 Head Angus Steers Weighing 600 to 700 lb.
- 20 Head Charolais Steers & Heifers Weighing 400 to 500 lb
- 2 Charolais Service Age Bulls

Our regular Livestock Sale, of all kinds of butcher cattle, cows, calves, hogs & sheep is held every Monday eve. at 6 P.M.

Livestock received every Monday from 8 A.M. until ?

Thank You for Your Past Patronage

Hay & Straw sales start Monday, Nov. 9, 1984 @ 1 P.M. and continue every Monday thru next Spring.

#### GREENCASTLE LIVESTOCK MARKET, INC.

P.O. Box 86, Greencastle, PA 17225

Phone: Office 717-597-9935 Jay 717-789-3227 Jim 301-739-4470

## SPECIAL FEEDER & REPLACEMENT CATTLE SALE

**MON. EVE., OCT. 29, 1984**

7:30 P.M.

**750 - 1000 HEAD STEERS & HEIFERS**

Calves and Yearling Cattle.

All Cattle Are Strictly Farm Fresh.  
No Trader Cattle.

For further information contact:

Thomas Eagle (703) 459-4402  
Harry Gochenour (703) 459-4778

**Woodstock Livestock Market, Inc.**

Woodstock, Virginia

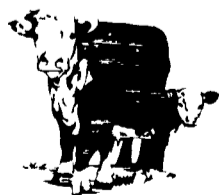
US Rt. 11

## "SPECIAL" FEEDER SALE

TUESDAY  
OCTOBER  
30

7 P.M. SHARP!

**WESTMINSTER**  
Livestock Auction  
Phone 301 848-9820



## FEEDER CATTLE SALE!

Wednesday - Oct. 31

7 00 PM

Cattle received from 8 AM

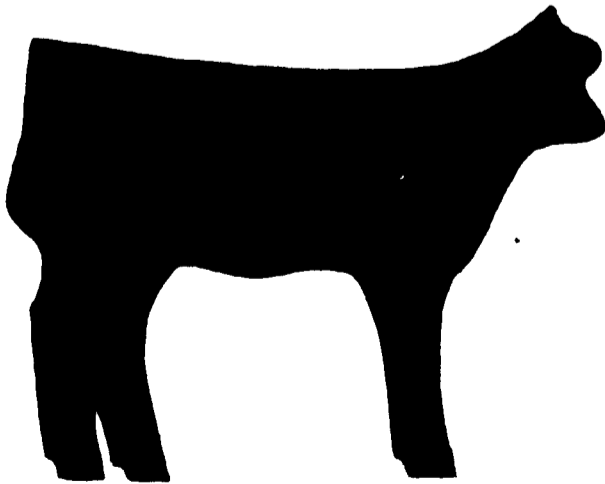
**Four States Livestock**

Hagerstown, MD

Call 301-733-8120

# WALTER FAMILY CLUB CALF SALE

**NOVEMBER 23, 1984 7:00 P.M.**



50 Select top individuals. All calves halterbroken, on feed and ready to go to work for you. Don't Miss this spectacular offering of show prospects.

**DONALD C. WALTER & FAMILY**

**RD 2 Box 153**

**Airville, PA 17302**

**717-862-3366**

**Sale Location:**

**Shady Lane Dairy Sales**

**Quarryville, Pa.**