

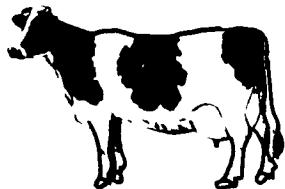
Dairy and Livestock Sales

Public Auction Register

Closing Date Monday 5:00 P.M.
of each week's publication

SOUTHEAST SHOW WINDOW SALE

at the
Rockingham
County
Fairgrounds
Harrisonburg,
Virginia



THURSDAY, NOVEMBER 1, 1984
11:00 A.M.

**80 HEAD OF QUALITY
HOLSTEINS - 80**

A large number of fresh young cows that are already scored Very Good or have the potential to be Very Good or Excellent; also a group of bred heifers from great cow families. A few young animals with tremendous pedigrees also sell.

There are animals being sold in this sale that will please you regardless of your needs. Plan to be with us on the above date.

**Sale Sponsored by
State Holstein Associations of
Delaware, Maryland, North Carolina,
Virginia and West Virginia**

For catalog contact
REMSBURG SALE SERVICE
P.O. Box 177
Jefferson, Maryland 21755
Phone 301-473-8214

THURS. NOV 15 - 11
AM Public Auction of Tractors, Farm Machinery & Trucks. Located near Queen Anne, MD. Rt. 404 to 309 - (Queen Anne - Cordova Rd.) Going towards Cordova, pass RR tracks, take the first road left, then left again, first farm on left. Signs posted from Rt. 404. Mr & Mrs Charles C. Connolly, Owners. Harry Barrett

& Chester Lee Carroll,
Auctioneers

THURS. NOV 15 - 6 PM
Public Liquidation Auction of Country Store Inventory & Real Estate. Located along Rt. 25 in the village of Sacramento, Schuylkill Co., PA. Ruth Stehr, Owner. Mike & George Deibert, Auctioneers.

THURS. NOV. 15 - 9:30
AM Public Auction of Antiques, Personal Property

and Real Estate Located at 800 Madison Ave., York, PA. Harold L. Mathews Estate. Evelyn W. Mathews, Owner. Blaine N. Rentzel, Auctioneer

THURS. NOV. 15 - 11
AM Public Auction of Farm Machinery Bankruptcy Sale Located 1 mile south of Rt. 40 on Rt. 896. Bear, DE. Stephen W. Spence, Trustee. Iron Hill Auction,

Inc., Joe B. & Larry D. Baines, Auctioneers.

FRIDAY NOVEMBER 16 - 6:30 PM Public Auction of Feeder Cattle and Feeder Pigs. Located at Keister's Middleburg Auction Sales, Inc. Rt. 522, 3 miles east of Middleburg, PA., 5 miles west of Selinsgrove, PA. Don & Walt Keister, Owners. Ray Long & Dave Imes, Auctioneers.

FRIDAY NOVEMBER 16 - 5:30 PM Gap Auction. Antiques and Household Goods sold at every auction. Located off Rt. 41, Lancaster Turkey Hill Mint Market, cross RR bridge, Ira Stoltzfus & Son, Auctioneers.

FRIDAY NOVEMBER 16 - 10 AM Public Auction of Farm Machinery. 1 PM Sale of Valuable 105 Acre Dairy Farm Real Estate Located in East Drumore Twp. approx 18 miles south of Lancaster on Rt. 272 East to Tanglewood Golf Course, East on Scotland Rd. to Center Rd. Turn right on Conowingo Rd. First lane on right Or from Lancaster Rt. 222 south of Quarryville. West on Scotland Rd. left on Conowingo Rd. 1 1/2 miles to farm on right. Pine Valley Farms, Glenn & Dave Hess, Owners. Kreider & Kline, Auctioneers

SAT NOVEMBER 17 - Large Public Sale at 9 AM. Located: 1 mile NW of Goldsboro, along Rt. 262 and 2 miles west of Three Mile Island, in York Co.,

PA. Farm Equip., Truck, Guns, Tools, Some Household. Curvin R. Snyder, Owner. Clair R. Slaybaugh, Auctioneer

SAT. NOV. 17 - 2 PM Ray B & Esther M. Bollinger. 91 acre Dairy & Poultry Farm. Located 1 1/2 mi. north of Blainsport along Route 897, West Cocalico Twp., Lanc. County, PA. Auction conducted by Paul E. Martin & John D. Stauffer.

SAT NOV 17 - 9:30 AM Public Auction of Real Estate, Farm Machinery, Hay, Silo Unloads, Household Goods, Antiques, Corn Silage and Hand Tools Located in Lancaster Co., PA., 1 1/2 miles south of Gap on South Gap Rd. From Rt. 41 cross over new railroad bridge. Turn left, follow Gap Rd. After 1 mile, turn left on gravel road Christian K. Lapp Estate. Naomi & Thomas C. Lapp, Executors. Steve Petersheim, Auctioneer

SAT NOV. 17 - 10:30 AM Public Auction of the Carriage House Bar Selling Real Estate, Antiques, Collectibles, Farmall M Tractor, Household & Misc. Items. Located 6 miles east of Klingerstown, PA., 8 miles northwest of Hegins, 2 miles west of Franklin Square and Rt. 125, in the village of Hepler. Donna J & William D. Zimmerman, & William Wehry, Owners. Dockey, Dockey & Depen, Auctioneers

SAT NOV. 17 - 9 AM Public Liquidation Auction of Country Store Inventory and Real Estate. Located along Rt. 25 in the village of Sacramento, Schuylkill Co., PA. Ruth Stehr, Owner. Mike & George Deibert, Auctioneers

SAT. NOV. 17 - 3 PM Public Auction of the 1984 Southeast District 4-H/FFA Club Calf Sale. Located at New Holland Sales Stables, New Holland, PA. For information contact Cheryl A. Fairbairn, 215-696-3500 or Chet Hughes, 717-394-6851.

SAT. NOV. 17 - Public Auction of Central Juniata Co. Real Estate. Located in Spruce Hill Twp. For info. contact Long's Auction Service, Auctioneers.

SAT. NOV. 17 - 9 AM Cumberland Co., RD. Mechanicsburg, PA. Farm Mach. and Tool Auction. Mrs. John Enck, Owner. Kling's Auction Service.

SAT. NOV. 17 - 9:30 AM Public Auction of a Collection of over 250 Clocks, Antique Furniture, Antiques, Collectibles, Dishes, Tractor, Equipment, Tools, Lumber, Gun & Household Goods. Located approx. 4 miles east of Elizabethtown or 1 mile south of Lykens, along Rt. 209 in village of Big Run, Dauphin Co. Hiram H. Malick, Owner. David D. Deibler & Ed Shoop, Auctioneers.

SAT NOV. 17 - 10 AM Public Auction of Tools, Equipment, Household Goods, Sporting Goods, Etc. Located near Martins Corner. From Rt. 340, take Creamery Rd., north to Martins Corner Rd., turn right to sale. Nelson K. & Diane L. Walter, Jr., Owners. Alvin Horning, Auctioneer. Horning Farm Agency, Inc.

SAT. NOV. 17 - 2 PM Public Auction of a 94 1/2 Acre Lanc. Co. Farm. Located along Newport Rd., Litzitz, PA. Take Rt. 501 north of Litzitz, PA. approx. 2 miles to Newport Rd. Turn west to farm. Levi F. Hertzog Estate. J. Omar Landis Auction Service, Auctioneers

SAT. NOV. 17 - 10 AM. Located along Rt. 222 about 3 miles south of Quarryville, East Drumore Twp., Lanc. Co., PA. (Just before Mechanics Grove; Watch for signs). Public Sale of Real Estate (2 1/2 Story Brick House), fine furniture, fine antiques, household goods & guns. Sale by Charles Eckman. Howard Shaub & Roy C. Probst, Auctioneers.

FALL HEIFER SALE

FRIDAY EVENING, NOVEMBER 2, 1984

AT 6:00 P.M.

AT THE BELLEVILLE LIVESTOCK MARKET

250 — 300 HEAD

Selling heifers all sizes, open, bred, springing, some registered. When your Vet is blood testing, we suggest you have all heifers pregnancy checked or checked to be sure they are breeders and have a Vet. certificate along with cattle. If not checked, cattle will be sold "AS IS".

For more information, phone market.

RESTAURANT WILL BE OPEN.

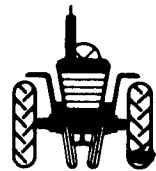
BELLEVILLE LIVESTOCK MARKET
717-935-2146

PUBLIC AUCTION

**HI GRADE HOLSTEIN HERD - REAL ESTATE
FARM MACHINERY - 3 JOHN DEERE DIESELS
TRACTORS**

THURSDAY, NOVEMBER 1, 1984
9:30 A.M.

Located in Cecil County, MD, 8 miles south of Oxford, PA,
4 miles north of North East, MD, along Route 272.



94 HEAD

75 milk cows, approx. 20 milking with 1st calf, 8 bred heifers, 13 calves to breeding age, pure bred bulls and A1 breeding for past 15 years. Approx. 40 head with registration papers available. ABS breeding, 30 day charts, pregnancy checked. An opportunity to buy cattle with potential.

HOLSTEIN HERD-1:00 P.M.

TRACTORS & LOADER

John Deere 5020 diesel, standard shift, 4567 original hours, 20-8-38 tires, good rubber, set of dual wheels sold separate, front and rear weights sold with tractor; John Deere 4020 diesel, standard shift, wide front, good rubber, roll guard canopy; John Deere 4010 diesel, narrow front (all in good running condition); John Deere 158 heavy duty loader, 7 ft. bucket, 3 ton breakaway.

FARM MACHINERY-TOOLS-ETC.

John Deere 360 plow, 7 16 in. bottoms, automatic reset; John Deere 1610 12 tooth chisel plow, 3 pt., John Deere 4 row front mount cultivators; John Deere midwest type harrow; John Deere 3 pt, 7 ft. bar mower; 3 pt 4 row cultivator; White 6 row corn planter w/no til coulters; New Holland 852 round baler; 3 pt. Hesston fork bale mover; 3 pt. bale mover distributor; John Deere 3960 forage harvester, corn & grass head, corn head 2 row, needs work; 244 Snapper, sells separate; Huskee 12 row boom sprayer, poly tank, John Deere PTO roller pump; Badger forage wagon; New Idea 279 9 ft. conditioner; Knight Big Auggie 12C mixer feed wagon w/scales, in good condition, shaver post driver; 3 pt; International 580 manure spreader w/hydraulic endgate needs work; Oliver grain drill; John Deere 494 corn planter, needs work; John Deere 66 forage blower; New Holland blower; John Deere 3 pt. scraper blade; farm hand 5 wheel rake; 2 flatbed wagons; John Blue pressure pump; Fairbanks platform scales, 1000 lb. capacity; 8 in Mayrath grain auger; 1 horse trailer, needs work; Army trailer; 41 Chevrolet truck with dump bed; 40 ft. 3/4 in. log chain; 2 ton come-along tractor chains; wheel weights; 20 ton hydraulic jack; air compressor; 96 drawer bolt bin, stocked, pipe threaders; new wheels; round bale feeder; 2 wagon loads small items sold first, then farm machinery, then cattle

REAL ESTATE-HARVESTORE SILOS-TANK-PARLOR

THURSDAY, NOVEMBER 15, 1984

1:00 P.M.

Same Location

REAL ESTATE consists of 140 Acre dairy farm which will be offered in 3 parcels and as an entirety:

Lot #1 - 40 acres on South Side

Lot #2 - 30 acres on North Side

Lot #3-70 Acres with improvements which consist of a 98 cow capacity free stall building; double four milking parlor, loafing shed; 2 1/2 story 4 bedroom brick house; approx. 2,000 ft. road frontage; 2 Harvestore silos, 20x80 w/Goliath unloader, white top, new 8 years; 20x50 blue top; 800 gallon milk tank, Sta-rite parlor complete system, automatic take-offs; silos, tank and parlor sold separate pending sale of Real Estate

For inspection of Real Estate call for appointment at 301-658-6581 or drop in at random between chore hours

10% down Sale Day - Final Settlement 30 days

Auctioneer:

Steve Petersheim
717-786-4624
Lic. #AU-001349-L

Owner:

RALPH & LORETTA MILLER