

**PUBLIC AUCTION****CONSTRUCTION EQUIPMENT  
CARS, TRUCKS, LOADERS, ETC.****FRIDAY, FEBRUARY 15, 1985**

11 A.M.

FELTON, DELAWARE

Attention Contractors & Equipment Dealers  
Consignments are now being taken**Consign Now****Call or write us for consignment forms.**

Chester Lee Carroll

Harry Barrett, Jr. Sls. Mgr.

P.O. Box 307, Felton, Delaware 19943

302/284-4911

302/284-4541

**Carroll's  
Sales co.**P.O. BOX 307, U.S. RT. 13  
FELTON, DELAWARE 19943

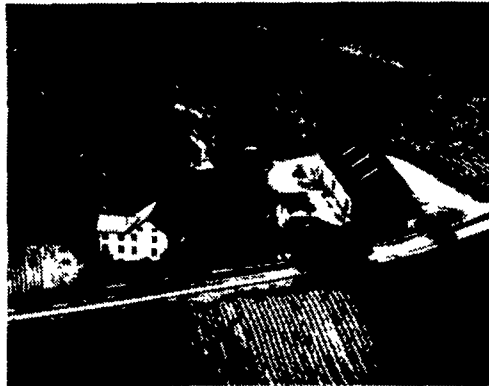
302/284-4911

302/284-4541

**PUBLIC AUCTION****56 ACRE FARM  
ANTIQUES, HOUSEHOLD ITEMS  
WEDNESDAY, OCT. 31, 1984**

Real Estate at 11:00 A.M.

Barn &amp; Household Items 10:00 A.M.

LOCATION: Take Rt. 272 to 1st inter-  
sect. south of WDAC radio tower. Go  
west on Rawlinsville Ave. to AUCTION on  
left. Providence Twp. Lanc. County, Pa.  
Watch for AUCTION SIGNS.**REAL ESTATE** consists of 56 acres + total. 2-  
2½ story frame houses, barn, 12 acres &  
tillable on southside of Rawlinville Ave.  
Balance of 44 acres + being North & West of  
Rawlin. Ave. UNIT #1: Large farm house  
w/kitchen, livingroom, diningroom, 4  
bedrooms, full bath on 1st and 2nd floor, full  
basement, oil fired hot air heat, 52 gal. water  
heater and attic. Second house, now being  
rented, has kitchen, living and dining rooms, 2  
bedrooms, 1 bath, ½ basement, oil fired hot air,  
52 gal. water heater, attic, storm screen doors  
and shingle roof. BANK-BARN: is 36'x92', built  
in 1969, space for 4 acres tobacco, stripping  
room, hay storage and in new condit. Out-  
buildings: bunk house, shop area, and wooden  
sheds. Add 12 acres +/-land.UNIT #2: 42 acres +/-TILLABLE land in high  
state of cultivation.**NOTE: REAL ESTATE** will be offered in two  
UNITS. Unit #1: 2 houses, barn and 12 acres  
+/-, ideal for horse farm or gentleman farmer.  
Unit #2: 44 acres +/- These parcels will also be  
offered by the entirety as 56 acres with  
buildings.**TERMS** on Real Estate: 10% down day of sale;  
10% down day of settlement which is on or  
before Dec. 31, 1984. **OWNER FINANCING**  
**AVAILABLE** or with **HAMILTON BANK**.  
**CHECK WITH AUCTIONEER FOR IN-**  
**FORMATION About FINANCING. REAL**  
**ESTATE Inspection: By Appointment Only.**  
Call AUCTIONEER at 717-569-2079.**ANTIQUES**Adrian and Oak Ingraham Co. mantel clocks,  
"Authentic History of Lanc. County" by J.J.  
Mombert D.D. dated 1869, **BRASS POWDER**  
**FLASK**, Wm. McKinley & Roosevelt camp  
buttons, Bead purses. **TIN:** cigarette box,  
cookie cutters, bank, 'JIMMY CRICKET'  
mech TOYS, Line Mar Toys, Walt Disney Prod.  
in excel. condit., "Sea Ledges" signed Wallace  
Nutting other W. Nutting Prints, Wickham  
Phila. derby w/hat box, Chesterfield coat  
w/fur collar excel. condit., Roseville nest of  
bowls, mini. Ger. stem, linens, baskets, cast  
iron trivet, troughs, oak pict. frames and towel  
rack. **AUTOMOBILE:** 67 Dodge Polara, 4 door,  
AT, PS, 75,000.**HOUSEHOLD, BARN ITEMS****GRAINED BLANKET CHEST**, wing chair,  
book, and plant stands, drop leaf card table,  
wicker sewing cabinet, blonde bedroom suite,  
dresser w/mirror, birds eye maple vanity,  
**LARGE DRAFTING TABLE** w/5 drawers &  
stool, 32 ft. Alum. exten. ladder, 8 mm Revere  
Movie Project, 10'x14' Miraz oriental style rug,  
G.E. refrig. various small appliance, books,  
records, Xmas decor., planters, lamps, elect.  
motors, lawn, garden and sm. shop tools, tree  
pruner, barn fan, 7300 **TOBACCO LATH** and  
many items too numerous to mention. **PER-**  
**SONAL PROPERTY** Inspection at 9:00 A.M.  
day of sale.**TERMS:** Cash, certified check or established  
customer checks.**AUCTION BY****ARTHUR E. &  
ELIZABETH H. KURTZ**

J. Elvin Kraybill, Att.

Auction Conducted by:

**AMERICAN AUCTION SERVICE**

Kenneth Welsh, Auct.

Manheim, Pa.

Alfred G. Reist, Auct.

AU-001637L

Lanc, Pa. 717-569-2079

Lunch by

Smithville Church of God

**Public Auction Register**Closing Date Monday, 5 00 P M  
of each week s publicationSAT. NOVEMBER 10 -  
9:30 AM Public Auction of  
the Gap Relief Sale.  
Located at Martins Sale  
Barn, Rt. 340 and New  
Holland Rd., East of Inter-  
course, PA. Leon D. Kurtz  
& Others, Auctioneers.SAT. NOV. 10 - Phares  
S. & Annie S. Zartman,  
Real Estate, Antiques,  
Household Goods, Car,  
Truck, and Horse Trailer.  
Located in village of  
Durlach, Clay Twp., Lanc  
County, PA. Auction Con-  
ducted by Paul E. Martin  
& John D. Stauffer.SAT. NOV. 10 - 7 PM  
Public Auction of the  
1984 Piedmont Invita-  
tional Club Call Sale.  
Located on the FrederickFairgrounds, Frederick,  
MD. Ollie Bennett, Auc-  
tioneer.SAT. NOV. 10 - 10:30 AM  
Public Auction of a 2 Acre  
Farmette, Household Fur-  
nishings, Antiques, Col-  
lectibles, Tools & Equip-  
ment. Located 1 mile east  
of Dornsife; 6 miles west  
of Trevorton; 12 miles  
south of Sunbury; turn  
south off Rt. 225 at  
Wayside Mission Church.  
Harry A. Wiest & Helen M.  
Wiest, Owners. Mike &  
George Deibert, Auc-  
tioneers.SAT. NOV. 10 - 10 AM  
Public Auction Special Fall  
Sale of Hardware -  
Damaged and Excess  
Merchandise. Located at  
Bombergers Store, Elm,PA. E.M. Murry Assoc.,  
Auctioneers.SAT. NOV. 10 - 9 AM  
Public Auction Inventory  
Reduction Sale of new and  
used Electrical Equip-  
ment. Located 1 mile east  
of Ephrata, 852 E. Main  
St., Rt. 322 or ¼ mile  
west of Rt. 222 and Rt.  
322 interchange. Edgar  
H. Martin Elec. Supplies,  
Owner. T. Glenn Horst &  
Timothy G. Horst, Auc-  
tioneers.SAT. NOV. 10 - 1:30 PM  
Public Auction of 100  
Acre Farm. Located ap-  
prox. 12 miles from  
Williamsport, PA. Take  
Bloominggrove Rd. from  
Williamsport to Balls Mills  
then follow auction signs  
to Rose Valley Lake. Farm  
is located next to Lake on  
Trimble Rd. Leona Weikle  
& Kenneth Bastian, Ex-  
ecutors. Kenneth Young,  
Auctioneer.SAT. NOV. 10 - 11 AM  
Public Auction of the  
Frenrick Farms Complete  
Registered Herd Disper-  
sal and Produce Sale.  
Located in Wysox, PA  
George L. & Dorothy L.  
Kerrick, Owners.  
Rockwell Auction, Inc.,  
Sales Mgrs.SAT. NOV. 10 - Public  
Auction of Lumber and  
Farm Related Items.  
Located on the Fort Zeller  
Farm, Newmans town,  
Lebanon Co., PA. Mr. &  
Mrs. Eugene Hoffman,  
Owners. Arthur  
Copenhagen, Auctioneer.SAT. NOV. 10 - 9 AM  
Public Auction of Anti-  
ques, Household Goods  
and Guns. Located along  
River Rd., just south of  
Highville, R.D. 2, Con-  
estoga, PA (along road  
leading from Safe Harbor  
to Highville; watch for  
signs). Jacob B. Bleacher  
Estate. Howard Shaub &  
Roy C. Probst, Auc-  
tioneers.**GAP AUCTION****FRIDAY EVE., NOV. 2**

5:30 P.M.

Located off Route 41 - Lancaster Avenue Op-  
posite Turkey Hill Minit Market - Cross RR Bridge**ANTIQUES AND HOUSEHOLD GOODS****SOLD AT EVERY AUCTION****CONSIGNMENTS ON MONDAYS**  
**FROM 8:00 A.M. to 7:00 P.M.****IRA STOLTZFUS & SON, Auctioneers**

442-4936 or 442-8254

AU000907-L

**CONDUCTORS ALL TYPES PUBLIC SALES****PUBLIC AUCTION****SATURDAY, NOVEMBER 3, 1984**

9:00 A.M.

**ANTIQUES-HOUSEHOLD ITEMS-  
HARNES & FARM MACHINERY****LOCATED:** 9 mile west of York, Pa. off Rt. 30 at Rambler Inn,  
south on Jackson Square Rd., - 1st farm.**ANTIQUES**Set of 6 plank bottom chairs, 6 oak dining room chairs w/cane seats, plank  
bottom rocker, oak bedroom suite (bed, wash stand, dresser), cane rocker,  
Victor Grafenola, Zeither, blanket chest, oak stands, Grafenola stand,  
wash stand, cane chairs, rope bed, 2 - dry sinks, wood box, doughtray,  
spinning wheel, flax wheel, antique high chair, individual school writing  
desk, gold leaf frames, & mirrors, wooden wall cabinets, butter churns - 2  
glass - 1 wooden), treadle sewing machine, oak extension tables (1-4 leg &  
1-5 leg), jelly cupboard.**OLD CHERRY 2 PIECE CORNER CUPBOARD** W/16 GLASS PANES  
**IN DOORS.** Oval marble top stand, Columbian cook stove, copper tub  
washer, 3 wooden butcher benches, 3 wooden tubs, childs plank bottom  
chair, Empire chest of drawers, love seat & 2 matching chairs, baskets,  
flax comb, vanity, 1905 wooden sled (made by Thomas of Thomasville),  
Buffalo robe, goblets, gold edge water set (pitcher & 6 glasses), cut &  
pressed glassware, carnival vase, 2 rayo lamps, assortment of kero lamps,  
old badges, shaving mirror & stand, brass bucket, flat irons, glass table set  
w/holder, salt & peppers, lap robe (Lion design), quilts, blankets,  
w/coverlets, braided rugs, dutch oven, meat grinder, sausage press, lard  
cans, 2 meat saws, crocks & jugs, various sizes, cameras.. Cap & Ball muzzle loader - 1836 Harpers Ferry, sleigh bells, double set of  
driving harness (used in funerals), single driving harness, bridles, horse  
collars, harness, lines, buggy whips, lanterns, homemade brooms, single -  
double & triple trees, carpenter tools for making coffins, post hole tools,  
wooden molding planes, antique wooden jig saw, buck saw, 6 prong wooden  
shaking fork, 2 giggers, milk cans, cider press, cradles, wagon jack,  
stillard scales, wagon seat, saddle bench, rope snaps, horse tongues &  
yokes.Frick Model A 20x34 Threshing machine No. 6970 w/feeder, McCormick  
Deering 7 ft. grain binder - (BOTH LIKE NEW). John Deere 999 corn  
planter, 24 blade McCormick disk, 2 - 2 section spring harrows, wooden  
wheel wagon w/box, scoring out plow, potato plow, hay ladders, land  
roller, fanning mill, old car jacks, New Holland Baby Wood saw, Mount-  
ville fother shreader, McDeering horse mower, McDeering riding culti.,  
Imperial horse plow, extra shears, ferring out shovels, garden tools, 50 ft.  
double endless belt, dehorner, burlap bags, ½ hp. motor, scalding trough,  
binder twine, brooder stove, feeders, iron seats, International Harvester  
freezer, Kelvinator ref., etc. Wooden toy Thresh machine, wooden toy  
steam engine.**AUCTIONEER'S NOTE:** This merchandise is all in very good condition &  
many unusual pieces, all machinery kept in dry & like new condition. We  
will sell farm related items 1st, then Antique Household items &  
Glassware.**TERMS: CASH OR GOOD CHECK****AUCTIONEER:**

Blaine N. Rentzel &amp; Assoc.

Emigsville, Pa.

717-764-6412

Pa. Auctioneer's Lic. #761

**JOHN H. FISHEL**

R.D. #1

Thomasville, Pa.

**ESTATE  
AUCTION****LARGE 2 DAY  
ESTATE AUCTION****OF THE JAMES C. KEISER EST.**Of Muddy Creek Forks  
of York Co., PA**MILL RELATED ITEMS, TOOLS,  
GROCERIES, STORE EQUIPMENT  
& ANTIQUES****FRIDAY, NOV. 2, 1984**

at 10:00 A.M.

**SATURDAY, NOV. 3, 1984**

at 9:00 A.M.

Sale to be held on the premises in  
Muddy Creek Forks, York Co. approx. 5  
miles southwest of Rt. 74, turning at the  
Brogue Post Office or approx. 5 miles off  
Rt. 851, turning at the square in Fawn  
Grove & following signs to place of sale.**FRIDAY, NOV. 2 at 10 A.M.**Lots of bolts & hardware; nails; pitch forks;  
ice saws; butcher kettles; plow & cultivator  
handles; spring wagon seat; mill wright  
horses; tobacco baler; kerosene grain  
steamer; 3 ant. cutter sleighs & shafts;  
walking plows; manure spreader; corn  
planter; Mayrath 30 ft. 8 in. PTO auger; air  
compressor; cultivators; trailer wheels &  
axles; barrels; double & single trees; ext.  
ladder; pile of baled straw; feed trunks; pot  
belly stove; salamander heater; fencing  
boards; approx. 100 4x4 pallets; bag trucks; oil  
& grease buckets; 8 HP Turf King riding  
mower; 7 HP snow blower; wheelbarrows; lg.  
platform scales; 1 hole corn sheller; moisture  
tester for grain; approx. yr. 1950 ant. Dodge  
truck w/hoist, 21,000 GVW; & many mill  
related items & antiques not mentioned. Very  
nice 1946 (Red Belly) Ford 8N tractor.**SATURDAY, NOV. 3 at 9 A.M.**Beginning with a full line of groceries &  
general store items, medicine & apothecary  
bottles; some clothing & socks; stockings;  
mens overalls, etc.; full line of store equipment  
shelving & counters; double faced wooden  
store shelves; soda cabinet; ice cream  
cabinet; meat & produce cabinet; Hill 12 ft.  
frozen food case; Hill meat case; Toledo  
computing scales; Hill 6 ft. produce case; 8 ft.  
frozen food case; candy case; lg. York Safe &  
Lock Co. safe; desk; desk chairs; Royal  
typewriter; paper cutters; hardware scales;  
ant. coffee grinder; Ant. Clarks spool cabinets;  
ant. folding store racks; seed displays; several  
ant. brass gas light fixtures; very old man-  
nequins; several old trunks; many store boxes  
w/labels; ant. tables; signs & display items;  
household items & furniture; Frigidaire top  
loading portable dishwasher, like new; ¾ high  
oak bed; & many items too numerous  
to mention.Store equipment, furniture & lg. antiques will  
be sold at 12:30.

Terms: cash or approved check only.

**MAMIE V. KEISER, owner**

Bob &amp; Tom Sechrist, auctioneers

Andersons &amp; Sechrist, clerks

Lic. # 820 &amp; 821

Not responsible for accidents  
Refreshment rights reserved