

**SULBRA COUNTY DHIA
August 1984**
Records made on A.M.-P.M. Alternate Method
are designed by A.
Rolling Herd Averages-(650 Lbs Butterfat And Over)

OWNER	BREED	NO COWS	% DAYS IN MILK	LBS MILK	LBS FAT
Richard R Higley	3	87 5	83 8	17,625	735
Dennis Vickie Boyd	3	32 5	82 3	19,805	706
Raymond Norconk	3	41 6	85 3	18,915	705
Lambert Farms	3	119 4	89 8	18,587	691
William B Hart	3	72 5	88 6	17,574	657
William Hottenstein	3	54 6	81 4	18,035	654

Completed Lactations Of 750 Pounds Or More of Butterfat

OWNER NAME OR NUMBER	AGE	DAYS IN MILK	LBS MILK	% FAT	LBS FAT
Richard R Higley					
Gerry	3 10-10	305	20,703	4 7	976 9
Loyal	3 4 5	305	20,990	4 3	900 3
Tara	3 3-6	305	21,433	3 8	821 2
Mount-Top Vue Farm					
Rachel	3 5-3	305	20,924	4 4	928
Becky	3 4-0	305	18,802	4 1	762
Lambert Farms					
Elaine	3 3-0	305	26,015	3 4	886 2
Meg	3 4-3	305	20,326	4 1	837 3
Twila	3 5 0	305	24,291	3 3	792 4
Charity	3 6-2	305	23,110	3 4	792 5
Jumbo	3 4-11	305	27,470	2 9	791 4
Cassie	3 3-7	305	20,189	3 9	782 2
Nicole	3 6-5	305	22,020	3 4	739 5
Diane	3 4-11	305	15,492	4 6	716 4
Yvonne	3 2-1	305	16,659	3 9	645 1

Idal	3	4 4	305	17,045	3 7	624 3
Jamiesue	3	2 3	303	12,670	4 0	505 1
RL&Tracy McCarty						
Bertha	3	7 1	305	21,640	3 9	852 5
Lucinda	3	3 5	305	19,919	3 9	784 2
Tulip	3	3-11	305	14,677	4 8	711 3
Kara	3	3 10	305	17,784	3 8	677 2
Diamond	3	5-9	294	18,893	3 6	673 4
Terry	3	4-5	305	16,071	4 1	660 3
Maggie	5	3-0	305	15,840	4 1	646 2
Gina	3	2-6	305	14,338	4 0	571 1
Hope	3	3-7	261	16,407	3 4	561 2
Imperia	3	4 3	256	13,284	4 1	547 3
Lizzy	3	2 0	305	12,018	4 4	533 1
Jemi	3	2 4	305	13,534	3 8	520 1
William Hottenstein						
Lottie	3	7 8	305	22,622	3 7	832 5
Martini	3	7 8	295	22,542	2 8	624 5
Cara	3	3-3	294	19,381	3 1	598 2
Raymond Norconk						
Lee	3	4-10	305	22,290	3 5	786 3
Little	3	2 7	267	13,025	3 9	510 1
CE Arey&R Coombs						
Meg	3	6-2	305	20,956	3 7	784
Sharon	3	3-0	305	18,821	3 8	724 2
Satin	3	3-1	305	14,915	4 3	638 1
Ed Campbell						
Poopsie	3	9-6	305	19,354	3 8	739
Jane	3	3-11	305	16,387	4 0	649 2
Dennis Vickie Boyd						
Camy	3	7-7	233	18,087	4 0	730 6
Kevin L Ferris						
Mamie	3	5-7	305	19,345	3 8	726 2
Joyce	3	4-7	305	18,836	3 8	713 3
Maggie	3	6 9	305	19,949	3 5	708 5
Cherish	3	3-9	305	19,189	3 6	684 2
Freckis	3	7-8	305	17,204	3 8	653 6
Moore	3	3-8	305	14,455	3 9	563 2
Jessie	3	4-6	305	14,840	3 8	559 3

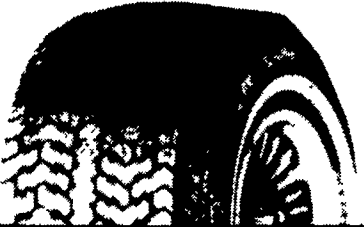
Mifflin Co. DHIA

(Continued from Page E2)

Ed Glick	H	9 9	19 668	755	615
Irene	H	8 0	20,191	834	616
Joseph T Hartzler	H	5 1	20,939	764	647
Elva	H	10 3	21,354	884	659
Rex	H	6 3	20,921	773	693
Joseph E Kurtz	H	4-1	21,485	815	660
Diane	H	2 6	17,594	822	596
Shelly	H	6-6	19,329	761	597
Diamond	H	4-2	19,986	796	647
David T Hostetler	H	3 0	17,885	880	641
#95	H	5-1	18,868	762	624
James G Laughlin	H	5-9	21,207	805	633
Kola-28	H	0-0	18,367	756	628
Daisy 20	H	4-0	20,239	769	616
Holly-1	H	2-6	21,243	782	618
Ronald R Kanagy	H	5-6	18,359	782	618
#34	H	4 6	22,661	889	719
Aquilla Yoder	H	0-0	22,746	892	732
#16	H	4-3	20,330	865	671
#97	H	6 3	18,758	831	664
#4	H	0-0	17,795	770	615
#72	H	0-0	19,650	794	626
Jesse L Spicher	H	0-0	18,503	810	613
Sue	H	5 5	19,695	798	627
Bill & Karol Wingert	H	3 0	22,678	814	699
Jerry	H	6 10	20,353	759	608
A Fred King	H	4 3	21,201	817	682
#14	H	4 0	21,334	835	680
Sue	H	3 1	18,463	805	589
Lee D Yoder	H				
Maude	H				
Kenneth M Yoder	H				
Dee	H				
Flo	H				
Nell	H				
Enos J Kurtz	H				
#4	H				
#10	H				
Marvin E Peachey	H				
Jackie	H				
Sparkle	H				
Fran	H				
Marlite	H				

BEAT THE RUSH...
Buy Them While They Last

All Season Radial



SIZE	REPLACES	COST
P155/80R13	—	\$36.25
P165/80R13	AR78-13	\$38.00
P175/80R13	BR78-13	\$39.50
P185/80R13	CR78-13	\$40.50
P185/75R14	CR78-14	\$43.00
P195/75R14	D/ER78-14	\$44.00
P205/75R14	FR78-14	\$46.50
P215/75R14	GR78-14	\$48.50
P205/75R15	FR78-15	\$48.25
P215/75R15	GR78-15	\$51.00
P225/75R15	HR78-15	\$53.00
P235/75R15	LR78-15	\$56.50

- 2 Polyester Body Plys
- 2 Steel Belts
- Whitewall

Steel Belted Metric Radial



SIZE	COST
155 SR12	\$31.50
155SR13	\$34.00
165 SR13	\$35.80
175 SR14	\$42.00
165 SR15	\$42.00
175/70SR13	\$40.50
185/70SR13	\$42.50
185/70SR14	\$46.50
195/70SR14	\$49.00

- 2 Steel Belts
- Nylon Cord

Steel Belted Radial M&S



SIZE	COST
P155/80R13	\$38.75
P165/80R13	\$41.00
P185/75R13	\$43.00
P175/75R14	\$47.50
P195/75R14	\$48.50
P205/75R14	\$51.50
P205/75R15	\$52.00
P215/75R15	\$54.00
P225/75R15	\$58.00
P235/75R15	\$61.00

Fiberglass Belted M&S



SIZE	COST
P165/80B13	\$31.25
P185/80B13	\$32.50
P195/75B14	\$35.75
P205/75B14	\$38.00
P215/75B14	\$39.50
P215/75B15	\$40.50
P225/75B15	\$43.00
P235/75B15	\$45.75

- Polyester Cord
- 2 Fiberglass Belts
- Pinned for Studs

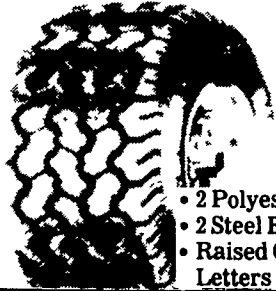
Dual Bite



SIZE	LR Ply	COST	F E T
800-16.5	D 8	\$61.00	NO TAX
875-16.5	D 8	\$69.50	.06
950-16.5	D 8	\$78.50	.84
10-16.5	D 8	\$80.00	1.01
12-16.5	D 8	\$95.00	2.83

- Nylon Cord
- Tubeless
- Ice Studs For \$10.00 Per Tire
- * FREE TUBELESS VALVES
- * FREE MOUNTING & BALANCING
- * ALIGNMENT BY APPOINTMENT ONLY

Revenger RV Radial



- 2 Polyester Cords
- 2 Steel Belts
- Raised Outline White Letters

SIZE	LR Ply	COST	F E T
HR78-15	C 6	\$ 88.00	NO TAX
LR78-15	C 6	\$ 91.00	.51
30.9.50R15	C 6	\$ 88.50	NO TAX
10R15	C 6	\$ 96.00	.57
31-10.50R16.5	D 8	\$112.00	1.77
33-12.50R15	C 6	\$116.00	2.22
33-12.50R16.5	D 8	\$130.50	4.34
31-11.50R15	C 6	\$104.00	1.40
750R16	D 8	\$ 87.00	.76
800R 16.5	D 8	\$ 84.50	NO TAX
8.75R16.5LT	D 8	\$ 87.50	.49
9.50R16.5LT	D 8	\$ 98.00	1.28

HURST TIRE SERVICE

1 Mile West of Blue Ball on Route 322

(717) 354-4931

Mon. & Fri. 7:30-9; Tues., Wed., Thurs. 7:30-5, Closed Saturdays



TREAT YOUR WATER SUPPLY AND INCREASE YOUR PROFIT



If your herd's water supply has high levels of nitrates, sulfates and/or bacteria your cows can not reach their full potential.

WE SPECIALIZE IN WATER TREATMENT ON DAIRY FARMS.

Our water conditioning methods reduce those robbing nitrates, sulfates, and bacterial to proper levels - resulting in improved herd Health - Milk Production - Butterfat.

YOU TEST THEIR FOOD— WHY NOT THEIR WATER?

Contact us for information on our proven installations, and a test of your water supply.

MARTIN WATER CONDITIONING

740 EAST LINCOLN AVE. MYERSTOWN, PA. 17067

PHONE 717-866-7555