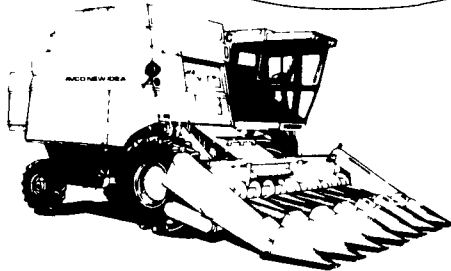


W.F. WELLIVER

JERSEYTOWN, PA 17815
717-437-2430



NEW IDEA 802 Uni Tractor with power, assist, cab, air, 175 h.p. w/818 Combine; automatic height control & 840 feed house

Full list price w/freight **\$90,106**
SAVE **\$34,106**
OUR PRICE **\$56,000**

No Trade

SPECIAL OF THE WEEK RENTAL BADGER 3350 GAL. INJECTOR TANK \$9,800

EQUIPMENT FOR SALE OR LEASE

- BADGER**
3,350 gal. liquid manure tank
1,500 gal. and 2,300 gal. vacuum tank
210 & 330 Bushel Manure Spreader
Lagoon Pump
Lagoon Super Mixer
Forage Wagons
Forage Blowers
Bedding Chopper for Mulching
Handy High Pressure Washers
Oswalt Mix Wagons
Grain Drill with band seeder
Post Hole Digger
Also: Registered Holstein Bulls



SHOW-EASE STALL CO.
573 Willow Rd. Lancaster, Pa.
Ph: 717-299-2536

Farm discontinuing grain farming offers the following equipment. All owner operated with low hours.

Extra clean shape. 1979 Gleaner combine model F, 4-30 corn head, 13' grain head, corn soybean special. Hydro traction drive monitors, hydraulic unloading auger, heat and air conditioning, radio, 13:1x26 Rice tires; 1980 AC 7045 tractor with cab, air conditioning and heat, AM-FM radio, power shift transmission, 20:8x38 tires; JD grain drill model 8300 with grass seed box, depth gauges, press wheels; AC air champ corn planter; 4/30 inch rows with all options. Has liquid fertilizer, liquid herbicide spraying and insecticide boxes

201-369-4738
or
201-369-3428

FORRESTER FARMS

1337 Lincoln Highway East
Chambersburg, PA 17201
Phone: 717-263-0705
Sales - Parts - Service

- | | |
|----------------------|------------------------------------|
| Ford 8N | Ford TW10 w/cab & air DP |
| (3) Ford 2000 | Ford TW10, 4 WD w/cab & air DP |
| New Ford 2910 | JD 1030 hi lo w/cab |
| Ford 3000 | JD 1120 1969 hi lo |
| Ford 3000 PS | New JD 1640 |
| Ford 3600 | JD 2030 |
| New Ford 3910 | JD 2120 |
| (2) Ford 4000 1972 | JD 2130 1975 w/cab |
| Ford 4000 1975 | JD 2130 1975 w/cab |
| Ford 4600 1978 | JD 2130 1975 w/cab |
| w/Cab | (2) JD 3120 1969 |
| (2) Ford 5000 | JD 3130 1976 w/cab |
| Ford 6600 dual power | JD 4230 2 WD |
| w/cab | JD 4430 w/cab & air 4WD |
| Ford 7000 | JD 4440 4 WD |
| Ford 7700 | (2) JD 4440 w/cab & air, 4WD |
| Ford 8100 1980 | IH 784 w/cab & heat |
| w/cab DP | IH 966 1974 w/cab |
| New Ford 8200, | Universal (Long 445) 4 wheel drive |
| 110 h p DP | Satoh w/blade & cultivator |
| Ford 8600 1972 | |
| w/dual power | |
| Ford 9600 DP | |
| Ford 9700 cab, DP | |

New Replacement Seats for 9N to 5000 Tractors Adjusts to Operators Weight \$120.00 Each

Full Line of Tisco and Vapormatic Parts

1/4 Mile East of Exit 6 I-81 on U.S. 30
Hours: 8:30 - 5:00 Mon. - Fri.
8:30 - 12:00 Saturdays

LOST CREEK IMPLEMENT

Oakland Mills, PA 17076
717-463-3511 463-2161



New JD 660 Spreader
300 Bushel List Price \$9,675
Sale Price \$7,000 1 only
Waiver of Interest till 5-1-85
On All New Spreaders

- JD 4400 Combine w/13' platform
750 MF w/14' platform, air cond., hydro, good \$19,500
New 6620 side hill combine
Used 443 corn head, late style
(2) Used 444 corn head, very good
Waiver on New & Used

GREEN VALUE EQUIPMENT USED TRACTORS

- JD 4020 PS, WFE
JD 440 Industrial Tractor w/loader
33 h.p. JD 1050 tractor w/roll guard & canopy, 375 hrs., like new
70 h.p. 6600 Ford w/dual outlets, 18.4x30 res weights, 1,044 hrs., dual power, like new \$12,500
9N Ford
MF 65 tractor, good, new tires, \$3,500
15 HP Satoh Beaver diesel, 4WD, \$2,900
(2) JD B tractors, nice, \$1,000 each
Farmall C w/mower, plow and front blade, sharp \$2,650
Farmall H

TILLAGE

- JD 125 3-16 mounted plow
JD 145 4-16
JD F45 3 bottom 16", excellent
JD 145 plow, 5 btm, 16"
JD 1250 4 btm, 16" integral \$1,200
Case 4 btm, 16", semi-mounted, \$950
JD 2 btm trail plow
JD 125 4-16 intd \$795
JD 2 btm mounted plow
10" Case transport disk
IH 401 harrow hyd control, very good, \$595
18" transport harrow
JD BWA disk harrow 12'

DRILLS & PLANTERS

- JD 7000 conservation corn planter, 6 row dry fert., insecticide monitor
IH 13x7 drill, good
IH 56 4 row insecticide, nice, reduced to \$1,300
JD 494A 4 row
4 Row Oliver-White 540 planter, dry insect disk

HAY, FORAGE & MISC.

- IH 55 Forage Harvester w/corn head
IH hay crimper
IH 440 baler w/thrower, \$2,650
JD 38 forage harvester w/2RC
JD 800 SP windrower, 10', good condition, \$2,750
NH #8 Forage Wagon w/8 ton running gear w/3rd beater & roof, excellent
JD 16A flail chopper, very good
Ford 3 pt hitch mower
JD 483 mower conditioner
NH 479 haybine
(1) used gravity bin w/running gear, 1 yr. old, 215 bushel
(3) used forage blowers
JD 24T baler w/ejector
IH roll bar hay rake
NI #7 1 row corn picker
(2) used buck saws

New Killbros Gravity Bins & Zimmerman Elevators

TRACTORS

- 5739 IH 1066 w/cab
- 5731 IH 656
- 2871 IH 1466 w/cab, new paint
- 1616 IH 1066 "black stripe"
- 5278 IH 826
- 5415 IH 544G
- 2845 JD 4430 w/cab, duals
- 2755 MF 1805 4WD duals
- 5170 NH 775 skid steer loader
- 5700 N.H. 778 skid steer loader

COMBINES

- 5120 JD 7720 w/4WD, chopper
- 3059 JD 7700 w/chopper
- 2622 JD 7700 w/chopper
- 3057 JD 7700 w/chopper
- 3058 JD 7700 w/chopper
- 5447 IH 1480
- 3180 IH 1460 w/cornhead, platform
- 2108 IH 1480 reconditioned
- 3094 IH 915 w/platform

GOOD SELECTION OF CORNHEADS AND PLATFORMS

MISC. EQUIPMENT

- 5487 NH 280 Baler
- 5484 IH 2001 Loader
- 5402 N.I. Rake
- 5394 Dunham Lehr 4 Row Cultivator
- 5373 Ag-Chem 500 Gal. Poly Tank
- 5751 Rhino Flex 15 mower
- 5291 Rhino 20' Flex Wing Mower
- 5577 Rhino 20' Flex Wing Mower
- 5277 IH 55 chisel plow
- 5312 IH 295 planter units
- 5313 15' solid wheel packer
- 5272 Miller 14' Offset Disk
- 5750 Case 14' Disk
- 5564 AC 2300 Disk, 14'
- 5561 J.D. 210 Disk, 13'
- 3111 Agrotec 200 gal. 30' sprayer
- 1657 Case K23 disc harrow 24'
- 5121 Dunham-Lehr 29' crowfoot packer
- 5117 Ferguson chisel plow 13 shank
- 5419 JD 22 Shank Chisel plow
- 5740 IH 560 plow, 6x16
- 395 Glencoe 14' soil saver
- 5534 Glencoe Soil finisher, 20'
- 5720 N.H. 1010 Bale wagon
- 5713 I.H. 510 Drill
- 5765 JD 246B Drill
- 5766 JD E9300 Drill Attachment
- 2763 IH 620 tandem full press drill
- 3098 IH Dual Hitch for 5100 Drill
- 5006 IH 440 baler reconditioned
- 5026 IH 1190 mower conditioner
- 5569 IH 60 Shredder
- 2872 JD 7x18 double disc drill
- 5045 Krause 2143 disc 42'
- 5457 Krause 2413 Disc 23'
- 5578 Krause 3 Bar Harrow
- 2762 MF 7x18 drill
- 5760 Wilrich 24 Ft. Field Cultivator
- 5759 MF 520 Disk 12'
- 1512 Miller 8500 offset disc 26'
- 1385 Sunflower G-3-20 offset disc
- 2375 Tebbin sub-soiler
- 5241 Wil-Rich 2400 MP Plow, 7 Bottom
- 5216 NH 479 Haybine
- 5164 NH 479 Haybine
- 5381 NH 479 Haybine
- 5615 Brillion SC-01 Field Cultivator, 20'
- 5634 Brillion Culti-mulcher 15'
- 5573 IH 475 Disc 15'
- 5702 NH 462 Disc mower



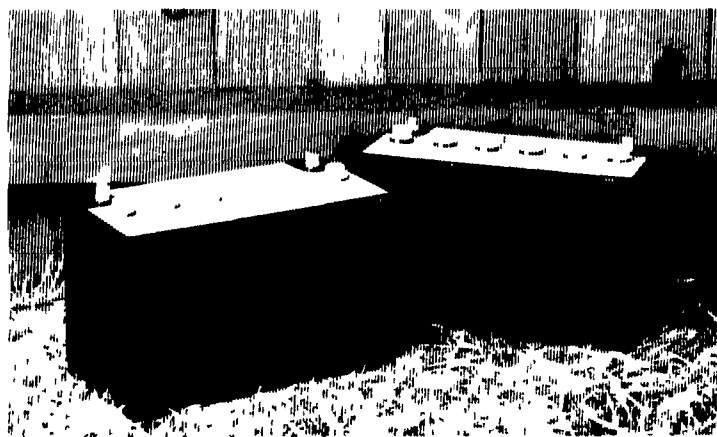
**HOOVER
EQUIPMENT, INC.**
P.O. Box 107
Middletown, DE 19709
(302) 378-9555

BEST IN THE FIELD

PARTS

R.O.U.N.D.U.P

Buy one battery at regular price



Get a second battery at 1/2 price

See us today.
Offer ends December 31.

**ZIMMERMAN'S
FARM SERVICE**

Bethel, Pa. 717-933-4114

