



Livestock market and auction news

Virginia Auction Summary

October 11-17

Report supplied by VDA

Total of Va. Weekly Feeder Cattle Auction Receipts: 10,930.

TREND: About steady.

South and Southwestern, Va.

Auction Summary

Smithfield, Southside

(Blackstone), Tri-State Narrows

Abingdon, Lynchburg, Hollins,

Withevill

October 11-17

STEERS: 300-500 lbs. Medium 1 58.50-70.00; Large 1 59.00-70.00; Small 1 52.00-64.00. 500-700 lbs. Medium 1 52.75-63.00; Large 1 54.00-64.50; Small 1 49.00-60.00. 700-1000 lbs. Medium 1 50.00-58.75; Large 1 48.50-57.00; Small 1 45.00-52.50.

HEIFERS: 300-500 lbs. Medium 1 42.00-53.50; Large 1 44.00-55.00; Small 1 38.00-48.00. 500-700 lbs. Medium 1 40.00-49.50; Large 1 43.00-52.00; Small 1 37.00-46.50. 700-900 lbs. Medium 1 42.75-49.75; Large 1 44.00-49.50.

Northern Va.

Auction Summary

October 11-17

STEERS: 300-500 lbs. Medium 1 58.00-70.75; Large 1 57.00-68.00; Small 1 50.00-63.00. 500-700 lbs. Medium 1 53.50-64.00; Large 1 55.00-63.00; Small 1 46.50-58.00. 700-1000 lbs. Medium 1 50.00-60.25; Large 1 51.50-60.00; Small 1 47.50-55.00.

HEIFERS: 300-500 lbs. Medium 1 38.00-49.00; Large 1 40.00-48.50; Small 1 35.00-45.00. 500-700 lbs. Medium 1 41.00-52.50; Large 1 43.00-52.00; Small 1 35.25-46.00. 700-900 lbs. Medium 1 41.50-48.50; Large 1 45.00-51.00; Small 1 40.75.

Shenandoah Valley Livestock

Harrisonburg, Va.

Saturday, October 13

Report supplied by auction

FEEDER CATTLE: Trend- Steers steady. Heifers 2.00 higher; Bulls steady.

STEERS: 300-500 lbs. M&L-1 60.00-68.00; 500-700 lbs. 56.00-61.00; 700-1000 lbs. 52.00-58.00; Holstein 300-1000 36.00-46.00. S-1&M&L-2 300-500 lbs. 52.00-62.00; 500-700 lbs. 46.50-58.00; 700-1000 lbs. 45.50-52.00.

FEEDER BULLS: M&L-1 300-500 lbs. 43.00-48.00; 500-700 lbs. 44.50-51.00; 700-1000 lbs. 46.00-50.50. S-1&M&L-2 300-500 lbs. 37.00-44.00; 500-700 lbs. 38.00-44.00.

HEIFERS: M&L-1 300-500 lbs. 50.00-58.50; 500-700 lbs. 45.00-55.00. S-1&M&L-2 300-500 lbs. 47.00-57.00; 500-700 lbs. 44.00-52.00.

STOCK COWS: Beef 285.00-365.00.

SLAUGHTER COWS: Trend- 2.00 lower. Utility & Commercial 2-4 32.00-38.00; Canner & Cutters 26.00-31.50.

SLAUGHTER BULLS: 1&2 40.75-46.25.

LAMBS: Trend- Steady. High Choice & Prime 60.50; Choice 57.00; Feeder Lambs Choice 60.00-60.25; Slaughter Ewes 5.50-15.75.

HOGS: US 1-3 200-240 lbs. 44.25; Sows 1-3 37.50-43.00; Boars 30.75.

VEAL: Good 50.00-60.00.

SLAUGHTER CALVES: Good & Choice 39.00-45.00.

St. Louis Cattle

Thursday, October 18, 1984

Report Supplied by USDA

Receipts This Week	3,300
Week Ago	3,300
Year Ago	4,100

Compared to last week's close, slaughter steers steady. Slaughter heifers steady to weak. Cows mostly 2.00-3.00 lower. Bulls steady. Slaughter supply mainly choice steers and heifers with several lots choice and prime 3-4 heifers, around 15% cows.

SLAUGHTER STEERS: Mixed choice and prime 2-4 1100-1350 lbs. 61.50 to mostly 62.00. Choice 2-4 1000-1325 lbs. 60.50-62.00; 900-1000 lbs. 59.00-60.50; 850-900 lbs. 58.00-

59.00. Mixed good and choice 2-3 900-1200 lbs. 59.00-61.00. Good 2-3 900-1175 lbs. 57.00-59.00. Mostly good 2-3 1050-1300 lb. holsteins 51.00-56.50, package 57.00.

SLAUGHTER HEIFERS: Mixed choice and prime 2-4 900-1100 lbs. 60.00, package 60.50; 3-4 950-1150 lbs. 58.00-59.00. Choice 2-4 900-1100 lbs. 58.50-60.00; 800-900 lbs. 56.00-58.50. Mixed good and choice 2-3 800-1000 lbs. 56.00-58.50. Good 2-3 750-975 lbs. 53.00-56.00.

COWS (Closing Week Sales) Breaking utility and commercial 2-4 35.00-37.00. Cutter and boning utility 1-2 34.00-37.00. High yielding boning utility 1-2 37.00, few up to 38.00. Canner and low cutter 1-2 30.00-34.00. Shelly canner 1-2 26.00-30.00.

BULLS: Yield grade 1-2 1100-2275 lbs. 43.00-47.00.

Wednesday's Weekly Sheep Auction. Receipts around 325 head. Compared to last week, wooled slaughter lambs 2.00 lower. Shorn slaughter lambs steady. Feeder lambs 3.00 lower. Supply light, demand very light.

SLAUGHTER LAMBS: Mostly choice, few prime wooled 85-100 lbs. 50.00-85.00; 100-130 lbs. 55.00-60.50. Same grades shorn with no. 1-2 pelts 100-120 lbs. 60.00-64.00.

SLAUGHTER EWES: Few utility 8.00.

FEEDER LAMBS: Couple lots mostly choice 50-90 lbs. 46.00-52.50.

GOATS: Few 9.00-10.00 per head.

FEEDERS: (Including around 1,200 at the regular Thursday auction.)

Feeder steers under 700 lbs. 2.00-3.00 lower, over 700 lbs. steady. Feeder heifers 300-500 lbs. weak, over 500 lbs. steady in light test. Trading moderate, best demand for cattle over 700 lbs. overall supply mostly steers, and 300-500 lb. heifers.

FEEDER STEERS: Medium and large frame 1: 300-500 lbs. 61.50-65.00, two lots 425-450 lbs. 66.50 and 67.75; 500-700 lbs. 60.00-64.00; 700-800 lbs. 59.00-63.00.

Medium and large frame 1-2: Few 450-600 lbs. 60.50-62.00.

Large Frame No. 2 Holsteins: 450-950 lbs. 39.00-43.00.

FEEDER BULLS: Medium and large frame 1-2: Few 400-525 lbs. 56.50-57.50.

FEEDER HEIFERS: Medium and large frame 1: 300-400 lbs. 48.00-53.00, one lot 55.00; 400-500 lbs. 51.00-55.00; 500-700 lbs. 53.00-55.00.

Small to medium frame 1-2: Few 300-400 lbs. 46.50-48.00.

Dewart Livestock

Dewart, Pa.

Monday, October 15, 1984

Report Supplied by PDA

CATTLE 270. Choice 2-4 slaughter steers 1000-1200 lbs. 61.00-65.00, Good 56.00-60.50, Few Good & Choice holsteins 50.00-54.00, Standard 44.00-48.00. Few Choice slaughter heifers 56.75-59.00, Few Good 51.00-55.00. Breaking Utility & Commercial slaughter cows 37.50-41.25, Couple to 43.50, Cutter & Boning Utility 34.50-39.00, Canner & Low Cutter 30.50-34.75, Shells down to 20.00. Couple Good slaughter bullocks 55.00 & 56.75. Few Yield Grade No. 1 920-1740 lbs. slaughter bulls, 39.00-50.00.

FEEDER CATTLE: Steers One Lot Medium Frame #1 350 lbs. at 53.50.

CALVES 187. Few Choice Vealers 80-98.00, Few Good 65.00-75.00, Few Standard & Good 110-120 lbs. 64.00-67.00, 70-105 lbs. 53.00-63.00, Utility 60-85 lbs. 40.00-50.00.

FARM CALVES. Holstein bulls 90-125 lbs. 70.00-90.00.

HOGS 190. US No. 1-3 215-270 lbs. Barrows & gilts 43.10-46.50, One Lot No. 2-3 254 lbs. at 43.10, No. 1-3 155-185 lbs. 35.00-39.10. Sows. US No. 1-3 300-650 lbs. sows 40.00-45.50, Few Medium 250-400 lbs. 35.00-40.00. Boars 28.50-32.25.

FEEDER PIGS 254. US No. 1-3 20-35 lbs. feeder pigs 17.00-25.00 per head, No. 1-3 40-60 lbs. 26.00-32.50.

SHEEP 10. Few Good 60-90 lbs. wool slaughter lambs 46.00-51.00. GOATS 17: Large 15.00-21.00 per head, Kids 10.00-14.00 per head.

New Holland Horse

New Holland Sales Stables

Monday, October 15

Report supplied by auction

Reported receipts of 275 head of horses, mules and ponies. Market: steady.

LOCAL

Better horses 350.00-598.00. Driving horses 250.00-1000.00. Riding horses 250.00-300.00. Lightweight Killers 150.00-225.00. Heavyweight Killers 250.00-345.00. Mare ponies 30.00-70.00; Colts 10.00-20.00; Gelding ponies 30.00-70.00; Large ponies 100.00-150.00. Registered 650.00-1325.00.

State Graded Feeder Sale Keisters Auction

Middleburg, Pa.

Friday, October 12, 1984

329 head. Steers - Choice (350-575 lbs.) 64.00-71.50; Choice (575-850 lbs.) 57.00-64.00; Medium (350-550 lbs.) 57.00-62.00; Medium (550-850 lbs.) 54.00; Heifers - Choice (350-550 lbs.) 53.00-57.50; Choice (550-750 lbs.) 50.00-53.00; Medium (350-550 lbs.) 48.00-53.00; Medium (550-750 lbs.) 45.00-48.00.

LOUIS LYONS & SON

Consign your cattle and hogs, feeder pigs & calves to Louis Lyons & Son. They offer choice service, excellent sorting & marketing of your livestock.

Charles Diller, Manager

Phone 394-7915

Burnell Siegrist - Buyer & Seller

Phone 626-8653

Experienced Personnel

Immediate Weighing

PEANUT HULLS

Bulk or Bagged

Prompt and

Courteous Service

NAAMAN EBERLY

Lancaster, PA

717-299-3001



GWALTNEY of SMITHFIELD, LTD.

We will receive your market hogs

Mondays, Wednesdays, Thursdays & Fridays

NOTE OUR WINTER HOURS 7 A.M. to 1 P.M.

Located at the Vintage Sales Stables, Paradise, PA

You will be paid immediately.

No commission or yard fees deducted.

Reduced waiting time.

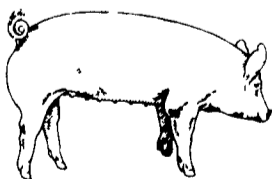
Premium prices are paid for extra fancy hogs.

For Information Call

Ed Herrmann or

Charlie Kauffman

717-442-4742



EMERY'S BUYING STATION

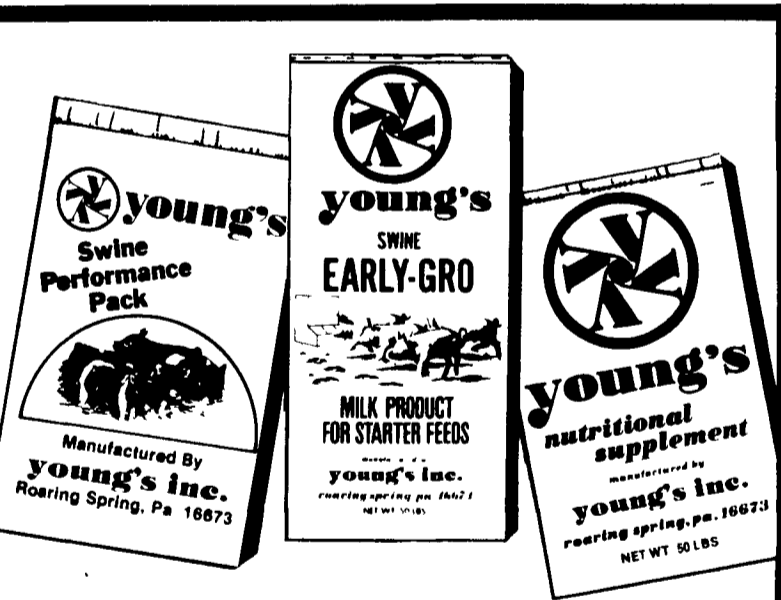
OPEN TO RECEIVE YOUR MARKET HOGS

AT THE GREEN DRAGON MARKET RD 4, EPHRATA, PA 17522 1 MILE NORTH OF EPHRATA ON NORTH STATE STREET.

HOURS: MONDAY, TUESDAY, and WEDNESDAY 6:00 A.M. to 11:30 A.M. 215-458-5677 Residence 717-733-9648 Office

YOU ARE PAID FOR YOUR HOGS IMMEDIATELY

Ken & Lois Emery, Proprietors



How Can Today's Pork Producer Afford The Best Swine Feed Supplements?

With feed costs running about 65% of the total production costs of swine, you can no longer afford to buy just any supplements. You need a well thought out feeding program, supported by high quality, economical products.

Young's swine feeding program uses time-tested products with proven results.

To be profitable, any pork producer needs the best in swine feed supplements - so call your Young's representative today.



young's

Roaring Spring, Pa. 16673

Livestock Nutritional Services