

## NY Beef Cattlemen hold fall Meeting

SYRACUSE — The New York Beef Cattlemen's Association's executive council at its fall meeting called for development of a second three-year plan for the state-wide organization.

The advisory committee, headed by Steve Gotovich of Stanfordville, was directed to work on this plan which will consider marketing, producer services, promotion, research, membership, fund raising, setting goals and priorities for each year. The first three year plan for the Association was developed and implemented in 1981 and the goals were met.

The producer services and marketing committees were directed to consider development of a feeder calf direct marketing program and a brood cow sale as marketing alternatives and to report at the annual meeting. Such programs would be in addition to the New York Beef Cattlemen's Association Feeder Calf Sales and the Spring Sale of breeding cattle sponsored by the Southwestern Division through their Angelica Feeder Sales Inc.

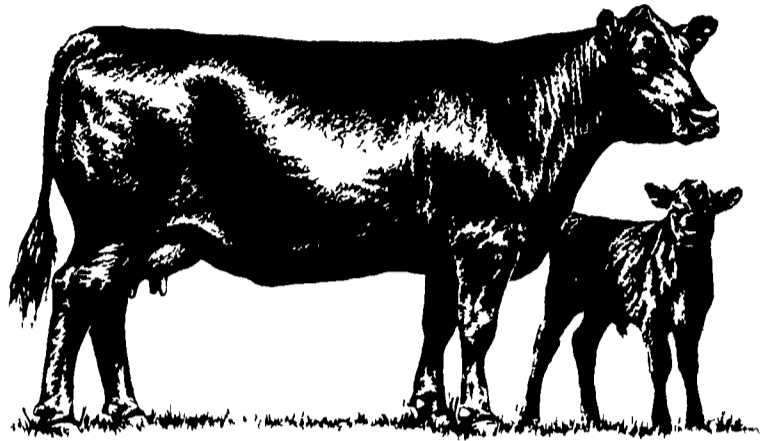
Executive secretary Lee Kraszewski of Corning reported more than 130 new members have been enrolled to date. The Eastern Division and the Southwestern Division are currently in close competition for first place in the membership contest.

Jean Frost of Holcomb and Helen Patton of Bainbridge presented the final report of the 1984 Empire Farm Days Beef Barbecue. This fund-raising

project is co-sponsored annually by the Cattlemen's Association and the New York CowBelles. Five thousand pounds of beef were sold during the three day agricultural trade show with more than 3,600 dinners and 1,000 barbecue sandwiches were sold.

Jean Shwartz of Earlville reported on the proposed New York Beef Check-Off. She said a final draft of the marketing order proposal is expected to be presented to the New York Farm Bureau and the New York Beef Cattlemen's Association at their annual meetings for approval as

the first step in implementing the Check-Off. The proposed order will call for a mandatory assessment of \$1 for every bovine animal over six months of age at the time of slaughter. The order will also call for a nine member advisory board to recommend how Check-Off Funds are to be used. The Beef Council of the New York Beef Cattlemen's Association is recommending that 60 per cent of the Check-Off funds collected remain in the state and 40 per cent be given to the National Livestock and Meat Board programs.



## '84 a record year for Angus breeders

ST. JOSEPH, Mo. — Angus breeders set new records in 1984 by recording 231,574 birth, weaning and yearling weight records in the American Angus Association's performance records program, an increase of 10% over the fiscal 1983 year. New production records were also set in the Certified Angus Beef program.

During the 1983 fiscal year, Association members reported 78,808 birth, 106,380 weaning and 46,531 yearling weights in the Angus Herd Improvement Records (AHIR) program, according to Richard Spader, executive vice president of the American Angus Association, headquartered in St. Joseph, Missouri.

The leading state in the use of performance records for the year was Montana. The 154 Angus Association members participating in the AHIR program reported 10,616 birth, 13,940 weaning and 9,195 yearling weights, all increases over the previous year. South Dakota was second with 90 participating breeders who recorded 5,840 birth, 7,813 weaning and 3,660 yearling weights.

Registrations of purebred Angus during the fiscal year ended September 30 were 174,539 head. Transfers totaled 106,790 head. The number of new Angus herds started last year as reflected in new memberships issued totaled

2,081. In addition 1,079 junior memberships were issued. These figures helped the American Angus Association retain its position as the largest beef breed registry association in the world in terms of active membership and annual registrations and transfers.

Some of the most promising figures to come out of the 1984 fiscal year was the growth in the American Angus Association's Certified Angus Beef program, according to Spader. During March of the 1984 fiscal year, one million pounds of Certified Angus Beef were sold, the first time ever that one month's production had hit this figure. For the year, some 8.2 million of certified Angus Beef were sold by participating packers. This compares with 1.6 million pounds in the 1983 fiscal year.



### HOT MELT GLUE

DIRECT FROM MANUFACTURER

**\$1.10** Per Pound

In Shipments Of 1000 Pounds-F.O.B. Our Factory

QUANTITY PRICING AVAILABLE

CONTACT

### SWK ENTERPRISES

P.O. Box 377  
Bridgeton, N.J. 08302  
(609) 451-0400

## OCTOBER WOODWORKING SPECIALS

### MAKITA

#### Model 4301BV Super Duty Orbital Variable-Speed Jig Saw

- powerful 3.5 AMP hi-tech motor for superior performance
- full 1-stroke and orbital blade action for fast cutting and long blade life
- variable speed (0-1100 SPM) plus 4 orbit selection for cutting in steel, wood, plastic and nonferrous metals
- maximum cutting capacity of 2" at 90° 1 1/4" at 45° in wood 1/4" in steel at 90°
- roller guide directs blade for improved support and more aggressive cutting
- compact and well balanced for easy handling and better control

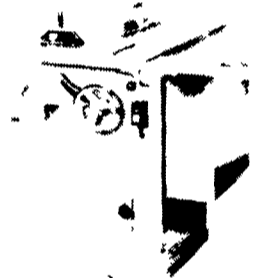


4301BV

**\$130<sup>00</sup>**

### JET

#### Jet Tilting Arbor Table Saws



Specifications	CTAS-10-1	CTAS-10-3
• Saw Diameter	10"	10"
• Motor w/Magnetic Control Switch	3 HP, Sgl. Ph.	3 HP, 3-Ph.
• PRICE	<b>\$1204.45</b>	<b>\$1262.25</b>

#### Jet JWP-20H Wood Planer

##### Specifications:

- Table Area: 28"x21 1/4"
- Max Planing Width 20"
- Max. Planing Thickness, 7"
- Min. Planing Thickness: 1/8"
- Max. Cutting Depth 1/4"
- Min Planing Length 8"
- Motor: 5 HP, 3 Phase



**\$2,209.15**

#### Jet JWS-18 Woodworking Shaper

- Precision Ground Table
- Fully Adjustable Fence

##### Specifications:

- Capacity Spindle: 1/2" (Under Nut): 2 3/8" Spindle Travel: 7/8"
- Speed with 3450 Motor 9,000 RPM
- Motor: 1 HP single phase



**\$356.15**

#### Model 3608 3/4 HP Router

- compact and light weight 1 1/2 lbs. toolless, sliding on 1/2" stainless steel plate
- high power 3/4 HP motor 3,000 RPM
- all cast aluminum construction for rigidity and strength
- 3/8" collet and 1/2" collet
- large calibrated depth controlling feed 1/32" rate depth adjustment



**\$77<sup>00</sup>**

#### Model 2040 15 5/8" Planer

- powerful 1.8 AMP motor 12,000 RPM
- 1 1/2" depth of cut
- 1 1/2" max. planing width
- 1 1/2" max. planing thickness
- 1 1/2" max. cutting depth
- 1 1/2" max. planing length
- 1 1/2" max. planing width
- 1 1/2" max. planing thickness
- 1 1/2" max. cutting depth
- 1 1/2" max. planing length



**\$1165<sup>00</sup>**

#### Model B04510 Heavy Duty Finishing Sander

- powerful 1.8 AMP motor 12,000 RPM
- 1 1/2" depth of cut
- 1 1/2" max. planing width
- 1 1/2" max. planing thickness
- 1 1/2" max. cutting depth
- 1 1/2" max. planing length
- 1 1/2" max. planing width
- 1 1/2" max. planing thickness
- 1 1/2" max. cutting depth
- 1 1/2" max. planing length



**\$49.90**

## SAVE COWS, TIME & BEDDING

### COW MATS

Use our unique method of installing a one piece mat under a row of cows. Prevents movement of mat and bedding from creeping underneath.

All "row" and single mats are cut from heavy one inch rubber belting.

**SAVE 40%**

on

**New Replacement Belts For Farm Machines**

• Bale Thrower Belts **\$52.00**

• Grove-Gehl-Int.-S.U. Wagon Box Belts **'98 to '120**

Also Available: Bean Picker Belts & Big Round Baler Belts

Any flat belt can be custom made for your farm machinery (cleats installed). Belts shipped same day by UPS.

For more information, write:

# Bob Gabel

Rt. 16, Chaffee, New York 14030

Phone Collect: 716-496-6025



## BLUE BALL MACHINE WORKS

Rt. 322 East

Blue Ball, PA

(717) 354-4478

Mon.-Fri. 7:30-5; Sat. 7:30-11:30; Thurs. Evening til 9

