

# Livestock market and auction news

## Omaha Weekly

Omaha

Thursday, October 18

Report Supplied by USDA

Slaughter steer and heifer prices 50C to mostly 1.00 higher, instances 1.50 higher than last week. Good demand from buyers noted Monday when advances were noted on live cattle. This demand continued through midweek. Federally inspected slaughter somewhat reduced from last week. Wholesale beef traded slow and

prices held generally steady with last week. Slaughter cows 1.00-2.00 higher, most advance coming in forced trading on Thursday. Slaughter bulls firm to 1.00 higher.

Estimated 5 day receipts this week 9300; actuals last week 9441 and 12054 last year. Steers comprised 31 PCT of the week's receipts. Heifers 33 PCT., Cows 8 PCT and Feeders 36 PCT.

SLAUGHTER STEERS: Closing sales, few loads and packages choice 2-4 1050-1300 lbs. 61.50-63.00.

Mixed good and choice 2-3 1050-1150 lbs. 60.00-61.50.

SLAUGHTER HEIFERS: Few loads and packages choice 2-4 950-1075 lbs. 60.50-61.50. Few mixed good and choice 2-3 900-1025 lbs. 58.50-60.00.

Average of LS 214 quotations for choice 900-1100 lb. steers 61.00, 1100-1300 lbs. 62.00. Average cost steers this week 61.27, average weight 1150 lbs. as compared to 61.14 and 1155 lbs. last week. Average cost heifers this week

60.30, average weight 1037 lbs. as compared to 60.15 and 1006 lbs. last week.

SLAUGHTER COWS: Breaking utility 2-3 40.75-43.00. Cutter and Boning Utility 1-2 37.25-42.25. Canner and Low Cutter 34.00-37.00, few 'Shells' 29.00-31.00.

SLAUGHTER BULLS: 1-2 1050-1500 lbs. 45.50-49.00, high dressing individual 50.25, few low dressing to 42.50.

FEEDER CATTLE: Steers-Choice 300-600 lbs. 50.00-60.00. Heifers- Choice 300-600 lbs. 46.00-56.00.

CALVES: Vealers Prime and High Choice 68.00-78.00; Good and Choice 50.00-67.00; Standard 40.00-50.00; Utility down to 35.00; farm calves, Holstein bulls 90-120 lbs. 70.00-89.00; Heifers 90-120 lbs. 55.00-68.00.

HOGS: Barrows and Gilts 200-250 lbs. 43.00-46.10; 170-300 lbs. 41.00-44.00; Sows 300-650 lbs. 42.00-47.50; Boars 29.00-33.00.

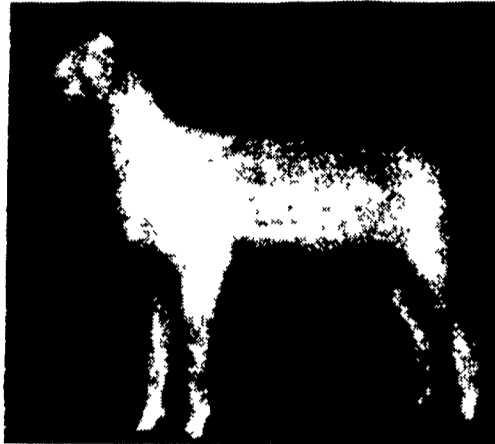
FEEDER PIGS: 25-35 lbs. 15.00-28.00 per head; 35-50 lbs. 28.00-34.50.

SHEEP: Slaughter lambs 80-115 lbs. 53.00-62.00; Ewes 12.00-20.00.

GOATS 2 15.00; 2-3 5.00.

## SWECKER POLLED DORSET DISPERSAL SALE

SATURDAY  
OCTOBER 27, 1984



(IMMEDIATELY FOLLOWING VIRGINIA BRED EWE SALE)

**AUGUSTA EXPOLAND  
STAUNTON, VIRGINIA**

(Exit 16, OFF INTERSTATE 64)

"A UNIQUE OFFERING OF SOUND, PRODUCTIVE, EWES"  
★ ALL BREEDING EWES & YEARLING GUARANTEED BRED ★

**51  
LOTS  
SELL**

- 19 YEARLING EWES
- 16 BREEDING EWES
- 15 EWE LAMBS
- 1 STUD RAM

OVER 35 YEARS BREEDING DORSETS WITH THESE BLOODLINES OGAN, BIRCHWOOD, RATCLIFF, MAST, SQUIRES, PENN STATE, BAXTER.

CONTACT US  
FOR CATALOG

**SWECKER DORSETS**

Star Rt. C. Box 5  
Monterey, VA 24465  
703/468-2308

Sale Managed by



KEN BRUBAKER  
P.O. Box 149  
Westtown, PA 19395  
215/696-5483

## G&M Livestock

Monday, Oct. 15

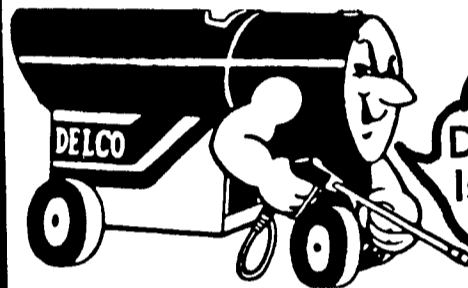
Duncansville, Pa.

Report supplied by auction

SLAUGHTER CATTLE: Steers-Choice None; Good 54.00-62.00; Standard 48.00-54.00; Utility 42.00-48.00. Heifers- Choice 58.00-63.00; Good 52.00-58.00; Standard 46.00-52.00; Utility 40.00-46.00. Cows-Choice 38.00-40.00; Good 36.00-38.00; Standard 34.00-36.00, couple to 42.50; Utility 32.00-34.00; Cutters 30.00-32.00; Cannors down to 26.00. Bulls 1200-1900 lbs. 42.00-51.00; 900-1200 lbs. 40.00-50.00.



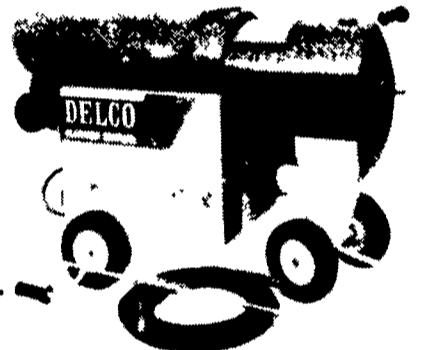
READ  
LANCASTER  
FARMING  
FOR COMPLETE  
AND  
UP-TO-DATE  
MARKET  
REPORTS



Watch Out,  
Dirt—The  
DELCO WASHER  
Is Cleaning Up!

DELCO  
HIGH PRESSURE  
WASHERS

Hot and Cold  
From 600 To 2,000 P.S.I.



Available At

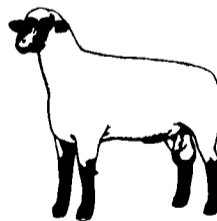
**GRUMELLI FARM SERVICE**  
Quarryville, PA (717) 786-7318

## VIRGINIA BRED EWE & EWE LAMB SALE

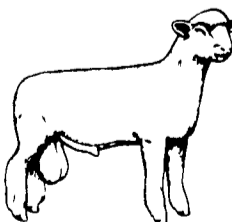
SATURDAY, OCTOBER 27, 1984

AUGUSTA EXPOLAND  
STAUNTON, VIRGINIA  
(Exit 16 Off Interstate 64)

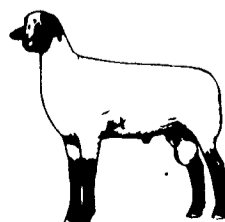
- Leading Consignment From Breeders In Virginia, West Virginia, New Jersey and Pennsylvania
- Ewes Will be Pregnancy Tested And Guaranteed Bred
- Yearling Ewes — Fall Ewe Lambs — Spring Ewe Lambs
- Health Papers And Trucking Available To Out-Of-State Buyers
- Mail Or Phone Orders Accepted By Qualified Buyers
- An Excellant Opportunity To Incorporate New Bloodlines In Your Flock



HAMPSHIRE



DORSET



SUFFOLK

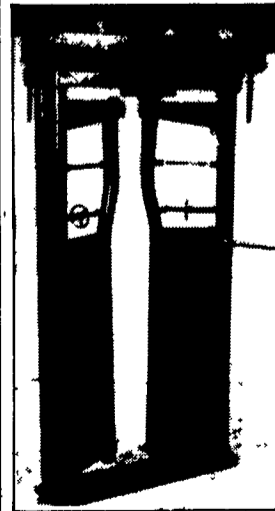


Sale Managed by:  
KEN BRUBAKER  
P.O. Box 149  
Westtown, PA 19395  
215/696-5483

Write or Call  
For  
Catalogs

PAUL B. ZIMMERMAN  
INC.

## AUTOMATIC CATCH GATE



### FEATURES

- Easily Operated By One Person
- Easily Adjustable For All Sizes of Cattle
- Operates Left or Right
- Double Link on Doors For Extra Strength
- One Side Spring Loaded For Extra Safety



CATCH PEN  
AVAILABLE WITH  
3 POINT LIFT

**PAUL B. ZIMMERMAN, INC.**

Hardware • Farm Supplies  
Custom Manufacturing • Crane Service  
Box 128 R.D. #4, Lititz, PA 17543  
Wood Corner Rd.  
1 Mile West of Ephrata  
Phone: 717-738-1121