

# Chester Co. DHIA

(Continued from Page D15)

F Miller&Sons	B3	69 3	86 8	18 216	689	580
Arthur D Hershey	3	50 2	86 8	17,658	686	587
Calvin R Blank	B3	55 4	91 6	18,739	685	599
Rich Proud&Son	B3	64 7	89 8	18,106	682	590
James V Yale	B3	66 1	90 1	16,455	680	550
Swan View	3	59 4	87 1	18,573	679	600
Dave&Dawn Windle	3	48 4	87 0	18,344	679	584
Glen H Freese	3	70 9	85 5	18,338	679	584
Elmer A Mast	B3	82 7	85 4	17,173	673	568
Harold R Kulp	B3	79 4	88 1	17,569	673	565
Round Top Farm	B3	82 6	83 8	18,972	*671	613
Rich Hostetter	B3	68 6	85 4	17,582	663	573
Louis C Neyman	G3	32 2	91 4	16,769	658	571
Leon D Kurtz	3	43 5	83 1	18,253	658	577
Dale Hostetter	3	48 3	85 2	18,117	*656	558
Daniel Stoltzfus	B3	37 8	86 5	18,079	656	589
Merle J King	B3	82 2	88 0	17,403	653	544
Spring Aqua Farm	3	81 2	90 0	18,274	653	598
Ridglea Farm	3	91 8	84 3	16,816	651	549
Ronald F Elliott	B3	57 3	88 1	16,379	651	532

\* Indicates 3 Times A Day Milking

The cow with high milk was owned by Merle J. King.  
The cow with high fat was owned by David E. Weaver.

OWNER NAME OR NO	BRD	AGE	LBS. MILK	% FAT	LBS. FAT
David E Weaver					
Cinamon	9	2-8	305	19,587	5 2 1018
Ardrossan Farms					
Hsnodwn	1	5-9	305	19,840	5 1 1008
Jnotory	1	4-0	305	20,530	4 6 947
SS Rose	1	9-1	305	22,050	4 2 937
Ltrose	1	4-3	305	17,483	5 0 866
H-K-Hop	1	4 10	305	19,937	4 1 820
Ben Beiler & T Barlow					
Beux 19	3	5-2	305	24,114	4 1 985
Bell 81	3	3 11	305	22,499	3 8 861
Mast Stoltzfus					
Dolly	3	7-8	305	20,225	4 8 966
Posey	3	4-0	305	21,994	4 1 898
Bright Meadows					
78	3	5-11	305	23,678	4 0 947

Minno 41	3	4 11	305	23 180	3 7	848
Glenville Farms						
406	3	5 3	305	24 184	3 9	943
Herman Stoltzfus						
Rosie 20	3	6 10	305	22,426	4 2	941
Fanny 38	3	5 6	305	22,504	3 6	815
Gottlieb Strohmaier						
142	3	3 5	305	21,457	4 3	932
Verna 10	3	4 11	305	21,559	3 7	805
William Fell						
76	3	6-2	305	19,686	4 7	920
Maplesway Farm						
Beth	3	4 11	305	26,551	3 4	916
Wonder	3	7 5	305	21,983	3 9	858
Janet	3	3 9	305	24,368	3 5	849
Ridglea Farm						
74	3	5-4	305	18,170	5 0	911
J Harold Bare						
3	3	8-2	305	24,116	3 8	908
51	3	6-3	297	21,974	3 9	857
54	3	4 0	305	20,526	3 9	808
Brycoed Farms Inc						
R249	3	6-2	305	22,061	4 1	907
Per-Valley Farm						
19	3	6 0	305	20,388	4 4	906
Wilmer L Hostetter						
Mary 43	3	5 2	305	23,472	3 8	900
David K Stoltzfus						
70	3	8-7	305	21,886	4 1	899
Lester Eby						
Bonnie	3	10-0	305	22,597	3 9	892
Blossom	3	3-6	305	19,093	4 3	823
Sis	3	4-10	305	21,125	3 8	800
Arthur D Hershey						
Angel 26	3	4-2	305	20,163	4 4	890
Robert E Pepple						
60	3	2-8	305	19,384	4 6	887
J Raymond Harnish						
Sheil 27	3	8-4	305	21,182	4 2	883
Hargret Dairy Inc						
61	3	5-5	305	22,341	3 9	878
Paul Smoker						
65	3	4 10	305	18,525	4 7	878
Harold R Kulp						
Arc	3	5-8	305	21,886	4 0	873
Charles H Gable						
251	1	9-5	305	18,818	4 6	870

Donald M Horning						
61	3	7 8	305	23,830	3 6	866
George Strutynski						
59	3	5-10	305	20,565	4 2	865
Calvln S Kurtz						
51	3		305	20,375	4 2	863
Kulp Bros						
209	3	6-6	304	22,491	3 8	862
Dunwood Farm						
May	3	6 8	305	20,197	4 3	860
John S Stoltzfus						
Valente	3	10 10	305	23,105	3 7	854
Laura	3	7 4	305	21,986	3 8	826
Merle J King						
Lil	3	5-2	305	26 713	3 2	853
Paul King						
Bankr 22	3	6-5	305	24,102	3 5	851
Condu 42	3	4-1	305	21,929	3 8	824
Babe 24						
4-6	305			20,069	4 1	818
Abner R King						
Ding 329	3	3 2	305	19,894	4 3	851
Donald L Kauffman						
150	3	4 8	305	24,677	3 4	848
Samuel B Acker						
625	3	5-1	285	15,592	5 4	845
H & R Mason						
25H	3	5-11	294	20,312	4 2	844
72F	3	5-5	298	21,981	3 7	810
SR & MJ Matthews						
52	3	6-10	305	18,604	4 5	829
Floyd Miller & Sons						
32	3	9-5	305	19,035	4 3	828
17	3	6-8	271	20,108	4 0	812
Joseph Lusby						
Ester	3	4-7	305	18,341	4 5	825
Joel C Brown						
1023	3	3-1	305	22,630	3 6	821
Richard Proud & Son						
B73	3	3-0	305	19,935	4 1	820
J Kenneth Landis						
Babette	3	5-5	305	19,041	4 3	819
David & Dawn Windle						
Nicklo	3	3 11	305	21,041	3 9	817
Mark & Melody Stoltzfus						
Lesprng	3	4-1	297	20,401	4 0	816
Vernon Guest & Son						
Bristol	3	2-10	305	21,229	3 8	810
Rothenberger Bros						
26	3	4-3	305	18,477	4 4	810
Wilkinson Farm #2						
1508	3	3 4	305	23,690	3 4	808
George P Lamborn						
Astrid	3	6 9	305	19,989	4 0	804
Harry L Griest						
53	3	11 0	305	21 025	3 8	803

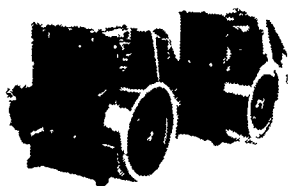
## SMUCKER'S SALES & SERVICE, INC.

RD #2, BOX 21  
NEW HOLLAND, PA 17557



12-36 bhp

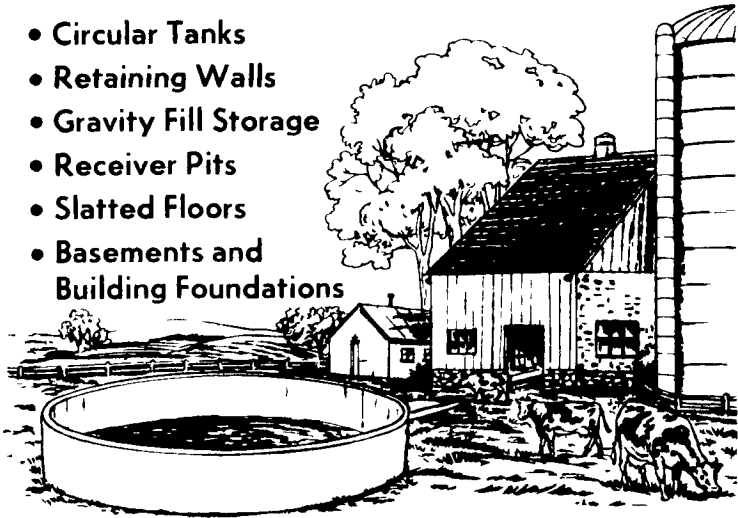
**TS2/TS3  
AIR  
COOLED  
DIESELS**



**FOR PROMPT SERVICE CALL  
717-354-4158 OR IF NO ANSWER  
CALL 717-354-4374**

## POURED REINFORCED CONCRETE CONSTRUCTION

- Circular Tanks
- Retaining Walls
- Gravity Fill Storage
- Receiver Pits
- Slatted Floors
- Basements and Building Foundations



### SIZES & LAYOUTS TO YOUR SPECIFICATIONS

We are qualified to handle any poured concrete job you may need. We use a practical aluminum forming system to create concrete structures of maximum strength and durability. For a highly satisfactory job at an affordable price, get in touch with us.

### POURED FOR DURABILITY

# Groffdale

concrete walls, inc.

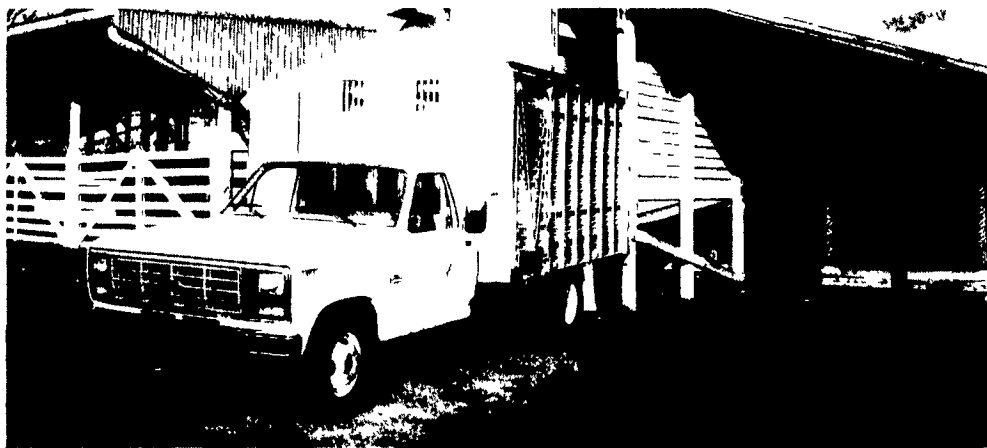
BRICK CHURCH RD. LEOLA, PA. 17540

FOR SALES & LAYOUT CONTACT  
GROFFDALE POURED WALLS (717) 656-2016  
JAKE KING (717) 656-7566



## MANUFACTURERS OF ALUMINUM

- Cattle Bodies
- Gooseneck Trailers
- Possum Belly Trailers
- Bulk Feed Bodies



12' ALUMINUM LIVESTOCK BODY

### ATTENTION FARMERS & LIVESTOCK HAULERS:

#### ALUMINUM STRAIGHT LIVESTOCK BODIES

LENGTHS AVAILABLE: 8' to 32'  
WIDTHS: 96" standard to 102" optional  
HEIGHT: 6'6" standard to 8' optional

Eby all-aluminum livestock bodies are built to offer you an alternative to heavy wood and steel bodies. In addition, rugged "Eby" construction and aluminum combine to offer years of maintenance-free service.

#### CONSIDER THE FEATURES OF AN EBY ALL-ALUMINUM BODY

Eby livestock bodies are 35% to 40% lighter than other wood and steel bodies. Eby's all-aluminum construction is maintenance free. Periodic pressure washing is all that's required to maintain that new look.

Eby's bodies are built tough and are backed by a written factory warranty. For more information on the economical choice in livestock bodies, contact:

## MH EBY, INC.

P O Box 127 Blue Ball, PA 17506

717/354-4971

