

Keister's Livestock
Middleburg, Pa.

Tuesday, October 9, 1984
Report Supplied by PDA

CATTLE 331. Compared with last Tuesday's market, slaughter steers steady to \$1 higher. Slaughter cows strong to \$2 higher. Few High Choice & Prime

slaughter steers 65.00-67.00, Choice 2-4 1080-1340 lbs. 63.00-65, couple 65.50, Good 56.50-62, few Good and Choice holsteins 54.00-57.35, Standard 45.00-52.25. Few Choice slaughter heifers 57.75-60, few Good 50.10-54. Breaking Utility and Commercial slaughter cows 38-42.50, couple to 43.85, Cutter & Boning Utility 35.50-39.25, Canner

& Low Cutter 32.00-36, few Shells down to 22.00. Few Choice slaughter bullocks 58.50-63.00. Yield Grade No. 1 815-1560 lbs. slaughter bulls 42.85-49.85. FEEDER CATTLE: Medium Frame #1 400-900 lbs. steers and bulls 45.00-55.00. CALVES 167. Few Choice vealers 75.00-80, Good 58.00-70.

Standard 70-105 lbs. 48.00-60, Utility 60-85 lbs. 40.00-46.00.

FARM CALVES: Holstein Bulls 90-125 lbs. 60.00-84.00.

HOGS 477. Barrows and gilts steady to \$1 higher. US No. 1-2 210-235 lbs. barrows and gilts 46.75-48, few to 49.25, No. 1-3 190-250 lbs. 46.00-46.75, No. 2-3 2-270 lbs. 45.00-46.00. US No. 1-3 3-700 lbs. sows 43.00-46.00, No. 2-3 3-500 lbs. 37.00-43.00. BOARS 31.50-33.50.

FEEDER PIGS 159. US No. 1-3 25-45 lbs. feeder pigs 19.00-26.50 per head, lot 60 lbs. at 33.00 per head.

SHEEP 12. Few Utility and Good 50-100 lbs. wooled slaughter lambs 38.00-46. Few slaughter ewes 10.00-17.50. GOATS 22: Small and Medium Kids 10.00-21 per head, Large 19.00-48.00 per head.

825-875# 57.50-59.50. Medium and large frame 2 550-675# 57.00-60.70, lot 670# with humps 52.60; 700-830# 53.20-56.80. Large frame 2 holsteins: 265 lb. 44.70; 500-825 lb. 42.00-46.00, one lot 520 lb. 48.70; small lot 1050 lb. 39.00.

FEEDER HEIFERS: Medium and large frame 1 300-500# 50.00-55.60, very fleshy 49.00-51.30, package replacement quality 305# 57.50 and lot 485# 56.90; 500-600# 52.50-58.40 most 52.50-56.00; 600-700# 55.50-58.00; lot 735# fleshy 55.10. Medium and large frame mixed 1-2 300-400# 48.00-52.00; 400-500# 49.00-54.00; 500-650# 51.50-55.50; part-load 740# 55.90. Medium and large frame 2 350-500# 43.25-47.75; 500-725# 45.00-50.50.

For The Week: Feeder steers steady to 1.00 lower. Feeder heifers weak to 2.00 lower. Slaughter cows and bulls through Wed. averaging steady.

Oklahoma Cattle

Wednesday, Oct. 10, 1984
Report Supplied by USDA

Estimated Receipts: 9,000
Same Day Last Week: 3,956

Compared to Tuesday's report feeder steers and heifers steady to 2.00 lower. Trade turned slow and lower late Tuesday afternoon and continued through today with a lackluster demand. Bulk supply medium frame 1 and mixed 1-2 350-750# feeder steers and 300-650# heifers.

FEEDER STEERS: Medium and large frame 1 300-500# 63.00-69.00; 500-600# 60.25-67.00; 600-700# 61.70-64.90, lot 615# gaunt 65.40; 700-800# 60.90-64.30, lot 702# 65.10; few lots 825-905# 58.90-60.20. Medium and large frame mixed 1-2 300-500# 59.00-64.50, lot thin 365# 66.40; 500-600# 58.00-62.00; 600-700# 58.50-62.30; 700-800# 57.75-61.30; few lots

New Holland Horse

New Holland Sales Stables
Monday, October 8

Report supplied by auction
Reported receipts of 330 head of horses, mules and ponies. Riding market steady.

LOCAL

Better horses 325.00-525.00.
Driving horses 250.00-850.00.
Riding horses 175.00-275.00.
Lightweight Killers 160.00-225.00,
Heavyweight Killers 250.00-345.00.
Mare ponies 25.00-75.00; Colts 10.00-20.00; Gelding ponies 25.00-75.00; Larger ponies 100.00-175.00, few registered 685.00-900.00.

**SWECKER
POLLED DORSET
DISPERSAL
SALE**

**SATURDAY
OCTOBER 27, 1984**



(IMMEDIATELY FOLLOWING VIRGINIA BRED EWE SALE)

**AUGUSTA EXPOLAND
STAUNTON, VIRGINIA
(Exit 16, OFF INTERSTATE 64)**

"A UNIQUE OFFERING OF SOUND, PRODUCTIVE, EWES"
★ ALL BREEDING EWES & YEARLING GUARANTEED BRED ★

**51
LOTS
SELL**

- 19 YEARLING EWES
- 16 BREEDING EWES
- 15 EWE LAMBS
- 1 STUD RAM

OVER 35 YEARS BREEDING DORSETS WITH THESE BLOODLINES OGAN, BIRCHWOOD, RATCLIFF, MAST, SQUIRES, PENN STATE, BAXTER.

**CONTACT US
FOR CATALOG**



Sale Managed by

KEN BRUBAKER
P.O. Box 149
Westtown, PA 19395
215/ 696 - 5483

SWECKER DORSETS
Star Rt. C. Box 5
Monterey, VA 24465
703/468-2308

4-H

FFA

**TOP
OF THE
CROP**

CLUB CALF & HEIFER SALE

SATURDAY, OCT. 20, 1984

10:30-PARADE OF CHAMPIONS

12:00-SALE TIME

**WARREN COUNTY FAIRGROUNDS
HARMONY, NEW JERSEY**

(Located 5 mi. Northeast of Easton, PA.)

**"THE BEST OF PUREBRED ANGUS HEIFERS
& STEERS TO BE OFFERED THIS FALL"**

**10-HEIFERS
LEADING BREEDERS**

- Big Brook Farms
- Genetics Unlimited
- Ideal Farm
- Overbrook Oaks
- Whipper Will Valley
- Warren Angus
- Rainbow Ridge
- Brook Hill Angus
- Grist Mill Farm
- Stavola Farms
- Shycreek Farms
- Hidden Springs
- Frank Walton
- Gaylon Farm

**KEN BRUBAKER
AUCTIONEER
AU-001862-L
215/696-5483**

ALL CATTLE
ARE HAND PICKED
AND ACCLIMATED
FOR PROJECT WORK

**25 STEERS
THE BEST SIRES**

- "Big Sky"
- "Independence"
- "Power Play"
- "Hi Guy"
- "Educator"
- "Dr Spock"
- "High Pockets"
- "Progression"
- "Bold Image"
- "Foolish Pride"
- "Pat-Ric-Henry"
- "Mr Angus"
- "Sir William"
- "22D"
- "High Rise"
- "Elector"

**JON REPAIR
609/882-8442**

**E. RANDALL MILLER
201/571-0152**

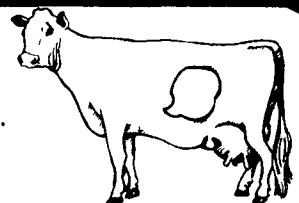
3rd IN A SERIES

**DAIRY FEEDING
Management**

THE OLD WAY:

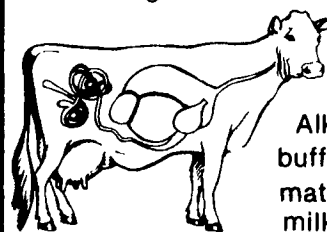
To treat herd excess acid problems with a single ingredient product that buffers only in the rumen.

Like taking just seltzer for an upset stomach.



YOUNG'S WAY:

To fight acid base imbalance with products that provide buffering action throughout the entire digestive system. Alka Culture® and Alka II™ buffer products increase dry matter intake and increases milk production.



Feed Management, we invented it over 80 years ago



young's

Livestock Nutritional Services

FREE GIFTS

For Buying Alka Culture® and Alka II™

See Your Young's Representative For Details

Offer good through November 30, 1984