

## Leslie Tyler wins Bob Evans horse

NEWARK, Del. — Fifteen-year-old Leslie Tyler has been raising horses nearly half her life. Now, finally, she has one of her own. Her newly acquired, five-month-old quarter horse weanling, Bekays Bar (more familiarly known as Justin), was a gift from famous sausage-maker and restaurateur Bob Evans.

Each year Evans holds a western-style roundup, complete with campfires and trail rides, on his 1,100-acre farm in Ohio. To this event he invites one lucky 4-H teenager from each of the 10 states where his products are sold. Those teenagers, chosen by their respective states for citizenship and exemplary performance in the 4-H horse project, return with their own quarter horse weanlings.

Leslie, the youngest of four daughters of Helen and Ronald Tyler, lives with her family on a horse farm located between Glasgow and Middletown. Ronald Tyler started "Tyloria Acres" as a sideline while working for the

Chrysler Corporation. Now that he is retired, the horse farm is the family's full-time business.

The Tylers breed and raise horses for sale, give riding lessons, and train animals for others. One standardbred horse they broke went on to a successful racing career.

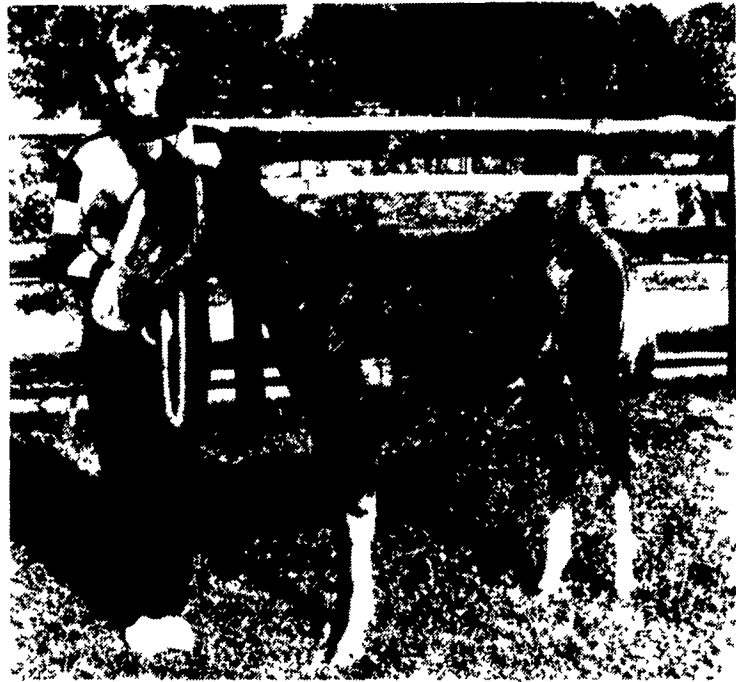
Leslie has participated in all phases of the family enterprise. A six-year member of the 4-H horse project, she has trained and shown several horses, but all either belonged to someone else or were destined for later sale. Justin is the first horse that is hers alone.

Leslie is very pleased with Justin. He's a pleasant, easy-tempered young animal, a sorrel with four white socks. She plans to show him at the state 4-H horse show and the Delaware State Fair. She won't be able to ride him until he is two years old, but for now she's having a good time grooming him, teaching him to stand properly, and taking him along while she jogs around the neigh-

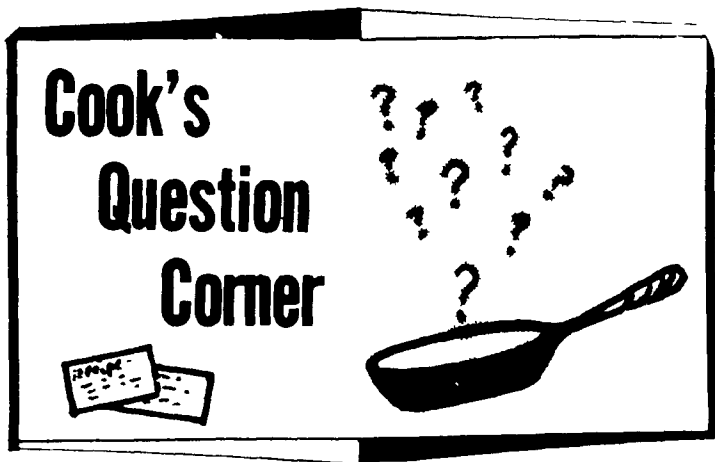
borhood. At his tender age she's careful not to work him longer than 15 minutes at a time.

Leslie's skill with horses is evident in her assured handling of Justin and from the many trophies and ribbons she's won for showing and judging. She won first place for two consecutive years in the 4-H county horse judging competition. She also took the English pleasure championship at the 4-H horse show in 1982, and the hunter horse reserve championship in 1983. As a junior 4-H leader, she also helps younger members with their riding and judging.

Leslie's older sister, Denise, is studying animal science at the University of Delaware, and plans to make horses her career. Leslie, who is studying drafting at Delcastle High School, looks forward to a career in engineering, but is certain that horses will always be an important part of her life.



Newark 4-H'er Leslie Tyler shows off her horse, Justin, who was a gift from Bob Evans, the famous sausage-maker and restaurateur.



**QUESTION** - Mrs. Mary Wolfinger, Ottsville, would like a recipe for white fudge that hardens itself while cooking and that doesn't have to be beaten to harden.

**QUESTION** - F. Rahn, Spring Grove, would like a recipe for granola bars.

**QUESTION** - Mary Ellen Wise is still looking for a recipe for fudge like you used to buy at a Silco store about 25 years ago.

**QUESTION** - Andrew C. Keener, Womelsdorf, is still looking for a recipe for cup cheese.

## Extension schedules Energy Conservation series

FLEMINGTON, N.J. — It is not too early to be thinking about "Old Man Winter." Are you and your home ready for winter? You can find out by attending the "Home Energy Conservation Series." This program, to be held on four consecutive Thursdays beginning Oct. 11, will feature timely topics.

Join us the first night to listen to Dr. Joseph Ponessa, Rutgers Extension Specialist in Housing and Energy, talk on "Simple Maintenance of Home Heating Systems."

The second night, Oct. 18, Dr. Ponessa will present a program on "Indoor Air Pollution...Is Your Home Too Tight?" Oct. 25 will feature Nancy Crutchfield, extension home economist, and "Window Warm-ups," window treatments to cut down on heat loss in winter. During second half of the same evening County Ag Agent

Elaine Barbour will present a program on "Landscaping for Energy Conservation."

The last evening in the series, Nov. 1, will highlight woodburning stoves with Martin Decker, Rutgers extension specialist in safety and Cal Wettstein, senior county agent. Dick Townsend of the Clinton Energy Center will also talk about coal burning stoves. These stoves will be on display.

All programs will be held at the extension services building, along

Route 31, just north of the Hunterdon Medical Center in Flemington.

All programs are two hours long and will start promptly at 7:30 p.m. The cost for the series is \$4 and preregistration is a must. Call the extension office at (201) 788-1338.

Checks should be made payable to "Agricultural Advisory Council" and mailed to Elaine Barbour, 4 Gauntt Place, Flemington, New Jersey 08822.

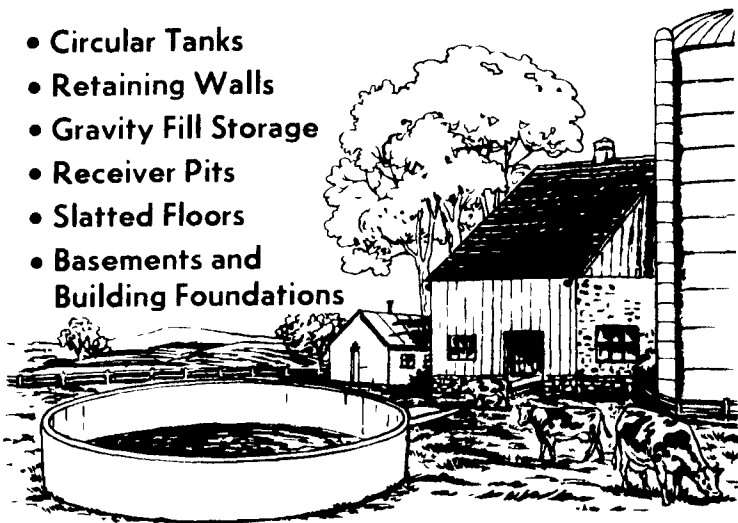
**IT'S MAGIC**  
How quickly  
You Get Results  
From Our  
Classifieds!

PHONE  
717-394-3047  
or 717-626-1164



## POURED REINFORCED CONCRETE CONSTRUCTION

- Circular Tanks
- Retaining Walls
- Gravity Fill Storage
- Receiver Pits
- Slatted Floors
- Basements and Building Foundations



### SIZES & LAYOUTS TO YOUR SPECIFICATIONS

We are qualified to handle any poured concrete job you may need. We use a practical aluminum forming system to create concrete structures of maximum strength and durability. For a highly satisfactory job at an affordable price, get in touch with us.

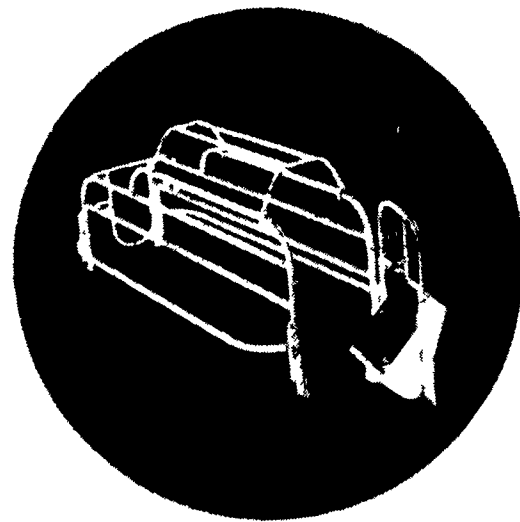
### POURED FOR DURABILITY

**Groffdale**  
concrete walls, inc.

BRICK CHURCH RD. LEOLA, PA. 17540

FOR SALES & LAYOUT CONTACT  
GROFFDALE POURED WALLS (717) 656-2016  
JAKE KING (717) 656-7566

## FARMER BOY AG FARROWING CRATE



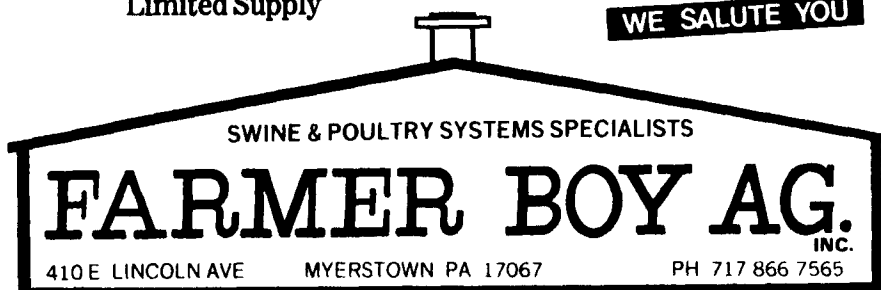
Farmer Boy Ag crates reduce creep crushings because they are narrow at the top and wide at the bottom. This design prevents the sow from turning and ensures that she takes extra care in rising and lying down. The full access, adjustable rear bumper gate allows easier entry or exit. The all welded, 1½" square steel tube construction, with its smooth bends, eliminate sharp edges that can cause injury.

**SAVE 30% OFF**

Our Regular Price  
Limited Supply

**PORK PRODUCERS**

**WE SALUTE YOU**



**BEST IN DESIGN, PRICE AND EXPERIENCE**