

Reading Fair

(Continued from Page A38)

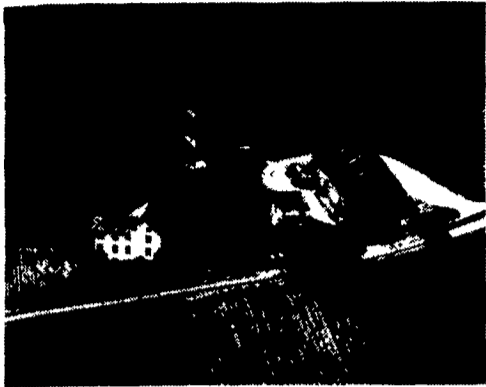
- Champion Heavyweight**
Greg Stricker
- Reserve Champion Heavyweight**
Todd Rabinold
- Champion Pair of Market Swine**
Kirk Fisher
- Res. Champion Pair of Market Swine**
Greg Stricker
- Market Lambs**
Pen of Lambs
Lightweight
1 Earl George Neffs 2 Glenn Heffner RD 2 Fleetwood 3 Jodie Frantz Schnecksville
- Middleweight**
1 Roy Sutliff RD 1 Mohrsville 2 Joshua Grim RD 2 Breinigsville 3 Jennifer Schnabel RD 3 Kutztown
- Heavyweight**
1 Karen Stutzman RD 1 Kutztown 2 Amy Eshelman RD 6 Sinking Spring 3 Cory McLaughlin RD 1 Bernville
- Individual**
Grand Champion-Pen of Lambs
Karen Stutzman
- Light Lightweight**
1 Travis Werley Shoemakersville 2 Megan Perry RD 2 Hamburg 3 Kelly Huseman Sinking Spring
- Medium Lightweight**
1 Marianne Yanos RD 2 Douglassville 2 Earl George 3 Troy Werley Shoemakersville
- Heavy Lightweight**
1 Jodie Frantz 2 Megan Perry 3 Jennifer Schnabel
- Light Middleweight**
1 Tricia Werley Shoemakersville 2 Joshua

- Grim 3 Glenn Heffner
- Medium Middleweight**
1 Marianne Yanos 2 Jennifer Schnabel 3 Gwendolyn Perry RD 2 Hamburg
- Heavy Middleweight**
1 Kenanne Rarick RD 2 Reading 2 Chris Dietrich RD 1 Hamburg 3 James Heffner RD 2 Fleetwood
- Light Heavyweight**
1 Amy Eshelman 2 Jodie Frantz 3 Joyce Heffner RD 2 Fleetwood
- Medium Heavyweight**
1 Karen Stutzman 2 Troy Werley 3 Amy Eshelman
- Heavy Heavyweight**
1 Karen Stutzman 2 Mike Koehler 3 Cory McLaughlin
- Grand Champion**
Karen Stutzman
- Reserve Grand Champion**
Karen Stutzman
- Champion Dorset Ewe**
Mike Koehler Allentown
- Res. Champion Dorset Ewe**
Mike Koehler
- Champion Hampshire Ewe**
Joshua Grim Breinigsville
- Res. Champion Hampshire Ewe**
Joshua Grim
- Champion Shropshire Ewe**
Tracy Frantz Schnecksville
- Res. Champion Shropshire Ewe**
Roy Sutliff Mohrsville
- Champion Southdown Ewe**
Marianne Yanos, Douglassville
- Res. Champion Southdown Ewe**
Ann Peters Allentown
- Champion Suffolk Ewe**
Steve Ernst Sinking Spring
- Res. Champion Suffolk Ewe**
Steve Ernst
- Champion Cheviot Ewe**
Mike Koehler
- Res. Champion Cheviot Ewe**
Joyce Heffner Fleetwood
- Champion Oxford Ewe**
Glenn Heffner Fleetwood
- Res. Champion Oxford Ewe**
Glenn Heffner
- Age 15 & Over**
1 Joshua Grim RD 2 Breinigsville 2 Glenn Heffner RD 2 Fleetwood
- Ages 8 to 14**
1 Tricia Werley Shoemakersville 2 Gwendolyn Perry RD 2 Hamburg 3 Cory McLaughlin RD 1 Bernville
- Grand Champion Ewe**
Of The Fair
Mike Koehler Dorset
- Reserve Grand Champion Ewe**
Of The Fair
Glenn Heffner Oxford
- Fitting & Showmanship**
Showmanship
Senior
1 Tracy Lynn Frantz Schnecksville 2 James
- Heffner RD 2 Fleetwood 3 Joshua Grim RD 2 Breinigsville**
- Intermediate**
1 Karen Stutzman RD 1 Kutztown 2 Glenn Heffner RD 2 Fleetwood 3 Marianne Yanos RD 2 Douglassville
- Junior**
1 Amy Eshelman RD 6 Sinking Spring 2 Joyce Heffner RD 2 Fleetwood 3 Travis Werley Shoemakersville
- Grand Champion Showman**
Karen Stutzman
- Reserve Grand Champion Showman**
Tracy Frantz
- Fitting**
Senior
1 Mike Koehler Allentown 2 James Heffner 3 Tracy Lynn Frantz
- Intermediate**
1 Karen Stutzman 2 Jodie Frantz Schnecksville 3 Glenn Heffner
- Junior**
1 Joyce Heffner 2 Amy Eshelman 3 Travis Werley
- Grand Champion Fitter**
Mike Koehler
- Reserve Grand Champion Fitter**
Karen Stutzman
- Dairy Goats-Open**
Alpine
Class 1
Cheryl Eschbach 1st and 2nd Debbie Price 3rd
- Class 2**
Kent Fisher 1st
- Class 3**
Lee Blouch RD Bethel 1st Margaret Schoenly 2nd Debbie Price 3rd
- Jr. Champion & Reserve**
Cheryl Eschbach
- Class 4**
Cheryl Eschbach 1st Debbie Price 2nd Margaret Schoenly 3rd
- Class 5**
Kent Fisher 1st
- Class 6**
Debbie Price 1st Mark Blouch 2nd
- Senior Champion**
Cheryl Eschbach
- Reserve**
Debbie Price
- Grand Champion**
Cheryl Eschbach
- Reserve**
Debbie Price
- Class 8-Get of Sire**
Cheryl Eschbach 1st Debbie Price 2nd
- Class 9-Dam & Daughter**
Cheryl Eschbach 1st Debbie Price 2nd Kent Fisher 3rd
- Class 11-Best Udder**
Cheryl Eschbach 1st Kent Fisher 2nd Debbie Price 3rd

PUBLIC AUCTION

56 ACRE FARM
ANTIQUES, HOUSEHOLD ITEMS
WEDNESDAY, OCT. 31, 1984
Real Estate at 11:00 A.M.

Barn & Household Items 10:00 A.M.
LOCATION: Take Rt. 272 to 1st intersect. south of WDAC radio tower. Go west on Rawlinsville Ave. to AUCTION on left. Providence Twp. Lanc. County, Pa. Watch for AUCTION SIGNS.



REAL ESTATE consists of 56 acres + total. 2-2½ story frame houses, barn, 12 acres & tillable on southside of Rawlinsville Ave. Balance of 44 acres + being North & West of Rawlin. Ave. UNIT #1: Large farm house w/kitchen, livingroom, diningroom, 4 bedrooms, full bath on 1st and 2nd floor, full basement, oil fired hot air heat, 52 gal. water heater and attic. Second house, now being rented, has kitchen, living and dining rooms, 2 bedrooms, 1 bath, ½ basement, oil fired hot air, 52 gal. water heater, attic, storm screen doors and shingle roof. **BANK BARN:** is 36'x92', built in 1969, space for 4 acres tobacco, stripping room, hay storage and in new condit. Out-buildings: bunk house, shop area, and wooden sheds. Add 12 acres +/- land.

UNIT #2: 42 acres +/- TILLABLE land in high state of cultivation.

NOTE: REAL ESTATE will be offered in two UNITS. Unit #1: 2 houses, barn and 12 acres +/-, ideal for horse farm or gentleman farmer. Unit #2: 44 acres +/- These parcels will also be offered by the entirety as 56 acres with buildings.

TERMS on Real Estate: 10% down day of sale; 10% down day of settlement which is on or before Dec. 31, 1984. OWNER FINANCING AVAILABLE or with HAMILTON BANK. CHECK WITH AUCTIONEER FOR INFORMATION About FINANCING. REAL ESTATE Inspection: By Appointment Only. Call AUCTIONEER at 717-569-2079.

ANTIQUES

Adrian and Oak Ingraham Co. mantel clocks, "Authentic History of Lanc. County" by J.J. Mombert D.D. dated 1869, BRASS POWDER FLASK, Wm. McKinley & Roosevelt camp buttons, Bead purses. TIN: cigarette box, cookie cutters, bank, 'JIMMY CRICKET' mech TOYS, Line Mar Toys, Walt Disney Prod. in excel. condit., "Sea Ledges" signed Wallace Nutting other W. Nutting Prints, Wickham Phila. durby w/hat box, Chesterfield coat w/fur collar excel. condit., Roseville nest of bowls, mini. Ger. stem, linens, baskets, cast iron trivet, troughs, oak pict. frames and towel rack. AUTOMOBILE: 67 Dodge Polara, 4 door, AT, PS, 75,000.

HOUSEHOLD, BARN ITEMS

GRAINED BLANKET CHEST, wing chair, book, and plant stands, drop leaf card table, wicker sewing cabinet, blonde bedroom suite, dresser w/mirror, birds eye maple vanity, LARGE DRAFTING TABLE w/5 drawers & stool, 32 ft. Alum. exten. ladder, 8 mm Revere Movie Project, 10'x14' Miraz oriental style rug, G.E. refrig. various small appliance, books, records, Xmas decor., planters, lamps, elect. motors, lawn, garden and sm. shop tools, tree pruner, barn fan, 7300 TOBACCO LATH and many items too numerous to mention. PERSONAL PROPERTY Inspection at 9:00 A.M. day of sale.

TERMS: Cash, certified check or established customer checks.

AUCTION BY
ARTHUR E. &
ELIZABETH H. KURTZ

J. Elvin Kraybill, Att.
Auction Conducted by:
AMERICAN AUCTION SERVICE
Kenneth Welsh, Auct.
Manheim, Pa.
Alfred G. Reist, Auct.
AU-001637L
Lanc. Pa. 717-569-2079

Lunch by
Smithville Church of God

PUBLIC AUCTION

OF FARM EQUIPMENT,
HOUSEHOLD GOODS & ANTIQUES
SAT., OCTOBER 10, 1984

@ 9:30 A.M.

LOCATED approx. 2 miles E. of Lititz, along 655 Owl Hill Road, Lititz, Pa.

JOHN DEERE B. Tractor w/manure loader & cultivators, ALLIS CHALMERS B w/plow & cultivators, JOHN DEERE Grain Drill (13 hole), JOHN DEERE Plow (2-14), JOHN DEERE 24 tooth 3 pt. hitch harrow, JOHN DEERE 28 Disc - Harrow, HERSHEY 2 row Transplanter, NEW IDEA Manure Spreader, NEW IDEA 1 row corn picker, BLACK HAWK 2 row corn planter, 1 row tobacco hoer w/Briggs & Stratton Motor, 21' Tobacco Ladder, 1950 FORD 5 ton flatbed Truck, AC CASE Tractor (doesn't run), High Pressure waterpump w/water tank & 200' of 1¼" & 1½" pipe, MINNICH Bale Box, 8 steel wheels, shovel plow, 150 steel posts, cast iron hog troughs, turkey picker, turkey debeaker, platform scales, wooden scalding trough, Butcher stove. (signed Frank B. Benson, Brunnerville, Pa. Iron Kettle, Meat Grinder, Sausage stuffer, Hog Scrappers, & Scrap Iron.

CRAFTSMAN Riding Moer 10 H.P. 36" cut, JOHN DEERE self-propelled lawn mower, ARIENS Rototiller, JOHN DEERE Chain Saw, Sears 1 h.p. 2 cylinder air-compressor, CRAFTSMAN Bush Wacker (10" gas powered), SKIL power saw, CRAFTSMAN Table saw, Wheelbarrow, 40' ext. ladder, Grease Pump, Chain Hoist, Battery Charger, BLACK & DECKER bench grinder, 3/8 Drill, Tool boxes, wrenches, socket sets, sledge hammers, plus many assorted tools. 4,000 tobacco lath, 4"x4"x20' scaffolding, plus other lumber.

20'x30' OLD 2 STORY BARN WITH BROAD WEATHERED BOARDS. BARN TO BE SOLD AND TORN DOWN. DON'T MISS YOUR CHANCE AT GOOD OLD BOARDS AND HAND HEWN LOGS.

Oak kitchen cabinet, 10 pc. dining room suite, 4 pc. walnut bedroom suite, Secretary bookcase Desk, Breakfast set w/8 chairs, single bed w/boxspring & mattress, Cedar Chest, Cedar wardrobe, Clovertop table, Platform rocker, End Tables, MAYTAG wringer wash machine, Early floor model Philco radio, window fan, utility cabinet, Sunbeam mixer, old picture frames, lamps, family Bible, Alladin Kerosene heater, Eureka Vacuum cleaner, Agate ware, Tin ware, Depression Glass, Cut Glass, COURTSHIP Pattern Tea Set, Hand Painted Tea Set, Miniature Tea Set, Hall ware, Crocks (1, 3, & 5 gal.), Bottles, Insulators, Jars, Linens, Blankets, Afghans, & lots of old buttons, plus many other items too numerous to mention.

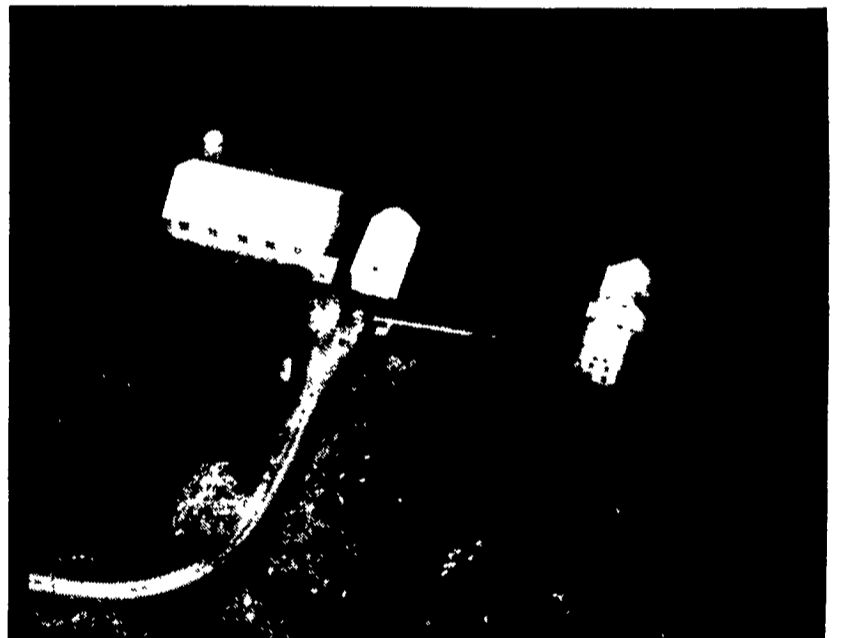
Lunch available.

SALE BY:
HARRY M. SHANK

Amos Sensenig, Auctioneer
AU-008252-L (717) 626-4332
Sanford G. Leaman, Auct.
AU-000532-L (717) 569-4264

SANFORD G. LEAMAN, REALTOR

AUCTIONEER
ESTATES • APPRAISALS • LIQUIDATIONS



Ralph L. Eberly Estate

PUBLIC SALE
OF VALUABLE REAL ESTATE
& PERSONAL PROPERTY
SATURDAY, OCT. 27, 1984
Personal Property 11:00 A.M.
Real Estate 1:00 P.M.

Location: Millcreek Twp.; Lebanon Co., Pa. Along the Stricklerstown Road between Cocalico & Newmanstown.

Directions: From Schaefferstown, Pa. take Rt. 419 north to village of Millbach (approx. 5 miles) turn right at church, go to stop sign, turn right (go approx. ¼ mi.) turn left (Legislative Rt. 38012) go approx. 1 mi. to intersection (crossroad) turn right onto Stricklerstown Road, go approx. ¼ mi. to 1st farm on the right. 2 miles Southwest of Newmanstown.

Real Estate: Parcel #1 - Approx. 119.62 acre farm w/approx. 4521' road frontage, approx. 96 acres tillable, pasture w/never failing stream, 2 story sand stone, 5 bay bank barn, 2 story implement shed w/corn cribs and 2, 2½ story dwellings.

Parcel #2 - Approx. 24 acres 3 perches tract of land w/approx. 8½ acres tillable, balance woodland w/stream at the foot of the South Mountain. Both parcels will be sold separately. For more information on properties, phone auctioneer. (717) 865-5129 or (717) 272-7078.

1950 Packard automobile, 4-door Sedan
Terms: 10% Down, Balance within 30 days.

Auctioneers:
Clayton C. Kleinfelter & Sons,
AU-000497-L
105 Chapel St.
Lebanon, Pa. 17042

Terms & Conditions by
ORDER OF ADMINISTRATORS
PAUL A. EBERLY
(717) 949-3653
CURT W. EBERLY
(717) 949-6842
HUGH L. EBERLY
(215) 589-2011
Atty. WM. E. SCHADLER

Not Responsible For Accidents
Lunch & Refreshments Available—
U.C.C., Millbach, Pa.