

Dairy and Livestock Sales

Public Auction Register

Closing Date Monday, 5:00 P.M.
of each week's publication

SAT. OCT 20 - 10 AM
Public Auction of Valuable Farm Equipment, Household and Antique Items located along Anchor Road, Manor Twp., Lancaster Co., PA. Coming from Millersville by Rt. 999 at Central Manor Church of God. Go left on Blue Rock Rd., first left on Gamber Road. Follow Gamber Road to Anchor Road, turn right 1/2 mile to farm on left. Auction for Kendig H. Deitrich. E.M. Murry Associates, Auctioneers

SAT. OCT 20 - 1 PM
Public Auction of a Club Calf Sale. Located at J.C. Enterprises, Box 190, Ringgold, PA. Ringgold is 10 miles west of Punxsutawney on Rt. 536. Les Haller, Cattle Manager

SAT OCT 20 - 9:30 AM
Public Sale of Real Estate and Household Goods located 419 North Spruce St., Elizabethtown, PA. Sale by Rev. Earl G. and Miriam Eshleman Wolgemuth Auction Service, C.H. Bob, and Dennis, Auctioneers

SAT OCT 20 - 11 AM
Public Auction of the White-Lawn Dairy Farm. Selling 72 Head Holstein Cows, Heifers. Located 1 1/2 miles from Washington, PA. Off I-70 and I-79, take Rt. 19 north or Rt. 136 east to 195 Davis School Rd. Davis School Rd. is between Rt. 19 North and 136 east on Rt. 19 north behind Red Bull Inn, and 1 mile from Meadows Race Track. George Pusharich, Jr., Owner

Clair Kearns & Harry Kearns, Auctioneers

SAT OCT 20 10:30 AM
Public Auction of Tractors, Machinery, Implements, Guns & Property. Located 4 miles west of Blain on Rt. 274 in New Germantown, PA. Perry Co. Dave Briner, Owner. Chuck Bricker, Auctioneer

JERSEY SHORE LIVESTOCK AUCTION

Under New Ownership
New time of Livestock Sale
Thursdays at 4 PM
For Information Call
814-349-8760 or 717-398-0111

Jersey Shore I
P.O. Box 271
RD 2
Jersey Shore, PA
2 miles South of
Jersey Shore Rt. 44

PUBLIC AUCTION

COMPLETE HOLSTEIN DISPERSAL
THURSDAY, OCT. 18, 1984

At 12:00 Noon

Located in Centre Co., 11 Miles East Of Centre Hall, Pa., 1st Farm East Of Madisonburg Off Route 192.

61 Head Top Grade Holsteins

43 milk cows, 3 springing heifers, 3 bred heifers, 2 service age bulls, 10 open heifers and started calves.

1983 Owner Sampler herd ave. 20,918 milk, 3.6, 750 fat, a Belmont w/3 records over 22,000 milk, a Starchief heifer due Dec. out of Dam w/over 30,000 milk in 350 days, a 6 yrs. old due Nov. made over 1200 fat in 305 days w/service age son selling, other good records, several have milked 100 lbs. per day. Majority sired by A.B.S. sires.

10 cows recently fresh, 7 due Oct. and Nov., 7 due Jan. and Feb., vacc. for Lepto. and 30 days health tests.

Terms-CASH OR APPROVED CHECK

Sale under cover if needed

SAMUEL D. BEILER

Box 33-A
Rebersburg, Pa.

Mark Glick-Auctioneer
Reedsville, Pa.
AU-349-L

Lunch at sale

SPECIAL HORSE SALE DRIVING & WORK HORSES

MONDAY, OCTOBER 8, 1984

10:00 A.M.

AT NEW HOLLAND SALES STABLES, INC.

12 Miles East of Lancaster, Pa. just off Rt. 23, New Holland, Pa.



* 1 load Standardbred Driving and Work Horses consigned by Ward Wright.

* 1 load Driving Horses consigned by Jonas Beiler.

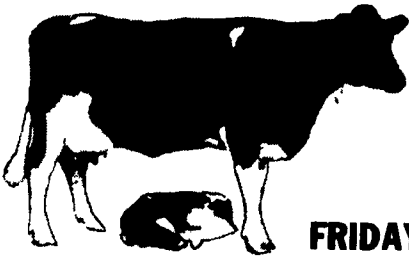
* 1 load Driving Horses consigned by Levi B. Stoltzfus.

* 1 load Driving Horses consigned by Reuben G. Stoltzfus.

For more information contact:

Abe Diffenbach, Mgr.
717-354-4341

Norman Kolb
717-397-5538



COMPLETE HERD DISPERSAL OF TRIPLE "H" FARMS PEACH BOTTOM, PA.

FRIDAY NIGHT OCT. 12, 1984

7:30 P.M. SHARP

at Shady Lane Dairy Sales Inc. 1/4 Mile West of Quarryville, Pa. of Rt. 372 on Oak Bottom Road.

ROLLING HERD AVERAGE DHIA
107.4 305 16,006 3.8 609f

Herd consists of 125 head of holstein cows and large springing heifers. Over 50 head now producing over 60 lbs. a day and increasing daily. 25 just fresh.

Top records include—

448-305	21234	3.5	746
607-305	19416	3.7	718
665-305	21180	3.5	746
692-297	20142	3.7	736
807-287	17386	4.0	703
853-292	16964	4.2	716

35 head of dry and springing cows and heifers due from sale day to Christmas. Bred to top Atlantic bulls. Balance of herd also bred Atlantic.

Service sires include—

Marvex, Apollo Rocket, Superior, Titan, Mariner, Mandate, Oakstar, Ganster, Stewart and very. This is a top young herd with over 25 first and second calf producing cows on test-balance mostly under 6 years of age.

Pregnancy Examined

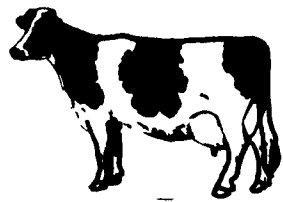
30 T.B. & Blood Test
Certified and Accredited

Managed by
SHADY LANE DAIRY SALES, INC.
Quarryville, Pa.

David L. Fite
717-786-1725

Glenn D. Fite
717-786-2750

October 19 Sale — Robert Hershberger, all Grade cows in herd. 52 New Jersey cows milking 80 to 90 lbs. Complete ad next week.



NEW HOLLAND SALES STABLES, INC.

New Holland, Pa.

DAIRY SALE CONSIGNMENTS

For

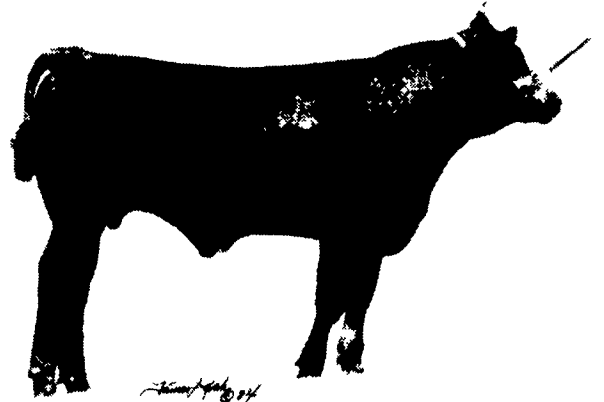
WEDNESDAY, OCTOBER 10th, 1984

- * 1 load of fresh and springer cows consigned by Norman and David Kolb.
- * 1 load of purebred and grade fresh and springer cows consigned by H.D. Matz.
- * 1 load of fresh and springer cows - Marvin Eshelman.
- * 1 load of fresh cows - Alfred Albright.
- * 1 load of fresh and springer cows - Raymond Smucker.
- * 1 load of fresh and springer cows - Merle Breneman.
- * 1 load purebred and grade Canadian cows, fresh and springers, consigned by Leroy Smucker.

CLUB CALF SALE

at the farm

SAT. OCT. 20-1 PM



Just one of the Champions from last years sale
60 TOP 3/4-5/8 CHI-X MARCH thru JUNE STEERS
Mostly BLACK plus BWF, RED, GRAY

J.C. ENTERPRISES

P.O. Box 190 RINGGOLD, PA. 15770

Les Haller, Cattle Manager

(814) 365-5821 office

365-5459 evenings

Ringgold is 10 MI. West of Punxsutawney on RT. 536

PUBLIC AUCTION

SATURDAY, OCTOBER 20, 1984

TIME-11:00 A.M.

WHITE-LAWN DAIRY FARM

195 Davis School Rd.

Washington, Pa. 15301

Located 1 1/2 miles from Washington, Pa. Off I-70 and I-79 take Rt. 19 North or Rt. 136 East to 195 Davis School Rd. Davis School Rd. is located between Rt. 19 N. and 136 E. On Rt. 19 N. behind Red Bull Inn, and 1 mi. from Meadows Race Track. Watch for Auction Signs.

72 HEAD HOLSTEIN COWS, HEIFERS 72

Selling out due to Health

62 head of Holstein Cows

10 head of Holstein Heifers

10 cows to be fresh at sale time in Oct. or few days after

8 cows due in Nov. 1984

5 cows due in Dec. 1984

2 cows due in Jan. 1985

6 cows due in Feb. 1985

The rest of cows in different lactation, so many due each month.

10 head Holstein Heifers-First Calf

Due late Nov. or Dec. 1984

Herd is T.B. and Bang Tested, and Vaccinated for Lepto. Health Charts are Available.

TERMS: Cash, Travelers Checks, Cashier, or Certified Cks.

Owner:

GEORGE PUSHARICH JR.

195 Davis School Rd.

Washington, Pa. 15301

Phone: 412-225-4606 (Day)

412-222-6242 (evenings)

AUCTIONEERS: Clair Kearns,
AU-000-469-L

Harry Kearns
412-239-2124

Bruce Smith,

Apprentice:

AA-001132-L

P.S. Auctioneer notes: White Lawn Dairy has been in business for 52 years, one of the finest grade herd of Holstein Cows and Heifers in Washington County.

Clip Ad