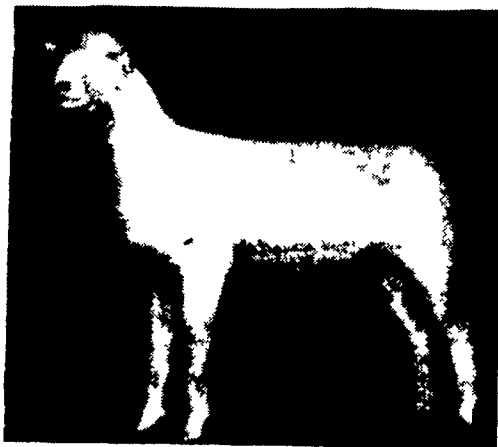


# SWECKER POLLED DORSET DISPERSAL SALE

**SATURDAY  
OCTOBER 27, 1984**



(IMMEDIATELY FOLLOWING VIRGINIA BRED EWE SALE)

**AUGUSTA EXPOLAND  
STAUNTION, VIRGINIA**

**(Exit 16, OFF INTERSTATE 64)**

"A UNIQUE OFFERING OF SOUND, PRODUCTIVE, EWES"

★ ALL BREEDING EWES & YEARLING GUARANTEED BRED ★

**51  
LOTS  
SELL**

- 19 YEARLING EWES
- 16 BREEDING EWES
- 15 EWE LAMBS
- 1 STUD RAM

OVER 35 YEARS BREEDING DORSETS WITH THESE BLOODLINES OGAN, BIRCHWOOD, RATCLIFF, MAST, SQUIRES, PENN STATE, BAXTER.

**CONTACT US  
FOR CATALOG**

**SWECKER DORSETS**

Star Rt. C. Box 5  
Monterey, VA 24465  
703/468-2308

*Sale Managed by*



KEN BRUBAKER  
P.O. Box 149  
Westtown, PA 19395  
215/696-5483

## St. Louis Cattle

Thursday, October 4

Report supplied by USDA

Receipts This Week	2,500
Last Week	2,900
Last Year	3,300

Compared to the previous week's close, Slaughter Steers .50-1.00 lower. Slaughter Heifers 1.50-2.00 lower through mid-week, not tested late. Cows fully 1.00-2.00 higher. Bulls steady. Slaughter supply mainly choice Steers and Heifers, around 10% Cows.

**SLAUGHTER STEERS:** Mixed Choice and Prime 2-4 1075-1300 lbs. 60.00-60.50 early, few lat sales 61.00-61.50, part load 1285 lbs. 61.75. Choice 2-4 1000-1300 lbs. 59.00-61.50, closing 60.00-61.50; 900-1000 lbs. 57.00-60.00; 850-900 lbs. 56.00-57.00. Mixed Good and Choice 2-3 900-1200 lbs. 57.00-60.00. Good 2-3 900-1175 lbs. 55.00-58.00; 850-900 lbs. 55.00-56.00. Mostly Good 2-3 1050-1350 lb. Holsteins 51.00-56.00. Standard to Good 48.00-51.00.

**SLAUGHTER HEIFERS:** (through mid week) Mixed Choice and Prime 2-4 900-1075 lbs. 58.00-58.50, package 1050 lbs. 59.00. Choice 2-4 900-1100 lbs. 57.00-58.00; 800-900 lbs. 55.00-57.00. Mixed good and Choice 2-3 800-1000 lbs. 55.00-57.00. Good 2-3 750-975 lbs. 52.00-55.00. Few 700-750 lbs. 48.00-52.00.

**COWS:** (Closing week sales) Breaking Utility and Commercial 2-4 37.00-40.00. Cutter and boning Utility 1-2 37.00-40.00. High yielding boning Utility 1-2 mostly 40.00, few up to 41.00. Canner and low Cutter 1-2 34.00-37.00. Shelly canner 1-2 31.00-34.00.

**BULLS:** YG 1-2 1100-1950 lbs. 43.00-47.00, few YG 1 48.00.

Wednesday's Weekly Sheep Auction. Receipts around 600 head. Compared with last week, Slaughter Lambs sold steady, with best demand for Lambs weighing over 100 lbs. Feeder Lambs sold weak.

**SLAUGHTER LAMBS:** Choice

and Prime woolled and shorn with No. 1-2 pelts 95-100 lbs. 59.00-67.00.

**SLAUGHTER EWES:** Few Mostly Good 11.00-13.00.

**FEEDER LAMBS:** Choice and Fancy 65-75 lbs. 55.00-57.50

**FEEDERS:** (including around 1,000 at the regular Thursday auction.) Light to moderate supply of no. 1 muscled Steers and Heifers 1.00-2.00 higher. Supplies mostly Steers under 800 lbs. and Heifers under 600 lbs.

**FEEDER STEERS:** Medium and Large Frame 1: 400-600 lbs. 63.00-68.50; 600-800 lbs. 61.00-64.00. Medium and Large Frame 1-2: few 400-800 lbs. 53.00-58.50. Large Frame No. 2 Holsteins: 400-925 lbs. 41.25-43.75.

**FEEDER HEIFERS:** Medium and Large Frame 1: 400-600 lbs. 52.00-58.00. Medium and Large Frame 1-2; a few 450-650 lbs. 44.00-52.00. Small Frame 1: few 300-425 lbs. 45.00-47.00.

## Joliet Cattle

Thursday, October 4

Report supplied by USDA

**CATTLE:** Friday through Wednesday's salable receipts 1400; same period a week ago 1041; same period a year ago 2570. Trading moderately active for the week. Slaughter Steers closed the week mostly 1.00 higher. Slaughter Heifers ended the week mostly steady, instances .50 higher. Cows closed the week steady.

**SLAUGHTER STEERS:** Choice, few Prime, 3-4 1225-1350 lbs. 63.00-63.50 Monday; 2 loads 64.00. Choice 2-4 1050-1250 lbs. 60.00-63.00, mostly 61.00-62.50 Monday, few loads 63.00-64.00 Wednesday. Mixed Good and Choice 2-3 1000-1200 lbs. 59.00-60.50 Monday.

**SLAUGHTER HEIFERS:** Choice 2-4 900-1100 lb. 58.00-59.75 Monday, couple loads 60.00-61.00 Wednesday. Mixed Good and Choice 2-3 850-1050 lbs. 56.00-58.50.

**COWS:** Few High Cutter 1-2 38.00-39.00 Wednesday.

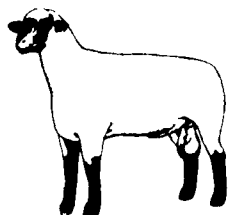
# VIRGINIA BRED EWE & EWE LAMB SALE

**SATURDAY, OCTOBER 27, 1984**

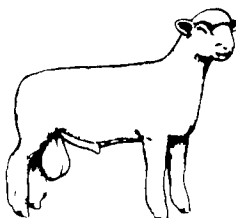
**AUGUSTA EXPOLAND**

**STAUNTON, VIRGINIA**

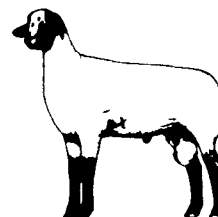
**(Exit 16 Off Interstate 64)**



HAMPSHIRE



DORSET



SUFFOLK

- Leading Consignment From Breeders In Virginia, West Virginia, New Jersey and Pennsylvania
- Ewes Will Be Pregnancy Tested And Guaranteed Bred
- Yearling Ewes — Fall Ewe Lambs — Spring Ewe Lambs
- Health Papers And Trucking Available To Out-Of-State Buyers
- Mail Or Phone Orders Excepted By Qualified Buyers
- An Excellant Opportunity to Incorporate New Bloodlines In Your Flock



Sale Managed by:  
**KEN BRUBAKER**  
P.O. Box 149  
Westtown, PA 19395  
215/696-5483

**WRITE OR CALL FOR CATALOGS**