

THE OLD FARMER'S ALMANAC

SEPT. 24-30, 1984

Echoes of summer in these balmy days.

Bring in green tomatoes now *Pilgrim's Progress* published Sept 28, 1678
Tornado in St. Louis killed 90, caused \$40 million damage, Sept 29, 1927 Average
length of days for the week, 11 hours, 56 minutes New moon Sept 24 (Mon)
Harvard Medical School opened to women Sept 25, 1944 *There is a great
difference between imitating a good man, and counterfeiting him*



Ask the Old Farmer: Would you give the origin and significance of the placing of an eagle over the front door of a home? S.R., Fort Wayne, Ind. *It is said that the Norsemen hung scalps of wolves horns of animals and other relics of the chase over their doorways a thousand years ago. Our notion is that the eagle of wood or metal is an adaptation of the ancient custom.*

Home Hint: When storing paint fit the lids of the cans tightly then store the cans upside down. This eliminates film on the paint.

OLD FARMER'S WEATHER FORECAST

New England: Week starts clear and warm mid through end of week partly cloudy continuing warm

Greater New York-New Jersey: Beginning of week clear and hot mid through end of week partly cloudy and warm

Middle Atlantic Coastal: Partly cloudy and warm to start week, midweek clear and warm cloudy and warm by week's end

(All Rights Reserved Yankee Publishing, Incorporated, Dublin, N.H. 0444)

New Wilmington Livestock

N. Wilmington, Pa.

Monday, September 24

Report supplied by PDA

CATTLE 355: Compared with last Monday's market, slaughter cows steady. Couple Choice slaughter steers 61.25 & 63.75, Good 54.25-59.50, Standard 45.00-53.50, few Utility 42.00-45.00. One Choice slaughter heifer at 58.00, few Good 51.00-54.00, Standard 41.50-50.00, Utility 37.00-42.00. Breaking Utility & Commercial slaughter cows 38.00-42.00, few to 43.75, Cutter & Boning Utility 35.00-39.50, Canner & Low Cutter 28.00-35.50, Shells down to 17.50. Few Yield Grade #1 1300-1970 lbs. slaughter bulls 42.75-47.00, few #2 975-1525 lbs. 40.25-43.00.

FEEDER CATTLE: Medium Frame #1 300-500 lbs. steers 48.00-61.00, 500-815 lbs. 45.00-50.25. Medium Frame #1 350-600 lbs. heifers 38.00-50.00, Medium & Large Frame #2 500-700 lbs. 32.00-38.00. Medium Frame #2 400-770 lbs. bulls 34.50-42.75.

CALVES 258: Vealers fully \$10 higher. Few Choice vealers 80.00-85.00, few Good 60.00-70.00, Standard and Good 90-120 lbs. 55.00-61.00, 65-85 lbs. 45.00-56.00, Utility 50-115 lbs. 25.00-35.00.

FARM CALVES: Holstein Bulls 95-140 lbs. 79.00-92.00, Hol. Heifers

90-135 lbs. 59.00-80.00; Beef cross bulls and heifers 80-110 lbs. 55.00-77.50.

HOGS 454: Barrows and gilts mostly 1.00 lower. US No. 1-2 215-250 lbs. barrows and gilts 46.25-47.00, couple small lots 47.25-47.50, No. 1-3 200-260 lbs. 45.25-46.25, No. 2-3 215-285 lbs. 42.75-44.85, No. 1-3 140-195 lbs. 39.50-44.00. Sows 2.00-4.00 lower. US No. 1-3 280-570 lbs. sows 33.00-42.00, No. 2-3 400-580 lbs. 30.00-33.00. Boars 29.50-35.50.

FEEDER PIGS 24: One Lot US No. 1-3 30 lbs. feeder pigs at 17.00 per head, 35 lbs. at 26.00 per head.

SHEEP 194: High Choice & Prime 70-120 lbs. spring slaughter lambs 59.00-66.00, Choice 60-85 lbs. 45.00-56.00, one lot 100 lbs. buck lambs at 41.00, Good 50-85 lbs. 25.00-45.00, one lot 95 lbs. buck lambs at 20.00 per head. Slaughter ewes 3.00-13.00.

Central U.S. Carlot

Pork Report

Wednesday, September 26

Report supplied by USDA

Compared to Tuesday's 4:00 p.m. report: Fresh Pork Loins 14-17 lbs. steady to \$3.00 lower, no sales reported on other weights. Picnics 4-8 lbs. steady to firm. Boston Butts weak. Skinned hams \$1.00-3.00 higher. Sols Bellies fresh and frozen 20-25 lbs. steady. Trade slow to moderate for light to

moderate demand and offerings. Sales reported on 55 loads of fresh pork cuts & 4 loads of trimmings and boneless processing pork.

U.S. No. 1&2 165 lb. Pork carcass cutout value declined \$.34-46 per cwt.

Fresh Pork Cuts

LOINS (Regular): 14-17 lbs. 85.00-90.00, 1.00-3.00 lower; 14-17 lbs. 94.00 ship next Thursday.

LOINS (Retail Trim): 14-17 lbs. 103.00 short cut, steady.

PICNICS: 4-8 lbs. 43.50-45.00, mostly 45.00 steady-firm/Monday

BOSTON BUTTS: 4-8 lbs. 63.00-64.50, weak; 4-8 lbs. 67.00

T.I.S./Frozen, no comparison

SPARERIBS: 3.5&down lbs. 104.00-105.00, no comparison; 3.5-5.5 lbs. 85.00, no comparison.

HAMS (Skinned): 17-20 lbs. 75.00, 3.00 higher; 17-20 lbs. 76.50

T.I.S./Frozen, no comparison; 20-26 lbs. 72.50-74.00, bulk 73.00, 1.00-3.00 higher.

BELLIES - (Sdls - Skin On): 20-25 lbs. 44.00, steady.

BELLIES - FROZEN (Sdls - Skin On): 14-16 lbs. 58.00, no comparison; 16-18 lbs. 52.50, no comparison; 20-25 lbs. 45.00

T.I.S./Frozen, steady.

Pork Trimmings

Boneless Processing Pork

(Chemical Lean)

72% Lean Trimmings Fresh 64.00, no comparison.

Bonless Picnics Fresh 66.00, no comparison.

Jowls, Frozen 29.00-31.00.

Penns Valley Livestock

Centre Hall, Pa.

Tuesday, September 25

Report supplied by auction

Beef Cows: Utility and Commercial 40.85-45.85; Cutters 37.50-40.00; Canners 34.25-36.85; Shells 29.00.

Heifers: Good 54.50-57.75; Standard 51.25-53.00; Commercial 42.75-47.50.

Steers: Choice 59.75-61.50; Good 55.00-58.50; Standard 45.00-52.00.

Bulls: Good 48.10-50.50; Standard 44.75-47.50.

Feeder Cattle: 300-500 lbs. large frame 48.00-56.00; 300-500 lbs. small frame 44.00-52.00; 500-700 lbs. large frame 44.00-53.00.

Veal Calves: Good 58.00-69.00; Standard 47.00-58.00; Utility 38.00-46.00.

Farm Calves: Bulls 65.00-84.00; Heifers 55.00-65.00.

Hogs: 45.25-46.75.

Sows: 39.00-42.50.

Boars: 29.75-31.75.

Shoats: 25-30 lbs. per head 14.00-19.50; 30-35 lbs. per head 21.00-28.00; 35-50 lbs. per head 26.00-33.00.

Lambs: 54.00-60.00.

Goats per head: 10.00-31.00.

Greencastle Livestock Market

Greencastle, Pa.

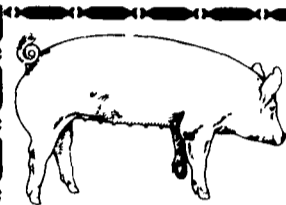
Monday, September 24

CATTLE 392: Butcher Steers, Medium-Good 48.00-61.50; Butcher Heifers - Choice 58.00-61.25, Medium-Good 44.00-59.00; Butcher Cows - Utility-Good 38.00-43.50, Canners and Cutters 34.00-40.50, Shells 34.00 and down; Butcher Bulls, Medium-Good 43.00-51.00; Stock Steers - Medium-Good up to 63.00; Stock Heifers - Medium-Good up to 50.00.

CALVES 362: Medium-Good Calves - 160-220 lbs. 55.00-77.00, 125-160 lbs. 50.00-65.00, 100-120 lbs. 48.00-60.00, 80-100 lbs. 45.00-55.00; Holstein Bull Calves up to 100.00; Holstein Heifer Calves up to 70.00; Light and Green Calves down to 35.00.

SHEEP AND LAMBS 19: Medium-Good Lambs 50.00-59.00.

HOGS 164: Good-Choice Butcher Hogs 190-225 lbs. 42.00-46.75; 225-250 lbs. 46.00-47.00; Good-Choice Butcher Sows 400 lbs., down up to 47.00, 400 lbs. up, up to 45.00; Heavy Boars up to 32.00; Pigs - Per Head 15.00-40.50.



EMERY'S BUYING STATION

OPEN TO RECEIVE YOUR MARKET HOGS

**AT THE GREEN DRAGON MARKET
RD 4, EPHRATA, PA 17522
1 MILE NORTH OF EPHRATA
ON NORTH STATE STREET.**

**HOURS: MONDAY, TUESDAY, and
WEDNESDAY 6:00 A.M. to 11:30 A.M.
215-458-5677 Residence
717-733-9648 Office**

YOU ARE PAID FOR YOUR HOGS IMMEDIATELY

Ken & Lois Emery, Proprietors

FRIDAY, OCTOBER 26 ON THE FARM MONTHLY BRED GILT SALE

Sale to Start Promptly at 1:00 P.M.
Every 4 Weeks

Located 18 miles south of Lancaster, Pa., 6 miles south of Quarryville, take Rt. 272 to Little Britain, turn north, follow Little Britain Road to Jackson Road, right 2nd farm, OR take Rt 222, out of Quarryville to Cedar Hill Road to Little Britain Road to Jackson Road, left Watch for sale arrows.

50 to 60 Head
Now selling our new hybrid gilts representing mostly York & Hampshire & Landrace cross. Bred for easier & Less trouble over farrowing and better weight gains.


**Validated Brucellosis Free Herd #169
Qualified Pseudorabies Free Herd #55**

Hand mated with Breeding Dates

Local Trucker Available
No Hogs Sold On Commission

CHRIST A. BEILER
R.D. 2, Quarryville, Pa
JOHN B. STOLTZFUS
R.D. 1, Kirkwood, Pa

Abe Diffenbach, Auctioneer AU225L
NEXT SALE DATE NOVEMBER 30



GWALTNEY of SMITHFIELD, LTD.

We will receive your market hogs

Mondays, Wednesdays, Thursdays & Fridays


**NOTE OUR WINTER HOURS
7 A.M. to 1 P.M.**

Located at the Vintage Sales Stables, Paradise, PA

You will be paid immediately.

No commission or yard fees deducted.
Reduced waiting time.
Premium prices are paid for extra fancy hogs.

For Information Call
**Ed Herrmann or Charlie Kauffman
717-442-4742**




ATTENTION FARMERS

**EVERY MONDAY
HATFIELD PACKING CO. and
MOYER PACKING CO.
Will Receive Your Hogs and Cattle at the
DANVILLE LIVESTOCK MARKET
RD 4, Danville, PA**

- We will receive your hogs from 8 AM to 12 Noon every Monday Your hogs will be weighed and paid for immediately
- We will also accept your sows & boars
- Your cattle will be received from 12 30 to 5 P M We will either pay you for your cattle immediately or you may sell them dressed weight
- There will not be a commission or yardage fee deducted from your check
- You may call our office Monday morning and we will be able to tell you the base price for hogs for the day

**MELVIN M. LEHMAN - Owner
Danville Buying Station
Phone: 717-275-2880**



Kleen Leen Hog Seed

Those aggressive Checker™ Boars and healthy Checker™ Gilts are as close at hand as we are. No one offers more to your entire hog operation: Kleen Leen's guaranteed breeders. An unmatched health program. Plus the most progressive way to judge boars today... "Genetic Potential Rating."

Stop by soon. Remember, we've got more in store for you than just our great feeds.

SEE YOUR PURINA DEALER TODAY

KEYSTONE MILLS
John B Kurtz
PHONE 717 354 4616 717 738 1088
RD3 EPHRATA PA 17522

HESS MILLS
PHONE 717 442 4183
717 768 3301
PARADISE PA 17562

K & K FEED, INC.
PHONE 717 866 2324
23 N PARK ST RICHLAND PA 17087

WEST WILLOW FARMERS ASSN., INC.
PHONE 717 464 3386
WEST WILLOW PA 17538

WOODSTOWN ICE & COAL CO.
PHONE 609 769 0069
WOODSTOWN N J 08098

No One Offers More