

PFA testifies in support of Pa. Bottle Bill

HARRISBURG — A farm leader told members of the state's House Consumer Affairs Committee Meeting last week that Pennsylvania farmers suffer millions of dollars worth of equipment damages and livestock losses each year due to littered bottles and cans.

D. Eugene Gayman, a Franklin County dairyman and vice president of the Pennsylvania Farmers' Association (PFA), urged the committee to report out legislation which would place a

mandatory refundable deposit on all beverage containers sold in the Commonwealth.

"Every spring and numerous other times during the growing season, we must parade our fields to search for and pick up the constant stream of littered bottles and cans," Gayman told the committee, "But despite our efforts, these littered bottles and cans continue to plague our farming operations."

House Bill 1341 would place a five cent deposit on metal, glass or

plastic containers of one-gallon size or less.

Gayman explained, "The consumed glass and metal act as vehicles of destruction, piercing the walls of the animal's digestive tract and causing extensive internal damage and, in many cases, death to the animal." Gayman said PFA has received numerous reports from its members about losses of equipment and death of farm animals due to littered bottles and cans.

He cited testimony from farm

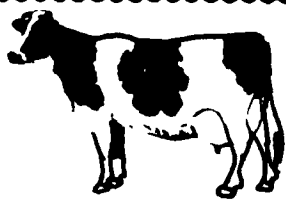
organizations in other states on the impact of their deposit laws. Michigan Farm Bureau, he said, reports an, "...incomparable difference in the amount of littered bottles and cans. Before passage of the law, Michigan's roadsides and farm fields shimmered in the springtime from littered bottles and cans. Today, you will rarely see a deposited beverage container on a Michigan rural roadside."

Gayman also cited a report by the Cedar Rapids Gazette stating that even critics of Iowa's five-year-old container deposit law have conceded that roadside litter has been significantly reduced. "It further noted that over 95% of bottles and cans required to be deposited are returned," Gayman said.

On the other hand, Gayman said, PFA believes legislative proposals to raise taxes for recycling and education programs would not be as effective as enacting container deposits. "Ohio's four-year-old litter tax law is a prime example,"

Gayman told the committee, "in showing such a legislative scheme does not work in reducing the litter problem." A statewide farm organization there, Gayman said, reported Ohio's law has not reduced the amount of roadside litter or the damage suffered by farmers. "Farmers have recognized the ineffectiveness of Ohio's litter tax law by their adoption of policy at the recent Ohio Farm Bureau annual meeting which calls for the enactment of mandatory beverage container deposit legislation," Gayman said.

He concluded, "The time is ripe for passage of legislation to place mandatory deposits on beverage containers in Pennsylvania. The legislature can no longer afford to turn its back on the existing problem of littering in our state, nor can it ignore a legislative program which has proven itself effective in greatly reducing the amount of litter and the damages and costs litter imposes upon farmers and citizens of..."



DAIRY SALE CONSIGNMENTS

For

WEDNESDAY, OCTOBER 3rd, 1984

To Be Held At

New Holland Sales Stables, Inc.

12 Miles East of Lancaster, Pa. Just off Rt. 23, New Holland, Pa.

HERD OF 40 HEAD HOLSTEIN COWS

8 PUREBREDS

12 FRESH LOST 6 WEEKS

20 DUE OCTOBER & NOVEMBER

Consigned by

GLENN & DAVID FITE

For Additional Consignments See Page D45

SELECT CONSIGNMENT AUCTION

Sale will be held at the Gordon Wood Farm located at the junction of Rt. and 660 by Y-Drive In Theater. 6 miles from Mansfield & 4 miles from Wellsboro, Pa.

SATURDAY, OCTOBER 6, 1984

At 12:00 Sharp

102 Registered & Hi-Grade Holsteins 102

Laurel Park - Calves to breeding age, hfrs., from top sires. 54 head Reg. Holsteins, Sires represented Columbus 6; Wileeda Citation R-4; 1st Million 3; Astro Matt 3; Danny Boy - 3; Persuader 3; Milk Master 2; Chairman 1; Elevation Mars; CAR Dairyman 1 and others.

SAMPLE SELLING: JIM MATTOCKS HERD

A Nov. 83 Jason dau., from a VG 89 Bootmaker dam with +606M +20F index under contract with a major stud. Dam has 5 cons. records over 20,000m & 700f up to 25,170m 3.6 901F and Lft. to date of 128,180m 4618f. Gr. dam is VG-85 w/21,360m 3.8 822 and close to 100,000.

A Dec. 83 Columbus from an Ex Marquis Roland w/17,020m & 607f. Grdam was VG 88 w/17,370m & 663f and a lft of over 42,000m & 5125f.

A Mar. 83 Elev. Mars dam is VG87 w/15,070m 4.5 672f. Grdam VG 86 w/15,200 4.3 657f

A Mar. 83 1st Million from a GP 82 dam w/18,840m 4.1 778f and lft. of 117,320 m & 4602f. Grdam GP 82 w/20,210m 3.8 759f and lft. of 121,390m & 4964f.

GORDON WOOD HERD: 15 Cows Sell 11 Reg. 4 Hi-Grades

A VG-86 2 yrs. Royal-Red selling just fresh milking over 70, 2nd calf. Out of one of our best cow families that goes back to an Ex Lakefield grdam from Ben Jackson who has 3 Ex grdau. all from different daus. One of these is our EX-91 Apache Res. - Gr. at 2 shows this year.

A real nice grade Kit Builder fresh in Aug. milking 90 lbs. at 5-6 365 19,000m 3.5 665f Dam had 7-9 306d 23,113m 3.9 908F

A GP 80 A Citation Sov. w/6-1 349d 23,056m 3.3 756f. Dam GP 84 by Crocker w/4-7 365d 32,862m 870f 3rd grdam. 2E-93 by Fury and production winner at Central Nat. w/5-5 365d 27,429m & 832F over 100,000. 3rd dam (VG-87) by Astro w/120,245 m & 4,939f. 4th dam (2E-90) w/lft. 161,311m 5,458f. 5th D. (GP 84) lft 178,188m 6,058f. Silk w/her GP dau by a Starlite son w/2 yr. 365d 15,762m 3.7 579f just fresh milking 70 lbs. 4.0.

JOHN WHELLER JR. HERD: 17 Reg. Holstein Hfrs.

A Jan. 83 Spirit due in Jan. to Jason. Dam GP 82 Apache w/16,187m 4.4 711f grdam. GP 80.

A Feb. 83 Pices Kirk dau. from Dumbelle breeding. Dam VG87 w/19,463m 4.2 825F grdam. VG 85, 3rd dam VG 89.

A May 83 Spirit dam VG85, grdam. GP 83 from Lants.

A Dec. Jet Stream from VG-86 BB Lad w/22,447M 3.5 788f, grdam. GP82.

Frank Vanderlinder herd — 10 Hi Testing Grades Sell

A Whittier Farm Alitude 3.2 316d 16,969m 4.8 809f.

A Jet Stream w/4 rec. over 15,609m 640f.

A Rebel Elevation - 4.0 156d 9599m 3.3 321f est. 17,082m 597f milking 72.0 3.5

6 OTHER COWS FROM A LOCAL HERD

Sales Mgr. Note.

We have cows and hfrs. in this sale purebreds & grades that could be foundation stock, Don't miss this opportunity for top quality replacements.

TERMS: Cash or Good Check.

Sale Under Cover - Catalogs - Lunch Available

Sales Mgr. - Gordon Wood

Mansfield, Pa. Phone 717-549-4901

Pedigrees - Ron Wood

For the most in advertising coverage and preparing your sale, Call Wood's Auction Service.

ERM coordinator listed

UNIVERSITY PARK — Herschel A. Elliott has been named program and student services coordinator for the environmental resource management program at Penn State. He also holds the rank of associate professor in the Department of Agricultural Engineering.

ERM is a 4-year major in the College of Agriculture for students interested in an interdisciplinary approach to problem solving applied to environmental issues.

In addition to coordinating the program, Elliott will teach, advise students and organize seminars. He also plans to conduct research in water quality and waste

management.

A graduate of the University of Tennessee, Elliott earned a bachelor of science degree in chemical engineering. He holds a master's degree in civil engineering and a Ph.D in applied science, both from the University of Delaware.

Before joining the Penn State faculty, Elliott was an associate professor of agricultural waste management at the University of Delaware. He is a member of Tau Beta Pi, the American Society of Agricultural Engineers, the American Society of Agronomy and the Soil Science Society of America.

ANNUAL SAWDUST DAYS

Fri., Sat., & Mon., October 5, 6, & 8

LIMEVILLE SALES & SERVICE

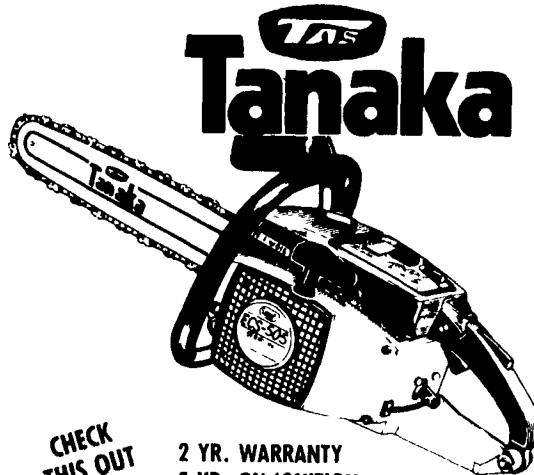
SPECIALS ON OILS, CHAIN FILES AND SAWS

BAR OIL Reg 4 50 **3.50** gal.
MIX OIL, 6 pk. Reg 4 75 **3.25** 6 pk.
FILES Reg 1 89 **89¢**

FREE REFRESHMENTS

CHAINS BUY 1 GET 2nd AT ONLY 99¢ Stock Up Now

WE CAN FIT ALMOST ANY SAW, JUST BRING OLD CHAIN FOR PERFECT FIT.

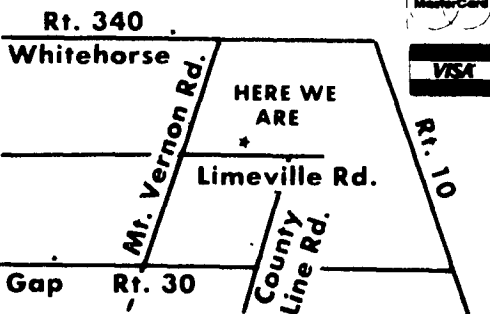


CHECK THIS OUT

2 YR. WARRANTY
5 YR. ON IGNITION

ALL SAWS WITH CHAIN BRAKE WHEN YOU BUY A TANAKA
YOU DON'T GET 80% OF THE SAW YOU WANT —
YOU GET IT ALL - AT NO EXTRA COST.

NOT RESPONSIBLE FOR TYPOGRAPHICAL ERRORS



Model 350 14" Cut
Reg \$244 95
SAVE \$55
NOW \$189⁹⁵

Model 506 20" Cut
Reg \$359 95
SAVE \$60
NOW \$299⁹⁵

DEMONSTRATIONS ALL DAY

REGISTER FOR FREE DOOR PRIZES

- 5 lb. Fire Extinguisher
- 15 ft. Log Chain
- File Guide
- 5 FREE Chain Sharpenings

LIMEVILLE SALES & SERVICE

LOCATED ON LIMEVILLE RD.,

3 MI. E. OF GAP &

3 MI. S. OF WHITEHORSE

Fri 7-7; Sat. 7-4; Mon. 7-7

442-9304