

Public Auction Register

Closing Date - Monday, 5 00 P M
of each week's publication

FRI, OCT 26 - 10 AM
Public Auction of 174
Acre Farm, Farm Equip-
ment, Butcher Equip-
ment, Tools, Guns &
Household Goods
Located off Rt 895 bet-
ween Summit Station and
Pine Grove Travel 1/2 mile
south to the Rock Hotel on
Mt Road to sale site,
Schuylkill Co, PA Floyd
F Fox, Owner Dennis F
Wagner & Tom Maiden
ford, Auctioneers

SATURDAY OCTOBER 27
Public Auction of 119
Acre Farm and im-
provements Located in
Narvon, Rt 2, Salisbury
Twp, Lanc Co, PA Ver-
na E Martin, Owner Paul
E Martin & John Stauffer,
Auctioneers

SATURDAY OCTOBER
27 - 8 30 AM Public Auc-
tion of the 12th Annual
Red Caboose RR Con-
signment Sale Sale of
RR Antiques and Trains

Ronald D Funk, Auc-
tioneers 717 687-6646

SAT OCT 27 Public
Auction of Real Estate and
Personal Property located
505 W Orange, Lititz, PA
Sale by Anna B Keller
E M Murry Associates,
Auctioneers

SAT, OCT 27 1 PM
Public Auction of Valuable
Real Estate Located 12
miles south of Strasburg,
3 1/2 miles south of Nine
Points 1/2 mile east of Rt
896 along Windy Top Rd
36081, Sadsbury Twp,
Lanc Co, PA John B &
Lydia S Stoltzfus,
Owners Diffenbach's
Auctioneers

SAT, OCT 27 2 PM
Public Auction of 120 acre
dairy farm located
Salisbury Township,
Lanc Co, PA Take Rt
322 East of Blue Ball 4
miles to Narvon Rd (in
Beartown), turn south on

Narvon Rd 1 mile to Red
Hill Rd Turn left 8/10 mile
to Mast Road, turn left, go
1/2 mile to Evans Rd turn
right, go 1/2 mile to farm on
right Auction by Mrs Ver-
na E Martin Paul E Mar-
tin, Auctioneer

MON OCT 29 - 2 PM
Lamar W & Eileen S Gar-
man 128 acre dairy farm
Located 1 mi north of
Blainsport along Route
897, West Cocalico Twp
Lanc County, PA Auction
conducted by Paul E Mar-
tin & John D Stauffer

MON, OCT 29 - 11 PM
San Bo Holsteins Reg
Milking & 1984 Calf Herd
Dispersal selling 75 cows
& 20 calves Location
Farm at RD 6 Lebanon,
Bethel Twp, Lebanon Co
PA From US Rt 22 & 178
split east of
Fredericksburg turn right
off Rt 22 onto Mt Zion
Rd and continue south
through Hamlin to farm
on right or from Rt 72 in
Lebanon turn right onto
Maple St at NW Element-
ary School and continue
to Mt Zion Rd to farm on
left past Mt Zion approx
2 miles West of

Myerstown off Rt 422
turn north at McLean's
Trucking onto Narrows
Dr to Mt Zion Rd to
farm Robert R Lentz &
Family, Owners Harry H
Bachman, Auctioneer

TUESDAY OCTOBER 30
7 PM Public Sale of
Feeder Cattle and Feeder
Pigs at Carlisle Livestock
Market exit 12 181,
717-249-4511

NOVEMBER
FRIDAY NOVEMBER 2 -
Monthly Cow Sale at Mel
Kolb, Inc Lancaster
Farm, 2220 Dairy Road,
Lancaster, PA

Dairy and Livestock Sales

FRIDAY NOVEMBER 2 - 6
PM Public Auction of a
Special Heifer Sale Sell-
ing 250 - 300 Heifers
Some registered, Open,
Bred and Springing
Heifers Located at the
Belleville Livestock
Market, Belleville, PA
Mark Glick, Auctioneer

FRIDAY NOVEMBER 2 -
5 30 PM Gap Auction An-
tiques and Household
Goods sold at every auc-
tion Located off Rt 41

Lancaster Turkey Hill
Mint Market, cross RR
bridge, Ira Stoltzfus &
Son, Auctioneers

FRANKLIN- CUMBERLAND COUNTY HOLSTEIN SALE

At Shippensburg, Pa. Fairgrounds, off
Fayette St., leave Rte. 81 at Fayette St.
Exit, go north to Fayette St. follow signs
on

TUESDAY EVE., OCT. 2, 1984

Sale at 7:00 P.M.

**40 REGISTERED HOLSTEINS-
PLUS CALVES**

**CERTIFIED-ACCREDITED-
MOST ARE VACC.. CHARTS
FURNISHED**

Offering consists of mostly young cows, first
calf and bred heifers, open heifers and heifer
calves and are consigned from some of top
herds. Most are sired artificially and are on
D.H.I.A. or from dams with records. Animals
selling inc. Topper dtr., fresh with 2 yr. rec.
17,422 M., 620 T.; Fond Reliance dtr., fresh,
15,920 M., 578 F., Elevation dtr., fresh, VG 86,
records over 16,000 M. 600 F.; Astronaut dtr.,
fresh, 287 day record 17,168 M. 4.0, 685 F.;
Milestone dtr., 2 yr. rec. 14,245 M 654 F.;
Fultonway Transformer dtr., fresh, 2 yr. rec.
15,545 M., 579 F.; Gay Duke dtr., fresh, 2 yr.
rec. 18,850 M. 649 F.; Lot of first calf heifers
from dams with records, many over 20,000 M.;
Sires inc. Sexation; Citation Mark A; Seely
Ivan Lad; Mandate; Arlinda Fond Master,
Calypso; Char-Sam Elevation Pabst;
Elevation Tony; Pursuader; Marvex; Keho
Eric; Kinglea M and M; Elevation; Arnold
Acres Chief; Quality Ultimate; Topper and
many other well known sires. If you are looking
for good producing animals or heifers from
high producing dams, don't miss this Sale. Sale
in Tent. For catalog write Ralph W. Horst, Sale
Manager, Marion, Pa. 17235.

Terms: Cash or Good Check

**FRANKLIN-CUMBERLAND CO.
HOLSTEIN BREEDERS**

Auctioneer,
Ralph W. Horst, Lic. No. AU-000437-L
V. Art Kling, Pedigrees
Sale Chairmen,
Robert Eckstine and Ed Showaker,
Lunch At Sale

DAIRY SALE FRIDAY, OCT. 12, 1984

7:00 P.M.

Selling at Kling's Sale Barn, located on
Pa. Rt. 74, 2 1/2 miles N.E. of Landisburg,
Perry Co., Pa., 15 miles North of Carlisle,
Pa.

**"Complete Milking Herd Dispersal
of Lewis Curley,
Mifflintown, R.D. 2, Pa."
40 HEAD HOLSTEIN
DAIRY COWS**

Approx. 1/2 are Registered - DHIA Records to
20,000m. Several Cows are milking right at 80
lbs./day.

This is a Fall Freshening Herd with 8 due in
September & October, 12 to freshen later this
fall.

Cattle are bred to ABS and Sire Power Bulls.

This is a good young herd sired by such popular
sires as Glen Valley Star, Jemini, Betty Chief,
Pacemaker, Oak Green Virginian and many
more.

Preg. Checked * DHIA Records

* Catalogs Day of Sale

Also selling for Larry Brajkovich
Shermans Dale, PA

Complete Milking Herd Dispersal 23 mature
Holsteins, several springing, 5 fresh recently,
balance in different stages of lactation. Plus 6
nice young Jersey cows w/milk records from
Somerset County.

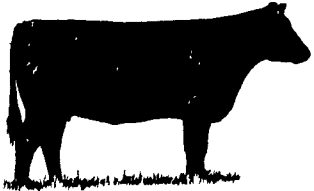
Also selling 20 Good, young fresh cows and
first-calf heifers of which 10 are registered -
Will suit the most critical dairyman. Several
Local Consignments.

Sale Managed By:

V. ART KLING

R.D. 1, Landisburg, Pa.
717 789-3883

CONSIGN OR BUY



STATE GRADED FEEDER CATTLE SALE FRIDAY, OCT. 12, 1984 6:00 P.M.

Keister's Middleburg Auction Sales, Inc. Rt. 522, 3 miles East
of Middleburg, 5 Miles west of Selinsgrove.

For information call: 717-837-2222 or 717-524-5285 or 717-966-
2856 or 717-922-1490.

Cattle must arrive at sale barn between 6 a.m. & 12 noon.

Feeder cattle will be graded by U.S.D.A. grading standards by certified
personnel from PA Dept. of Agriculture.

Terms: Cash.

KEISTER'S MIDDLEBURG AUCTION SALES, INC.

Rt. 522 R.D. 3
Middleburg, PA

Owners,

DON & WALT KEISTER

Ray Long and Dave Imes, Auctioneers

Restaurant Open

WESTERN PA. SALE OF STARS - BUTLER, PA.

★ ★ ★ 50 Head of Top Quality Holsteins To Sell ★ ★ ★

Oct 10 At 12 Noon At The Butler Farm Show Grounds-Rt. 68 South

A Mollychief daug. due in Nov. Dam has
over 19,000 M 700 F, James
Compton, Clarksburg, Pa.

A G+81 3 yr. old Dam has over 22,000
M 822 F. Hinch-Smith Farm, Butler,
Pa.

A Ideal Superior daug. Dam has over
20,000 M 835 F. Tim Sturgeon,
Tombell, Pa.

A Wagnercrest Ivanhoe Astronaut
daug. Dam 86 pt. with over 26,000 M
987 F Kuehn Bros. Monroeville, Pa.

A Tel-Star daug. Due Sale Time Dam
17,576 M 40% 707 F. Millervale
Farm, McDonald, Pa.

An 82 Pt. Elevation daug. with 18,912
M 595 F Dam 86 Pt. with over
24,000 M 742 F. Kenneth Morgan,
Bridgeville, Pa.

A Topper daug. with Dam at 85 Pts.
over 24,000 M 733 F. Due Sept. 6 to
Con Vel Enchantment. Also a Tiho Kit
Builder daug. due sale time to Tony.
Norman Graham Connoquenessing,
Pa.

A Very daug. 2 yr. old Dam has over
17,000 M 589 F. Bred to a Valiant
Son. Due in Jan. Alice & David
Sefton, Saxonburg, Pa.

A 4 yr. old Dodge View Gem daug. Dam
G+83 John & Dorothy Englet,
Cochranton, Pa.

A Top Chief daug. out of a Elevation
Pete dam with over 19,000 M 696 F.
Due in Dec. to Astro Matt. Wade
Cooper, Slippery Rock, Pa.

A Citation M daug. out of a Linkpin dam
with over 24,000 M 1091 F. Timothy
& Brenda Miller, Mayfort, Pa.

A Commissioner. daug. due Sept. 9 to
Columbus. Eleanor Stokes Karpa,
Avela, Pa.

A VG 85 Educator daug. with 17,699 M
603 F. Due Oct. 11 to Magnet. Albert
Hogg Slippery Rock, Pa.

A Triple Threat daug. milked over
14,000 M 620 F. as a 2 yr. old G+81.
Rynd Home Farm, Cochranton, Pa.

A Model Intensifer daug. VG 86 with
18,743 M 4.3% 801 F out of a 86 Pt.
dam with over 25,000 M 920 F.
Morgan Glo Farm, Bridgeville, Pa.

An Astronaut daug. with record as a 2
yr. 14,633 M 490 F. Inc. Due Sale
time. Dam has over 18,000 M 600 F.
Jeffrey Sally, Enon Valley, Pa.

A Gay Traveler daug. out of a 85 Pt.
dam with over 22,000 M 827 F. Bred
to Tony. Ellen Dale Farms, Mc-
Donald, Pa.

A Triple Threat daug. GP84 as a 2 yr.
old 15,727 M 3.9% 612 F. Dam EX
902E with over 19,000 M 677 F. Due
in Nov. to Arlinda CAR Dairyman.
Robert Morrell, Cochranton, Pa.

A 2 yr. old Elevation Lester daug. out of
a Astronaut daug. with 23,817 M
3.7% 874 F. Kuehn Bros.
Monroeville, Pa.

An Elevation Brutus daug. Dam has
over 16,000 M 732 F. Due in Dec.
David & Barbara Miller, Greensburg,
Pa.

A 2 yr. Brookfield Falcon daug. due mid-
Oct. to Pete. 3 gen. VG dams with
16,440 M 4.3% 706 F. Laszio Moses,
Greenville, Pa.

This is a Partial Listing

Sale Chairman
Leroy Hogg 412-794-8246

Selector
Wade Cooper 412-794-5123

Pedigree
Roy Simpson 412-287-6025

Auctioneer
Sherman Allen 814-382-2922