

PUBLIC AUCTION SATURDAY, OCTOBER 6, 1984

At 9:30 A.M.

Located in Snyder co., 4 miles East of New Berlin, Pa., on route 304, 1 mile East of Cheesemaker on County Line Road.

4 Head horses, 23 head holsteins, dairy equipment, 700 bu. oats, 18 acres standing corn, Geiser saw mill, a good line horse drawn machinery and some household.

SAM J. YODER
R.D. #1
Winfield, Pa.

Mark Glick - Auctioneer
AU-349-L

Public Auction Register

Closing Date - Monday, 5 00 P M
of each week's publication



FEEDER CATTLE SALES

- Clean Local Cattle
- Super clean yards
- Weighed on Arrival
- Quick settlement
- Quick Unloading
- Quick Loading out
- No Shipped cattle

QUALITY REPUTATION!

We have the experience and we work hard for you!!

Cattle are sold in the order received.

"Special" Sale Dates:
Oct. 3rd, 17th, 31st
Nov. 14th

7 PM at
FOUR STATES LIVESTOCK SALES

For information or for FREE advertising call
(301) 733-8120
in Hagerstown since 1935

SAT, OCT 20 - 11 AM
Public Auction of a Complete Jersey Herd Dispersal Located at Sunny Meadows Farm off Rt. 143 between Lenhartsville and Virginville along Strausser Rd., Berks Co., PA. Jacob G. & Marion S. Leiby, Owners. Dennis F. Wagner, Auctioneer.

SAT, OCT. 20 - 9:30 AM
Public Auction of Household Goods, Gun, Real Estate, Antiques and Collectibles. Located 1 1/4 miles east of Troxelville on L. Rt. 54029 in Adams Twp., Snyder Co., PA. Harry J. Romig, Owner. Jay E. Lauver & Steven D. Wagner, Auctioneers.

SAT, OCT 20 - 10 AM
Public Auction of Farm machinery, tools,

household goods. Directions. Rt. 272 North from Ephrata to Schoeneck Rd. (at Rocky Ridge Auto Sales), turn left, go straight through Schoeneck toward Cocalico. Leaving Schoeneck, take second road left, Furnace Hill Rd., go approx. 1 mile to farm on right. West Cocalico Township, Lanc. Co., PA. Auction. By Elmer B. & Esther B. Kurtz Paul E. Martin, Auctioneer.

MONDAY OCTOBER 22 - 2 PM Public Auction of 168 Acre Farm. Located in Tulpehocken Twp., Berks Co., 2 miles southeast of Bethel along Wintersville Rd. Elam M. & Mabel H. Burkholder, Owners. Paul E. Martin & John D. Stauffer, Auctioneers.

TUESDAY OCTOBER 23 - 7 PM Public sale of Feeder Cattle and Feeder Pigs at Carlisle Livestock Market exit 12 off I-81, 717-249-4511

WED OCTOBER 24 - 7 30 PM Public Auction of the Round-Up Sale of Yearlings, Heavy Feeders, Calves, Stock Bulls and Stock Cows. Located at The Shenandoah Valley Livestock Sales, Inc., 1044 Edom Rd., Harrisonburg, VA 22801

THURSDAY OCTOBER 25, FRI OCTOBER 26 & SAT OCTOBER 27 - Carriage, Sleigh & Antique Auction at Martins Sales Pavilion, two miles east of Intercourse, PA, on Rt 340 Martin Auctioneers, Inc., P.O. Box 477, Intercourse, PA

FRIDAY OCTOBER 26 - 1 30 PM Public Auction Dairy Sale. Located at the Penns Valley Livestock Auction, Centre Hall, PA. Ron Gilligan, Auctioneer

FRIDAY OCTOBER 26 - 5 30 PM Gap Auction Antiques and Household Goods sold at every auction. Located off Rt 41,

Lancaster Turkey Hill Minit Market, cross RR bridge, Ira Stoltzfus & Son, Auctioneers

SATURDAY OCTOBER 27 - 11 AM Public Auction of Horses. Located at Keister's Middleburg Auction Sales, Inc., Rt. 522, 3 miles east of Middleburg, PA., 5 miles west of Selinsgrove, PA. Don & Walt Keister, Owners. Ray Long & Dave Imes, Auctioneers

SATURDAY OCTOBER 27 - 11 AM Public Auction of Personal Property and Valuable Real Estate 119 Acre farm with never failing stream. Plus 24 acres woodland tract. Located in Millcreek Twp., Lebanon Co., PA. Along the Stricklerstown Rd between Cocalico and Newmantown, PA. Ralph L. Eberly Estate Paul A., Curt W. & Hugh L. Eberly, Administrators. Clayton C. Kleinfelter & Sons, Auctioneers.

MY LADY'S MANOR FARM PRODUCTION SALE

On the farm located 20 miles south of York, Pa. and 20 miles north of Baltimore in Harford Co., Md. Take Exit 36 off I-83 and take Route 439 to Shawsville. Turn right on Route 23, go approx. 2 miles to Old York Road, turn right and the farm is the first one of the left. From I-695 take Exit 27 North onto Dulany Valley Road (Route 146) to Madonna (approx. 20 miles), turn left and go 2 miles to Old York Road. Turn left and the farm is the first one on the left.

WEDNESDAY, OCT. 10, 1984

11:00 A.M.

70 REGISTERED HOLSTEINS 70

Cows Selling average 20,000M-

Dams average 22,000M

12 Very Good and Excellent Cows Sell

15 sell from VG and EX Dams

5 sell from dams with 30,230M to 34,030M

17 sell from dams with 22,080M to 29,360M

7 sell from dams with 1046F to 1167F

17 sell from dams with 813F to 983F

Featuring

LADY'S MANOR RORAE KARLA-EX.

4-1 244 24,220 3.7 902 Inc.

Promising over 1,000F

Sire-Round Oak Rag Apple Elevation-EX96

Selling Choice of This Pair:

VG 88 Jemini daughter

3-11 275 22,040 3.9 850 Inc.

Due November to Pete

Dam GP82 with 34,030M and 1157F

VG 87 Betty Chief daughter

3-5 365 22,360 3.3 733

Dam VG 86 with 34,000M and

1116F

Also Selling:

• VG Harrisburg Gay Ideal dtr
4-5 317 26,030 831
Her dtr by Marshfield Elevation Tony also sells.

• VG Ivanhoe Star dtr. with

3-8 365 22,600 3.7 827

• VG Paclamar Astronaut dtr with

22,390M and 774F as a 3-yr old

• VG 86 Ivanhoe Star dtr with

3-5 303 20,640 738

• VG Marvex dtr bred to Columbus

4-2 365 19,920 3.7 742

Dam EX 92 3E with 813F.

• VG Mark A daughter with 20,370M and 767F as

a 2-yr old

• VG 86 Betty Chief dtr with 3-3 358 18,470 672

Her Pabst dtr bred to Wiseman also sells

• A fresh Valiant dtr Dam GP83 with 28,070M and

994F Gr' dam EX 91 3E with 30,160M and

1140F

• I-O-State Chief Ford dtr. sells fresh. Dam GP83

with 27,690M and 913F. Gr' dam VG 87 with

778F.

• Tamlane dtr sells fresh Dam VG with 23,620M

and 826F. Gr' dam VG with 26,950M and 963F,

next dam EX with 33,170M and 1205F

Auctioneer's Note: My Lady's Manor herd is

noted throughout the country for high

production and type. This production sale is no

exception with the milking age animals selling

averaging over 20,000M and their dams

averaging 22,000M. Plan to be with us for this

quality offering!

Pregnancy Examined-Tested for Interstate

For Catalogs contact:

My Lady's Manor Farm

ROSS E. SMITH, JR. & SONS

4127 Old York Rd.

Monkton, MD 21111

Ph. 301-692-6561

Sale Manager

REMSBURG SALE SERVICE

P.O. Box 177

Jefferson, MD 21755

Ph. 301-473-8214

"SPECIAL"

FEEDER SALE

TUES. OCT. 2
7 P.M. SHARP!

WESTMINSTER

Livestock Auction
Phone 301-848-9820

ATTENTION

The Discovery '84 Sale which was to be held Friday, October 12, at the Lebanon Area Fairgrounds Has Been Cancelled.

The sale was to be presented by the PA Angus Association.

Harry H. Backman, Auctioneer

JERSEY SHORE LIVESTOCK AUCTION

Under New Ownership
New time of Livestock Sale
Thursdays at 4 PM

For Information Call
814-349-8700 or 717-398-0111

Jersey Shore L

P.O. Box 271

RD 2

Jersey Shore, PA

2 miles South of

Jersey Shore Rt. 44



1044 Edom Road
Harrisonburg, Virginia 22801

Telephone: (703) 434-4482 or
(Bill Joseph) (703) 350-2481

Special Fall Sales

49TH ANNUAL CALF SALE

THURS., OCTOBER 4, 1984 TIME: 7:30 P.M.

All Calves Beef Breeds

ROUND-UP SALE

WED., OCTOBER 24, 1984 TIME: 7:30 P.M.

Cattle of All Breeds and Weights
Yearlings, Heavy Feeders, Calves, Stock Bulls & Stock Cows.

ANNUAL HOLSTEIN SALE

WED., OCTOBER 31, 1984 TIME: 7:30 P.M.

Holstein & Dairy Cross Steers

All Weights

ROUND-UP SALE

WED., NOVEMBER 14, 1984 TIME: 7:30 P.M.

Cattle of All Breeds and Weights
Yearlings, Heavy Feeders, Calves, Stock Bulls & Stock Cows.

SATURDAY SALES 1:30 P.M.

Specializing In Feeder Cattle. We Will Have A Good Selection Throughout The Fall. Board Sales And Order Buying On Request.

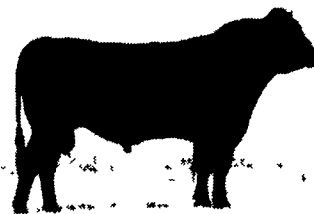
Dr. Burleigh Anderson's Meadow Mist Farms Cow Herd Dispersion

—120 Foundation Females Sell—
The Breed's Greatest Performance Dispersion!

**Wednesday,
October 10, 1984
11 A.M.**

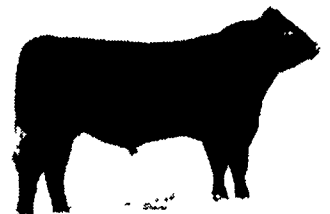
at the Farm, Loysville, Pa.

-Featuring the Service of These Young Performance Giants-



PROGRESSION
36 cows examined safe

| INDIVIDUAL PERFORMANCE DATA | | |
|-----------------------------|--------------|--------------|
| Weaning EBV | Maternal EBV | Yearling EBV |
| 106 | 106 | 108 |



PINE DRIVE BIG SKY
19 cows examined safe

| INDIVIDUAL PERFORMANCE DATA | | |
|-----------------------------|--------------|--------------|
| Weaning EBV | Maternal EBV | Yearling EBV |
| 108 | 104 | 109 |



PREMIER CELEBRATION
33 cows examined safe

| INDIVIDUAL PERFORMANCE DATA | | |
|-----------------------------|--------------|--------------|
| Weaning EBV | Maternal EBV | Yearling EBV |
| 104 | 102 | 101 |

- ★ 21 Daughters of Schearbrook Shoshone
- ★ 20 Daughters of Ankonian Dynamo
- ★ 7 Daughters of PS Power Play
- ★ 9 Daughters of Bon View Winston 1342

- ★ 11 Daughters of Big Moose
- ★ 13 Daughters of Lucan of Wye
- ★ 5 Daughters of Band 174
- ★ 6 Daughters of Meadow Mist Magnum
- ★ 28 Intensely Wye-bred females

The Meadow Mist herd represents 23 years of continuous breeding and selection for the economically important performance traits. The Meadow Mist herd is a model performance breeding program featuring the most complete and comprehensive record keeping program to be found anywhere in the breed. Bulls produced at Meadow Mist Farms have ranked at the very top of the test stations in Pennsylvania, West Virginia, Ohio and Maryland through the past five years and the Meadow Mist prefix has truly become a symbol of Angus performance excellence!

Rapid generation turnover has been the policy at Meadow Mist Farms and more than 50 percent of the females selling are 3 years of age and younger. The entire herd descends from 20 heifers purchased 23 years ago, no outside females have been added since this original purchase. Come to Meadow Mist expecting to see the very best in Angus breeding and management — you will not be disappointed!

Auctioneer: Col. Mike Jones

For your free reference catalog, address

Tom Burke / Dick Beck

—Sale Managers—

AMERICAN ANGUS HALL OF FAME

at the

WORLD ANGUS HEADQUARTERS

Smithville, Mo. 64089

(816) 532-0811

MEADOW MIST FARMS

Dr. Burleigh Anderson

R.D.#2, Box 30

Loysville, Pa. 17047

(717) 789-3121 or 789-3881

The Meadow Mist herd has been certified free of brucellosis and accredited tuberculosis free ever since it was established. Calhoun vaccination against brucellosis is routinely practiced as well as whole herd vaccination against the common infectious diseases in the Northeast. In addition, the entire herd has been tested for bovine leukemia virus for the last several years and has been negative on every test.

