

MAILBOX MARKET

For Sale Ashley wood stove w/sheet metal sides, auto draft control \$100 Lanc Co 717 733-0511

For Sale 40 qt ice cream machine, \$9,500 or trade crawler loader North Co 215 759-0819 eves, 215 863-5522 days

For Sale - MF 65 complete engine overhaul, sauder loader w/dirt pan, \$2,500 Leb Co 717 838-3857

For Sale - Gehl 95 grinder mixer, very good cond, \$2,200 Franklin Co 717 369-3386

For Sale 1975 Dodge power wagon, new brakes, exhaust & battery 717-838-9115 2 cyl Wisc Baylor engine 717 838-1801

For Sale - 400 bu cleaned rye seed, small del extra charge Lanc Co 717-665 4308 eve

For Sale - Gehl 95 grinder mixer, NI 325 corn picker Lanc Co 717 768-8020

Wanted JD pan type bale thrower, hyd preferred, bale wagon, wagon gear For Sale Case corn binder Lanc Co 215 445 5928

For Sale - Ashley C-60 wood stove \$200/best offer Michael R Stoltzfus, RD#2, Narvon, Pa 17555 Lanc Co Cam bridge Rd

Wanted Wheels for 1/4 T pickup, 8 lugs w/lock ring Lanc Co 717-464 2583

\$3,500 Berks Co 215 689-9493

For Sale Clearfield Co 1969 MF 4 wheel drive loader w/forks, good cond Luigie Ballarotto, LaJose Pa 814-672-3616

Wanted Old photos, dolls doll clothes, lace, petticoats, metal toys, valentines, Christmas ornaments, postcards Chester Co 215-696 1314 eves

Wanted - Reg Morgan mare, 3-4 yrs old Lanc Co 215-267-4841

For Sale - Like new ear corn snapper head for NH 770-782 Lanc Co 717 626-8324

For Sale Young Standardbred horses, well broke, Lanc Co 717-627 1598

For Sale 4 service age Duroc boars, asking \$150 Lanc Co 717-354 0289

For Sale - JD 45 combine good \$400 Int CO Case runs good \$600 Berks Co 215-488 7383

For Sale - NI haybine, 9', Ford baler 530, 12" band saw/sander, new, 1/2 HP generator Berks Co 215 286-9425 after 6 p m

For Sale - 3 hp single phase motor, also, cheap Monarch stove 717 653 1568

For Sale Ford 5000 diesel on steel, wide front, high clearance, 67 hp, 215-445 5697 between 6 & 8 a m or p m

For Sale V640 37 hp rebuilt Wisc engine w/clutch or clutch-reduction Benuel Beiler, RD1, New Providence, PA 17560

For Sale - Int 6' snowblower, in perfect working order, \$650 Adams Co 717 334-5540

For Sale - Purebred collie pups, no papers, nicely marked, Elmer B Stoltzfus, 102 N Ronks Rd, Ronks, Pa Lanc Co

Notice - Am interested in feeding heifers Andrew M Stauffer, RD2, Box 757A, Ephrata, Pa 17522

For Sale - Farmall M \$1400, Pr 560 rims \$60, Pr 13x24 tires \$40 York Co 717 428-1036 weekends or after 5 p m

For Sale - JD 12' cultipacker, 18" rolls, York Co 717 757-1144

For Sale 2 ewe lambs, 7 mo \$50 ea, Atari 2600 w/4 cartridges, no pad dles, \$30 Solanco, 717 548 3313

For Sale 2 Angus x Chianina bred heifers, 1 reg Charolais bred heifer, 1980 Honda XR 80, York Co 717 225-4516 eves

For Sale Timothy seed \$20/bu Clover seed \$60/bu York Co 717-862-3833

For Sale Evergreen shrubs & trees w/containers or dug, Spruce, Fir, Pine, Juniper, Firewood cord \$70 Cecil Co 301-378-3531

For Sale - Hobart meat ban saw, exc cond restored cutter sleigh, Bucks Co 215-536-8291 after 4 pm

Wanted - To buy overhead garage door 14' wide x 7' high, also 3' x 16' grain auger 215 326 0156

For Sale - I H 203 combine parts, unloading auger, swingout section, Chaffer extension, v g cond, Gehl forage wagon parts, Bucks Co 215-794-7058

For Sale 2 reg Holstein heifers, sired by Moneymaker & Per suader, bred to Valiant & Tony, 1 VG dam 215 869-3502

For Sale 15,000 gal heavy duty oil tank \$1500 60 hp 3 phase motor \$200/best offer, Chester Co 215-869 2078

For Sale - NI #323 corn picker in exc cond price \$3000 Lycoming Co 717-398-1459

For Sale - Rye, small grain, uncleaned \$4 25 bu Lanc Co 717-653-5709

PUBLIC AUCTION FARM MACHINERY FRIDAY, OCT. 12, 1984 AT 11:00 A.M.

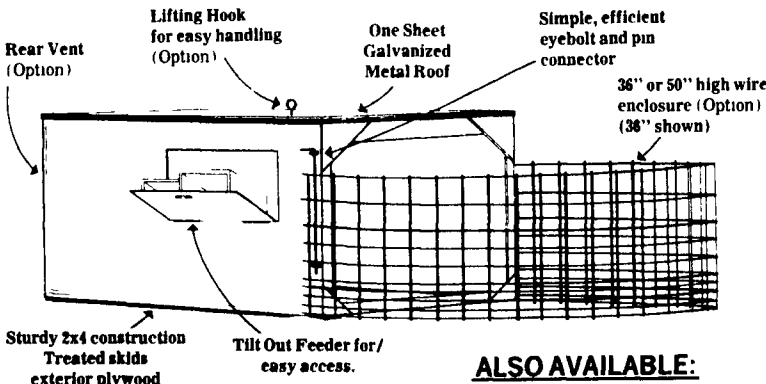
Located in Snyder Co., 1 mile East of Beavertown, Pa., on Route 522, turn North on Covered Bridge Road, 1 mile to farm.

I.H. 856 gas tractor recently overhauled, I.H. no. 710 semi mount 5-16 in. auto. reset plow, Farmall M tractor, hyd. loader for M, Athens 3 pt. 10 tooth chisel plow, I.H. 10 ft. disk, Brillion 12 ft. cultimulcher, Walsh field sprayer, J.D. no. 1440 corn planter w/monitor, N.H. super 717 harvester w/pickup and 2 row corn heads, N.H. no. 27 blower, I.H. no. 51 self unloading wagon w/roof, 2 wagons w/bale racks and hyd. dumps, hay wagon, N.H. no. 280 baler w/thrower Chem Flo sprayer att., N.H. no. 479 haybine, Pequea hay tedder, N.H. 32 ft. and 20 ft. elevators, I.H. flail chopper, N.H. no. 55 rake, N.H. no. 346 manure spreader (needs repairs), N.I. no. 319 2 row mounted corn picker w/6 roll husking bed, snow blower, 65 amp. generator on trailer, 550 gals. gas taqnk w/electric pump, several I.H. tractor weights, 2 hyd. cylinders, 6 calf hutches, and a small amount of wagon items.

Terms: CASH
EDWIN J. YODER
Mark Glick-Auctioneer
Reedsville, Pa.
AU-349-L

LUNCH AT SALE

Compare the Stoltzfus Woodwork Calf Hutch



ALSO AVAILABLE: TRACK FOR FASTENING CALVES' CHAIN TO CEILING OF HUTCH

Lancaster County:
JOHN LANDIS
1801 Colebrook Rd., Lancaster, Pa. 717-898-7689

Lebanon County:
UMBERGER'S MILL
Rt 322, RD#4 Lebanon, Pa 717-867-5161

Perry County:
MELVIN STOLTZFUS
Blain, Pa. 717-536-3554

Berks County:
JOE RUTH
RD #4133 Fleetwood, Pa 19522 215-944-7571

Maryland:
LEROY HILDEBRAN
Woodsboro, Md 301-845-8929

MFD. BY: STOLTZFUS WOODWORK
RD 2, Box 2280, Gap, PA 17527
717-442-8972

Increase Profits with Hess'



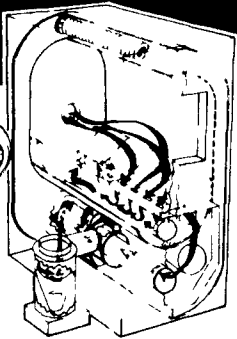
CUSTOM FORMULATED PRE-MIXES FOR LIVESTOCK FEEDS BUILT TO YOUR SPECIFICATIONS

AVAILABLE IN BULK DELIVERY



HESS FARM SUPPLY INC.
R.D. 2,
New Holland, PA 17557
Phone: 717-354-7972

Automatic Cycling WOOD GASIFICATION BOILER



Working Unit On Display

ESHLAND Wood Gun

- Eliminates Creosote Build-up
- Lower Fuel Consumption
- 84% Wood, 85% Oil Efficiency
- Available in sizes from 80,000 to 500,000 BTU/hr with auto. oil backup.

By using dense refractory material, complete combustion occurs at temperatures exceeding 2000°F. No smoke... No creosote build-up!

ALTERNATIVE ENERGY SYSTEMS

Allen Lawver
504 E. Main St., New Holland, PA 17557
PH: 717-354-0412

★ FREE HEATING SURVEY & ESTIMATE ★

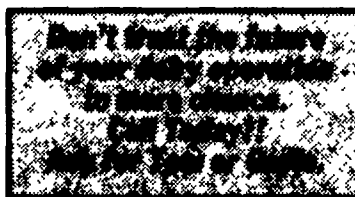
Protect Your Dairy Future!

Own Your Own Herd In 5 Years For As Low As \$30 Per Month Per Cow.

Let Us Show You How Our Program Can Work For You.

BENEFITS INCLUDE:

- * Increase milk receipts
- * Receiving all the offspring and all the milk
- * Have culling privileges
- * Lease is tax deductible
- * You select the cows you want
- * Group insurance policy maintained on the herd.
- * Monthly consulting and reporting service
- * 50/50 Heifer Growing Program



NORTH AMERICAN CATTLE CORP.

3304 Mallard Cove Lane
Fort Wayne, IN 46804
219-432-8062

LARGE TWO-DAY SALE COMPLETE HOLSTEIN-DISPERSAL 400 HEAD SELLING

SATURDAY, OCT. 13, 1984 10:00 A.M.

230 MILK COWS SELL FRIDAY, OCT. 19, 1984 10:00 A.M.

170 HEIFERS SELL

On the farm located in Sharrett Road one mile off Route 194 and 2 miles north of Keymar, in Carroll Co., Md. (4 miles south of Taneytown, Md.).

SATURDAY, OCT. 13, 1984 10:00 A.M.

230 HOLSTEIN COWS SELL

Mostly Grades with a few Registered
58 Sell milking with first calf
33 Sell milking with second calf
54 Cows will freshen in August and September
118 Cows due in October, November and December

DHI Records on Cows Selling Include:

- 24 Cows from 700F to 820F
- 30 Cows from 600F to 700F
- 47 Cows from 500F to 600F
- 45 Cows from 16,000M to 21,000M

Plenty of base milk from young, good ordered cows! Almost all AI sired and bred. A great selection when you have a herd of this size selling.

FRIDAY, OCT. 19, 1984 10:00 A.M.

170 HEIFERS-BRED-OPEN-CALVES

All Home Raised-Nearly all A.I. sired
A large group of heifers of all ages - many ready to breed this fall. Quite a few bred heifers and many well started calves.
Sale Manager's Note: This large offering of both cows and heifers represent years of A.I. breeding to Sire Power bulls. You'll find animals of all ages to suit your needs at this complete dispersal - don't miss it!
Come early - these large sales must start on time.

Sale in Tent Catalogs sale day

TERMS: Cash or good check
Owner
HAROLD E. THOMAS
6210 Sharrett Rd.
Keymar, MD 21757
Ph. 301-775-2094

Sale Manager
REMSBURG SALE SERVICE
P.O. Box 177
Jefferson, MD 21755
Ph. 301-473-8214
JAMES G. TROUT, Assisting