

Hog pen washer saves time

BANGOR — It used to be that when Joe Keifer cleaned out his hog pens it was an all-day affair. It meant soaking the pen walls, scrubbing, and finally, washing away the soil. That changed recently when he purchased a Euroclean E-6 pressure washer.

"It used to take all day — from about 6:00 a.m. until 8:00 or 9:00 p.m. — to get the pens clean. Now it's all done in two to three hours," says Keifer, owner of J.H. Keifer

Farms.

Keifer moves about 800 hogs to market every 90 days. "That's when we do most of our cleaning, though we'll clean some of the pens every three or four days to avoid buildup," Keifer explains.

After some considerable shopping, Keifer was introduced to the E-6 by Bob Welser of the Aqua Cleaning Equipment Co., Pen Argyl, and selected it primarily because of its variable speed

capability. "Sometimes you need 600 pounds of pressure, other times you need 1,800 pounds. I tried one pressure cleaner and the force was so strong that I ended up spraying soil all over the pen ceiling. That's what happens when you can't vary the amount of pressure," he says.

In addition to variable pressure speed, the Euroclean E-6 features dual-wand capability. Both spray wands produce full pressure (1,800 psi) at 3.25 gpm and can be used simultaneously.

The E-6 also employs a direct-drive, six-piston pump, and the pressure control is fully adjustable from zero to 1,800 psi. It also features a special Euroclean system that instantly relieves pressure buildup inside the unit when the spray wand is closed.

The Euroclean pump is protected from hot water damage by a temperature relief valve which automatically opens if bypasses water becomes too hot.

A detachable Transpo-Cart comes as standard equipment with the E-6, permitting either portable operation or permanent installation. The dual-spray wand capability allows installation of the unit in a multi-station cleaning system, where no more than two wands will be used at the same time.

The multi-station feature is another reason Keifer chose the E-6. "One of the big obstacles in our plans for expansion here was how to clean additional pens. With this multi-station capability, we can now proceed with our expansion," he concludes.



With a force of up to 1,800 p.s.i., the Euroclean E-6 pressure washer enables Joe Keifer, Bangor, to clean his hog pens without tedious soaking and scrubbing. The controllable pressure wand lets Keifer apply only the force necessary for each cleaning job.

ABS gets 4 Pa. bulls

DE FOREST, Wisc. — Four Holstein bulls have been acquired from Pennsylvania breeders by American Breeders Service for its Progeny Testing Program.

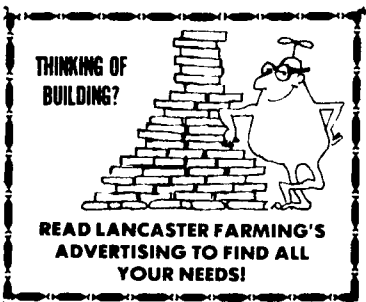
They include Devins Poncho-ET from Genetics Unlimited, Inc., West Grove; Rothrock Valiant Marquis from Rothrock Golden Holsteins, Kempton; Yules-Pride Ijon Jon-ET from Richard and Virginia Yule, Millville; and Lime-Valley-A Highclass-ET from Lime-Valley Associates, Strasberg.

Devins Poncho-ET was sired by Sterk R A Ijon, +\$150, +1,013M and +50BF and Devins Arlinda Chief Pearl. His dam has production records to 29,279 lbs. of milk. She is classified EX-90 and is sired by Pawnee Farm Arlinda Chief.

Rothrock Valiant Marquis was sired by S-W-D Valiant, +\$175, +1,295M and +54BF and Grac-Glen Columbus Milly. His dam has production records to 19,465 lbs. of milk. She is classified VG-87 and is sired by Leadfield Columbus-ET.

Yules-Pride Ijon Jon-ET was sired by Sterk R A Ijon, +\$150, +1,013M and +50BF and Cha-Do Jet Stream Jetta. His dam has production records to 29,256 lbs. of milk. She is classified VG-87 and is sired by Arlinda Jet Stream-Twin.

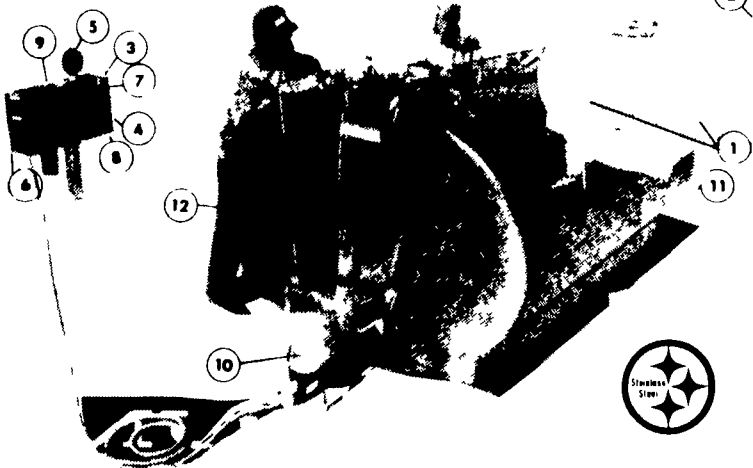
Lime-Valley-A Highclass-ET was sired by Sterk R A Ijon, +\$150, +1,013M and +50BF and Springiva Rocket Lois. His dam has production records to 28,170 lbs. of milk. She is classified EX-90 and is sired by Whittier-Farms Apollo Rocket.



MUELLER

HiPerForm

It's like Money in the Bank!



1. COOLING PLATES: Stainless steel patented Mueller Temp Plate® Heat Transfer Surface
2. REFRIGERANT LINES: Precharged stainless steel piping between inner and outer cooler walls
3. REFRIGERATION CONTROL SYSTEM: HiPerForm, electronic with many new features
4. PRE-START CONTROL: Allows cooling and agitation before adding fresh warm milk into milk already cooled
5. ALARM CIRCUIT: Five-inch red light with three warning modes
6. MANUAL BYPASS SWITCH: For emergency cooling operations
7. DIGITAL DISPLAY: Accurately indicates milk or wash water temperature
8. AGITATOR TIMER: For agitating milk the required time before butterfat sample is taken
9. INTERVAL TIMER: Automatic agitation at preset time interval
10. AUTOMATIC WASHING SYSTEM: Efficient jet tube cleaning with the Mueller Matric® Automatic Washing System
11. LEG SUPPORT BEAM: Constructed with no metal-to-metal contact between inner liner and exterior

USED TANKS

1500 Mueller OH	500 Milkeeper
1250 Mueller OH	400 Milkeeper
800 Dari-Kool - Round	300 Gallon Sunset

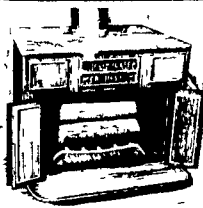
MARTIN'S REFRIGERATION SERVICE



Milk IS the real thing!

1122 Woodstock Rd.,
Fayetteville, Pa. 17222

Phone (717) 352-2783
Sales & Service



Hydro Heater,
Conestoga &
Baker Stoves
Or Fireplace
Inserts
"Before You Buy...
Give Us A Try"

J&A STOVE SALES

3753 East Newport Road, Gordonville, Pa. 17529
ROUTE 772 1/2 MILE EAST OF INTERCOURSE
717-768-8913

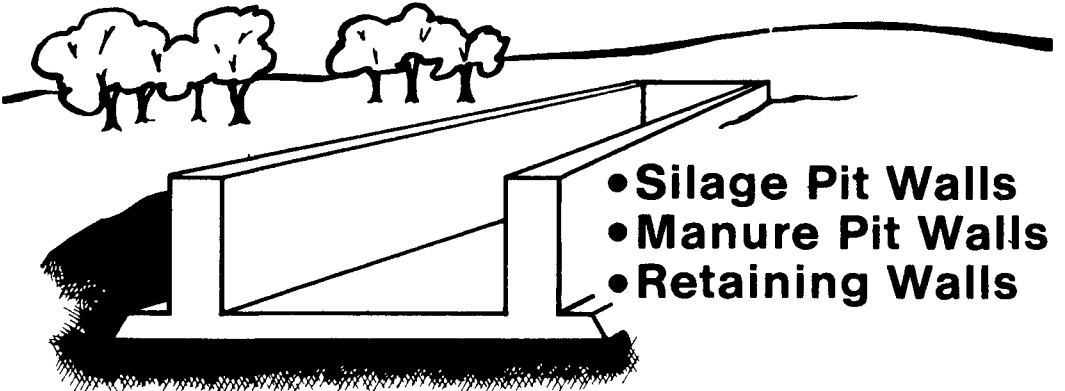
AVAILABLE

All Natural
New York State Cheddar Cheese
or higher Moisture Cheese
Like Longhorn or Colby
42 Lb. Blocks

Medium Sharp \$1.90 per Lb.
Mild \$1.80 per Lb.

Prices Postpaid
Please send Check or Money Order to:
ADIRONDACK CHEESE CO.
RD 1 Box 74, Newport, New York 13416

POURED SOLID CONCRETE STORAGE SYSTEMS



- Silage Pit Walls
- Manure Pit Walls
- Retaining Walls

Increase Your Volume
By In-Ground Storage
Any Size

Balmer Bros.

CONCRETE WORK, INC.

410 Main St. • Akron, PA 17501 • (717) 859-2074 or 733-9196