

All - American has full schedule of events

HARRISBURG — With curry combs, hoof polish and dairy whites in tow, 397 participants in the 21st Pennsylvania All-

American Dairy Show will converge on Harrisburg's Farm Show Complex tomorrow to prepare for the Show's Monday opening.

One of the top three national dairy circuit events, the All-American is slated through Friday. The 1,394 entries in six

breed shows are competing for \$78,000 in premiums.

It is fitting that a dairy show of this caliber be held in Pennsylvania. Dairy is the state's leading agricultural industry, and each year 15,000 dairy farmers produce more than four billion quarts of milk valued at \$1.3 billion. As a result, Pennsylvania ranks fifth nationally in milk production, according to State Secretary of Agriculture Penrose Hollowell.

Opening the Show Monday at 8 a.m., the Invitational Youth Judging Contest fields 46 4-H, FFA and Intercollegiate judging teams from across the country. It is followed by 9 a.m. by the Pennsylvania Junior Dairy Show which has approximately 650 entries from across the state. The All-American Recognition Banquet is that evening at 7 p.m. at the Penn Harris Motor Inn, Camp Hill.

The first of three breed sales — the Invitational Brown Swiss Sale — boasts 24 entries and is also scheduled for 7 p.m. Monday.

Tuesday's activities are highlighted by the first of three national shows — the Eastern National Brown Swiss Show — at 9 a.m. with 202 entries. The Pennsylvania All-American Milking Shorthorn Show, with 91 entries, also begins at 9 a.m.

The first Ayrshire sale since 1975 is set for 1:30 p.m. Tuesday. The Pennsylvania Elite Ayrshire Sale has 20 entries.

The All-American is more than breed shows, as Monday's judging event illustrates. Tuesday, 400 state youth participate in the Pennsylvania 4-H and FFA Dairy

Judging Forum at 10 a.m.

An annual highlight of the All-American is the crowning of the Pennsylvania Dairy Princess. Tuesday's 6:30 p.m. banquet at the Marriott will climax in the coronation of the 28th state dairy princess. The 39 contestants were selected at the local level and participated in a 3-day training session prior to the contest. Contestants are selected based upon several criteria including poise, speaking ability and educational skits.

The second of the three national shows gets underway Wednesday. The National Guernsey Show, with 212 entries, begins at 9 a.m., as does the Pennsylvania All-American Ayrshire Show with 148 entries.

The final national show is set for Thursday at 9 a.m. — the Eastern National Holstein Show with 567 entries. The All-American Holstein Sale, with 45 entries, is scheduled Thursday at 7 p.m. The Pennsylvania All-American Jersey Show has 174 entries and begins at 9 a.m.

The final segment of the Holstein Show, milking cows, begins at 8 a.m. Friday.

There is no admission charge for Dairy Show visitors. The Farm Show Complex is open to the public from 8 a.m. to 8 p.m. the week of the Show.

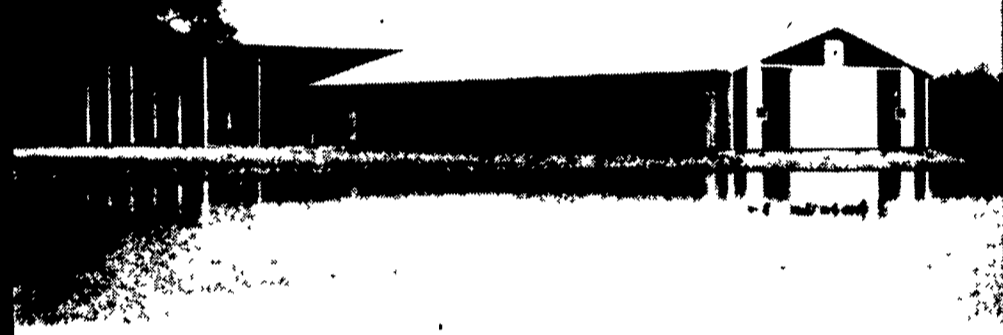
The Pennsylvania All-American Dairy Show is sponsored by the Pennsylvania Dairy and Allied Industries Association in cooperation with the Pennsylvania Department of Agriculture and the Pennsylvania Farm Products Show Commission.

LEASING AVAILABLE



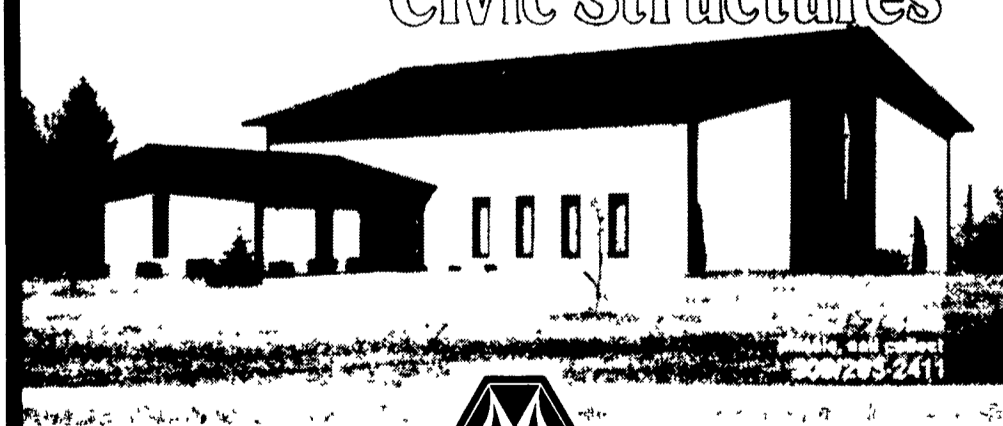
Morton Buildings

for: Suburban,
Arenas & Stables



Agricultural

Commercial and Civic Structures



MORTON BUILDINGS

Call or write today to arrange to see and hear more reasons why you should own a Morton Building



WEATHER VANE
with every
building
purchased

1185 York Rd
Gettysburg, PA 17325
Rd #10 Box 76
Meadville PA 16335
State College Box 361
Centre Hall PA 16828
Box 126
Phillipsburg, NJ 08865
1918 Industrial Drive
Culpeper VA 22701
P O Box 187
Harrington, DE 19952

Ph 717/334 2168

Ph 814/336 5083

Ph 814/364 9500

Ph 201/454 7900

Ph 703/825 3633

Ph 302/398 8100

NOTICE

1984 may produce the **HEAVIEST CROP RESIDUES** you've ever seen! To handle them, you need

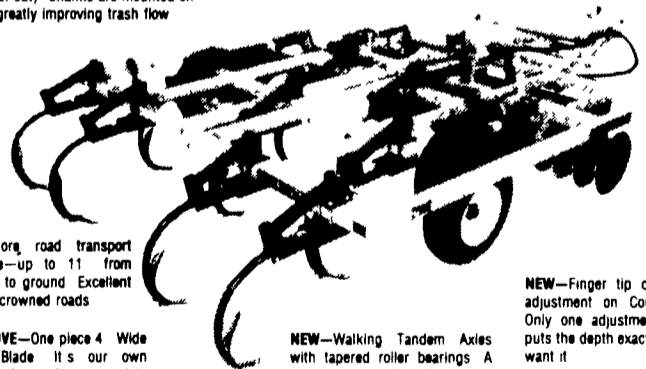
SOIL-MASTER II

A Brand-New Generation — One Trip Primary Tillage

NEW—Tubular Constructed 120 Deep Weighted Frame (weighs up to 557 lbs per foot of cut) Shanks are mounted on 3 bars greatly improving trash flow

NEW—Generation II Models in sizes of 8 9 11 3 13 9 and 16 3 (Original models from 6 3 to 23 9)

NEW—Heavy constructed hitch It's wider and longer (102" long)



NEW—More road transport clearance—up to 11" from point tip to ground. Excellent for high crowned roads

EXCLUSIVE—One piece 4" Wide Helical Blade It's our own design and provides a complete roll of the soil over the blade for better incorporation. Not available anywhere else

NEW—Walking Tandem Axles with tapered roller bearings. A complete new axle design — with lots of extra trash clearance between tires and shanks (Optional on 11 3 & 13 9 models. Standard on 16 3 model)

NEW—Finger tip depth control adjustment on Coulter Gangs. Only one adjustment per gang puts the depth exactly where you want it

SOIL-MASTER II is designed to enhance your management of the four essential soil basics:

1. Soil Aeration
2. Soil Water
3. Residue decay
4. Fertility

SOIL-MASTER II Many try to copy the iron. No one duplicates its performance for you!

For additional SOIL-MASTER II benefits, contact:



PARTS ★ SALES
★ SERVICE

R7 Lebanon, Pa. 17042
Rt 419 1 mile West of Schaefferstown, Buffalo Springs

Lebanon County 717-949-6501
NEW TOLL FREE NO. 1-800-822-2152