

Omaha Weekly

Thursday, September 20
Report supplied by USDA

Fed cattle prices ranged weak to 50 cents lower through midweek. Large movements of cattle from direct selling points and a liberal Slaughter rate kept downward pressure on the price structure through the week, but small salable numbers kept losses at a minimum. Overall finish continues to improve, due primarily to ideal feeding weather. Slaughter Cows 1.00-1.50 lower, Slaughter Bulls weak to 1.00 lower.

Estimated 5 day receipts 10,200; actuals last week 8,390, and a year ago 11,905. Steers comprised 28 pct of the week's receipts; Heifers 27 pct., Cows near 8 pct. Feeders 35 pct.

SLAUGHTER STEERS: At the close, scattered loads and part loads Choice 2-4 1050-1225 lbs. 63.00-63.75. Mixed Good and Choice 2-3 1025-1150 lbs. 61.50-63.00. Few Good 59.50-61.50.

SLAUGHTER HEIFERS: Scattered loads and part loads Choice 2-4 950-1075 lbs. 61.00-62.50; several lots 875-950 lbs. 59.00-60.50. Mixed Good and Choice 2-3 900-1050 lbs. 59.00-61.00. Good 56.00-59.00.

Average of LS 214 detailed quotations on 900-1100 lb. Choice Steers 62.60; 1100-1300 lbs. 63.68. Average price Steers 61.85, average weight 1134 lbs.; as compared 63.27 and 1134 lbs. a week ago. Average cost Heifers 60.81, average weight 1012 lbs. as compared 61.70 and 1015 lbs. a week ago.

COWS: Closing sales, few breaking Utility 2-3 38.00-40.00. Cutter and Boning Utility 1-2 33.50-38.25. Canner and low Cutter 30.00-33.50.

BULLS: 1-2 1165-1900 lbs. 44.25-46.25, few low dressing to 42.00.

Carlisle Livestock Auction

Carlisle, Pa.
Tuesday, September 18
Report supplied by auction

CATTLE: Steers: Good run, steady to 1.00 higher. Choice 62.00-64.85; Good 58.75-61.00; Medium 58.00 down. Heifers: Good run, mostly steady. Choice 60.00-61.60; Good 52.00-59.00; Medium 45.00-51.00; Utility 44.00 down. Cows: Strong demand- steady to 1.00 higher. High Yield 41.50-45.00; Average 36.00-41.00; Big Middle 35.00-39.00; Shelly 35.00 down. Fat Bulls: Good 51.50-54.60; Medium to 45.50-48.25.

FEEDER CATTLE: Good run. Steers (300-550 lbs.) 2.00 lower. Choice 60.00-66.00; Good 55.00-59.00; Medium 51.00-54.00. Steers (600-850 lbs.) Steady. Good 56.00-59.00; Utility 42.00-46.00. Heifers (all weights): Steady. Choice 55.00-58.00; Good 51.00-54.00; Medium 46.00-50.00; Utility 37.00-45.00. Bulls (all weights): 3.00 lower. Choice 57.00-61.00; Good 50.00-56.00; Medium 46.00-49.00.

VEAL CALVES: Good 60.00-65.00; Medium 45.00-60.00; Light/weak 44.00 down; Farm Bulls 60.00-66.00.

HOGS: Barrows & Gilts mostly steady- spots 1.00 lower. 210-250 lbs. 48.50-50.25; over 260 lb. 46.00-49.10.

SOWS: 450 to 525 lbs. 38.75-42.25; under 450 36.25-43.25. Boars: Heavy 32.50-33.25.

FEEDER PIGS (by the hd) Good run; 1.00 to 2.00 higher (20-25 lbs. 23.00-24.00) (25-30 lbs. 22.00-23.00) (40-45 lbs. 38.00-45.00).

SHEEP: Large run. Lambs: Mostly steady. Choice 2.00 higher; Medium to Good 2.00 lower. Choice 66.00-74.00; Good 58.50-65.00; Med. 53.00-58.00. Ewes- 21.00-25.00.

Goats: (Lg) to 57.00 (hd); Sm./Med. 16.00-35.00 (hd).

Dewart Auction

Dewart, Pa.
Monday, September 17
Report supplied by PDA

CATTLE 267. Compared with last Monday's market, Slaughter cows uneven \$1.00 lower to \$1.00 higher. Choice 2-4 1000-1225 lbs. slaughter steers 63.25-66.25 Mix Good & Choice 62.00-64.00, Few Good 57.75-60.25, Standard 46.50-52.00. Few Choice slaughter heifers 59.00-63.50, Few Good 52.00-59.00 Few Standard 43.50-47.00. Breaking Utility & Commercial slaughter cows 38.75-43.60, Couple to 44.60, Cutter & Boning Utility 36.75-40.50, Canner & Low Cutter 31.00-36.75, Shells down to 27.00. Yield Grade No. 1 900-1900 lbs. slaughter bulls 44.25-51.50, Yield Grade No. 2 750-950 lbs. 37.00-44.50.

FEEDER CATTLE: Steers- Few Medium Frame #1 250-350 lbs. 60.00-70.00.

CALVES 248. Choice Vealers 70.00-83.00, Good 56.00-67.50, Standard & Good 70-105 lbs. 42.00-48.00, Few Utility 60-85 lbs. 32.00-42.00.

FARM CALVES: Holstein bulls 90-125 lbs. 50.00-70.00.

HOGS 142. Barrows & gilts \$1.00 lower. One Lot US No. 1-2 210 lbs. barrows and gilts at 49.00, No. 1-3 220-240 lbs. 48.40-48.60. **SOWS:** US No. 1-3 315-660 lbs. sows 42.00-46.75, couple 48.00, Medium 250-375 lbs. 29.00-40.00.

FEEDER PIGS 160. US No. 1-3 20-40 lbs. feeder pigs 20.00-32.50 per head, Lot No. 1-3 60 lbs. at 40.00, No. Lot 1-3 100 lbs. at 46.00, per head one Lot 135 lbs. at 45.00 per hundredweight.

SHEEP 30. Choice 70-105 lbs. spring slaughter lambs 57.00-70.00, couple to 77.00. Few Slaughter Ewes 12.00-16.00.

Keister's Middleburg Livestock

Middleburg, Pa.
Tuesday, September 18
Report supplied by auction

CATTLE 347: Choice slaughter steers 63.00-66.85, Good 58.00-63.00, Standard 52.00-58.00, Utility 42.00-52.00. Good slaughter heifers 52.00-61.50, Standard 45.00-52.00, Utility 40.00-45.00. Breaking Utility & Commercial slaughter cows 40.00-45.85, Cutter & Boning Utility 38.00-42.75, Canner & Low Cutter 30.00-38.00, Shells down to 28.00. Good slaughter bullocks 52.00-57.25. Yield grade No. 1 1200-2065 lbs. slaughter bulls 46.00-54.75, #2 800-1200 lbs. 40.00-46.00.

FEEDER CATTLE: 350-750 lbs. feeder steers 45.00-65.00; 350-750 lbs. feeder heifers 32.00-51.50; 350-750 lbs. feeder bulls 38.00-60.00.

CALVES 142: Choice vealers 70.00-87.00, Good 60.00-77.00, Standard and Good 90-110 lbs. 45.00-50.00, 60-90 lbs. 30.00-45.00.

FARM CALVES: Holstein Bulls 90-120 lbs. 60.00-80.00.

HOGS 642: US No. 1-2 215-235 lbs. barrows and gilts 49.00-50.60, few select 51.50, No. 1-3 190-250 lbs. 48.50-49.00, No. 2-3 190-270 lbs. 46.00-48.50. US No. 1-3 375-700 lbs. sows 42.00-46.00, No. 2-3 290-500 lbs. 35.00-42.00. **BOARS** 30.50-38.75.

FEEDER PIGS 279: US No. 1-3 10-25 lbs. feeder pigs 15.00-30.00 per head, No. 1-3 25-50 lbs. 30.00-48.50 per head.

SHEEP 29: Good 60-80 lbs. spring slaughter lambs 55.00-62.00.

Westminster Livestock Auction

Westminster, Md.
Tuesday, September 18
Report supplied by auction

SLAUGHTER COWS: Good run.

prices steady. High Yield 42.00-43.00; Utility 39.00-42.00; Canners 35.00-39.00; Shelly 36.00 down.

BULLS: \$1.00 to 2.00 lower. Good 47.00-51.25; Medium to Good 45.00-46.00.

FED BULLOCKS: to 54.25.
FED STEERS: No Choice offered. Good 55.00-59.00; Holsteins 47.00-49.25.

FED HEIFERS: Low Choice to 59.25; Good 54.00-57.50.

VEAL CALVES: Good 50.00-60.00; Stocky/Thin 20.00-40.00; Killers 80-110 lb. 40.00-48.00; Weak/Rough 20.00 down.

FARM CALVES: Holsteins Bulls 95-125 lb. 55.00-70.00, few to 74.00.

HOLSTEIN HEIFERS: 100-110 lb. to 48.00.

BUTCHER HOGS: 1.00 lower. US 1&2 215-250 lb. to 48.75; 70-195 lb. few to 46.50.

SOWS: 300-525 lb. 41.00-44.25, thin 33.00-35.00.

BOARS: 290-350 lb. 31.50-32.00; 600-760 lb. 32.75-33.25.

STOCK CATTLE: 75 head, good demand.

STEERS: Bulk 500-850 lb. Choice 59.00-63.00; Good 53.00-59.00; Some 850-1000 lb. 52.00-59.50; Holsteins 500-900 lb. 44.00-49.50.

HEIFERS: 300-500 lb. Choice 49.00-53.00; Good 44.00-49.00; 500-700 lb. Choice 50.00-54.00; Good 40.00-49.00.

BULLS: Few Good 300-600 lb. 50.00-54.00.

LAMBS: 1 lot Choice 112 lb. 63.50; 1 Good 70 lb. at 56.00.

SHEEP: Few 30.00-31.00.

GOATS: By the Head- Mature 22.00-36.00, one to 53.00; Kids 14.00-32.00.

PIGS AND SHOATS: 100 head, price steady. By the Head: 15-35 lb. 19.00-24.00; 40-54 lb. 32.00-35.00; 60-90 lb. 34.00-42.00. By the Lb.- Few 120-135 lb. 42.00-45.50; Stock Boars 230-285 lb. 34.00-37.00.

SBM DOWNGOING HEAT

SBM AUTOMATIC BROODERS

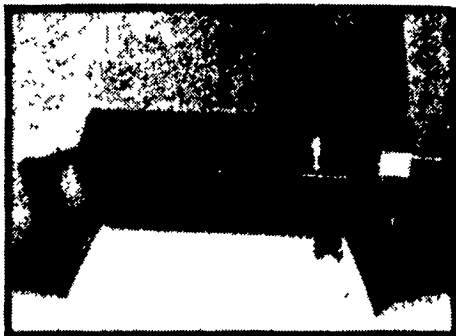
NEW

100% SHUT OFF

AVAILABLE FOR POULTRY OR SWINE



Sunnybird® 2
4,400 BTU Maximum



Sunnybird® 8
14,000 BTU Maximum



SunMaster™
(Auto Group Control Kit)

FEATURES ELECTRONIC IGNITION ELIMINATING:

- 1. FUEL WASTING PILOTS
- 2. OVER HEATING
- 3. UNDER HEATING
- 4. GUESS WORK
- 5. ADJUSTING NUMEROUS THERMOSTATS

- ★ THE NEW CONTROL PANEL DISPLAYS ROOM TEMPERATURE CONSTANTLY ON A LCD PANEL ALLOWING THE OPERATOR TO TELL ACCURATELY AT A GLANCE WHAT HIS ROOM TEMPERATURE IS.
- ★ FOR MORE INFORMATION CALL OR WRITE.

COMPLETE SYSTEMS, EQUIPMENT, SALES, INSTALLATION, SERVICE FOR CATTLE, HOG, POULTRY AND GRAIN

AGRI-EQUIPMENT, INC.

2754 CREEK HILL RD., LEOLA, PA 17540
(Lancaster County)
PHONE: 717-656-4151

STORE HOURS
Mon.-Fri 7 30 to 4 30
Sat 7 30 to 11 30
(Parts Only)

See What's Happening on Page A-11

SOLO JETPAK-425 \$9995.



SOLO S JETPAK 425 provides professional application of insecticides, fungicides, pesticides, and herbicides in garden or chard, greenhouse, or nursery. Optional, interchangeable nozzles give JETPAK-425 real versatility. This lightweight, rugged sprayer is made of high impact, inert plastic.

- 4-gal see-through tank
- Weighs only 9.5 lb
- Large-displacement piston pump maintains continuous pressure with little effort
- Padded, adjustable leather carrying straps
- Optional free spraying tube spray drift guard pressure gauge/limiting valve

Lancaster County's Only Dealers Specializing In Sprayer Sales & Service

LESTER A. SINGER
Ronks, PA
Ph (717) 687-6712
Mon-Fri 8 to 5,
Sat. By Appt
Dealer Inquiries Invited

