

# Hershey hosts Red Power Days



## BUSINESS NEWS...

### Select Sires adds bulls

PLAIN CITY, OHIO — Select Sires has acquired two outstanding young bulls from Pennsylvania. Based on their superior pedigrees, Penn-England Murdock-ET and Browncroft J S Challenger have been chosen as two of 130 Holstein bulls from throughout the United States to enter Select Sires Program for Genetic Advancement (PGA) sire sampling system in 1984.

Penn-England Murdock-ET comes from breeder Fred England of Williamsburg. The dam of this bull calf is Clover-Will Starlite Marge 326, a Very Good (86) Roybrook Starlite daughter with high test. Her first record at 1-10 is 18,670M 845F 4.5% in 454 days. Three consecutive lactations have produced over 22,500M and 1,000F.

Her best record is 20,160M 1,195F 4.7% in 365 days, with a lifetime test average of 4.6%. The grandam is Clover-Will Standout Marge (VG-88) with records to 19,820M, all being 4.0% or higher. The sire of this PGA calf is Hilliana Valectorian, a triple plus Arinda chief son.

The second young Pennsylvania bull calf is Browncroft J S Challenger bred by William J Brown of Rome. His dam is Browncroft King Jet Flop-Twin (VG-87). An Arinda Jet Stream daughter, she made over 21,500M as a two-year-old. Being twice over 1,000F, her best record is 31,408M 1,120F 3.5% in 365 days. The grandam is Browncroft Doby Kingpin (VG-80) also twice over 1,000F. She has a best record of 27,900M 4.3% 1,203F in 365 days.

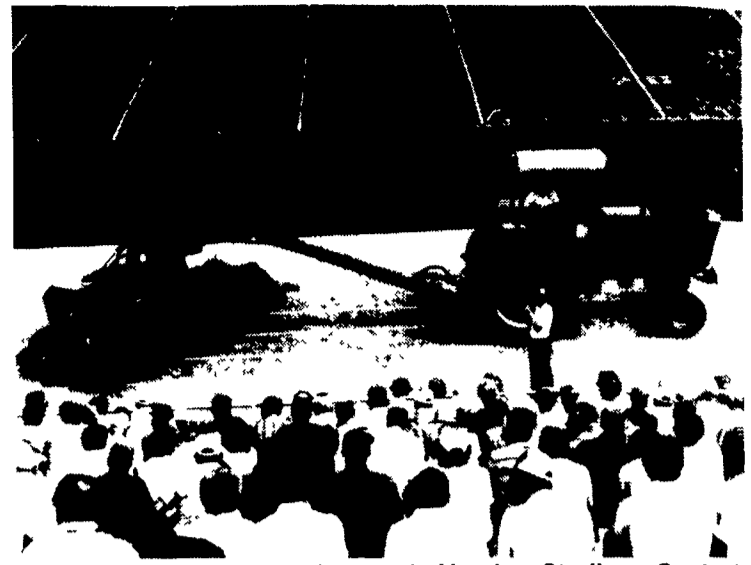
HERSHEY — With clear, autumnal skies and a refreshing breeze, the Central Pennsylvania International Harvester Red Power Progress Days got underway mid-morning on Sept. 13 at the Hershey Stadium.

Twenty-five pieces of the well-known red equipment, including 15 different tractor models, and the new Super 70 series were displayed and demonstrated at the annual event, sponsored by the following dealers: C and W equipment, Carlisle; R.S. Hollinger and Son, Mountville; Messick Farm Equipment, Elizabethtown; C.B. Hoover and Son, Intercourse; Erb and Henry Inc., New Berlinville; Mifflinburg Farm Supply, Mifflinburg; Inch Equipment, McAllister; Eckroth Bros., New Ringgold; and Swope and Bashore Inc., Frystown.

An estimated 700 people attended, with lunch served at noontime.

An entertaining and informative skit was performed immediately after the meal by Service Manager Ed Skeele.

After the product presentations, farmers were encouraged to test drive the machines in a designated area near the stadium.



Looking down from their seats in Hershey Stadium, Central Pa. farmers view IH Model 1490 — a pivotal 12-foot mower-conditioner.



One of the stars of Red Power Progress Days at Hershey Stadium was the IH Super 70 Series tractors, which are scheduled to be on dealer lots later this fall.

### Hesston offers new loaders

HERSTON, Kan. — Hesston Corporation now offers four heavy-duty front-end loader models specifically designed for the company's new 66 and 90 Series two- and four-wheel drive tractors. These Models L330, L350, L350H and L370 feature low-profile design and fast, easy hookup.

All have rugged industrial-strength frames with durable seamless-steel hydraulic lines located inside the frames for excellent protection. The loader frames are designed to distribute loads and stress evenly over the tractor's monoblock mainframe. And the new low-profile configuration affords maximum visibility from the operator platform or cab.

Each comes with a standard parking stand and employs a quick-attach design to permit drive-in/drive-out mounting or unmounting in just minutes. The new loaders also perform with faster cycle times to increase productivity.

The Model L330 has been designed to fit Hesston tractor Models 55-66, 60-66, 70-66, 80-66 (45 to 70 hp) and 60-90 (62 hp). The L350 is built for the 70-90 (62 hp) and 80-90 (71 hp) tractor models while both the L350 or L350H loaders will fit 90-90 (81 hp) and



Heavy-duty front-end loaders are now offered by Hesston Corporation for its 66 and 90 Series tractors.

100-90 (91 hp) tractors. The Model L370 has been designed for over-100 hp tractors — the Models 130-90, 140-90, 160-90 and 180-90 (107-162 hp). The new front-end loaders also fit all of the old tractor models.

A wide selection of attachments

are available for use with Hesston loaders, including material buckets, tine kits, forklift attachments, spill guards, a snow bucket and hay grapple fork, manure fork, bucket level indicators, dirt or dozer blades and PSA brackets for quick hookup of attachments.

### Humane cites calf hutch

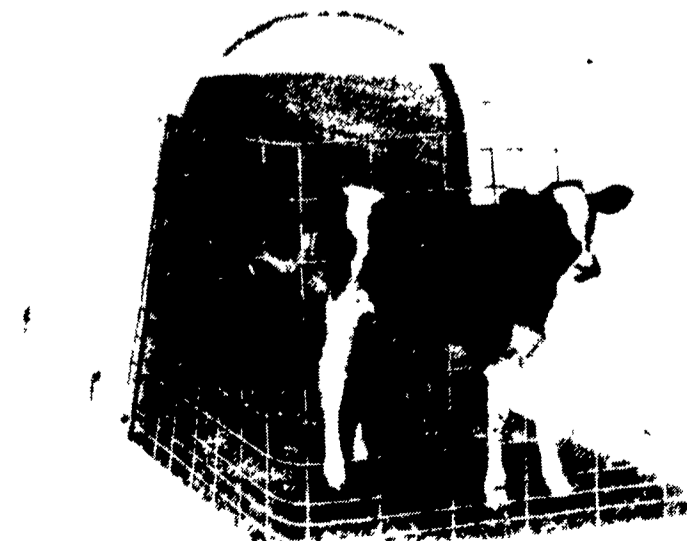
BARABOO, Wisc. — Humane Equipment Co. has announced the addition of a lightweight, economical calf hutch to its barn equipment line. Constructed with an easily assembled galvanized steel tube frame, the hutch features an industrial type rip-proof, polyethylene fabric cover that is moisture-proof, rot-proof, resists UV light breakdown, and will stand up to all types of weather including high winds.

The hutch is equipped with a translucent cover that is warmer in the winter and is available with an optional reflective slip cover for summer use. The non-porous, non-toxic covers are sanitary because they won't absorb germs or manure acids and are easy to clean.

The hutch measures 45" wide x 70" long and 48" high. It is secured in place by four U" anchor stakes. It can be quickly and easily set up in minutes, easily moved, or stacked for storage when not in use. Since the unit only weighs 44

lbs., it can be shipped by UPS. Complete details are available

from Humane Equipment Co., P. O. Box 24, Baraboo, WI 53913.



Calf hutch from Humane Equipment features fabric cover

### Cyanamid appoints Walton

WAYNE, N.J. — David S. Walton has been appointed product manager and most recently was manufacturing manager for all Animal Nutrition and Health products at the Agricultural Division of American Cyanamid Company. In his new position, Walton will be responsible for antibiotics, feed nutrients and new product segments of the business.

Walton joined Cyanamid in 1979 as marketing assistant in the

Pesticides Department, served as product manager and most recently was manufacturing manager for all Animal Nutrition and Health products.

A native of London Grove, Pa., Walton holds a B.S. in chemical engineering from Penn State. He received an M.B.A. in marketing/finance from the Wharton School of the University of Pennsylvania.

### Patz reports silo ring drive

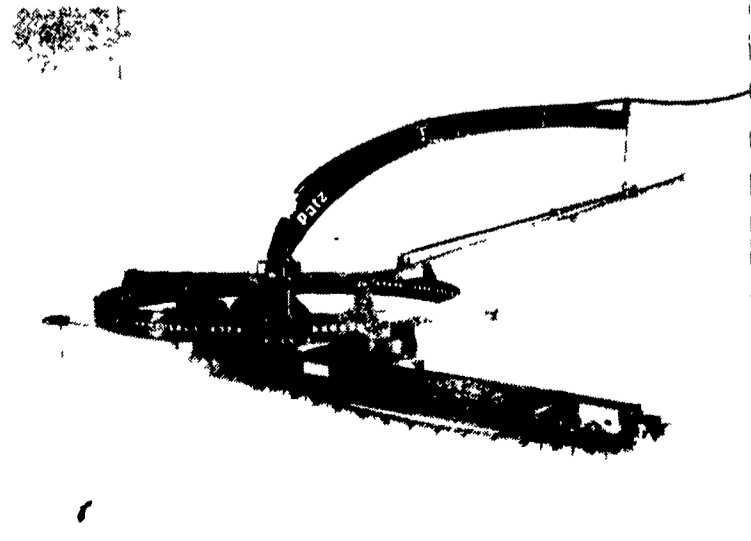
FOUND, Wisc. — A new ring drive allows one motor to power the Patz RD-820 Silo Unloader. In addition to lowering the price, the Patz roller-chain ring drive provides increased efficiency, faster installation, high reliability and long life.

The Patz drive ring can be turned over, if necessary, for doubled ring life. The 9-foot diameter, 7 3/8-inch-high ring is made from 3/16-inch steel with a wide flange to the inside on the top

and bottom of the ring for extra strength and rigidity.

The Patz RD-820 Silo Unloader also offers these features: aggressive Patz cutter-and-claw gathering chain, Patz power cutter that keeps silo walls clean, Automatic lowering after each complete revolution (optional) and Simple 3-point suspension and 9-foot ring balance without counterweights.

For more information, contact Patz dealer or Patz Company, Found, Wisconsin 54161.



Patz silo unloader now features a new ring drive.