

**32 MISCELLANEOUS**

Bought and sold new and used cardboard boxes; drums, plastic scrap, Reliable Recyclers, 178 Greenfield Road, Lanc. PA. 17601, 717-397-7695.

Locust post, fully seasoned for fencing, landscaping, etc. Wholesale quantities. 717-555-5587, evenings.

Copper 40 gal. apple butter kettle with stark, excellent condition, \$450.00. 301-694-9527.

THE DRY TOILET. Uses no water or chemicals. Replaces standard septic system. EPA approved 800-242-3909. Dealer inquiries invited.

Continental Red Seal engines Models F162 with transmission Models Y112 with Rockford clutch, like new. Phone 717-626-7663 Lancaster Co.

New Noritake azalea china book and current price guide. Send \$10.60 to Stephenson's, 730 North 5th Street, Hamburg, PA 19526.

For Sale - store shelves, scales, jet spray juice machine, ice builder for cooling milk, ice cream freezers, double stainless steel sink w/extensions, milk dollies for walk-in cooler, meat slicer, grocery carts. 717-532-9271.

Pole Buildings - 24'x40', completely erected, \$3,750.00. Overhead and entrance doors included. Other sizes available. Call Chaparral Buildings. 1-800-772-0072. 8:00 AM - 7:00 PM.

For Sale - Used galvanized wire mesh sheets 14 gauge, 1"x2" mesh, 5' wide x 10' long sheets. Good for corn cribs, \$8.00 per sheet. Delivery available. 717-354-9840.

1 PARKARD CHASSIS - disc wheel, rear end spring & steering. Year about 1938-'42. 215-767-3534.

**LIVE GAME FISH** Fingerlings and Adults Large and Small Mouth Bass Spotted and Rock Bass Bream Crappies Trout Channel Cats Bullheads Walleyes Perch Minnows Northern Pickereel Muskies Red Gills Mulletts, Carp Eels Turtles Frogs Israeli Carp Also Aquatic Plants and Water Lilies COLORFUL Pond Management Truck Air and Parcel Post Delivery

**ZETTS FISH HATCHERIES**  
DRIFTING PENNA 16834  
Phone 814 345-5357

**SATELLITE SALES AND SERVICE** Complete system as low as \$2295. 100% financing available. Advanced Communications. 717-392-1222.

Wanted - Log Cabin Kit, used. Call 1-301-679-3282.

(8) New #250 Buckner 1 1/2" female irrigation sprinklers, 85 GPM, 100' radius, at 90 lb pressure. Best offer over \$150 each. Call 215-582-2197.

(1) 10,800 gallon railroad tank, best offer over \$1,500; (2) 4,000 gallon underground tanks, best offer over \$200; (1) 3,000 gallon underground tank, best offer over \$150. Call 215-582-2197.

For Sale - E.F.M. Coal Conversion Unit. Convert your furnace to coal stoker, like new. \$300.00. Lebanon Co. 717-273-6018 after 5 PM.

WANTED - 10' Sliding Brake, must be in good condition. 717-354-0035 evenings.

For Sale - Pitney bowes 253 copier, \$495. Call 717-367-1211.



FOR SALE - New and used automatic washers, dryers, gas and electric refrigerators, ranges, used wringer-engine washers, new bedroom furniture. Open 7:30 to 4:30; Saturday, 7:30 to 12:00; evenings by appointment. Myer's Washer-Dryer, Rt. 772, between Brownstown and Leola. 717-656-7169.

One hive or 50, some with honey crop. Call 301-838-7648.

Arrow Murryhill module utility building, 14x31', side entrance door, 8' wide overhead end door. Never assembled, \$1,200. 717-438-3556. Perry Co.

**USED STONE PICKERS**  
Hopper and Conveyor types. Picks stone 1 1/2 inches up. Five-ten acres daily. 4-yard hopper capacity. Ready to work \$2950. Rebuilds \$3500 up.

**Davey-Joan's**  
Williamstown, NY 13493  
(315) 964-2294

**FOR SALE TOP SOIL \$70.00**  
20 Ton Truck Load DELIVER WITHIN 4 MILES

**AMOS S. STOLTZFU**  
552 Beechdale Road  
Bird-in-Hand, PA 17505

**We Pay Top Prices For Standing Hardwood Saw Timber**

**Weaver Bros. Sawmill**  
Beaver Springs, PA  
**717-658-3447**  
collect after 5 PM

**34 AUTOS**

1977 CORVETTE T-BAR ROOF, 350 Automatic, Loaded, 22,000 miles, mint condition, \$12,000. 814-857-7911.

**35 TRUCKS AND TRAILERS**

For Sale - 1973 40' flat trailer, gram sides, excellent condition. 301-778-0935.

76 Mack, 237, 6sp 20ft Alum Dump, Feed Body Blower etc. **\$22,500**

73 Ford 318 Det, 13sp 19ft Dump, Feed Body Blower, etc. **\$18,500**

**CURRY SUPPLY CO.**  
Curryville, Pa. 814-793-2829

57F 600 10 ton flat bed. Best offer. 717-845-5714.

1981 Gilmore Dump Trailer 33'7" frame with 32 ft. box. Tri-axle with all alum. Budds. 11x24.5 Radial Tires. Wet line & roll-on tarp, barn door gate, excellent condition. Lanc. County. 717-786-4568 after 6:00 p.m.

1974 Chevy C-10 1/2 ton, 79,000 miles, S.S., AM/FM, Cap. P/B, 350-V8, nice. \$2,500. 717-656-6322.

6'x8'x7' livestock trailer. Racks removable. Northumberland Co. 717-275-3309.

Crane truck, 1968 International 16' Knapheid bed and model 5501 Hiab crane with 16'5" outreach. Can be extended up to 29' Umt in very good condition. 717-263-0826.

22' Steco steel dump trailer, new hoist, \$1,800, 1972 Ford LN800 tandem axle dump truck cat diesel, less than 15,000 miles on motor, \$6,800. Wayne County 717-253-4606.

A nice 1974 Int. 1910 10 wheeler w/new 20' grain body, all tires are brand new, must be seen to be appreciated. 301-429-2962 after 6 p.m.

For Sale - Ford 7000 cab over diesel w/live bottom, 18' van has 1,080 cubic ft. capacity, complete hydraulic system, very nice running truck, excellent for hauling corn cobs, tan bark, compost or silage. For more information call 717-394-3752 evenings.

Very good work truck, heavy rear suspension, 1 owner, 1977 Dodge pickup, V8, 318 engine, 3/4 ton, PS, PB, auto. transmission, good condition, 53,000 original miles, \$2,500 or best offer. Call 215-926-4410.

STORAGE TRAILERS FOR RENT - 40 ft. nice, available immediately, delivered. Office trailers also available. 301-771-4529.

1968 Chevy C-60 w/leader spreader body and side auger, 30,000 GVW, \$9,500. 717-597-9516.

1975 GMC 9500 8V71 with 13 ft. 1979 Stoltzfus Dry Lime Spreader Box. All air operated. Motor just majored. Box only used for lime, never fertilizer, excellent condition. Lanc. County. 717-786-4568 after 6:00 p.m.

For Sale - 1977 Ford, LN-800, 389, V-8, 5+2 speed, power steering, 10:00x20 rubber, 27,500 GVW, 22' Duralite van body. Will sell with or without body; 1977 International 1750, 466 diesel, 5+2 speed, power steering, 90:00x20 steel radials; 1977 International 1800, 446, V-8, gas, 5+2 speed, power steering, 10:00x20 tires; 1978 International 1800, 392, V-8, gas, 5+2 speed, power steering, 90:00x20 tires, extra long wheel base. 301-877-9889.

For Sale - 3 axle Lowboy trailer with ramps, 8x16 ft., \$950. Call 304-735-3352.

NEED CASH? We buy unwanted trucks and parts, scrap aluminum of any kind. Wrecked dumps, vans, flats, tank trailers, etc. Call 215-944-9871 (evenings).

70 International C01810A, 392, major overhaul March, 18' aluminum bed. All or will separate 717-786-1882.

'77 Jeep pickup, J-20, 4x4, 360, 4 BB headers, 5th wheel ball. Needs body work, \$2,500 or make offer. 717-786-1882.

For Sale - Utility Trailers, tilt bed 13'x76" flat deck, 1608 GVW. Comm. Axles. Good for two snowmobiles, wood or whatever. Includes wiring harness. Retail \$1395/close out \$895. (Only 7 left) Schuykill Cty, PA. 717-668-2706.

'74 Ford Pickup 3/4 ton with ladder and spouting racks. Call 717-786-7229.

Wanted to buy - Good used hay stacker, model 1002. Call 215-827-7687.



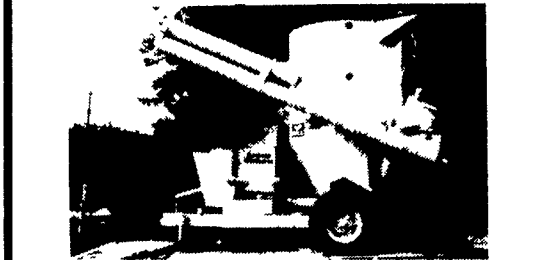
**71 Ford Tri Axle, 18 ft. Alum. Dump 270 Cummins, Jake runs good \$13,500**

**Curry Supply**  
Curryville, Pa.  
**814-793-2829**

**TEXTUREATOR TRADE-INS**



Used Feedmobiles \$5000 & Up



Roskamp AP PG918100 Ear Corn Crusher w/Scale Used For 50 Tons.....\$9800<sup>00</sup>

**Feedmobile Inc.**  
SALES • PARTS • SERVICE  
727 Furnace Hills Pike Litz, PA 17543  
(717) 626-2680

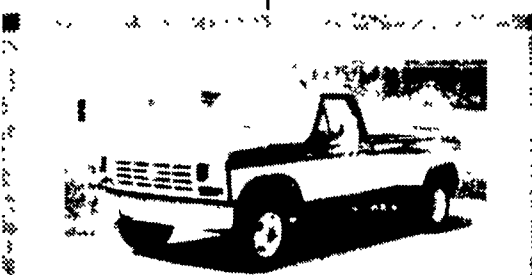
**WEST POINT TRAILERS**  
West Point, Pa.  
**215-699-8867**



(2) Stainless Steel Insulated Storage Tanks, Great for Fertilizers, one compartment 5400 Gallons. A Steal at \$1200.00 each



(1) 1974 T/M 40' Flat Bed Trailer. Sliding Tandem, 4' Bulkhead, 10x20 Tires, Oak Floor Only \$3200.00



**FOR SALE**  
83 Ford F350 dual wheel pickup 460, 4-speed, PS, PB, air, AM-FM, radial tires, 10,000 GVW with goose neck hookup, 8,000 miles, like new.

**\$11,900**  
**A&J AUTO SALES**  
Rt. 322, Ephrata  
**717-733-2873**

**YES!! ENGLE DOES MAKE IT EASIER!!**

1984 Ford LT-8000 — 225 H.P. Cat, 13 spd., 38,000 Rear, 16,000 Front, Ideal For Dump Truck - NEW!!

1983 Chev. C-30 Stake Body Truck — V-8, 4 spd., PS, PB, Dual Rear Wheels, 1-Owner, GREAT AROUND THE FARM!!

1983 Ford F-150 4x4 Pickup - V-8 AT, PS, PB, Lock-out Hubs, Tutone Paint - NICE TRUCK!!

1983 Chev. S-10 4x4 Pickup - 4 cyl., 4 spd., PS, PB, Long Bed, Only 15,000 Miles - MIGHTY MITE!!

1982 Chev. K-10 4x4 Pickup — V-8, 4 spd., PS, PB, Silverado, Cassette Stereo, Leather Buckets w/Console - BLACK BEAUTY!!

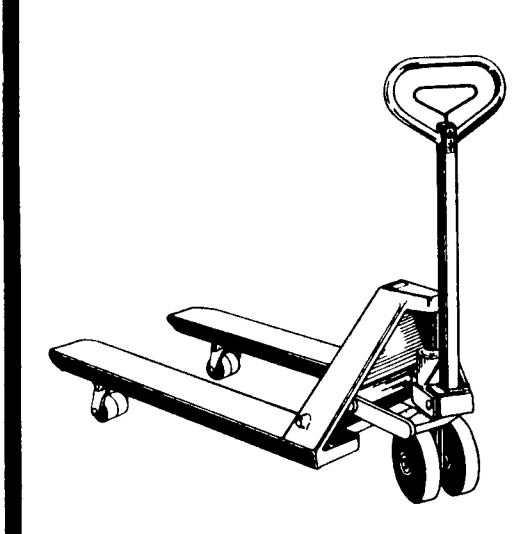
JEEPS — 79 CJ-7 Hardtop & 79 J-10 Pickup - CALL FOR DETAILS!!

1979 Dodge D-150 4x4 Pickup — V-8, 4 spd., PS, PB, Short Bed - HARD WORKER!!

In PA The Call's On Us 1-800-242-8075  
Out of State Call 1-717-692-4841

**ENGLE FORD, INC.**  
Rt. 147 North  
Millersburg, PA 17061

**Pallet Trucks**



**Next time you buy, think Power Pro.**

**HORST GROUP power pro equipment**

new holland, pa 17557 (717) 354-4241  
deptford, nj 08096 (609) 228-4702  
milroy, pa 17063 (717) 667-6504