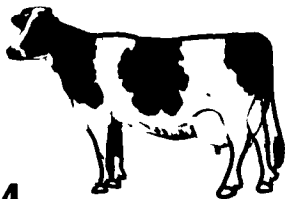


LANCHESTER CHRISTIAN SCHOOLS

HEIFER SALE

Guernsey Sales Pavilion
Route 30 & 896
Lancaster, PA



SATURDAY, SEPT. 29, 1984
11:00 A.M.

45 REGISTERED, GRADE BRED & YEARLING HEIFERS
(APPROX. 35 REGISTERED)
SEVERAL DUE NEAR SALE TIME

DAUGHTERS OF THE POPULAR SIRES SELLING:

Straight Pine Elevation Pete; Marshfield Elevation Tony; Ca-Lil Standout Cavalier; Sunny Craft Chief Spirit; Char Sam Elevation Pabst; Wagnercrest Ivanhoe Astronaut; Bend Mead Magic of Lin-Con; plus many other popular sires.

- 3 dams with records from 25,000 to 31,000
- Many more dams from 20,000 to 25,000
- 4 dams with records over 1,000 fat.
- Many more from dams over 800 fat.
- Many heifers from VG and G Plus dams

THESE TOP HEIFERS SELLING ALONG WITH MANY OTHER TOP PEDIGREE HEIFERS

1. A bred Cavalier out of an 87 pt Conductor with VG Mammary. Projected over 20,000 M, 740F in 305 day with 3.7% test. Bred to Wiseman.

—Calvin Beiler

2. An open Leprechaun Victorian from an 83 pt dam with first 5 records from 23,000 to 31,000 M and over 1,000 fat. GP Gr. D. over 20,000 M and 800 fat.

—Ivan Stoltzfus

3. A breeding age Sunnycraft Chief Spirit from GP Dam with records to 19,000 M and 900 fat, a consistent 4.6% tester. Gr.D. has records to 19,000 M and 790 fat. 4% test.

—Melvin Eby

4. A yearling Bend Mead Magic of Lin-Con from an 88 pt dam with 5 records from 22,000 to 24,000 M and 880 fat. 3.8% test. Gr. D. is GP with records to 29,000 M and 1,060 fat

—Don Hostetter

5. A breeding age Sexation from an 83 pt dam with records to 19,300 M and 723 fat. 3.7% test. VG Gr.D. with records to 22,900 M and 745 fat. GP Great Gr.D. with records to 21,690 M and 770 fat. 3.9% test.

—J. Wilmer Conrad

6. A bred Wagnercrest Ivanhoe Astronaut due in late December to Mil Nor from 84 pt dam with first 5 records from 20,000 to 23,000 M Plus up to 790 fat. VG - Gr.D. with records to 22,700 M and 783 fat.

—Earl Landis

7. A breeding age "Very" from GP Marvex Dam with records to 22,500 M and 810 fat. 3.7% test. 84 pt. Gr.D. with records to 16,000 M and 733 fat, a 4.5% tester.

—Emanuel Smucker

8. A Straight Pine Elevation Pete due about sale time to Willeda Citation R first 2 records to 17,700 M and 754 fat. 4.2% test from Ex. Gr.D. with records to 28,590 M and 1,358 fat 4.7% test.

—Harold Umble

9. A yearling Mars Tony from a first calf heifer with 16,000 M and 628 fat, with 3.9% test. 86 pt. Gr.D. with records to 19,000 M and 710 fat.

—Tim Kauffman

10. A yearling Ivagen Lone Ranger from dam with records to 21,800 M and 1,000 fat with 4.6% test.

—Lester Eby

11. 500 lb. Angus steer sired by Mr. Angus - 5th generation of AI breeding, good 4-H steer.

—Randy Bremer

Semen selling from popular bulls donated by various studs and individuals

ATLANTIC		
15H344	Basic	5 Units
8H096	Country Boy	5 Units
DAN RUSH ABS		
29H3064	Jason	3 Units
29H3195	Vic	3 Units
29H3392	Anticipation	5 Units
29H4000	Columbus	2 Units
TRAINER SEMEN SERVICE		
73H0177	Roybrook Tempo	2 Units
DALE HOSTETTER		
	Elevation	Units
SIRE POWER		
9H622	Stewart	10 Units
9H626	Saul	10 Units

An opportunity to invest in quality holstein heifers sponsored by

West Fallowfield, Linville Hill, and Locust Grove Mennonite Schools.

Sale Chairman— Calvin Beiler-(717) 442-4842

Auctioneers— Leon Kurtz, AU-000522-L

Steve Petersheim—Abe Dffenbach, JP.

Pedigrees— Henry Kettering

LARGE FOOD STAND BY THE REPRESENTED SCHOOLS!

This ad Sponsored by:

Nickel Mine Floor Covering, Inc.

Showroom located 1 mile East of Nickel Mines, R.D. 1, Christiana, PA-PH. 215-593-6061.

C.B. Hooper & Son, Inc. - Intercourse, PA

Pennfield Feeds - Lancaster, PA



Russel H. Hitz
John R. Hess

Dairy Sanitation and Agricultural Supplies

Dairy and Livestock Sales

HEIFER DISPERSAL

SAT., SEPTEMBER 29, 1984

12:00 Noon

Located in Juniata County, 1/2 mile south of Cross Keys on Route 35.

SELLING 50 HOLSTEIN HEIFERS
20 Registered-Balance Grades

All Calfood Vaccinated
All Animals from
Kline's Dairy Herd

16 are Bred-due for Late Fall.
12 Breeding Age Heifers.
Balance Yearling and Calves.

DHIA Records on all Dams of Heifers
All Heifers are A-1 Sired by Sire Power
Bulls used include:

Board Chairman, Jemini, Wiseman,
Matador, Legacy, Fury Ivan,
Lone Ranger, Tex, Trump,
Star Fire.

Records on Dams to over 20,000 lb. Milk
Certified & Accredited Herd
This is a Complete Dispersal of all Heifers-
Catalogs Day of Sale.

Also selling-U Model M.M. Tractor
Terms-Cash or Check on Day of Sale.
Not Responsible for Accidents.



Owners,
KARL KLINE & SON
R.D., East Waterford, Pa.
717-734-3883

77 PUREBRED GUERNSEYS

AT AUCTION

W.H. DREIBELBIS SONS INC.

COMPLETE DISPERSAL

THURSDAY, SEPT. 20, 1984

12:30 P.M.

At The Guernsey Breeders Sales Pavilion 6 Miles East Of Lancaster On Rt. 30.

**42 COWS-8 BRED HEIFERS-
27 OPEN HEIFERS**

**T.B. and Bangs Accredited-
Vaccinated-
Anaplasmosis Tested**

The Predominant Sires In The Herd Are:

Minnies Choice (11), Pendel Fayvors Alexander (10), Chedco Hollyhocks Darimost (7), Lone Palm T.H. Morgan (4) Western Glow Wistar (7) Also Represented Are Maverick, Telestar, Top Dollar, Wistar Fancy, Pollys Nance, Rolex, King Arthur And T.H. Jupiter.

The Herd Is Built Around Four Strong Cow Families - The "B" Family (15), "M" (12), "P" (10), "A" (9).

The Dreibelbis Herd Is Basically A Young Herd With Excellent Health. Ten Head Fresh Or Due With In 30 Days And Remainder Spread Evenly Over The Year.

The Dreibelbis Guernsey Herd Was Founded In 1929 In A Change Over From Holstein to Guernseys. In 1932 Harvey Dreibelbis One Of The Three Dreibelbis Brothers Traveled to Wisconsin Where He Purchased Ten Females And One Bull, When Harvey Went To Hominy Hill As Farm And Herd Manager His Brother Lloyd Took Over As Manager Of The Dreibelbis Herd.

With 55 Years Of Lloyd Breeding This Herd Under The Watchful Eye Of Harvey You Have The advantage Of Buying From a Herd That Is Long Established With Strong Cow Families.

Sales Headquarters:
Mill Stream Motor Lodge (717) 299-0931

Sale Managed By:

Pa. Guernsey Breeders Assoc.
Lee Yost, Bus, Manager
3107 Sollenberger Dr.
Chambersburg, Pa. 17201
Ph: (717)263-3367

The Merryman Company
John Merryman, Auctioneer
P.O. Box 566
Sparks, MD 21152
Ph: (301)771-4625

Public Auction Register

Closing Date Monday 5 00 P M
of each week's publication

THURSDAY NOVEMBER 15 Monthly Cow Sale at Mel Kolb Inc Maryland Farm Woodsboro MD 1/2 mile North West of Woodsboro on Rt 550 in Frederick Co

FRIDAY NOVEMBER 16 6 30 PM Public Auction of Feeder Cattle and Feeder Pigs Located at Keister's Middleburg Auction Sales Inc Rt 522 3 miles east of Middleburg PA 5

miles west of Selinsgrove PA Don & Walt Keister Owners Ray Long & Dave Imes Auctioneers

FRIDAY NOVEMBER 16 5 30 PM Gap Auction Antiques and Household Goods sold at every auction Located off Rt 41 Lancaster Turkey Hill Minit Market cross RR bridge Ira Stoltzfus & Son, Auctioneers



1044 Edom Road
Harrisonburg, Virginia 22801
Telephone (703) 434-4482 or
(Bill Joseph) (703) 350-2481

Special Fall Sales

49TH ANNUAL CALF SALE

THURS., OCTOBER 4, 1984 TIME: 7:30 P.M.

All Calves Beef Breeds

ROUND-UP SALE

WED., OCTOBER 24, 1984 TIME: 7:30 P.M.

Cattle of All Breeds and Weights
Yearlings, Heavy Feeders, Calves, Stock Bulls & Stock Cows.

ANNUAL HOLSTEIN SALE

WED., OCTOBER 31, 1984 TIME: 7:30 P.M.

Holstein & Dairy Cross Steers
All Weights

ROUND-UP SALE

WED., NOVEMBER 14, 1984 TIME: 7:30 P.M.

Cattle of All Breeds and Weights
Yearlings, Heavy Feeders, Calves, Stock Bulls & Stock Cows.

SATURDAY SALES 1:30 P.M.

Specializing In Feeder Cattle. We Will Have A Good Selection Throughout The Fall. Board Sales And Order Buying On Request.

PUBLIC AUCTION

Having decided to discontinue farming, we will sell the following without reserve on the farm located on Route 10 (next to Klings) 12 miles south of Dover, between Willowgrove & Petersburg, Del., (7 miles from Goldsboro, Md.) address of owners and sale is Wyoming, Delaware.

MONDAY, SEPTEMBER 24, 1984

At 11:00 A.M.

43 HOLSTEIN COWS & HEIFERS

This herd consists of 29 Holstein milk cows (8 are first calf heifers), many are fresh and in full flow of milk, 4 dry and close springers... 7 bred and close springing heifers, 7 open heifers... Artificial breeding by Atlantic Stud... DHIA records for the past 8 months... T.B. and bangs accredited & retested for sale, pregnancy checked...

FARM MACHINERY: CASE 1070 Diesel Tractor, CASE 870 Diesel tractor, Case 4x16 plows, JD 11' disc, Brillion 11' crow-foot cultipacker, JD 3 section drag harrow, Brillion 10' chisel plow, JOHN DEERE 7000 4 row no-till planter w/monitor, New Holland 479 haybine, NH 256 rake, NH #355 100 bu. grinder-mixer (1 yr.), NH 5' flail, NH super 717 corn chopper, NH #8 forage wagon, NH flat wagon, JD #336 hay baler, 3 flat wagons, NI wagon w/little giant funnell body, NI 2 row corn picker (pull type), JD 18 tyne grain drill w/seed attach., JD 38' PTO elevator, etc...

MILK EQUIP. & TANK: Mueller 535 gal. tank, Mueller auto-tank washer (1 yr.), Surge 2" stainless steel pipeline w/auto-washer, 4 Mini-orbit milkers, Surge Alamo 75 plus vacuum pump, SS wash vats... BROCK 4.4 TON FEED BIN w/agitator & unloading auger (1 yr)... Plus 10'x20' Wood corn crib, stanchions and dividers, hand tools, bench grinder, scrap metal and many other items, etc

LUNCH

LILLIAN V. & JERRY D. MOORE,

Owners
RD 2, Box 587, Wyoming,
Delaware

HARRY RUDNICK & SONS, INC.
Auctioneers of Galena, Md.

(301) 648-5601
(sale starts promptly at 11 am. misc. items, Farm equip., Milk equip. & Livestock)