

Public Auction Register

Closing Date - Monday, 5:00 P.M.
of each week's publication

SATURDAY OCTOBER 20 Public Auction of 48 Acre Farm, Household Goods, Antiques & Farm Equip
ment Located between Strasburg and Paradise along Espenshade Rd Amos G & Edna V Her-

shey, Owners Robert E & Jeffrey R Martin, Auctioneers

SATURDAY OCTOBER 20 8:30 AM Public Auction of Antiques, Tools, Clocks, Primitives, Glassware & Books Located in Gap, PA along Rt 30, 12 miles east of Lancaster Marie C Norris Estate Ronald D Funk, Auctioneers

Coins & Household Items Located at 80 King St, Northumberland, PA Mary G Steele Estate Dockey Dockey & Depen, Auctioneers

MONDAY OCTOBER 22 2 PM Public Auction of 168 Acre Farm Located in Tulpehocken Twp, Berks Co., 2 miles southeast of Bethel along Wintersville Rd Elam M & Mabel H Burkholder, Owners Paul E Martin & John D Stauffer Auctioneers

TUESDAY OCTOBER 23 7 PM Public sale of Feeder Cattle and Feeder Pigs at Carlisle Livestock Market exit 12 off I-81, 717-249-4511

WEDNESDAY OCTOBER 24 7:30 PM Public Auction of the Round Up Sale of Yearlings, Heavy Feeders, Calves, Stock Bulls and Stock Cows Located at The Shenandoah Valley Livestock Sales Inc., 1044 Edom Rd., Harrisonburg, VA 22801

PUBLIC AUCTION

For the estate of Floyd R. Anderson at 106 Curtis Ave., Woodcrest, Wilmington, DE. (one block from Maryland Ave. & Boxwood Rd.)

THUR. SEPT. 20, 1984
at 10 a.m.

FURNITURE & FURNISHINGS Slant desk w/ball & claw feet Victorian arm chairs RCA color TV Empire wood floor lamp loveseat oak china closet (bow front claw feet) oak sideboard round oak pedestal DR table (claw feet & 2 leaves) dining room chairs kitchen items mahogany double bedroom set wing back chairs sewing machine double bedroom set brass double bed oak chests oak dressers oak dressing table & mirror book shelves fine lamps (antique) oak pedestal oak stack book case pictures prints Gilbert brass & glass mantle clock oak library table old trunks Victrola cabinet oak side chairs Hi Fi console & record albums copper & brass buckets etc. crocks & earthenware gold band china & other fine china copper lustre figurines large sea shell collection yard tools elec. mower ladders etc.

LARGE COLLECTION OF ANTIQUE GLASS Pattern glass water glasses & goblets finger bowls compotes salts bottles vases paper weights cruets milk glass pressed & cut glass oil lamps pitchers various colors & unique pieces Over 1000 pieces of good quality

Inspection from 9 a.m. Terms cash or local approved checks Immediate removal.

RUDNICK ASSOCIATES, AUCTIONEERS
(302) 764-3347

PUBLIC SALE

OF THREE PROPERTIES

- #1 - 34 Acre Farm w/Frame House
- #2 - 36 Acre Farm w/Stone House
- #3 - Brick School House w/1 Acre

THURS. OCTOBER 4, 1984
at 12:00 noon

All properties loc. along River Road, just south of Highville, RD#2 Conestoga, Manor Twp., Lanc. Co. PA (along road leading from Safe Harbor to Highville).

Properties will be open for inspection: Sat's. Sept. 22 & 29 from 10:00 am until 2:00 p.m.

Sale by

JACOB B. BLEACHER ESTATE

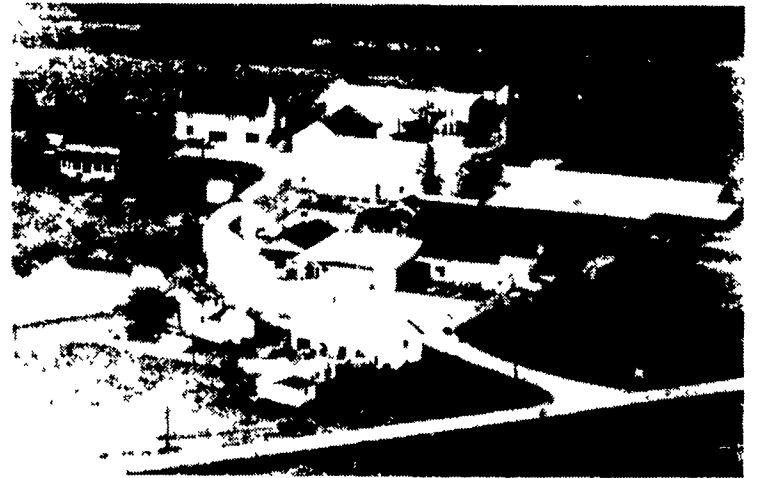
Robert L. Pfannebecker Atty.
HOWARD SHAUB 464-3541
Auctioneer (AU-000831-L)

ABSOLUTE AUCTION

140 ACRE DAIRY FARM, JUGGING FACILITIES
SLAUGHTER HOUSE, BUTCHER SHOP, RETAIL STORE
5 HARVESTORS, GRAIN BIN, TRACTORS, COMBINE
JUGGING & BUTCHER EQUIPMENT

FOR: PAUL BUTZ, Debtor-In-Possession
By the Order of the Bankruptcy Court
of the Eastern District of PA

AT: Valley View Farms
Schoolhouse Road, Allen Township
Northampton County, PA



Driving Instructions - From Int. 78 go No. on Rt. 987 to Rt. 329, W. on 329 to Rt. 892, No. on 892 to Mud Lane (Twp. Rd. 467), turn right on Mud Lane to Schoolhouse Rd., turn left on Schoolhouse Rd. (Twp. Rd. 474).

WEDNESDAY, SEPTEMBER 26, 1984
10:00 A.M.

Real Estate will be sold at 10:00 A.M.
Followed by Silos, then Equipment

REAL ESTATE consists of a frame Barn 42x90, Loafing Barn 150x100 w/120 free stalls, dbl. 6 Herringbone Milking Parlour w/clay auto. feeders, 66x66 Retail Store Area, Behlen metal building w/jugging operation & coolers, attached Slaughter House & Butcher Shop, Walk-in Cooler & Refrigerator, 5 Harvester Silos will be sold separately (four 20x60, one 20x30), 48x96 Drive-Thru Behlen Equipment Shed, 42x30 Storage Shed, 36x54 Storage Shed, Corn Crib, Fairbanks Drive-on Platform Scale 50,000 lb. cap. MAIN DWELLING - 2 1/2 sty. brick Farm House - 5 bedrooms, 2 baths, living rm., dining rm., lg. kitchen, open central stairway. 2ND HOUSE - Frame 4-BRS, 1 bath, LR, Eat-in Kitchen, Pantry. 2-UNIT APT. BUILDING - 4 bay concrete block Garage 30x60 w/2 apts. on 2nd fl., each having 2 BR, LR, Kit., Bath. MOBILE HOME - 12x60 Great Lakes w/a 12x15 addition. TERMS FOR REAL ESTATE - 10% down day of auction; settlement w/in 60 days. Very Attractive Financing Available for Qualified Buyer, call 215-723-1171 for details. INSPECTION - Mon., Sept. 17th, 12-2 P.M. & Tues. Sept. 25th, 12-2 P.M. or by appt.

FARM EQUIPMENT - Minneapolis Moline G1000 w/cab LP, Minn. Moline EZ, Minn. Moline U, Self-prop. Owatonna Haybine Custom 800-12 MG, Minn. Molene Combine Mod. 4296 4-row cornhead (gas), Minn. Moline 5-bottom plow, MM Transport Disc 12', JD 80 no till 4-row Corn Planter w/150 gal. tank, NH Mod. 78 Super Hayliner Baler, Fox Silage Cutter S-1F, 2 Allis Chalmers Power Feed Box Wagons, 8' Cultipacker, Hawk Side Delivery Manure Spreader, N.I. Manure Spreader, running gear, Olson Roto-Beater RD Flail Mower, Mayrath 25' Grain Elevator, 25' Goose Neck Cattle Trailer; Chev. Mod. 60 Truck w/hydraulic lift grain bed, misc. hardware, gen. farm equip. parts. SILOS & EQUIPMENT - 4 Harvestors 20x60, 1 Harvester 20x30, 3000 Bushel Black Sivals Bryson Grain Bin, Behlen Continuous Grain Dryer AN380, 1 Fox Silo Filler, Allis Chalmers Silo Filler, Gilioth Silo Unloader, 2 Hercules Unloader. BUTCHER EQUIPMENT - Scalding Tank, hog dehairer, 2 ton hoist, S.S. gut buggy, galv. freezer racks, Dayton scale mod. 1660, S.S. & S.S. lined cooking kettles. JUGGING & STORE EQUIPMENT - Cherry Burrel Mod. 72 auto. bottle capper, DeLaval short-time pasturizer P5-PC#2886, Gaulin Homogenizer 500 gal. per hr., DeLaval Control Center Disk, 100 gal. Mixing Tank, bottle washer, hand bottle capper, Creamery Packager 400 gal. S.S. storage tank, Mojonner 1000 gal. bulk tank, icemaker, 9 bottle display racks, metal bottle box, dollies, lg. quantity of glass gal. jugs, Kelvinator chest freezer 8' 3 lid, Bally chest freezer 6', wooden counter, greeting card display rack, misc. store items.

TERMS FOR SILOS & GRAIN BIN - 20% down day of auction; total payment due w/in 30 days, or before removal begins. Removal must be completed w/in 60 days. Full payment in cash or acceptable check due on day of auction on all other equipment. REQUEST DETAILED HAND-BILL.

Sanford A. Alderfer, Inc.

REAL ESTATE BROKERS and AUCTIONEERS

665 Harleyville Pike (Rt. 113)

Box 1, Harleyville PA 19438

215-723-1171 or 256-8892

PA NO. AU-001117-L

PUBLIC AUCTION

RENA M. STAMBAUGH ESTATE

5435 Bowers Road
Taneytown

2 FARMS; ANTIQUES
(FURNITURE, GLASSWARE);
HOUSEHOLD;
FARM MACHINERY

The Personal Representative of the Estate of Rena M. Stambaugh will sell at Public Auction at the above address on

SAT., SEPT. 22, 1984

9 A.M.

REAL ESTATE

at 1 P.M.

35.7 ACRE FARM

On the premises at 5435 Bowers Road, Taneytown (.8 miles west of Walnut Grove Road), all that parcel of land containing 35.67 acres, more or less, with almost 1400 feet of road frontage on both sides of Bowers Road, improved by a 2 1/2 story, 8 room frame dwelling house (covered with vinyl siding) consisting of a closed-in summer kitchen, dining room and kitchen with built-in cupboards, living room, one-half bath on first floor; 4 bedrooms, full bath, outside porch on second floor; full attic, basement; hot water baseboard heat. Out-buildings consist of large barn with drive-in entrance to hayloft, shelter for livestock, attached hog pen with corn crib and wood silo. Also chicken houses and implement sheds. Deed reference 160/111.

130 ACRE FARM

Immediately following the sale of the above farm, this farm will be offered at 4011 Fringer Road, Taneytown (south of Walnut Grove Road), consisting of 129.61 acres, more or less, with approximately 2,000 feet of road frontage on both sides of Fringer Road and 2,700 feet on one side of Fringer Road. Improvements include a 2 1/2 story, 9 room, frame dwelling house with bathroom (no central heating). Other buildings include a bank barn (40 feet by 90 feet) with three double driveways; a wagon shed with 2 corn cribs and a hog house with corn crib.

TERMS OF REAL ESTATE: \$10,000.00 cash or acceptable check at time of sale, balance upon settlement within 30 days. Interest will be charged at the rate of 12 percent per annum from date of sale to date of settlement. All costs of transfer to be at purchaser's expense; taxes and other charges to be adjusted to date of sale. Survey, if desired, at Buyer's expense. Seller reserves the right to reject any and all bids.

NOTE: These properties will be open for inspection on September 15, from 3:00 P.M. to 5:00 P.M. For copies of plats, contact the undersigned attorney.

Personal Representative,

PHYLLIS K. STAMBAUGH

T. Bryan McIntire
McIntire & Johnson, Attorneys
11 North Court Street
Westminster, Maryland 21157
848-8888 876-1234
Auctioneer, Calvin Amoss
756-6784

PUBLIC AUCTION

FURNISHINGS
TOOLS — ANTIQUES
HOUSEWARES

WEDNESDAY, SEPT. 19th, 1984
10 A.M.

1206 Osborne Rd., Downingtown

Signs will direct you to the sale from Rt. 322, Between Downingtown and Guthrieville.

TOOLS FIRST: Dewalt Radial arm saw on cabinet; attachments sold separately. Craftsman drill press, Simplicity snowblower-like new. Yard and Garden tools, mowers. Craftsman meter box. 10 ga. single Barrel shot gun. J. Stevens little scout 22, Octagon Barrel 22. Air compressor, sausage stuffer, misc. building materials, Lg. oak panel door, wire, lg. fan, propane tank, fishing equip. airtight wood stove by Keesey. Riding mower and 4 Rotary mowers.

FURNITURE AND APPLIANCES right after tools: All in excellent shape — Hotpoint automatic washer and dryer. Kitchen set w/6 chairs. Round maple extension table and maple hutch. Locally crafted Hepplewhite style desk w/many compartments. Kenmore microwave, Humidifier, Huge steamer trunk w/interior. Kenmore polisher and shampooer. Elec. sewing machine. 1942 Birch H Bedroom suite. 25 inch RCA XL 100 color T.V. set. Also Zenith B & W set. Fine tall case clock with chimes by Frank Knauer. Maple end table w/spice boxes. CB, scanner, pie crust table, Small size G.E. freezer, Sample Fire Place mantel w/doors complete, Intricate folding leather inlaid gaming table, Salesman's sample water pump. Platform rocker in tapestry. New oak curved china closet. Glass front case.

Golden oak wash stand w/towel bar. Dovetailed cherry drop leaf table. Fine brass bed - complete with like new bedding. Tall chest of drawers, two Seth Thomas mantel clocks. School house clock. Dry Sink, Patchwork quilts, Colorful Afghan, Walnut New England commode. Zenith floor model radio, Enterprise Sausage stuffer, Oak wash stand, Compo doll w/cloth body. Columbia table model phonograph, Maple and Mahogany Humidor. Black mantel clock. Tin Royal crown cooler, Two embossed leather game pictures in oak frames. Antique Wilton type Oriental rug. Foreign coins and Indian heads.

Housewares and Smaller Items later: Everything nice and clean — Calendar and Souvenir plates, pressed pattern glass, fancy bric-A brac, ornamental china, cameras, covers and drapes, bowl and pitcher set, Avon plates and bottles, crock pot, Ansonia desk clock on cherub pedestal. Elec. bun warmer, various pretty lamps, dining room suite, coffee grinders, blue decorated crock, milk cans, lantern, Bed spreads, fringed robe, peanut lamp, ship clock, sod irons, ironstone, butter bowl, records, pictures, punch bowl set. Other items including cookware, gadgets & utensils. Bean bottle touring car. Stuffed lamps.

By order of

MR. & MRS. JAMES STEGANIUS

You will enjoy this sale of Antiques, Tools and Good, Clean Furniture and Appliances.

TED MAURER (AU-000593)

Successful Auction Management

POTTSTOWN and GILBERTSVILLE

323-1573 or 367-5024