

**Public Auction Register**Closing Date Monday 5 00 P M  
of each week's publicationFRIDAY OCTOBER 5 7 Holstein Heifer Sale  
PM Public Auction of a Located at Keister's Mid**PUBLIC SALE****FRI. SEPT. 21, 1984**

at 8:30 A.M.

Of the late Chester M. Craley, Felton 2, Pa. Located along the New Bridgeville Rd. Approx. 6 miles southeast of Red Lion, Pa. From I 83 take Rt. 74 south thru Red Lion, 5 miles to N. B. Rd. or Rt. 74 north of Brogue 3 miles to N.B. Rd turn east one mile to sale. From Rt. 30 at the Wrightsville exit follow south to East Prospect - Craley to New Bridgeville, 2 miles west to sale. Watch for sale signs. Chanceford Twp., York Co., Pa.

**TRUCKS**

1969 GMC 6500 series V6-overhauled 2 yrs ago - air brakes - 16' grain bed - good 900/20 tires, 1951 GMC T tag truck - wood bed w/cattle racks, 8' racks for pick-up.

**TRACTORS & FARM MACHINERY**

185 Allis Chalmers Diesel - 588 hrs. - wide front - suitcase weights - 3 pt. ht. - good tires, 235 Massey Ferguson - 690 hrs. - good tires, 700 Job Master loader to fit M.F. w/hyd. bucket, 2 Allis Chalmers W D 45 w/hyd. one w/wide front end - tires fair, 310 Allis Chalmers riding mower - elec. lift w/42" mower, A.C. 2000 series 4 base semi-mount 16" bottoms plow, A.C. 3 base 14" bottom mounted plows, Ford 3 pt. 2 base plow, J.D. #25 combine w/motor - Hume real, New Holland #451 3 pt. tractor mower, N.H. #273 baler w/bale thrower, New Idea #323 single row corn picker, A.C. 2 row mounted picker, A.C. 3 pt. 2 row corn planter, A.C. 10' transport disc harrow, Ford 3 pt. 7 teeth chisel plow, 3 section spring harrow w/new reversible teeth, New Idea #213 manure spreader, Case manure spreader on rubber, Ezee Flow fert. spreader, New Idea hay crimper, Case side delivery rake, Piech vacuum silo blower w/Leroy motor on trailer, Oliver 13 disc grain drill; 11' double caltipacker, 3 rubber tire wagons 16' beds w/2' side boards & bale racks 2 equip. w/hoist, 30' Cross elevator w/1 h. elec. motor, 15' alum. elevator w/motor, corn drag w/1/2h. elec. motor, Speedy roto beater w/shoot, Ford 3 pt. cultivators, hay tetter, Allied heavy duty 9' snow blade & frame also angles, 7' snow plow w/frame, Kims post hole digger, 3 pt. scraper blade, Garber clover seeder 3 pt. ht. - pto, IHC #6 hammer mill, hill side hitch, mounted weed sprayer, Farquhar one row potato planter, potato plow, shovel & walking plow, 2 hole & 1 hole corn shellers, range house, roto tiller, some silo boards, baler twine, 2 Hinman milk machines, elec. cow clippers, 6 hole hog feeder, hog trough, fence wire, iron posts, large elec. chicken brooder, chicken coops & feeders, snow fence, fence charger, 30' double belt, platform scales, steelyards, 55 gal. drums, 5 gal. plastic buckets, rubber tire wheel barrow, wooden wheel barrow, 36" & 24' extension ladders, step ladder, trussels, wood pulley, single & double trees & tongues, buggy tongue, bag truck, mounted saw buck, tractor & truck chains, tires, forks & shovels.

**GARAGE TOOLS**

Ingersol Rand #30 air compressor 2 stage w/large tank, 250 amp elec. welder, Graco air grease gun, pumps for heavy oil, 10" Craftman table saw w/1 h.p. double shaft motor, large hoist frame to lift engines, 1/2 ton chain hoist, Homalite XL 20" chain saw, wedges, Marquette 100 amp 6 & 12 V. battery charger, Binks #7 spray gun, black smith drill press, anvil, forge & tuns, pipe vice - cutter - threaders, bolt cutters, chain repair tool, solder irons, 1/4 & 1/2 elec. drills, tap & die sets, creepers, belts & elec. cords, elec. motors, tire spreader, log chains & binders, wood augers, canvasses, block & fall, lots of socket & wrench sets, hand & garden tools, all kind of misc. tools.

Not responsible for accidents.

Terms: CASH or APPROVED CHECK

AUCT. NOTE: Most equipment like new & well maintained. Order of sale wagon items & garage tools until 12:00 Noon, trucks & tractors, farm machinery.

**MRS. CHESTER M. CRALEY**

Felton 2, Pa.

Ph. 717-927-6204

Reynold Burke

Auct. #AU000117-L

Ph. 717-244-8702

Refreshments served

dleburg Auction Sales, Inc. Rt 522, 3 miles East of Middleburg, PA., 5 miles west of Selinsgrove, PA Don & Walt Keister, Ray Long & Dave Imes, Auctioneers

FRIDAY OCTOBER 5 7 PM Public Auction Special Graded Feeder Calf Consignment Sale Located 4 miles east of Washington, PA on Rt 136, Exit 8 off I 70 Eighty-Four Auction Sales, Inc., Auctioneers

SAT., OCT. 6 - 9:30 AM sale of real estate and personal property at 38 E. Lincoln Ave., Lititz. Sale by Amanda & Mable Meiley; E.M. Murry Assoc., auctioneers

SATURDAY OCTOBER 6 Public Auction 10 AM Corner of Lykens and Mountain Rds in Mifflin Township, Dauphin Co., PA, 2nd farm west of Kolva's Sawmill, 1 mile

north of Berrysburg, 36 miles NE of Harr 64 acre farm & Farm Equip. Floyd E. Stine, Peter I. Stine & Woodrow W. Stine, Owners Mike Deibert, Auctioneer George Deibert, Realtor, Auctioneer

SATURDAY OCTOBER 6 Public Sale of Antiques at 9 AM Located Off Rt 30 at Hallam Exit, go south to Rt 462, continue straight on Freysville Rd, go through underpass, 1st farm on right in lane Estate of Ruth Stoner Brinkman Blaine & Nevin Rentzel, Auctioneers

SATURDAY OCTOBER 6 - Public Auction of Real Estate Located 1 mile north of White Horse, PA Wilms & Sara Stoltzfoos, Owners Steve Peter sheim, Auctioneer

SATURDAY OCTOBER 6 - 8:30 AM Public Auction of Real Estate and 100 yrs Untouched

Household Goods In cludes Antiques Located 7 miles west of York, along Rt 30 in the village of Thomasville, Jackson Twp, York Co, PA Elizabeth E. Wehler, Owner Clair R Slaybaugh, Auctioneer

SATURDAY OCTOBER 6 9 30 AM Public Auction of Livestock, Dairy Equipment, Horses, Machinery and some Furniture Located in Snyder Co, 4 miles east of New Berlin, PA, 1 mile east of Cheese Maker on Co Line Rd Sam Yoder, Owner Mark Glick, Auctioneer

SATURDAY OCTOBER 6 6 30 PM Public Auction of the "Where The Beef IS" Maryland Polled Hereford Assoc 14th Annual Red, White & Blue Show and Sale Selling Cows, Bred Heifers, Open Heifers, & Heifer Calves Located at the Beef Barn, Frederick Fairgrounds,

Frederick, MD Col Dave Leonard, Auctioneer

SATURDAY OCTOBER 6 Public Consignment Auction of Farm and Industrial Tractors and Equipment Located at the corners of Rt 38 and 38B, Newark Valley, NY Goodrich Auction Service Inc 607 642-8688

SATURDAY OCTOBER 6 9 30 AM Public Auction of Real Estate, Clocks, Antiques, Furniture & Glassware Located at 110 Virginia Ave., Coatesville, PA off Rt 30 Thomas F. Warden, Owner Ronald D Funk, Auctioneers

MONDAY OCTOBER 8 1 PM Public Auction of Real Estate (2 Properties Zoned Commercial), Antiques, Household Goods, Guns & Coins Located along Rt 272 about 2 miles south of Willow Street, Pequea Twp,

Lanc Co, PA Mr & Mrs William Weigand, Owners Howard Shaub, Auctioneer

TUESDAY OCTOBER 9 7 PM Public Sale of Feeder Cattle and Feeder Pigs at Carlisle Livestock Market exit 12 off I 81 717 249 4511

WEDNESDAY OCTOBER 10 12 Noon Public Auction of the Western PA Sale of Stars Located in Butler, PA

THURSDAY OCTOBER 11 1 PM Public Auction of a 54 Acre Farm Located 1 mile west of Blue Ball off Rt 322 John A & Anna W Zimmerman, Owners Nevin Martin & Lewis Groff, Auctioneers

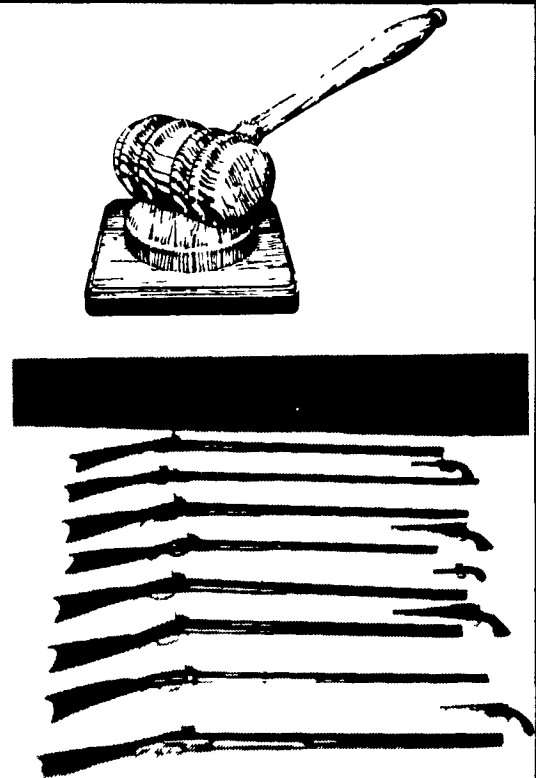
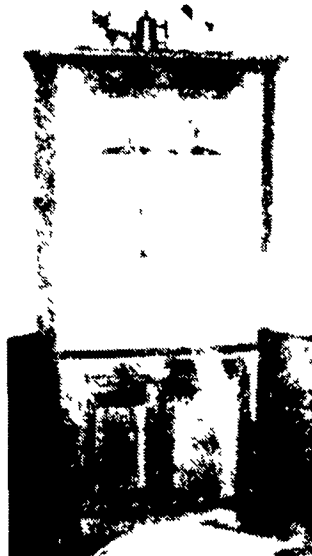
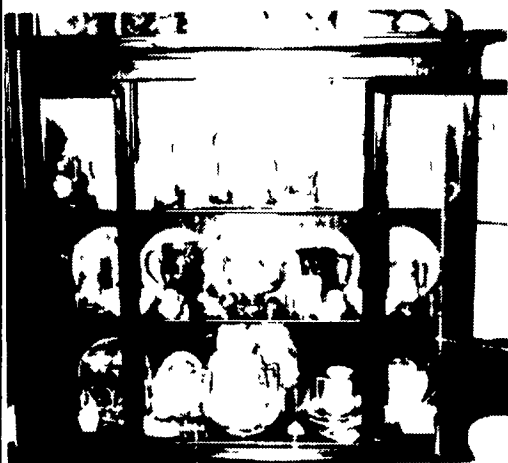
FRIDAY OCTOBER 12 1 30 PM Public Auction of State Grade Consignor Feeder Pig Sale Located at the Carlisle Livestock Market, Inc

## PUBLIC AUCTION

### SATURDAY, SEPTEMBER 22, 1984

AT 8:30 A.M.

Located 5 1/2 miles west of Selinsgrove, Pa. at second farm, 1/2 mile west of Freeburg, Pa. in Snyder County on Route #35.

**ANTIQUES—HOUSEHOLD—COLLECTIBLES**

2 Piece 12-Pane Corner Cupboard with 2 Doors and 2 Drawers (nice); Rare Collection of Majolica including Pieces Such As Seaweed Design Tea Pot, Corn on the Cob Beverage Pitchers, Milk Pitcher, Creamer, Plate with Dog, Plates with Dog and Deer, Wreath Dish, and Much More of the Majolica Collection; (2) Depression Era Bedroom Suits; 2 Piece Desk with Highback Cupboard; (6) Cane Bottom Chairs (cane missing); (6) Plank Bottom Chairs; New Haven 8 Day Mantel Clock; 8 Day Ingraham Mantel Clock; 8 Day Steeple Mantel Clock; Brass Bucket with 3 Feet and 2 Lions' Heads with Rings in Mouth; Buggy Robe; Horse Blankets; (2) Oak Rockers; Walnut Gun Cabinet for 6 with Drawers; Approximately 14 Quilts in Nice Condition; Treadle Sewing Machine; 1-Drawer, 1-Door Washstand (painted); Small Blanket Chest; Bamboo Stand; Small 2-Door, 1 Piece Corner Cupboard; Benington Pitcher with Facial Figure; Clear Glass Bulldog with Erect Ears and Collar; Collection of Small Trinket Dogs; Collection of 30 Arrowheads Mounted on Board from Various Parts of the U.S.; Pictures and Frames; Cast Iron Lion and Rooster Banks; Wooden Advertisement Boxes; Bowls, Set of 6 Saucers, Cup with Saucer and Shoe, All Market Germany; Adamsware; Pension Rose Plate; Finger Lamp; Cut and Pressed Glass; (3) Glass Cake Stands; Graniteware; Stereoptic Viewer and Cards; Ironstone Pieces of All Sorts; (6) Spatterware Matching Plates; Blue Blown Glass Vase; Milk Glass Rabbit on Nest; Set of 6 England Cups and Saucers; Assorted Old Books; Wooden Butter Bowl; Flat Irons; Sad Irons; Apple Peeler; Various Crockers; Cast Fry Pans; Shoe Lathe; Small 4 Drawer Card file; (2) 2 Drawer File Cabinets; Modern Breakfast Set with 4 Chairs and 1 Board; Wesco Air Conditioner; Large Portable Kero-Sun Heater (like new); Kneehole Desk; Glider; Electrolux Sweeper with Attachments; Eureka Sweeper; Hoover Upright Sweeper; Various Living Room Furniture; Many Wooden Stands; Upholstered Recliner; Exercise Bike; Westinghouse Fan and Stand; and Many More Items.

**UNUSUAL COLLECTION OF KENTUCKY LONG RIFLES (Percussion)**

1) Over and Under with Revolving Barrels, Set Trigger, Richly Inlaid and Signed A. Mitchell; 2) Over and Under Rifle Shotgun, Patch Box, 20 gal. 50 cal.; 3) Bench Rifle believed to be made by Laudenslager man in Snyder County; 4) 50 cal. Joseph Manton Barly Maple with Set Trigger and Richly Inlaid; 5) Riddler Rifle, Richly Inlaid; 6) 50 cal. Ridder Rifle; 7) Williams with Extra Long Barrel; 8) Rashmore.

**MISCELLANEOUS ANTIQUE AND MODERN DAY GUNS**

9) D&H Saddle Gun Percussion with Set Trigger (stock has been repaired); 10) U.S. Springfield Rifle 45-70 Model 1873; 11) Richards 12 ga. Double Barrel with Hammers (unusual grade); 12) M. Moore & Co. Double Barrel Percussion; 13) Large Trap Door Breech Loader; 14) Stevens 22 Favorite Single Shot; 15) 12 ga. Stevens Single Shot Pat. 1900; 16) Remington 12 ga. Semi-Automatic Shotgun; 17) Winchester 32 Special Pre-64 Model #94; 18) Harrington & Richardson 22 Bolt Action with Clip Model #250; 19) Remington 12 ga. Double Barrel with Hammers; 20) Mossberg 410 Belt Action with 3 Inch Chamber.

**PISTOLS**

21) Eli Whitney Percussion Revolver; 22) Remington 44 cal. Percussion Revolver; 23) Merwin & Hulbert & Co. 38 cal.; 24) Johnson Arms & Cycle Works 32 cal.

Also Other Unlisted Guns and Swords; Various Cap and Ball Single Shot Pistols; Bulletin Mold Markers; Repairing Tool for Muzzleloader; Various Air Guns; Powder Horns; Powder Measures and Miscellaneous.

**LAWN, BUTCHER AND FARM RELATED ITEMS**

Massey Ferguson 8 h.p. No. 85 Lawn Tractor (good condition); Toro Model S200 Electric Start Snow Blower (like new); 22' Push Power Mower; (3) Butcher Kettles with Handles; 3 Prong Butcher Fork; Butcher Ladles; Hog Scrapers; Lard Press; Oliver Walking Plow; Potato Plow marked T.L. Snyder, Pillow, Pa.; 40 ft. Wooden Extension Ladder; 20 ft. Wooden Extension Ladder; Milk Cans; Fence Posts; Antique Hydraulic Ram (to pump water from spring); (2) Rope and Tackle Hoists; Canvas Tarp; Ground Scoop; Woodburning and Electric Brooders; 1 Horse Cultivator; Buck Saw with 2 Blades; Wooden Wheelbarrow with Wooden Wheel; Pull Type Row Marker; Log Chains; Oak Planks; App (6) 1 1/2" x 14" x 16' Pine Boards; Garden Tools; Various Hand Tools; Scythes; Anvil; Vise; Taps and Dies; Socket Set; 1/2" Craftsman Drill; and More Items.

Terms: Cash or Good PA. Check - No Out-of-State Checks.

Certified &amp; Travelers Checks Accepted

GUNS TO BE SOLD AT 11:00 A.M.

Owner:

**RAYMOND J. KERSTETTER**

Auctioneer: Dale L. Longacre (717) 374-4215

#AU-001899-L

Apprentice Auctioneer: Roger A. Lauver #AU-001424-L

LUNCH STAND