

Deanna Sparling, left, and Lori Beardsler, right, showed the Holstein junior champions at the Bradford County 4-H Dairy Roundup. With them is Bradford County Dairy Princess Wendy LaMont.



Brown Swiss champions Karen Cole, left, and Donald Cole, right, pose with Dairy Princess Diane Finnerty.

## Bradford 4-H'ers hold dairy roundup

TOWANDA — Bradford County 4-H Dairy Club Members recently held their 4-H Dairy Roundup at the Troy Fairgrounds. Judging was done on the type or merit of the dairy animal plus fitting and showmanship of the 4-H member. Results are as follows:

### GRAND CHAMPIONS

Brown Swiss - Karen Cole; Guernsey - Stacey Brackman; Jersey - Rodney Chapman; Holstein - Terri Packard.

### RESERVE GRAND CHAMPIONS

Brown Swiss - Donald Cole; Guernsey - Michelle Wright; Jersey - Teresa Murphy; Holstein - Jeremy Braund.

### JUNIOR CHAMPIONS

Ayrshire - Jenifer Kerrick; Brown Swiss - Ellen Cole; Guernsey - Stacey Brackman; Jersey - Stephen Shafer; Holstein - Deanna Sparling.

### RESERVE JUNIOR CHAMPIONS

Brown Swiss - Karen Cole; Guernsey - Chris Brackman; Jersey - Tracy Ann Cook; Holstein - Lori Beardslee.

Blue Ribbon Class Winners Were:

### BROWN SWISS

Junior Calf - Karen Cole; Intermediate Calf - Donald Cole;

Senior Calf - Ellen Cole; Junior Yearling - Elaine Inturrisi; Junior 2 yr. old - Karen Cole; 4 year old - Done Cole.

### GUERNSEY

Junior Yearling - Chris

Brackman, Jon Brackman, Sharla Wright; Senior Yearling - Stacey Brackman, Michelle Wright; 4 year old - Stacey Brackman; 5 year old - Michelle Wright.

### JERSEY

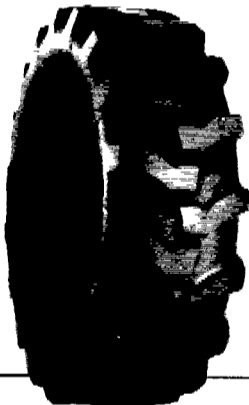
Junior Calf - Traci Ann Cook, Andrew Sieker; Intermediate Calf - Andrew Harding; Senior Calf - Terry Shafer Jr., Rodney Chapman; Junior Yearling - Stephen

Shafer III, Joey Bixby, Janie Cole; Senior Yearling - David Andrus; Junior 2 yr. old - Teresa Murphy, Terry Shafer Jr.; Senior 2 yr. old - Rodney Chapman; 3 year old - (Turn to Page B23)

## MUMMAU'S AG PROGRESS TIRE RO



### Loader-Dozer

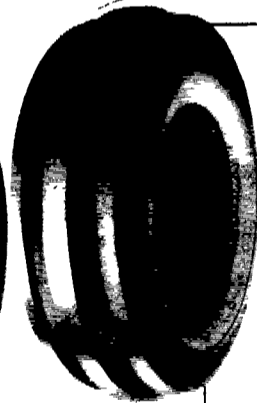


11Lx15 8 ply	\$80.00
11Lx16 8 ply	\$92.00
11Lx16 10 ply	\$98.00
750 800x16 10 ply	\$80.00
11Lx16 12 ply	\$130.00
145 75 16 1 10 ply	\$225.00

### Contractor F-3



### Front Tractor



400 12	\$22.00
400 15	\$24.00
500 15	\$31.00
550 16, 4 ply	\$33.00
550-16, 6 ply	\$36.00
600 16, 4 ply	\$37.00
600 16, 6 ply	\$41.00
650 16, 6 ply	\$42.00
75L 15, 6 ply	\$50.00
750 16 8 ply	\$54.00
750 16, 6 ply	\$50.00
750 18, 6 ply	\$64.00
9 5L 15, 6 ply	\$55.00
9 5L-15, 8 ply	\$60.00
1000-16, 6 ply	\$80.00
11Lx15, 8 ply	\$75.00
1100 16 8 ply	\$110.00
14L 16 1 8 ply	\$160.00

### ★ TUBELESS ★

16 9x24 8 ply -	\$265.00
16 9x24 10 ply -	\$330.00
17 5Lx24 6 ply -	\$240.00
17 5x24 8 ply -	\$270.00
15 5x25 12 ply -	\$320.00
17 5x25 12 ply -	\$445.00

### ★ TUBE TYPE ★

14 9x24 6 ply -	\$200.00
14 9x24 8 ply -	\$220.00
16 9x24 6 ply -	\$220.00
16.9x24 8 ply -	\$235.00
16.9x24 10 ply -	\$280.00
17 5Lx24 8 ply -	\$240.00
16.9x28 8 ply -	\$260.00
18.4x28 10 ply -	\$340.00
20 5x25 12 ply -	Call For Quote
23 5x25 16 ply -	Call For Quote
1300x24 10 ply -	\$225.00
1300x24 12 ply -	\$245.00
1400x24 10 ply -	\$255.00
1400x24 12 ply -	\$280.00

1100x16 12 ply tube type 135.00

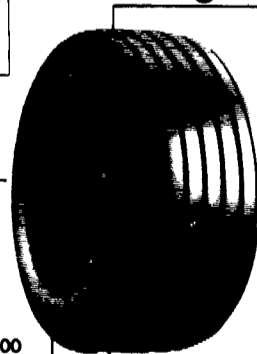
1100x16 12 ply tubeless 150.00

### Skid Loader Tires

700x15 6 ply	\$65.00
750x15 6 ply	\$68.00
10 16 5 6 ply	\$80.00
12 16 5 8 ply	\$120.00
Steel Shield 10 16 5 6 ply	\$95.00

Above Tires Shipped To You FREE

### Wagon Tires



26 1200x12 4 ply	49.00
8 5Lx14 6 ply	41.00
9 5Lx14 6 ply	44.00
9 5Lx14 8 ply	49.50
11Lx14 6 ply	49.00
9 5Lx15 6 ply	42.00
9 5Lx15 8 ply	44.00
11Lx15 6 ply	43.00
11Lx15 8 ply	47.00

We Ship To You UPS! • No Charge

11Lx15 8 ply tubeless	\$50.00
11Lx16 8 ply	\$58.00
11Lx16 10 ply tubeless	\$74.00
12 5Lx15 10 ply	\$75.00
12 5Lx16 14 ply	\$85.00
14Lx16 1 12 ply	\$140.00
16 5Lx16 1 10 ply tubeless	\$160.00

\$5.00 OFF ABOVE WAGON TIRE PRICES



## All-Plant LIQUID PLANT FOOD

### 9-18-9 PLUS OTHERS!

- Contains 100% white ortho phosphoric acid. Made in USA.
- Non-corrosive. Won't settle.
- Top quality. Excellent service.
- Newest equipment.
- Financially sound... and growing!

### Big Demand Requires More Distributors!

- I sell to farmers. How do I become your distributor?
- I'm a farmer. What's the price? Where do I get it?

CALL or SEND FOR FACTS: Phone: 419-962-4707

ALL-PLANT LIQUID PLANT FOOD, INC. 821 State Rd. 511 N., RFD 3, Ashland, Ohio 44805

8 3x24	\$95.00
9 5x24	112.00
14 9x24 6 ply	195.00
16 9x24 6 ply	210.00
18 4x16 1 6 ply	245.00
18 4x26 6 ply	340.00
11 2x28 4 ply	152.00
13 6x28 6 ply	225.00

Used Grass Tires In Our Stock

Ask About Our 4 Year Guarantee On Rear Tires Strongest In The Country

### We Install Tires On Your Farm

- Centre Hall • Williamsport
- Sunbury • Allentown
- North Penna. • New Jersey
- Northern Maryland