

Public Auction Register

Closing Date Monday 5:00 P.M.
of each week's publication

SATURDAY OCTOBER 27
11 AM Public Auction of
Horses Located at
Keister's Middleburg Auc-
tion Sales Inc., Rt 522, 3

miles east of Middleburg,
PA, 5 miles west of Selin-
grove, PA Don & Walt
Keister, Owners Ray
Long & Dave Imes, Auc-
tioneers

SATURDAY OCTOBER 27
11 AM Public Auction of
Personal Property and
Valuable Real Estate 119
Acre farm with never fail-
ing stream Plus 24 acres
woodland tract Located in
Millcreek Twp
Lebanon Co PA Along
the Stricklerstown Rd
between Cocalico and
Newmanstown PA Ralph
L Eberly Estate Paul A
Curt W & Hugh L Eberly
Administrators Clayton
C Kleinfelter & Sons Auc-
tioneers

TUESDAY OCTOBER 30
7 PM Public Sale of
Feeder Cattle and Feeder
Pigs at Carlisle Livestock
Market exit 12 181
717 249 4511

WEDNESDAY OCTOBER
31 12 Noon Annual Dairy

Show and Sale at New
Holland Sales Stables,
Inc 12 miles East of Lan-
caster off Rt 23 in New
Holland, PA Abe Ditten-
bach Manager

NOVEMBER

FRIDAY NOVEMBER 2
Monthly Cow Sale at Mel
Kolb, Inc Lancaster
Farm, 2220 Dairy Road
Lancaster, PA

FRIDAY NOVEMBER 2 6
PM Public Auction of a
Special Heifer Sale Sell-
ing 250 300 Heifers
Some registered Open,
Bred and Springing
Heifers Located at the
Belleville Livestock
Market, Belleville, PA
Mark Glick Auctioneer

FRIDAY NOVEMBER 2
5 30 PM Gap Auction An-
tiques and Household
Goods sold at every auc-
tion Located off Rt 41,
Lancaster Turkey Hill
Minit Market, cross RR
bridge Ira Stoltzfus &
Son Auctioneers

TUESDAY NOVEMBER 6
7 30 PM Public Auction
Feeder sale with Weekly
Sale Located at the
Penns Valley Livestock
Auction, Centre Hall PA
Ron Gilligan, Auctioneer

FRIDAY NOVEMBER 9
9 00 AM Public Sale of
Farm Equipment at New
Holland Sales Stable Inc
Located 12 miles East of
Lancaster off Rt 23 in
New Holland, PA Abe Dif-
tenbach, Manager

FRIDAY NOVEMBER 9
1 30 PM Public Auction of
State Grade Consignor
Feeder Pig Sale Located
at the Carlisle Livestock
Market, Inc

FRIDAY NOVEMBER 9
5 30 PM Gap Auction An-
tiques and Household
Goods sold at every auc-
tion Located off Rt 41,
Lancaster Turkey Hill

Minit Market
bridge, Ira Stoltzfus &
Son, Auctioneers

SATURDAY
NOVEMBER 10 9 AM
Public Auction of Valuable
Farm, Farm Machinery
Vehicles, Livestock & Per-
sonal Property Located
along Rt 124 1/4 mile
north of Craley, PA in
lower Windsor Twp R D
1 Wrightsville, PA York
Co Mr & Mrs Ross
Pickel, Owners Jacob A
& Brian L Gilbert, Auc-
tioneers

THURSDAY NOVEMBER
15 Monthly Cow Sale at
Mel Kolb, Inc, Maryland
Farm, Woodsboro, MD, 1/2
mile North West of
Woodsboro on Rt 550 in
Frederick Co

FRIDAY NOVEMBER 16
6 30 PM Public Auction of
Feeder Cattle and Feeder
Pigs Located at Keister's
Middleburg Auction Sales,
Inc Rt 522, 3 miles east
of Middleburg, PA, 5
miles west of Selinsgrove
PA Don & Walt Keister
Owners Ray Long & Dave
Imes Auctioneers

FRIDAY NOVEMBER 16
5 30 PM Gap Auction An-
tiques and Household
Goods sold at every auc-
tion Located off Rt 41
Lancaster Turkey Hill
Minit Market cross RR
bridge Ira Stoltzfus &
Son Auctioneers

FRIDAY NOVEMBER 16
10 AM Public Auction of
Farm Machinery 1 PM
Sale of Valuable 105 Acre
Dairy Farm Real Estate
Located in East Drumore
Twp approx 18 miles
south of Lancaster on Rt
272 East to Tanglewood
Golf Course East on
Scotland Rd to Center
Rd Turn right on Conow-
ingo Rd First lane on
right Or from Lancaster
Rt 222 south of Quar-
ryville, West on Scotland
Rd left on Conowingo Rd

Dairy and Livestock Sales

1 1/2 miles to farm on right
Pine Valley Farms, Glenn
& Dave Hess, Owners
Kreider & Kline Auc-
tioneers

SATURDAY NOVEMBER
17 9 30 AM Public Auc-
tion of an 85 acre Dairy
farm, ready to operate 1
PM Also selling Farm
Machinery Located 1 1/2
miles south of Gap Chris-
tian K Lapp Estate
Naomi F Lapp & Thomas
C Lapp, Executors For
inspection of farm
717 442 4452 or
442 8501 Steve Peter-
sheim, Auctioneer
786 4624

SATURDAY
NOVEMBER 17 Public
Auction of an 85 Acre
Dairy Farm Farm
Machinery Located 2
miles south of Gap, PA
Christ Lapp Estate Steve
Petersheim Auctioneer
717 786-4624

FRIDAY NOVEMBER 23
1 30 PM Public Auction
Dairy Sale Located at the
Penns Valley Livestock
Auction Centre Hall, PA
Ron Gilligan Auctioneer

SATURDAY NOVEMBER
24 11 AM Public Auction
of Horses Located at
Keister's Middleburg Auc-
tion Sales Inc., Rt 522, 3
miles east of Middleburg,
PA 5 miles west of Selin-
grove PA Don & Walt
Keister Owners Ray
Long & Dave Imes, Auc-
tioneers

DECEMBER

FRIDAY DECEMBER 7
Monthly Cow Sale at Mel
Kolb, Inc Lancaster
Farm, 2220 Dairy Road,
Lancaster PA

FRIDAY DECEMBER 14
1 30 PM Public Auction of
State Grade Consignor
Feeder Pig Sale Located
at the Carlisle Livestock
Market Inc

THURSDAY DECEMBER
20 Monthly Cow Sale at
Mel Kolb, Inc, Maryland
Farm Woodsboro, MD, 1/2
mile North West of
Woodsboro on Rt 550 in
Frederick Co

JANUARY

TUESDAY JANUARY 1
7 30 PM Public Auction of
Weekly Sales Located at
the Penns Valley
Livestock Auction, Centre

Hall, PA Ron Gilligan,
Auctioneer

MARCH

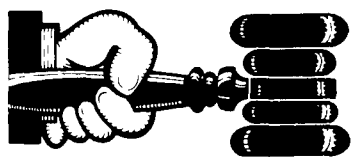
SATURDAY MARCH 9
9 AM Public Auction of
Farm Machinery,
Household Goods, Antiq-
ues located 2 miles Nor-
theast of Bernville off
Shartlesville Road, east
on Irish Creek Road, 1
mile to first farm on left 4
miles South of
Shartlesville, 4 miles
south of Centerport,
Berks County Sale by
Wilbur and Pauline Har-
tranf Owners Paul
Snyder and Alvin Horning,
Auctioneers

SALE EVERY TUESDAY

Graded Sale
1st Tuesday each
month
2 P.M.
Horse Auction
2nd Saturday each
month
1 P.M.

FAUQUIER LIVESTOCK EXCHANGE

Marshall Va
703 364 1566



AUCTIONEER'S DIRECTORY

NOTICE

To assure that your
Public Sale appears
in the Public Sale
Section we must
have your ad-
vertisement by 4
P.M. Tuesday of each
week's publication.

C.H. WOLGEMUTH
RD #2, MANHEIM
PA
AUCTIONEER
Member of



COMPLETE
AUCTION SERVICE
CALL
717-665-5664



KLINE & KREIDER
AUCTIONEERS

COMPLETE PROFESSIONAL AUCTION SERVICE
REAL ESTATE — FARMS & RESIDENTIAL
PERSONAL PROPERTY — ANTIQUES —
FARM STOCK SALES — LIQUIDATIONS

RANDAL V. KLINE
AUCTIONEER REALTOR
717 733 1006
717 569 8701

LLOYD H. KREIDER
AUCTIONEER
717 786 3394

PUBLIC AUCTION

Landis Auction Service

RD 5, MANHEIM, PA. PHONE (717) 665-5735
PROFESSIONAL • LICENSED
AUCTIONEERS

J. OMAR LANDIS & J.M. WITMAN
"SPECIALISTS"

- AUTOMOBILES
- ANTIQUES - FURNISHINGS
- ESTATES
- LIVESTOCK - MACHINERY
- REAL ESTATE

• MAILING LIST AVAILABLE
We are now listing Fall Sales.

PROFESSIONAL Auctioneering

PAUL E MARTIN JOHN D. STAUFFER
R.D. 1, Box 553 217 Andrea Dr
Stevens, Pa 17578 Lititz, Pa 17543

Complete Auction Service We assist you and advise
you from the planning stages of your auction to the
completion of your auction

For A Consultation In Your Home Call
Paul (717) 733 3511 — John (717) 665 5099
Licensed and Bonded



Coming... HOLSTEIN DISPERSAL

TUESDAY, SEPT. 11, 1984
8:00 P.M. D.S.T.

To be held at Smoketown Quality Dairy Sales, Smoketown, PA. 5 miles
East of Lancaster, 5 miles West of Intercourse.

ONE HERD COWS

Milking from 50 to 80 lbs. per day.

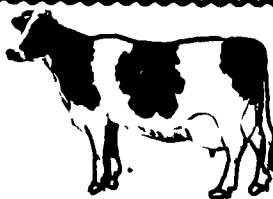
—WATCH FOR MORE DETAILS NEXT WEEK—

If you have a good herd of Dairy Cows or Heifers, Registered and Grades to
be sold, we will sell them for you.
We have the market for Registered and Grade Yearlings, Open Heifers and
Bred Heifers.

—Private Sales Daily—
Sale Managed By

SMOKETOWN QUALITY DAIRY SALES

Gordon and Helen Fritz
717-393-0930



NEW HOLLAND SALES STABLES, INC.

New Holland, Pa.

DAIRY SALE CONSIGNMENTS

For

WEDNESDAY, SEPTEMBER 5, 1984

TWO HERDS CONSIGNED BY D.H. RUMSEY

* ONE HERD 35 HEAD 1st and 2nd CALF HEIFERS, FRESH AND
SPRINGERS, BALANCE IN ALL STAGES.

* ONE HERD 50 HEAD, FRESH AND SPRINGERS, BALANCE IN ALL
STAGES FROM NEW YORK STATE.

- * 1 load fresh and springer cows consigned by Merle Breneman.
- * 1 load fresh and springer cows consigned by Norman and David Kolb.
- * 1 load fresh and springer cows consigned by Marvin Eshleman.
- * 1 load fresh and springer cows consigned by Raymond Smucker.
- * 15 head of top fresh and springer cows consigned by H.D. Matz.
- * 1 load fresh cows consigned by Alfred Albricht.

COMPLETE DISPERSAL SALE

Discontinuing farm, the undersigned will
sell. Located 20 miles SE of Frederick,
Md. on I 270, west on Route 118, thru
Germantown to crossroads, right on
Route 117 for approx. 500 yards, left on
Sheaffer Road 1 1/2 mile to Twin Oak
Farm.

SAT., SEPT. 15, 1984

at 9:30 A.M.

112 HEAD OF CATTLE 112

Consisting of 59 Holstein dairy cows, 16 are
dry w/balance in different stages of lactation;
12 Jersey dairy cows, 2 are dry w/balance in
different stages of lactation; Guernsey milking
& bred back; 26 Holstein heifers from 1 to 2 yrs.
of age, of which 2 to freshen by sale date; 14
head Holstein heifers from started to 5 mo. of
age.

Heifers are mostly all calfhoo vac., herd
bangs & T.B. tested within 30 days for in-
terstate shipment. Pregnancy examined by
Oct. & cattle sale held in tent.

TRACTORS AND MACHINERY

Case 770 Agri King diesel tractor, W.F., P.S.,
hydrostatic; Farmal 400 tractor; Farmal M
tractor; Economy 14 HP lawn & garden tractor
w/new motor & 5 ft. mower deck; Dynamark 11
HP lawn tractor w/mower deck; Int. 225 self
propelled hayswather, 9 ft.; New Holland 256
side rake; New Holland 277 hayliner baler
w/thrower; Massey Ferguson #9 baler
w/thrower; 4 wagons w/hay sides; Fox model
TF 546 chopper w/2 row corn head, pickup
head; Int. 550 chopper w/2 row corn head; Allis
Chalmers 4 row corn planter; John Deere 122
chuck wagon w/roof; Fox silage wagon
w/roof; JD 400 portable grinder mixer; Hanson
field sprayer w/300 gal. tank; Case 13/7 gran
drill; Mayrath 36 ft. elevator w/5 3/4 HP gas
motor; N.H. 15 ft. table elevator; 24 ft. corn
conveyor; N.H. Cross conveyor; New Holland,
New Idea, Meyers manure spreaders; 3 pt.
post hole digger; Garber tractor seeder; Papec
blower; pipe & snouts; A.C. 10 ft. transport
disc; double cultipacker; 2 row cultivator;
loader for 8N Ford, Gehl silage wagon & other
machinery for parts & junk.

FEED & MISC.

Linde semen tank and semen; breeding kit &
supplies; 2 calf hutches; 2 feed carts; 2 silage
carts; 2 wheelbarrows; 8 section of double
display shelving. Approx. 3500 bales of Timothy
& mixed hay. Approx. 1000 bales 2nd cutting of
same. Approx. 700 bales of 1st cutting alfalfa.

All of alfalfa & mixed hay to be made by sale
also sells. Hay sold by bale.

35 acres of standing corn
1974 Ford 1/2 ton pickup
Yamaha 225 three wheeler, 5 mo. old Spotted
pony broke for children.

Terms: Cash. Not responsible for accidents

MR. & MRS. JAMES B. BRINEGAR

Phone (301) 972-9516

Auctioneer: Robert C. Mullendore
Clerk: C. L. Metz

Lunch Rights Reserved