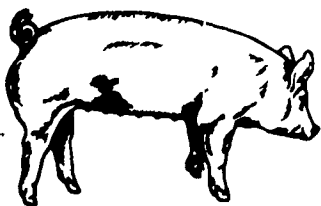


**HOUVALE FARMS**13th YORKSHIRE  
PRODUCTION SALE**SEPTEMBER 7, 1984**

Sale 6:30 P.M.

**Location:** Lebanon Area Fairgrounds,  
Evergreen Road and Cornwall Road,  
Rocherty Road East off of Route 72,  
Lebanon, Pa.Basics never went out of style: with our herd  
priorities on Health, Production, Soundness,  
Mothering Ability, and rate of Gain. These are  
the basic keys to a purebred and commercial  
hog man's profits. When it comes to Raising  
Pigs — Yorkshires Wrote the Book!

YORKSHIRES

Our pen of 4 Boars at Penn State Test Station  
ave. 2.21 lbs. daily gain. 73 Back fat 4.66 Loin  
eye 62.33% Lean cuts score of 2 on soundness &  
underline 112 Index. These pigs were sired by  
Dallas from the 1983 Type Conference.SELLING APPROX. 50 BRED GILTS  
25 OPEN GILTS  
25 BOARSAll animals will be bled and negative to  
Pseudorabies and Brucellosis so they can go  
into any state on sale day.**For Catalogue, Write to:**Elwood E. Houser  
2150 Quentin Rd., Lebanon, PA 17042  
Phone (717) 272-5798 or (717) 273-2921

This is Investment Day

Auctioneer: Col. Harry Bachman  
Phone (717) 867-1809**REAL ESTATE  
AUCTION****E. STEWART DAHLHEIMER ESTATE  
FARMETTE — ACREAGE  
BUILDING LOTS****WEDNESDAY EVENING,  
SEPTEMBER 26, 1984**

5:00 P.M.

**LOCATED:** 8 miles north of York, Pa. off  
Rt. 30 at Bull Rd. - north, 1½ mile north  
of Hakes Store on Bull Rd. & Canal Rd.,  
east of Dover, Pa. or west of Rt. 83.**TRACT #1-** 42.39 acres in Dover Twp.  
w/springs, 2 wells, 4 car frame garage  
with hoghouse, 936 ft. frontage on Bull  
Rd. approx. 1½ area wooded. (Dover  
School District)**TRACT #2-** 11 acres in Conewago Twp. w/2½  
story 9 room frame house w/large  
country style kitchen with bath on 1st  
floor, frame bank barn w/2 hay mows & 2  
barn floors & stone barn yard fence,  
frame storage shed & other out buildings.  
Rd. frontage of 854 ft. on Bull Rd. - 809 ft.  
frontage on butter Rd. (Northeastern  
School District) (Directly across from  
Tract #1).**TRACT #3-** 3.8 acres, with small wooded area,  
475 ft. frontage on Butter Rd., 378 ft.  
frontage on Mill Creek Rd. (T-839),  
North-East corner of Butter Road & Mill  
Creek Road.**TRACT #4-** 3 acres with 86 ft. frontage on Bull  
Rd., 420 ft. frontage on Butter Rd., 378 ft.  
on Mill Creek Rd. South-East corner of  
Butter Rd. & Mill Creek Rd.**TRACT #5-** 2.44 Wooded acres, with 265 ft.  
frontage on Butter Road.**TRACT #6-** 2.74 Wooded acres, with 262 ft.  
frontage on Butter Road.**NOTE:** Tracts #3, 4, 5, & 6 are approved for  
Sewer Systems & are located in Conewago  
Twp., York Co., Northeastern School District.All tracts are located in agricultural zone.  
For inspection & information call 292-1566 or  
764-3271.**TERMS:** 10% Down, Balance within 45 days.**E. STEWART DAHLHEIMER ESTATE**Executors: Clark E. Dahlheimer  
Raymond H. Dahlheimer

ATTORNEY: J. Eugene Stumpf

AUCTIONEER: Blaine N. Rentzel

Emigsville, Pa.

Ph. 764-6412

Pa. Auctioneer's Lic. #761

**Dairy and  
Livestock Sales****PUBLIC SALE**From Interstate 81 South of Martinsburg,  
WV, Take Exit #5 (Inwood) WV, Route 51  
East approximately 3½ miles to Shutt's  
Cash Grocery (Formerly Haines') Turn  
right - .2 of a mile to sale. OR From  
Charles Town, WV, Take route 51 West,  
Go approximately 8½ miles to Shutt's  
Cash Grocery Turn left - .2 of a mile to  
sale.**MONDAY, SEPT. 3, 1984**

AT 9:00 A.M.

**TRACTORS AND EQUIPMENT:** Ap-  
proximately 20-25 tractors including Cubs,  
Fords, John Deere, internationals, Fergusens,  
and other tractors. We will also be offering a  
good selection of plows, cultivators, wagons,  
new and used rotary cutters, 6 and 7 ft. blades,  
post hole diggers, discs, wood saws, rakes,  
balers, round balers, grain elevators, corn  
pickers, and other farm relating articles.We will also be offering a good selection of  
**NEW AND USED TOOLS** - Canned goods,  
hams and other food items - Some household  
items.**TERMS:** Cash or Good Check. Nothing to be  
removed until settled for ID required to  
acquire bidding number.**NOTE:** This is a consignment sale. Let us turn  
your unused farm articles, household articles,  
and antiques into cash for you. If you are  
considering having an auction, please contact  
us. We would be pleased to serve your needs.**ORDER OF SALE:** Small items - tools,  
household articles, food, etc. will be offered  
promptly at 9 a.m. Tractors and Equipment  
will be offered promptly at 1 p.m.**NOT RESPONSIBLE FOR ACCIDENTS ON  
PREMISES**Edgar A. Bohrer, Sale Mgr.  
WV Lic. #18-85, 304-229-8354

CLERKS: Bohrer and Bohrer

LUNCH RIGHTS RESERVED

**NORTHEAST  
DISTRICT  
CLASSIC**At the Cleo Teel farm located three miles  
east of Dimock and seven miles south of  
Montrose, PA. From blinker light in  
Dimock go south to first street and turn  
left (east). Farm is 3 miles on right (15  
miles north of Tunkhannock).**SAT., SEPT. 15, 1984**

12:00 Noon

**45 HEAD OF SELECT  
REGISTERED HOLSTEINS 45**Daughters selling of the elite sires of the breed:  
S-W-D Valiant, Marshfield Elevation Tony,  
Cal-Clark Board Chairman, Straight Pine  
Elevation Pete, Wileeda Citation R., Whirlhill  
Kingpin and other popular sires.**THESE SELL:**Marshfield Elevation Tony dtr.- Dam VG  
Chairman with 1072F.Chairman bred heifers- Dam VG Elevation  
with 926F.Chairman dtr.- Dam VG87 with 24,784M and  
808F, Gr dam VG87.Wileeda dtr.- Dam VG87 with 943F, Gr dam VG  
with 1126F, 3rd dam VG with 821F.

Pete bred heifer- Dam with 24,513M and 903F.

Wileeda dtr.- Dam VG with 733F, Gr dam VG,  
next dam GMD.Valiant dtr. bred to Chairman- Dam VG with  
20,535M and 718F.

Valiant sells fresh- Dam VG88.

Chairman bred heifer- Dam with 27,120M and  
941F.VG 87 Jet Stream dtr. with 4-7 352 21,871M 731F  
bred to SexationA proven place to buy quality cattle at  
reasonable prices.

Sponsored by

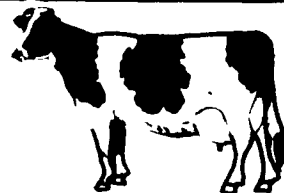
**SUSQUEHANNA HOLSTEIN CLUB**

Sale Manager

REMSBURG SALE SERVICE

P.O. Box 177 Jefferson, MD 21755

Phone: 301-473-8214

**WEST VIRGINIA  
STATE SALE**At the Jefferson County (W. Va.) Fairgrounds just west of Charles  
Town, W. Va. From Charles Town take Route 9 west and follow  
sale signs.**SATURDAY, SEPTEMBER 8**

12 Noon

**40 REGISTERED HOLSTEINS 40**Sires include Hilltop Apollo Ivanhoe, Elevation, Valiant, Chairman,  
Arlinda Chief, Jerry, Bell and others from among the most popular sires  
available in A.I.**PEDIGREE POWER**— Several sell with West Virginia production leaders close-up in the  
pedigree.

Records to 26,000M and 900F.

— Twenty-three sell from dams over 18,000M.

— Four VG cows sell - 11 sell from VG dams.

Twenty-seven due at or near sale time - majority coming with first or  
second calf.

A selected group sure to please, whatever the need. Plan to attend!

Sponsored by

**WEST VIRGINIA HOLSTEIN ASSOCIATION**

Sale Manager

REMSBURG SALE SERVICE

P.O. Box 177

Jefferson, MD 21755

Ph. 301-473-8214

**ABSOLUTE AUCTION****FALL CLEARANCE OF  
TRACTORS, COMBINES and  
HARVESTING MACHINERY****WEDNESDAY, SEPTEMBER 5, 1984**

10:00 A.M. (Rain or Shine)

Location: Taylor & Messick Inc., Vernon Rd., Harrington,  
Delaware.**TRACTORS**6030 John Deere w/dual wheels &  
cab  
4630 John Deere w/dual wheels &  
cab  
4020 John Deere w/dual power  
shift  
2020 John Deere w/rack & pinion  
wheels  
9N Ford-motor good & new tires  
2010 John Deere  
620 John Deere-good tires, motor &  
new paint  
4230 John Deere less cab  
I.H. white cub w/mower**LAWN MOWERS**IH, John Deere, Dynmark and  
other makes and models.**COMBINES**7700 Hydrostatic w/24.5-32 tires  
#114858 reconditioned  
7700 J.D. w/24.5-32 tires #003931  
reconditioned  
7700 J.D. w/24.5-32 tires #003385  
reconditioned  
7700 J.D. w/23.1-26 tires #002420  
7700 J.D. w/24.5-32 tires #008206-  
nearly new motor  
7700 J.D. w/23.1-26 tires #001369-  
reconditioned  
7700 J.D. w/24.5-32 tires #004538-  
reconditioned  
7700 J.D. w/24.5-32 tires #003017-  
reconditioned  
105 J.D. corn special w/good tires,  
15' cutter bar  
105 J.D. w/straw spreader, 13 ft.  
platform.  
All machines came out of field  
working and the ones recon-  
ditioned have been run in wheat  
to check if o.k.

All machines will be sold regardless of price the day of sale.

Financing can be arranged prior to day of sale for waiver of interest on  
tractors and combines.**Terms:** Cash or approved check w/current letter of credit from your bank.  
This is a partial listing of machinery to be sold. Many small items will be  
sold, but not listed in time to be  
included in this ad.

Loading and Unloading Service Available!

Wilson's Auction Sales, Inc.

Lincoln, Del.

Dave Wilson, Auctioneer and Sales Manager

422-3454 or 856-2110

Lunch Served

**BEAN HEADS**653A Bean Head-used very little  
454 Bean Head**CORN HEADS**4-444 Corn Heads  
2-643 Corn Heads  
1-635N Corn Head for 105.**CUTTER BARS**2-16' J.D. regular cutter bars  
2-218 Flex Head cutter bars  
1-222 Flex Head cutter bars  
4-216 Flex Head cutter bars  
All Bean Heads, Corn Heads, and  
Flex Cutter bars are in working  
shape.**FORAGE HARVESTERS**3800 John Deere Chopper w/pickup  
attach., 2 row 30 in. corn head  
#35 J.D. chopper w/1 row corn  
head  
717 New Holland chopper w/1 row  
corn head**DISC HARROW**

BWA J.D. 15' disc harrow

**MULCHER**

J.D. 15' Pulvi-Mulcher

**CULTIVATORS**Case 12' field cult., w/Midwest  
harrow attach.**GYRAMOR**

2-205 J.D. Gyramors.

**MOWER**

#27 J.D. 15' flail mower.

**PLOW**

J.D. 2450 plow.

**BLADE**

J.D. 9' 3 p.h. Blade.

**BEAN SHAKERS**

2-Lilliston Bean Shakers.