

Public Auction Register

SATURDAY
SEPTEMBER 15 2 PM
Public Auction of 23+
Acres Gentleman's
Farm/Estate Located in
Hills Worcester Twp
Montgomery Co PA
Trooper Rd 2 of a mile
north of Twp Line Rd
just east of Valley Forge
Rd (Rt 363) Norristown

minutes King of
Prussia 15 minutes
From King of Prussia & Rt
202, take Rt 363
(Trooper Rd) crossing
Beltzwood Bridge to
Ridge Pike (at Burger
King) Continue across
Germantown Pike to T
left then right crossing
Twp Line Rd to property

right Louis Traiman
Auction Co Auctioneers
SATURDAY
SEPTEMBER 15 10 AM
Public Auction of a
Valuable Farm Located at
6407 Stone Bridge Rd
Antrim Twp Franklin Co
PA From Greencastle
north on Williamson Rd
to Stone Bridge Rd, turn
right and proceed
through intersection with
Guitner Rd 1st lane on
left past Guitner Rd D J
Raymond & Nellie Blanche
Statter Owners John J
Thompson Auctioneer

AUCTION

KATHERINE SHATTO ESTATE
999 EAST UNION STREET, MILLERSBURG, PENNSYLVANIA
SATURDAY, SEPTEMBER 8, 1984
9:00 A.M.

REAL ESTATE

PARCEL #1: 1-Ohio Sandstone Ranch-Style Home With 6 Rooms, 2½ Baths, Lots Of Closets And Wall-To-Wall Carpet Throughout...Perma-Stone 2-Car Garage With Work Area...Cement Block Building With Large Work Area And 1-Car Garage.

Parcels #2 and #3: Lot Situate On The North Side Of Union Street Consisting of 50' Frontage And 125' Depth.

For additional information or inspection phone 717-758-6004. Real Estate will be offered at 1:00 P.M.

ANTIQUES & COLLECTIBLES

Walnut 8-Day Grandfather's Clock with Painted Dial, Quarter Columns, Broken Arch Top, 97" H.; Ithaca Calendar Wall Clock with Walnut Case and Black Dials; Regulator Walnut Case Wall Clock with Calendar Face; New Haven Octagon Wall Clock; Collection of Mantel Clocks Include Seth Thomas OG, Welch Oak Case, Ansonia OG, Walnut Case "King" Model, Etc.; Walnut Furniture Includes (2) Wash Stands - 1 with Marble Top, Refinished 4-Leg Dropleaf Table, Wilcox & White High Back Organ, Marble Base Pier Mirror; Oak Furniture Includes Extension Table, Knee-Hole Desk, (2) Rockers, Round Stand, Oak Case Sewing Machine; Low Dry Sink; 6-Pc. Victorian Living Room Suite; (2) Blanket Chests; Victorian Sofa; Library Table; Jelly Cupboard; Flour Chest with Dough Box; Unusual Combination Flour Bin-Woodbox; (3) Cane Seated Chairs and Rocker; Two 1-Drawer Stands; Montour Pot Belly Coal Stove; Country Store Counter-Top Scale; Wicker Fernery; Copper Washboiler; Jug with Cobalt Blue Floral Decoration; Cowden & Wilcox Jug; Misc. Jardinieres; Brass Bucket and Handbell; Rayo Lamp (Electrified); Half Shade Gone with the Wind Lamp; (2) Aladdin Lamps; Assorted Kerosene Lamps; 3-Pc. Sterling Comb, Brush & Mirror Set; "The Way to Pray" Hummel Figurine; Angelic Procession Collector's Bell; Assortment of Depression, Pattern and Pressed Glass; Etc.

1968 CADILLAC SEDAN DE VILLE

1968 AMERICAN MOTORS 440 STATION WAGON, 290V-8, 28,000 MILES

1960 JEEP 4-WHEEL DRIVE PICK-UP WITH SNOW BLADE

CUB CADET 800 RIDING TRACTOR WITH 44"-CUT MOWER

HOUSEHOLD ITEMS

Frigidaire Stove; Frigidaire Custom Deluxe Side-by-Side Refrigerator-Freezer; G.E. Automatic Washer; Kelvinator Dryer; RCA XK100 Floor Model Color TV with Remote Control; (2) RCA XL100 Portable TV's - 1 with remote control; 5-Pc. Cherry Dinette Set by Heywood Wakefield; 9-Pc. Pennsylvania House Cherry Dining Room Suite; Pennsylvania House Cherry Glass Door Corner Cupboard; Reproduction Cherry 6-Leg Dropleaf Table; 5-Pc. Mahogany Bedroom Suite (Twin Beds); 4-Pc. White French Provincial Bedroom Suite; Sofa; Swivel Rocker; Recliner; Misc. Upholstered Chairs; Reproduction Ornate Wicker Chair; Office Desk; 3-Drawer Filing Cabinet; (2) Metal Single Door Cabinets; Gun Case; Assortment of Baskets; Kerosene Stove; Cobra Cordless Telephone; Misc. Fancy Work; Doilies, Etc.; Pr. of Brass Lamps; Watercolor by Ethel; Centennial Plates; Service for 12 Royal Jackson Antoinette Pattern China; Service for 8 Sango China; Assortment of Stainless Steel Cookware, Pots, Pans and Dishes; Pr. of Sterling Candlestick Holders; Numerous Other Items.

MACHINIST'S TOOLS & MISC. ITEMS

Lg. Floor Model 21" Champion Drill, Flat Belt Driven, Mfd. by Champion Blower & Forge Co., Lancaster, Pa.; Lg. Floor Model Metal Turning Lathe, Flat Belt Driven, Mfd. by The Hendley Machine Co.; Floor Model Flat Belt Driven Grinder; Peerless Floor Model Flat Belt Driven Hack Saw; 8" Sprunger Table Saw; 4½" Sprunger Joiner; Dunlap Bench Dill; Bench Vise; Blacksmith Forge; Bench Grinder; Lg. Selection of Hand Tools; Jackson Model 36H-80 Lawn Seeder; I.H. Lawn Sweeper; Lawn Roller; Rubber Tire Wheelbarrow; Aluminum Stepladder and Extension Ladder; Commercial Sewing Machine for Leather; Shop Vac; Etc.

COINS

War Nickels; Wheat Pennies; Denver Mint Souvenir Sets (1981, 1982, 1983); V-Nickels; Indian Head Pennies; Silver Dollars; (For complete listing of coins send name, address and stamp to Auctioneer. Coins will be sold at 2:00 P.M.)

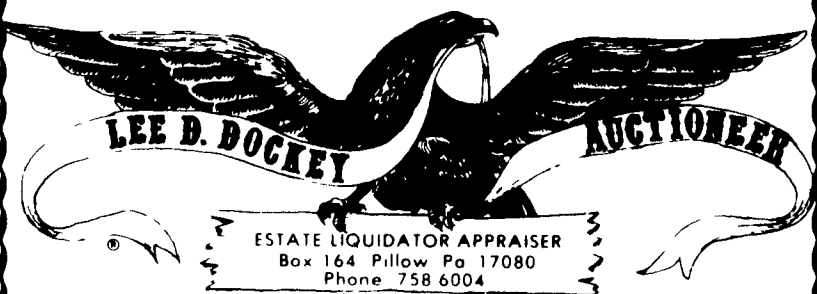
SALE WILL BEGIN WITH 2 AUCTIONEERS SELLING TOOLS AND HOUSEHOLD ITEMS

TERMS: Real Estate - 10% Down. Further Terms And Conditions To Be Given Day Of Sale.

Personal Property - Cash. Personal Checks Accepted Only From Persons Having An Established Account With Auctioneer Or Approval Prior To Day Of Sale.

Executor,
UPPER DAUPHIN NATIONAL BANK

Allen Shaffer, Attorney
Auctioneers: Dockey #AU-000229-L,
Dockey #AU-001683-L &
Deppen #AU-001957-L



PUBLIC SALE

YOUNG HERD DISPERSAL OF 33 HEAD AND DAIRY EQUIPMENT

After 24 years, we are discontinuing the dairy business and will sell the following located 2½ miles S/E of Taneytown, Carroll County, MD, take Travaniion Road at Taneytown Bank, go 1 2/10 mile to Otterdale Mill Rd., go South 1 3/10 mile to sale:

SATURDAY, SEPT. 15, 1984
AT 12:00 NOON

Included in this herd are 28 Head Holsteins, 4 Guernseys, 1 Jersey. Their ages are as follows: 3 bred heifers born 1982, 8 first calf heifers born 1981, 4 - 1980, 10 - 1979, 6 - 1978, 2 - 1976. Artificial insemination breeding for 24 years. Many of these cows are in full flow of milk. The balance to freshen throughout the year. Majority of herd home raised. This herd all out of registered stock, but no papers kept. All cows will be TB and bangs tested within 30 days of sale. Anyone looking for young cows, pleasing udders, don't miss this sale.

DAIRY EQUIPMENT

300 gal. Zero milk tank w/compressor, 52 gal. water heater, 4 units Surge milkers & pails, compressor, double compartment wash vat, 7 milker straps, plus other dairy equipment. Farm equipment & heifers will be sold in Spring.

TERMS: CASH OR GOOD CHECK DAY OF SALE

OWNERS:

MR. & MRS. SAMUEL COOL
1801 Otterdale Mill Road
Taneytown, MD 21787

Calvin L. Amoss-Auctioneer
Phone-756-6784

Carroll's Sales Co., Inc.

PUBLIC AUCTION

VALUABLE REAL ESTATE
"HORSE FARM", HORSES,
EQUIPMENT

MONDAY, SEPT. 17, 1984

at 12 O'Clock

SALE ORDER: Tack & Equip. 12 Noon
Real Estate 2:30 p.m.

REAL ESTATE 41 Acres, more or less, horse farm with following improvements.

1. Horse barn w/30 stalls, block and A frame roof for hay, shower, sleeping quarters, blacksmith shop.

2. ½ mile training track w/pond, several paddocks.

3. Barn 2-24 stalls, shed.

HORSES 32 Standardbreds - Call us for horse catalogue.

TACK Race bikes, jog carts, blankets, harness. TERMS: Cash day of sale for equipment & horses.

REAL ESTATE: 15% of the purchase price will be required to be paid on the day of the sale and final settlement in 60 days. The percentage paid on the day of the sale will be treated as part of the purchase price if terms of the sale are complied with; otherwise, it will be forfeited for noncompliance and treated as liquidated damages. Buyer to pay cost of deed, the Delaware transfer tax and the survey. Sellers reserve the right to accept and reject all bids.

LOCATION: Harrington, Delaware - Route 13 northbound to Callaway Furniture Store, turn left thru stop sign to route 279. Turn left, first place on left. Follow signs from Route 13.

FINANCING AVAILABLE from People's Bank of Harrington, % Edward Taylor - 398-3256 for qualified individuals.

SELLERS

MR. & MRS. J.D. DENNIS

SALES MANAGER
Carroll Sales Co., Inc.

Auctioneers: Harry Barrett
Anthony Carroll
Chester Lee Carroll
1-302-284-4911

DAIRY CATTLE & MACHINERY AUCTION

2 Yr. Old 2" Pipeline
Bulk Tank - 46 Head!

THURS., SEPT. 13, 1984

AT 12 NOON

for Clifford Van Etten III
Haggerty Rd., Sussex, N.J.

Take Rt. 565 4 miles S.W. of Sussex, N.J. to Rt. 637 toward Beemerville continue for 1¼ miles and turn right on Haggerty Rd. (Rt. 635) 1 mile to farm.

12 NOON MACHINERY NO SMALL ITEMS!

Bod-man Nu-Pulse 2" S.S. pipeline for 44 cows w/auto washer complete (only 2 yrs. old). Sunset 635 gal. Bulk Tank. TRACTOR- David Brown 990 DL, NEW HOLLAND EQUIP.- 273 hay baler w/thrower, rolla bar rake, 469 haybine, 30 ft. elevator, 717 chopper and flail chopper for parts. J.D. 36 chopper w/corn & pkup hds., J.D. 114 chuck wagon. GEHL EQUIP.- chuck wagon, hi throw blower w/pipe, flail chopper for parts. Myers 225 bu. manure spreader, 2 kicker hay wagons, 2 harrows, disc, 2 case elevators.

1 P.M. 46 HOLSTEINS!

40 young cows that haven't been pushed with feed! About ¼ are due this fall with the balance bred for year around production. Some are Registered! 1 heifer due this fall and 5 heifers just bred. Many young cattle that will only improve! Plan to attend! Pregnancy checked! T.B. & Blood tested for interstate shipment!

TERMS- Cash or Good Check w/proper I.D.! Full payment Sale Day! OUT OF STATE BUYERS Cash or Certified funds or Bank Letter of Credit! Lunch!

OWNER

CLIFFORD VAN ETTEN III

SALE CONDUCTED BY!

COL. FRED R. DANIEL AUCTIONEERS INC.

Neshanic Sta., N.J. 201-369-4784

PUBLIC AUCTION

SATURDAY, SEPT. 22, 1984

AT 10:00 A.M.

3 TRACTORS-EQUIPMENT-TRUCK

The undersigned, selling their farm, will sell the following at public auction on the premises known as 351 Speelman Klingler Rd., Gettysburg, Pa. just 1 mile off Littlestown-Gettysburg Pike (Rt. #97). Directions: North from Littlestown or South from Gettysburg on Rt. 97 to Two Taverns, then West on the Hoffman Home Rd., go 1 mile to left at Speelman Klingler Rd. (follow signs)

D-19 Allis Chalmers tractor w/4 - 16" bott. plow and 14' transport disc, Farmall H trac., John Deere B (needs repair), Oliver 16 disc grain drill w/fert. att., New Holland 275 baler, New Idea 1 row corn picker, 1 bale wagon, gravity grain wagon, 10' harrow, New Idea SD rake, 4 row corn planter, 2 bott. plow w/3 pt. hitch, 26' smoker elev. w/motor, 30' bale elevator w/motor, 2 wheel utility trailer, 1968 Dodge truck w/closed stock bed, Fox blower, 3 pt. lift, Sodder frt. end loader, post hole digger, 3 pt. seeder & fert. spreader, hammer mill, corn grinder, several old corn shellers, platform scales, metal wheelbarrow, Gravelly trac. w/sickle bar, rotary and snow blower attachments, farrowing crate, 125 motorcycle, 2 wooden ext. ladders 16' & 30', set car ramps, Powercraft jigsaw, chain saws, kero. blower shop heater, elec. fences, all kinds of hand tools, garden & farm tools, rotary mower, old feed boxes, pans and troughs etc., lot of good dry lumber, 2 rolls of barbed wire, 3 rolls approx. 39" woven wire, lot of wooden fence post, singletree, lot of bicycle parts, old collars and hames, 275 gal. oil tank, 50 gal. oil drums-oil and pump, class 3 trailer hitch, trailer mirrors, tractor radio and many, many items not listed. TERMS: Cash or Check

OWNERS:

MR. & MRS. EINOR C. NORMAN

Auctioneer:

Jack Reedy

Hampstead, Md.

(301) 239-8110

PA. license #AU-000750-L

LUNCH RIGHTS RESERVED

Please note antiques and household items selling Sept. 29th, 10:00 A.M., same location.