



# Lancaster County DHIA Monthly Report

(Continued from Page D19)

|                           |       |      |     |        |    |     |
|---------------------------|-------|------|-----|--------|----|-----|
| Leon Sensenig 95          | GrH   | 4-2  | 305 | 19,618 | 39 | 756 |
| Reuben A Stoltzfus Odette | RH    | 7-5  | 305 | 19,588 | 39 | 755 |
| Jay L Bixler Tara         | RH    | 3-7  | 305 | 19,525 | 39 | 755 |
| Meadow Springs Farm Bea   | GrH   | 6-2  | 305 | 18,543 | 41 | 755 |
| JM Stoltzfus Iva          | RH    | 3-0  | 282 | 17,381 | 43 | 755 |
| Jere&Leon Sensenig 50     | RBrSw | 5-2  | 291 | 16,691 | 45 | 755 |
| Loren L Zimmerman Penny   | RH    | 2-11 | 305 | 18,359 | 41 | 754 |
| John R&Rick Groff Jeanete | RH    | 3-2  | 305 | 22,153 | 34 | 752 |
| Luke Ray Zimmerman 35     | GrH   | 4-6  | 305 | 20,451 | 37 | 752 |
| Donald B Trimble 5        | RH    | 7-0  | 305 | 20,424 | 37 | 751 |
| Amos F Miller Bright      | RH    | 4-10 | 305 | 20,012 | 38 | 751 |
| Helen                     | GrH   | 8-1  | 305 | 15,321 | 49 | 746 |
| Triple H Farms 846        | GrH   | 4-7  | 305 | 16,835 | 45 | 750 |
| Christian Stoltzfus Lady  | GrH   | 6-9  | 297 | 18,991 | 39 | 749 |
| Willis M Martin Inez      | RH    | 4-1  | 305 | 23,184 | 32 | 748 |
| Christian G Becker 194    | GrH   | 7-0  | 305 | 18,543 | 40 | 748 |

|                            |     |      |     |        |    |     |
|----------------------------|-----|------|-----|--------|----|-----|
| Clair M Bowman Opalena     | RH  | 4-7  | 305 | 14,618 | 51 | 747 |
| ES Win Farm Crystal        | RH  | 7-7  | 305 | 21,185 | 35 | 746 |
| Ra-El Holsteins Bess       | RH  | 5-7  | 305 | 19,091 | 39 | 746 |
| David E DeLong Mendy       | GrH | 8-10 | 305 | 18,851 | 40 | 746 |
| Hershvale Farms 2 Ladd     | RH  | 9-1  | 305 | 21,265 | 35 | 745 |
| Alvin M Martin 47          | GrH | 4-2  | 305 | 22,515 | 33 | 743 |
| Aaron R Stoltzfoos Sally   | GrH | 6-10 | 305 | 22,448 | 33 | 743 |
| Riehlee Farm Alice         | RH  | 3-2  | 305 | 18,352 | 40 | 743 |
| Samuel L Stoltzfus Lena    | GrH | 9-0  | 305 | 18,001 | 41 | 743 |
| Ken&Nelson Stoner 123      | RH  | 3-1  | 305 | 19,420 | 38 | 742 |
| Water-Flow Farm Flick      | RH  | 8-5  | 305 | 16,285 | 46 | 742 |
| Nova                       | RH  | 10-0 | 305 | 20,562 | 36 | 740 |
| Delmar H Wenger Mitt       | RH  | 4-11 | 305 | 22,368 | 33 | 741 |
| Daniel Dienner Jr Bell     | GrH | 5-10 | 305 | 20,435 | 36 | 741 |
| Stephen J Stoltzfus Proud  | RH  | 5-4  | 305 | 17,648 | 42 | 741 |
| Gerald Martin Penny        | RH  | 2-2  | 305 | 17,595 | 42 | 741 |
| Raymond&Louise Witmer Gail | RG  | 3-4  | 305 | 19,019 | 39 | 740 |
| Dennis R Bender 111        | RH  | 3-1  | 305 | 18,971 | 39 | 740 |
| Aaron Lapp Jr Jewel        | GrH | 6-2  | 305 | 18,751 | 39 | 740 |

## SUSSEX COUNTY DHIA June Report

Following are the top five herds of Sussex County, N.J., for the month of June.

|                 |       |        |     |     |
|-----------------|-------|--------|-----|-----|
| Behrman         | 56 4  | 20,298 | 3 8 | 772 |
| Terhune         | 65 5  | 19,082 | 3 6 | 693 |
| Ricker Brothers | 135 3 | 17,473 | 3 8 | 660 |
| Vander Goot     | 57 5  | 18,367 | 3 6 | 660 |
| Hen-Dar Farm    | 52 7  | 20,327 | 3 2 | 660 |



# Dauphin County DHIA Monthly Report

July Report

| OWNER                 | BREED | % DAYS IN MILK | LBS. MILK | LBS FAT |
|-----------------------|-------|----------------|-----------|---------|
| Catalpa Farms         | H     | 135 3          | 19,477    | 703     |
| Roy M Brubaker        | H     | 82 3           | 19,326    | 700     |
| Robert J Schaffer     | H     | 61 0           | 18,210    | 684     |
| Roy C Wilbert         | H     | 39 4           | 18,741    | 671     |
| Restful Acres         | H     | 88 3           | 18,098    | 670     |
| John Hertzler         | H     | 77 1           | 17,585    | 668     |
| Crissinger Dairy Farm | H     | 86 9           | 17,058    | 650     |
| Earl Campbell         | H     | 45 6           | 16,190    | 646     |
| J Melvin Brandt       | H     | 77 3           | 16,606    | 639     |
| Larry L Boyer         | H     | 22 6           | 17,335    | 631     |
| Stoney Lawn Farms     | H     | 58 7           | 18,061    | 630     |
| Elwillo Farms         | Mix   | 133 9          | 16,117    | 623     |
| Robert H Beach Jr     | H     | 41 7           | 16,031    | 618     |
| Terlin Farms          | G     | 69 3           | 13,060    | 616     |
| Alwine Farms          | H     | 76 4           | 16,457    | 616     |
| Wilmer Campbell       | G     | 65 0           | 13,751    | 607     |
| Mahlon L Lehman       | H     | 59 5           | 16,780    | 607     |
| Wil-Lene Farms        | H     | 65 7           | 16,447    | 606     |
| Conewago Farms        | H     | 35 6           | 14,789    | 602     |
| Arthur Brandt         | H     | 92 8           | 15,601    | 592     |
| Robert Oellig         | H     | 35 9           | 15,005    | 590     |
| Lytile Farms Inc      | H     | 101 2          | 16,499    | 582     |
| Harold M Nissley      | H     | 41 2           | 16,138    | 575     |
| Donald Engle          | H     | 76 7           | 15,992    | 572     |
| Sher Mar Acres        | H     | 61 3           | 15,477    | 571     |
| Great View Farms      | H     | 52 2           | 15,169    | 570     |
| A Grand View          | H     | 152 9          | 15,246    | 565     |

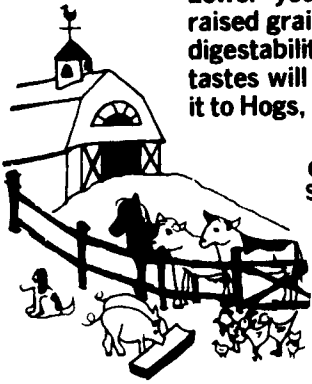
(Turn to Page D21)

## SOYBEAN ROASTING ON YOUR FARM

DON'T WASTE IT - ROAST IT

Roast Your Barley, Wheat & Oats

Lower your feed costs by feeding your own raised grains. Roasting your grains will increase digestability and remove moisture. Flat bitter tastes will turn to sweet pleasant flavors. Feed it to Hogs, Heifers, Dairy Cows and Horses.



CUSTOM GRAIN ROASTING DONE IN PA AND SURROUNDING STATES OR OWN YOUR OWN ROAST-A-MATIC GRAIN ROASTER.

**DALE L. SCHNUPP**  
RD 6, Lebanon, Pa. 17042  
PH: 717-865-6611

**ALLEN SUMMERS**  
RD 1  
Nottingham, Pa. 19362  
215-932-4761

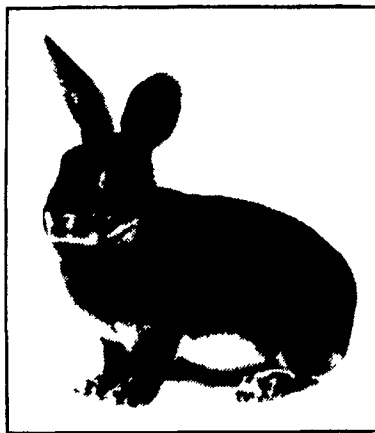
**PENN OHIO GRAIN ROASTING**  
RD 2, Box 91  
Enon Valley, PA 16120  
412-336-5443

**DAVID N. GROFF**  
RD 1 Box 506C  
Lewisburg, Pa. 17837  
717-966-3593

## HELP WANTED

Earn \$10, \$15, \$20 thousand a year or more! Raise REX RABBITS for the multi-million dollar fur industry.

Turn your unused space and spare time into profits.



• Excellent Investment • Exciting Program • Enormous Profits

To learn more without obligation, fill out and mail the coupon below today:

Yes! I am interested in making money by becoming a commercial Fur Rancher!

NAME \_\_\_\_\_  
ADDRESS \_\_\_\_\_  
City \_\_\_\_\_ State \_\_\_\_\_ Zip \_\_\_\_\_  
Phone \_\_\_\_\_ Age \_\_\_\_\_  
Married/Single \_\_\_\_\_  
Occupation \_\_\_\_\_ LF \_\_\_\_\_

**Royal Rex Ranches, Inc.**  
RR1, Box 54  
Equinunk, Pa.  
18417  
(717) 224-4580

## SANDBLASTING AND SPRAY PAINTING

Aerial Ladder Equipment  
Farm Buildings  
Feed Mills  
Commercial-Industrial  
Repainting  
Interior/Exterior



**HENRY K. FISHER INC.**  
667 Hartman Station Rd.  
Lancaster, PA  
393-6530

## SCALES

LIVESTOCK SCALES For Hog Operations

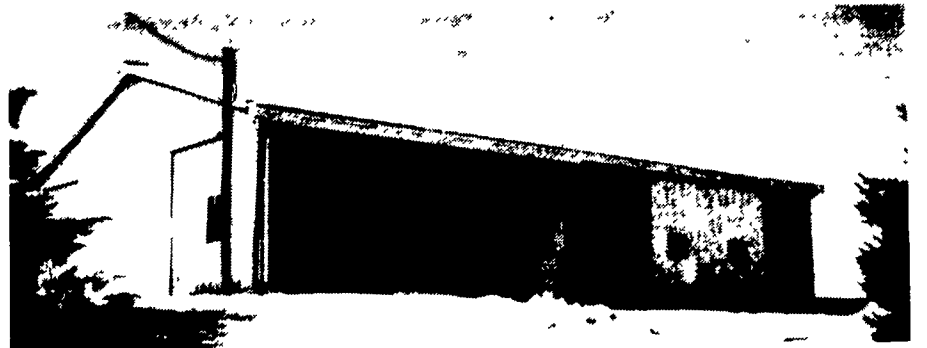
TRUCK & PLATFORM SCALES ALSO AVAILABLE

**GARBER SCALE COMPANY**

P.O. Box 8  
Smoketown, PA 17576  
Phone: 717-393-1708  
ALL SCALES STATE APPROVED.

## POLE BUILDINGS

by Stoltzfus Builders



CUSTOM BUILT AGRICULTURAL, RESIDENTIAL AND COMMERCIAL BUILDINGS FOR A VARIETY OF NEEDS:

- Painted Galvanized Roof & Siding in a wide range of sizes, designs and colors.
- Weather Resistant Pressure Treated Poles and 2x6's T&G Skirting

Call For A Free Brochure

**BEN STOLTZFUS**  
(215) 273-3456

**SAM STOLTZFUS**  
(215) 273-3495

Honeybrook, PA