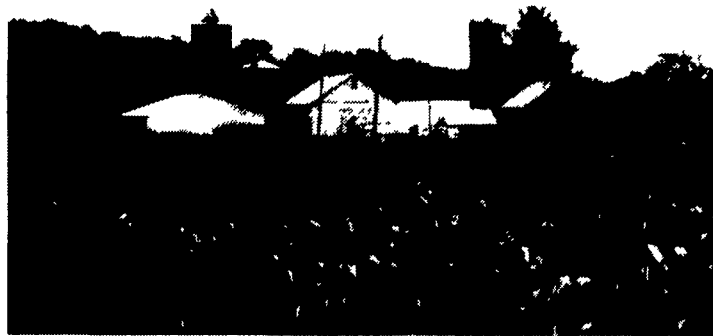


You're Invited To Join Our  
**AUGUST**  
**HARVESTORE<sup>®</sup>**  
**HIGH MOISTURE GRAIN TOUR**

Visit three area dairymen who have had dramatic results feeding Harvestore<sup>®</sup>-processed High Moisture Grain.

**Lebanon County**

Off-the-farm feed costs substantially reduced for this Holstein herd. Current production at 16,340 lbs. milk with 591 lbs. BF.



**Berks County**

Milk production increased by 3,500 lbs. to present level of 19,202 lbs. First year on Harvestore<sup>®</sup> high moisture grain 23 cows produced over 100 lbs./day!

**Berks County**

NO SUPPLEMENT fed to this herd for over three months! Production currently 20,010 lbs. milk and 742 lbs. fat, an increase of 5,300 lbs. milk since feeding Harvestore<sup>®</sup>-processed feeds.



Watch for upcoming Lancaster Co. computer feeder Open House announcement!

Authorized Harvestore<sup>®</sup> Systems Dealer

Farm Master Tumble Mixers



Authorized Slurrystore<sup>®</sup> Systems Dealer

Computrac Feeders

P.O. Box 7

New Holland, PA 17557

717-354-4051