

## Northampton Co. names dairy winners



Winners of the Plainfield Fair Youth Show are, from left, Patty Miller, reserve junior champion; Elizabeth Strohmeier, junior champion; Northampton-Lehigh Dairy Princess Michele Fulmer; Robert Miller, grand champion; Susan Fulmer, reserve grand champion; and judge Jim Shaw.



Don, left, and Doug Seipt, representing Keystone Farms, show their grand and reserve grand champions of the Northampton County Black and White Show to judge Sam Acker.



Northampton-Lehigh County Dairy Princess Michele Fulmer, right, congratulates Northampton County Black and White Show winners Elizabeth Strohmeier, reserve junior champion, and Robert Miller, junior champion.

### Dairy farmers

to receive **\$12.84**

for July milk

NEW YORK, N.J. — Dairy farmers who supplied milk plants regulated under the New York-New Jersey marketing orders during July 1984 will be paid on the basis of a uniform price of \$12.84 per hundredweight (27.6 cents per quart).

Market Administrator Thomas A. Wilson also stated that the price was \$12.29 in June 1984 and \$13.12 in July 1983. The uniform price is a marketwide weighted average of the value of farm milk used for fluid and manufactured dairy products.

The seasonal incentive plan does not affect the uniform price for the month of July.

A total of 16,866 dairy farmers supplied the New York-New Jersey Milk Marketing Area with 949,691,577 pounds of milk during July 1984. This was a decrease of 4.6 percent (about 46 million pounds) from last year. The gross value to dairy farmers for milk deliveries was \$122,638,963.62. This included differentials required to be paid to dairy farmers but not voluntary premiums or deductions authorized by the farmer.

Regulated milk dealers (handlers) used 351,509,052 pounds of milk for Class I, 37.0 percent of the total. This milk is used for fluid milk products such as homogenized, flavored, low test, and skim milks. For July 1984, handlers paid \$14.33 per hundredweight (30.8 cents per quart) for Class I milk compared with \$14.76 a year ago.

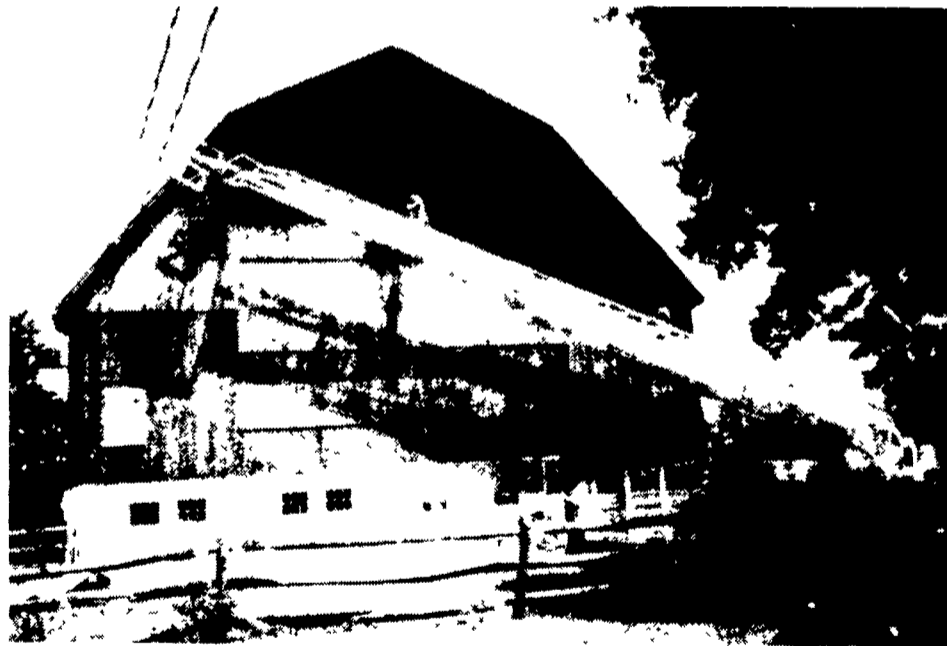
The balance (598,182,525 pounds or 63.0 percent) was used to manufacture Class II products including butter, cheese, ice cream, and yogurt. Handlers paid \$12.20 per hundredweight for this milk.

The uniform price is based on milk containing 3.5 percent butterfat. For July 1984, there was a price differential of 17.9 cents for each one-tenth of one percent that the milk tested above or below the 3.5 percent standard.

All prices quoted are for bulk tank milk received within the 201-210 mile zone from New York City.

## FARM BUILDINGS NEED PAINTED? Let Seal Crete Brighten Up Your Life

*"The Farm Painting Specialist" Since 1961*



**NO JOB  
- WE  
CAN'T  
HANDLE**

OUR SPECIALITIES ARE:

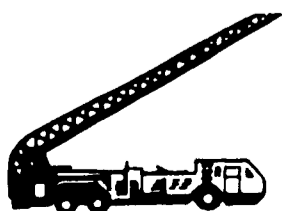
**AGRICULTURE - COMMERCIAL - INDUSTRIAL - CHURCHES**

- Barn Painting
- Milk House
- Roof Coating
- Water Proofing Silos
- Stucco Farmhouses

**WE ARE FUSSY PAINTERS**

**The Job Must Be Done To Your  
— Satisfaction —**

For FREE Estimate CALL



# Seal Crete Inc.

PAINTING & WATERPROOFING  
RD 2, Box 417, Ephrata, PA 17522 • 717-859-1127