

PUBLIC AUCTION

FARM MACHINERY
LABOR DAY
MONDAY, SEPT. 3, 1984
FOR H. KINSEY

Located between Limeport & Cooperburg on Chestnut Hill Rd. South off Beverly Hill Rd., at intersection of Grant Rd. & Standard Lane. 5 miles North of Quakertown & 10 miles South of Allentown. Look for Auction Signs.

JD 2640 D tractor (only 1500 hrs.), David Brown w/front loader, Farmall M, JD 3B. 16" plow, 12' spr. harrow, 2R. J.D. corn planter, 6' Ford scraper, (last 4 are 3 PH), NI 323 corn picker, 40' Zimmerman elev., 1207 JD mower cond., NH 354 Grinder-mixer, NI 217 manure spreader, Badger blower, NH forage wag. w/roof, NH 717 forage harv. corn & hay pickup, JD 13T. disc drill, NI 2 wheel rake, Ford baler, Gravity wagon 2 others, 1 lge. 2 wheel trailer, sprayer, cord saw, JD roller harrow, Int. 76 combine (as is), DeLaval mag. milker complete, milk cans, fencing, 7 rolls barb wire new, oak boards, treated 2x6's x 25 lgr. poles, old barn boards, 60' Brillion feeder, JD fert. spreader, burning outfit w/tanks, welder, Stewart Clipmaster, anvil, wheel balancer, JD power washer; 12 ga. Sterlingworth shotgun, 4 yr. old Quarterhorse, all the odds & ends of 35 yrs. farming.

For information call 215-282-1695
Refreshments

Conditions by
H. KINSEY

James W. Mohr, Auct.
AU000627L

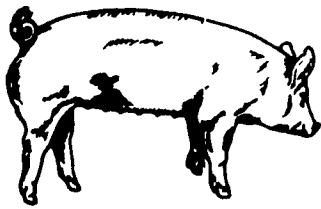
HOUVALE FARMS-

13th YORKSHIRE
PRODUCTION SALE
SEPTEMBER 7, 1984

Sale 6:30 P.M.

Location: Lebanon Area Fairgrounds, Evergreen Road and Cornwall Road, Rocherty Road East off of Route 72, Lebanon, Pa.

Basics never went out of style: with our herd priorities on Health, Production, Soundness, Mothering Ability, and rate of Gain. These are the basic keys to a purebred and commercial hog man's profits. When it comes to Raising Pigs — Yorkshires Write the Book!
YORKSHIRES



Our pen of 4 Boars at Penn State Test Station ave. 2.21 lbs. daily gain. 73 Back fat 4.66 Loin eye 62.33% Lean cuts score of 2 on soundness & underline 112 Index. These pigs were sired by Dallas from the 1983 Type Conference.

SELLING APPROX. 50 BRED GILTS
25 OPEN GILTS
25 BOARS

All animals will be bled and negative to Pseudorabies and Brucellosis so they can go into any state on sale day.

For Catalogue, Write to:

Elwood E. Houser
2150 Quentin Rd., Lebanon, PA 17042
Phone (717) 272-5798 or (717) 273-2921

This is Investment Day
Auctioneer: Col. Harry Bachman
Phone (717) 867-1809

Public Auction Register

SATURDAY
SEPTEMBER 1 10 AM
Public Auction of 40 Acre
Dairy and Poultry Farm,
Holstein Herd, Farm

Machinery, Milking Equip
ment, Mules and Hay
Located in Lancaster Co.,
PA 2 miles south of

Strasburg Rt 896 south,
2nd crossroad right at
Paradise Lane and Ivy Rd
John D & Rebecca Glick,
Owners Steve Peter-
sheim, Auctioneer

Special State Graded FEEDER CATTLE SALES

TUESDAY, AUGUST 28

Holstein and Beef Steers and Heifers

TUESDAY, SEPTEMBER 18

Beef Steers and Heifers Only

TUESDAY, OCTOBER 23

Beef Steers and Heifers Only

TUESDAY, NOVEMBER 20

Holstein and Beef and Heifers

Weight 300 lbs. and up Sales Time 7 P.M.

AMHERST LIVESTOCK MARKET

Rt. 151 and U.S. 29

804-946-7245 Amherst Va. 804-846-3280

Manager: Esthmus Carson, Jr.

AUTOTORE'S AUCTION

SATURDAY, SEPTEMBER 1
starting at 10 A.M.

Location-Benton R.D. 2 (Jamison City) 1 mile pass Central-Off Rt. 487 North of Benton pass Scout Camp. Follow auction Signs.

Old Jamison City General Store

Unusual lg. brass bed w/brass canopy, brass & iron beds, iron beds, Oak Post Office Desk W/pigon holes, Oak mail receiver, oak wall telephone, Columbia grey 6 lid cook stove, oak sideboard, 6 oak chairs, Larkin side by side, Angelophone table top record player, oak record cabinet, lg. pine wardrobe, oak dressers, oak wash stand, double wardrobe, rocking chairs, pot belly stove, oak candy cases, unusual double corn sheller, 4 pc. depression bedroom suite, treadle sewing machine, 4 pcs. wicker, 2 wheel Enterprise coffee grinder, wire shoe rest, new Peerless dye box, tin tea bins W/mirrows, Stimp computer balance scales, balance & beam scales, brooder lights, chicken crates, leather mail bags, Maytag wringer washer, parlor stands, high chair, East Lake mirror, GERMAN CHINA DOLL M. Sweetheart-B.J. Co., celluloid Betty Boop doll, Celluloid doll, German composition doll, child's sewing baskets, celluloids dresser set, sml. tin buggy, wash bowl & pitcher, min. tea set, Bavarian dish, carnival cup, pattern glass, kerosene lamps, lanterns, mixing bowls, crocks, jugs, bottles, 2 man saws, sml. oriental fire screen, min. pocket knives, old tins, skillets, violin, picture frames, Craftsman table saw W/1 hp. motor, Sears 1 1/2 hp. water cooled engine W/Mico Mag., elec. weed eaters, 175 x 14 winter tires, New Home Sewing machine, platform rocker, 5 pc. breakfast set, Frigidaire Apt. elec. range, Crosley Ref., caning jars, 9'x12' rugs, & 11'x18' rugs, plus many unlisted items.

Terms-Cash

Seller-
WILLIAM MATHER

Auctioneers-John Autotore 784-3506
AU-000031-L

John Jr. 784-0381

Cut Me Out & Post Me



REAL ESTATE AUCTION

E. STEWART DAHLHEIMER ESTATE
FARMETTE — ACREAGE
BUILDING LOTS
WEDNESDAY EVENING,
SEPTEMBER 26, 1984

5:00 P.M.

LOCATED: 8 miles north of York, Pa. off Rt. 30 at Bull Rd. - north, 1 1/2 mile north of Hakes Store on Bull Rd. & Canal Rd., east of Dover, Pa. or west of Rt. 83.

TRACT #1- 42.39 acres in Dover Twp. w/springs, 2 wells, 4 car frame garage with hoghouse, 936 ft. frontage on Bull Rd. approx. 1 1/2 area wooded. (Dover School District)

TRACT #2- 11 acres in Conewago Twp. w/2 1/2 story 9 room frame house w/large country style kitchen with bath on 1st floor, frame bank barn w/2 hay mows & 2 barn floors & stone barn yard fence, frame storage shed & other out buildings. Rd. frontage of 854 ft. on Bull Rd. - 809 ft. frontage on butter Rd. (Northeastern School District) (Directly across from Tract #1).

TRACT #3- 3.8 acres, with small wooded area, 475 ft. frontage on Butter Rd., 378 ft. frontage on Mill Creek Rd. (T-839), North-East corner of Butter Road & Mill Creek Road.

TRACT #4- 3 acres with 86 ft. frontage on Bull Rd., 420 ft. frontage on Butter Rd., 378 ft. on Mill Creek Rd. South-East corner of Butter Rd. & Mill Creek Rd.

TRACT #5- 2.44 Wooded acres, with 265 ft. frontage on Butter Road.

TRACT #6- 2.74 Wooded acres, with 262 ft. frontage on Butter Road.

NOTE: Tracts #3, 4, 5, & 6 are approved for Sewer Systems & are located in Conewago Twp., York Co., Northeastern School District.

All tracts are located in agricultural zone. For inspection & information call 292-1566 or 764-3271.

TERMS: 10% Down, Balance within 45 days.

E. STEWART DAHLHEIMER ESTATE

Executors: Clark E. Dahlheimer
Raymond H. Dahlheimer

ATTORNEY: J. Eugene Stumpf
AUCTIONEER: Blaine N. Rentzel
Emigsville, Pa.
Ph. 764-6412

Pa. Auctioneer's Lic. #761

TROXELVILLE ANTIQUES

Announcing

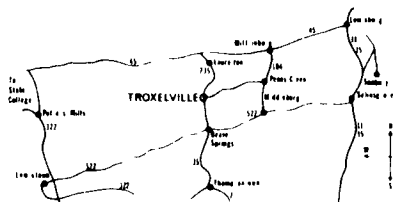
TWO DAY ANTIQUA AUCTION



LABOR DAY & TUESDAY
SEPTEMBER 3 & 4 - 9:30 EACH DAY
TO BE HELD AT TROXELVILLE ANTIQUES
TROXELVILLE, PA.

The Largest Selection of Antique
Furniture in Central Pa.

TROXELVILLE
ANTIQUES
Phone (717) 658-7141



LABOR DAY, SEPTEMBER 3 - 9:30 A.M.
PRIMITIVES OF ALL DESCRIPTION - PARTIAL LISTING

35 Quilts; Corner Cupboards; Blanket Chests; Wood Boxes; Dropleaf and Gateleg Tables; Very Fancy Early Dutch Cupboard; High and Low Dry Sinks; Fruit and Jelly Cupboards; Washstands; Cradles; Flour Chests; Dough Boxes; Wall Mirrors; 1 and 2 Drawer Stands; Slant Top Counter Desks; Plank Bottom Chairs and Rockers; Benches; Quilt Frames; Farm Tables; School Bells; Sprinning Wheel; Large Hand Wagon; Corn Sheller; Straw Cutter; Cabbage Cutter; Miniature Furniture; Oriental Type Import Rugs; Hooked Rugs; Strip Carpet, Old Cloth; Hanging Domes; Iron and Brass Butcher Ladles, Strainer, Forks, etc.; Butter Bowl, Prints, Paddle; Primitive Tools; Metal Toys; Cherry Seeder; Peanut Cans; Flat and Waffle Irons; Tin Ware; Graniteware; Stuffed Animals; 7 Bisque Dolls, signed; Fancy Dolls; Coal Oil Lights; Baskets; Musical Instruments; Oil Paintings; Carnival, Depression, Pressed Glass; Mantel and Shelf Clocks; Shirley Temple Pitchers; Bennington Ware; Sponge Ware; Decorated Crocks.

TUESDAY, SEPTEMBER 4 - 9:30 A.M.
Selling From The 40' x 300' Furniture Building

Leaded Windows; Safe with Brass Key; Oak Dressers, Washstands, Chest of Drawers, Side Boards, Tables, Bedroom Suites, Rolltop Desks, Child's Rolltop Desks, China Closets; Larken Desk; Ladies Desk; Hall Racks; Wardrobes; Library Tables; Marble Top Dressers; Princess Dressers, Framed Mirrors; Governor Winsor Desk; 1930 c. Dining, Bedroom Suites; School Desks; Buffets; Victorian Couch; Showcases; Church Benches; Kitchen Cabinets; Side-by-Side; Sewing Machines; Stands; High Chairs; Ice Boxes; Iron and Brass Beds; Bakers Cupboard; Flat and Dome Top Trunks; Floor Lamps; Stack Bookcases; Several Beautiful Organs; Miscellaneous Wicker; Chairs; New Oak, Cherry, Walnut Corner Cupboards in 9 and 12 Lite; Round Room Stoves; Cookstoves; Organ Stool; Plus Hundreds of Miscellaneous Pieces.

TERMS: Cash, Travelers Checks, or Certified Checks.

No out of state checks except those having an established account with owner or auctioneer.

OWNER: JOE HERMAN
(717) 658-7141

Earl Eash, Auctioneer — #AU000244L
Bill Mattern, Apprentice Auctioneer — #AA001308L
SALE HELD INDOORS — CHAIRS FURNISHED — LUNCH SERVED