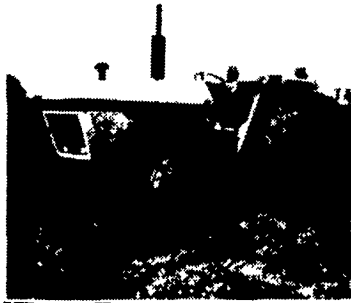


# USED TRACTORS

**SPECIAL 10% Financing OR Waiver Till January 1, 1985**



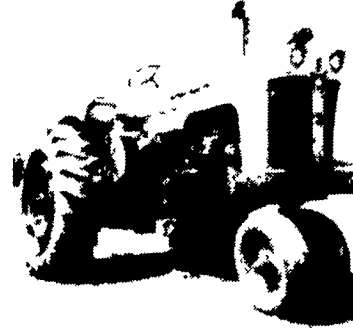
**CASE 1690 DIESEL 90 H.P., 598 Hrs., 18.4x38 - 85%, Dual Remotes, Front Wts., Ex. Tractor, Like New \$15,700**



**CASE 1290 DIESEL 55 H.P., 1983 Model, Independent PTO, Tires Like New, 250 Hrs. \$9,850**



**CASE DC GAS Wide Front, 12.4x38 - 10%, 2 Rear Wts. \$695**



**CASE 730 DIESEL 1965 Model, Tricycle Front, Power Steering, 540 PTO, 15.5x38 - Smooth Double Remotes, Comfort King \$4,850**



**LEYLAND 270 70 H.P., Approx. 4900 Hrs., Low Engine Oil Pressure, 18.4x30 - 75%, 1976 Model, Paint Fair, 3 pt. Hitch \$2,450**



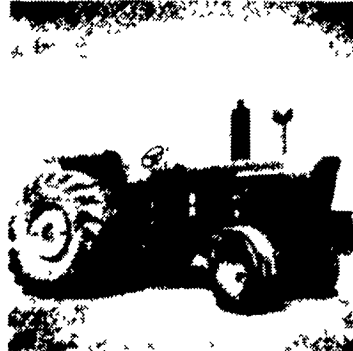
**A.C. 160 DIESEL 42 H.P., Front Mtd Pump Kit, A.C. Loader w/60" Fork, Engine Needs Work, Nice Looking Tractor \$4,800**



**2290 CASE 140 H.P., 20.8x38 - 30%, Double Remotes, 1380 Hrs., No Wts. \$21,300**



**CASE 1070 DIESEL Approx. 1560 Hrs., 110 H.P., 20.8x38 - 45%, Nice Shape \$13,950**



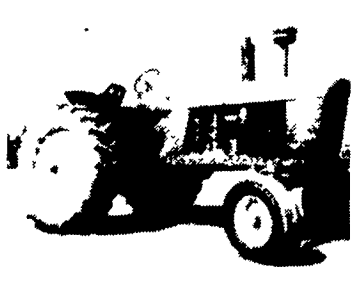
**JOHN DEERE 5010 125 H.P., 540/1000 PTO Kit, 24.5x32 - 15%, 2 Remotes, Good Condition, Rear Wts., Good Motor \$6,500**



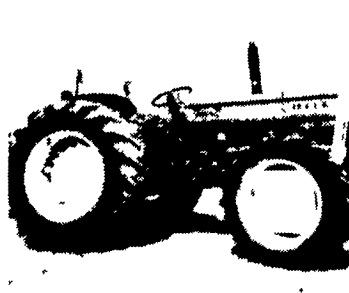
**IH 1066 MFD 125 H.P., Dual Remotes, 1972 Model, Hydrostatic Drive, Rear Wts. \$13,500**



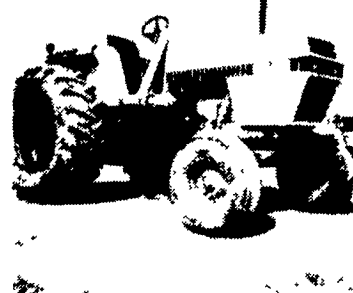
**A.C. 190 XT 105 H.P., 18.4x34 - 60%, Rebuilt Rear, Engine Good \$5,985**



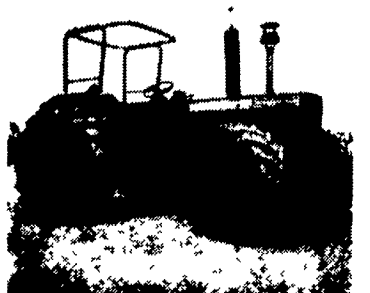
**J.D. 4020 DIESEL 1967 Model, Dual Hyd. Remotes, 15.5x38, Rebuilt Starter \$7,850**



**OLIVER 1365 DIESEL 3810 Hrs., 60 H.P., 16.9x30 - 40%, 9.5x24 - 75%, 3 pt. Hitch, Clean, Local Tractor \$5,800**



**CASE 2090 Power Shift, Approx. 1000 Hrs., 1979 Model, 20.8x38, 540/1000 \$17,650**



**SAME PANTHER 95 S/N PA-TV-7144, 12 Speed Trans., 4 Frt. Wt. 4 Wh. Dr. 3 Pt. 18.4x34 Radials 80%, 16.9x24 Radials 80%, 5 Cyl Diesel, 540-1000 PTO, 2 to 2.5 Gal. Fuel Per Hr. Under Load \$15,900**

## DEMONSTRATION & FIELD DAY

**Tuesday, August 28th From 12 Noon**

at the

### JEFF PONTIUS FARMS

Located along Rt. 147, just south of Sunbury, PA

**You Are Invited To Attend A Hands-On Demonstration Of  
NEW CASE 94 SERIES TRACTOR POWER  
And Minimum Tillage Equipment.**

- Various sizes of tractors and equipment for you to field test.
- Company and dealer representatives will be on hand to answer any questions.

*See You There!*

## BINKLEY & HURST BROS., INC.

133 Rothsville Station Rd., Lititz, PA 17543

Located 1/2 Mile North of Rothsville

**PH: 717-626-4705**

Hours: Mon.-Fri. 7 AM - 5 PM; Sat. 7 AM - 11:30 AM; Sun. Closed - Lord's Day