

# Farm Women

(Continued from Page B28)

The group has scheduled two trips, one to the Baltimore Harbor on October 16 and the other to Sight and Sound on November 10. Anyone interested in attending those trips may contact Ruth Walters.

Michele Harley, an area member of the Daniel Boone Cheerleading Squad, gave a slide presentation of her squad's trip to Dallas to participate in the national cheerleading competition.

The group's next meeting is scheduled for 8 p.m. September 12 at the home of Mrs. Pearl Levengood.

## Berks Society 3

Berks Society 3 and their families met on July 23 at Boyertown Community Park for a clambake.

On August 7 they traveled to Collegeville Inn for a smorgasboard lunch.

The August meeting is planned at the home of Jo Ann Pollock. A youth program is planned.

## Berks Society 4

Berks Society 4 recently held their monthly meeting at the home of Esther Sheeler, Boyertown.

The group is planning to have a lunch stand at Snyder's Public sale on September 1.

The group elected a new nominating committee. They are: Edna Angelstad, Evelyn Becker, and Esther Sheeler.

## Berks Society 7

Berks Society 7 held their monthly meeting at Kauffman's Bar-B-Que Ranch at Rehrersburg.

President Grace Deitz appointed Helen Schaeffer and Joanna Dreibelbis to the nominating committee.

The group gave a donation to the Conrad Weiser Student Loan Association.

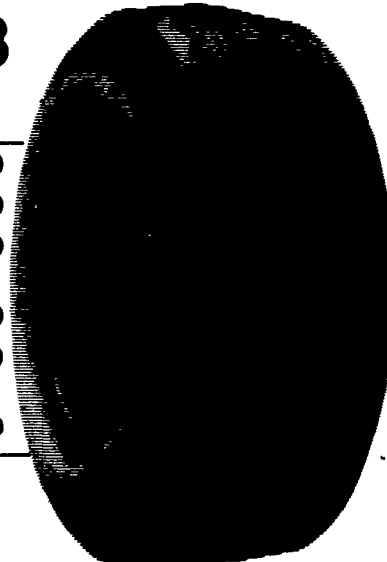
# MUMMAU TIRE PROGRAM FOR 1984 AG PROGRESS



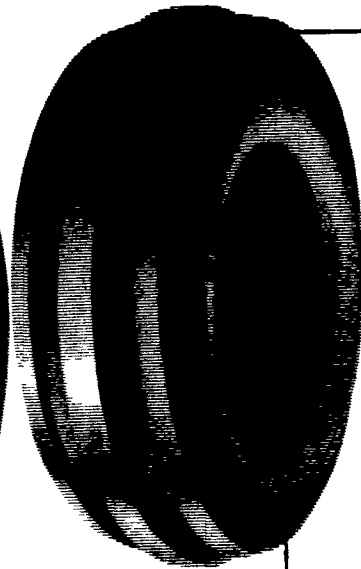
## Loader-Dozer



## Contractor F-3



## Front Tractor



11Lx15 8 ply -	\$80.00
11Lx16 8 ply -	\$92.00
11Lx16 10 ply -	\$98.00
750 800x16 10 ply -	\$80.00
11Lx16 12 ply -	\$130.00
145 - 75 - 16.1 10 ply -	\$225.00

400-12...	\$22.00
400-15...	\$24.00
500-15...	\$31.00
550-16, 4 ply	\$33.00
550-16, 6 ply	\$36.00
600-16, 4 ply	\$37.00
600-16, 6 ply	\$41.00
650-16, 6 ply	\$42.00
75L-15, 6 ply	\$50.00
750-16, 8 ply	\$54.00
750-16, 6 ply	\$50.00
750-18, 6 ply	\$64.00
9.5L-15, 6 ply	\$55.00
9.5L-15, 8 ply	\$60.00
1000-16, 6 ply	\$80.00
11Lx15, 8 ply	\$75.00
1100-16, 8 ply	\$110.00
14L-16.1, 8 ply	\$160.00

### ★ TUBELESS ★

16.9x24 8 ply -	\$265.00
16.9x24 10 ply -	\$330.00
17.5Lx24 6 ply -	\$240.00
17.5x24 8 ply -	\$270.00
15.5x25 12 ply -	\$320.00
17.5x25 12 ply -	\$445.00

### ★ TUBE TYPE ★

14.9x24 6 ply -	\$200.00
14.9x24 8 ply -	\$220.00
16.9x24 6 ply -	\$220.00
16.9x24 8 ply -	\$235.00
16.9x24 10 ply -	\$280.00
17.5Lx24 8 ply -	\$240.00
16.9x28 8 ply -	\$260.00
18.4x28 10 ply -	\$340.00
20.5x25 12 ply -	Call For Quote
23.5x25 16 ply -	Quote
1300x24 10 ply -	\$225.00
1300x24 12 ply -	\$245.00
1400x24 10 ply -	\$255.00
1400x24 12 ply -	\$280.00

1100x16 12 ply tube type 135.00

1100x16 12 ply tubeless 150.00

## Wagon Tires

26 1200x12 4 ply -	49.00
8.5Lx14 6 ply -	41.00
9.5Lx14 6 ply -	44.00
9.5Lx14 8 ply -	49.50
11Lx14 6 ply -	49.00
9.5Lx15 6 ply -	42.00
9.5Lx15 8 ply -	44.00
11Lx15 6 ply -	43.00
11Lx15 8 ply -	47.00

We Ship To You UPS! No Charge

## Skid Loader Tires

700x15 6 ply -	\$65.00
750x15 6 ply -	\$68.00
10-16 5 6 ply -	\$80.00
12-16 5 8 ply -	\$120.00
Steel Shield 10-16 5 6 ply -	\$95.00

Above Tires Shipped To You FREE

11Lx15 8 ply tubeless -	\$50.00
11Lx16 8 ply -	58.00
11Lx16 10 ply tubeless -	74.00
12.5Lx15 10 ply -	75.00
12.5Lx16 14 ply -	85.00
14Lx16.1 12 ply -	140.00
16.5Lx16.1 10 ply tubeless -	160.00

\$5.00 OFF ABOVE WAGON TIRE PRICES

8.3x24	\$95.00
9.5x24	112.00
14.9x24 6 ply	195.00
16.9x24 6 ply	210.00
18.4x16.1 6 ply	245.00
18.4x26 6 ply	340.00
11.2x28 4 ply	152.00
13.6x28 6 ply	225.00

Used Grass Tires In Our Stock

Ask About Our 4 Year Guarantee On Rear Tires Strongest In The Country

## We Install Tires On Your Farm

- Centre Hall • Williamsport
- Sunbury • Allentown
- North Penna. • New Jersey
- Northern Maryland