

Public Auction Register

Closing Date Monday 5 00 P M
of each week's publication

SAT SEPTEMBER 22 9 AM Public Auction Benefit for Fairview Christian School Selling Quilts and new Merchandise Located at the Fivepointville Firehall along Rt 897 and Fivepointville Roy Good, Jr., Randall Kline and Lloyd Kreider, Auctioneers

SATURDAY SEPTEMBER 22 Public Auction of the West Fallowfield Christian School Heifer Sale Steve Petersheim, Auctioneer 717 786-4624

TUES SEPTEMBER 25 7 PM Public Sale of Feeder Cattle and Feeder Pigs at Carlisle Livestock Market exit 12 off I-81, 717-249-4511

THURSDAY SEPTEMBER 27 - 7 AM Public Auction of a Mobile Home and Lot Located along Smokestown Rd between 897 and Reinholds Rd approx 2 miles east of Denver in East Cocalico Twp., Lanc Co., PA Jerry A & Deborah A Zerbe, Owners LeRoy S Horst, Auctioneer

FRI SEPTEMBER 28 - 10 AM Dairy Show, 1 30 PM Dairy Sale Located at the Penns Valley Livestock Auction, Centre Hall, PA Ron Gilligan, Auctioneer

FRI SEPTEMBER 28 - 5 30 PM Gap Auction Antiques and Household Goods sold at every auction Located off Rt. 41, Lancaster Turkey Hill Minit Market, cross RR bridge, Ira Stoltzfus & Son, Auctioneers

SAT SEPTEMBER 29 - 12 Noon Red Carpet Horse Sale Public Auction of Registered Quarter, Appaloosa and Thoroughbred Horses Located at the Cambria Co Fairgrounds Edensburg, PA Kevin Hines and Chris Rowe, Owners Davis and Templeton, Auctioneers

SAT SEPTEMBER 29 - Consignment Heifer Sale to Benefit Elementary Christian Schools Located 6 miles east of Lancaster at the Guernsey Sales Pavilion Larry Kennel, Manager

SAT SEPTEMBER 29 - 11 AM Public Auction of Horses Located at Keister's Middleburg Auction Sales, Inc., Rt 522, 3 miles east of Middleburg, PA, 5 miles west of Selinsgrove, PA Don & Walt Keister, Owners Ray Long & Dave Imes, Auctioneers

SATURDAY, SEPTEMBER 29 9 AM Public Auction Consignment Sale of the Sechrist Sales Co Annual Fall Sale Selling Trucks, Tractors, Farm Machinery, Lawn & Garden Equipment, Tools & Hardware Located on the livestock Auction Market grounds approx 5 miles south of Stewartstown, near New Park, York Co., PA Bob Sechrist, Manager

OCT.

WED OCTOBER 3 - 9 30 AM Show, 12 Noon Sale Annual Cow Show and Sale Located at the Belleville Livestock Market, Belleville, PA Mark Glick, Auctioneer

THURSDAY OCT 4 - Monthly Cow Sale at Mel Kolb, Inc Lancaster Farm, 2220 Dairy Road, Lancaster, PA

FRI OCTOBER 5 - 5 30 PM Gap Auction Antiques and Household Goods sold at every auction Located off Rt 41, Lancaster Turkey Hill Minit Market, cross RR bridge, Ira Stoltzfus & Son, Auctioneers

SAT OCTOBER 6 - Public Auction 10 AM Corner of Lykens and Mountain Rds in Mifflin Township, Dauphin Co., PA, 2nd farm west of Kolva's Sawmill, 1 mile north of Berrysburg, 36 miles NE of Harr 64 acre farm & Farm Equip Floyd E Stine, Peter I Stine & Woodrow W Stine, Owners Mike Deibert, Auctioneer George Deibert, Realtor, Auctioneer

SAT OCTOBER 6 - Public Sale of Antiques at 9 AM Located - Off Rt 30 at Hallam Exit, go south to Rt 462, continue straight on Freysville Rd., go through underpass, 1st farm on right in lane Estate of Ruth Stoner Brinkman Blaine & Nevin Rentzel, Auctioneers

SATURDAY OCTOBER 6 Public Auction of Real Estate Located 1 mile north of White Horse, PA Wimus & Sara Stoltzfus, Owners Steve Petersheim, Auctioneer

SATURDAY OCTOBER 6 - 8 30 AM Public Auction of Real Estate and 100 yrs Untouched Household Goods. Includes Antiques Located 7 miles west of York, along Rt 30 in the village of Thomasville, Jackson Twp., York Co., PA Elizabeth E Wehler, Owner Clair R Slaybaugh, Auctioneer

SATURDAY OCTOBER 6 - 9 30 AM Public Auction of Livestock, Dairy Equipment, Horses, Machinery and some Furniture Located in Snyder Co., 4 miles east of New Berlin, PA, 1 mile east of Cheese Maker on Co. Line Rd Sam Yoder, Owner Mark Glick, Auctioneer

TUES OCTOBER 9 - 7 PM Public Sale of Feeder Cat-

tle and Feeder Pigs at Carlisle Livestock Market exit 12 off I-81, 717-249-4511

WED OCTOBER 10 - 12 Noon Public Auction of the Western PA Sale of Stars Located in Butler, PA

FRI OCTOBER 12 - 1 30 PM Public Auction of State Grade Consignor Feeder Pig Sale Located at the Carlisle Livestock Market, Inc

FRI OCTOBER 12 - 5 30 PM Gap Auction Antiques and Household Goods sold at every auction Located off Rt 41, Lancaster Turkey Hill Minit Market, cross RR bridge, Ira Stoltzfus & Son, Auctioneers

SAT OCTOBER 13 - 9 AM Public Auction of a 60 Acre Farm, Farm Equipment, Antiques and Household Goods Located in Brecknock Twp., Berks Co Carl H and William J Moore, Owners Horning Farm Agency, Inc., Auctioneers

SAT OCT 13 - Public Auction of Farm Machinery and Related Items Located 6 miles south of Richfield off Rt 104 Elwood Flowers, Owner Bryan D Imes, Auctioneer

SAT OCTOBER 13 5 PM Public Consignment Auction of Farm Toys and Others Located at the Lancaster Mennonite School gym, along Rt 30 east. Also toy show from 9 AM to 9 PM w/small admission charge Robert & Jeff Martin, Auctioneers 717-656-7770

Dairy and Livestock Sales

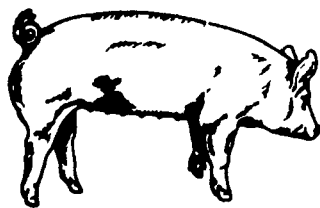
HOUVALE FARMS

13th YORKSHIRE PRODUCTION SALE
SEPTEMBER 7, 1984
Sale 6:30 P.M.

Location: Lebanon Area Fairgrounds, Evergreen Road and Cornwall Road, Rocherty Road East off of Route 72, Lebanon, Pa.

Basics never went out of style: with our herd priorities on Health, Production, Soundness, Mothering Ability, and rate of Gain. These are the basic keys to a purebred and commercial hog man's profits. When it comes to Raising Pigs — Yorkshires Wrote the Book!

YORKSHIRES



Our pen of 4 Boars at Penn State Test Station ave. 2.21 lbs. daily gain. 73 Back fat 4.66 Loin eye 62.33% Lean cuts score of 2 on soundness & underline 112 Index. These pigs were sired by Dallas from the 1983 Type Conference.

SELLING APPROX. 50 BRED GILTS
25 OPEN GILTS
25 BOARS

All animals will be bled and negative to Pseudorabies and Brucellosis so they can go into any state on sale day.

For Catalogue, Write to:

Elwood E. Houser
2150 Quentin Rd., Lebanon, PA 17042
Phone (717) 272-5798 or (717) 273-2921
This is Investment Day
Auctioneer: Col. Harry Bachman
Phone (717) 867-1809

CONSIGNMENT SALE

OF TRACTORS-
FARM EQUIPMENT-TRUCKS
THURSDAY, AUGUST 23, 1984

9:30 A.M. Rain or Shine
Location: 4 miles West of Kenton, Del. at Everetts Corner, Rts 300 & 44.

Consignments open to Everyone
Receiving equipment on August 20, 21, 22 from 8 A.M. until 5 P.M. each day.

For listing of equipment in paper or for more information call:
Marvel Everett 301-653-7532 or
C.T. Seuse 302-653-7530

THE HOTLINE CONNECTION

Selling 75 lots of the finest Polled Hereford seedstock in the nation today.



Featuring The Progeny and/or Service Of:

PRL 930K Hotline 347N, Canadian Agribition Champion
Enforcer 107H, APHA Superior Sire
Victorious K47 U81, National Champion
FLF King Pin 2003, Reserve National Champion
Vindicator, Reserve National Champion

OFFERING INCLUDES:
28 Cow/Calf Pairs
20 Yearling Bred Heifers
20 Fall-Calving Cows
7 Herd Bulls

Herd is Certified & Accredited
Contact Us For Further Information, Motel Reservations, Or For A Free Copy Of Our Sale Catalog

FALKLANDS FARM

RFD 1 Schellsburg, PA 15559
814-733-2818
Mr. & Mrs. Leon Falk, Jr., Owners
Paul Stayton, General Manager
Located 12 miles west of Bedford on Hwy. 30

LEBANON COUNTY HOLSTEIN SALE

FRIDAY, AUGUST 24, 1984 7:00 P.M.

To be held at the Lebanon Area Fairgrounds, corner of Rocherty and Cornwall Rds., Southeast of Lebanon off rt. 72, Lebanon, Pa. From Pa. turnpike take route 72 north appx. 5 miles and turn right onto Rocherty Rd. to Cornwall Rd. to fairgrounds on right.

48-REGISTERED HOLSTEINS-48
40 Bred Heifers-due in fall-8 recently fresh 2 & 3 yr. olds

FEATURING

CHAIRMAN DAU. - Dam VG 86 Elevation with 5-8 365 26,286 3.6 953. Next dam VG 86 Performer and a maternal sister to Benbro Kingpin Polly EX96. Due in Dec. Marlin Bennetch, Myerstown.

VALIANT DAU. - Already scored GP83 in first lactation with 2-3 355 14,842 4.2 618. She sells fresh as a 3 yr. old. Dam by Elevation. Lester Martin, Frederickburg.

TWO DAUGHTERS OF LIME HOLLOW ELEVATION MARS - 2 yr. old fresh in June at 2-1 and milking well. Her dam has 5-3 365 20,883 3.7 776 Mike Fair, Lebanon. Nov. 82 heifer from GP83 Sunshine Chief dam with 4-2 305 20,470 4.3 882. Next dam 7-0 365 26,514 3.7 979. Bred to Bell. Ken-Ire Holsteins.

JEMINI DAUGHTER - Fresh 2 yr. old from a VG Great View Apollo Beethoven dau. with 5-3 365 23,223 3.5 813. Next dam GP84 with over 18,000. Paul Miller & Sons, Linglestown.

From an EX. VIRGINIAN DAU. - Sired by Russeldale Persauder Reuben and bred to Tony. From a deep cow family with 4th dam over 225,000 and still producing. Vincent & Juliet Wagner, Jonestown.

TRIUNE COMPLETE DAU. - Fresh 2 yr. old from a VG Astronaut dam with 3 records over 20,000 and 150,000 lifetime. Second dam 3E-90 with 4 records over 20,000 and 165,000 lifetime. From the heart of one of the best families in the herd. J. Melvin Brandt, Hershey.

BELL DAU. - Due Sept. to a Glendall son. Her dam is VG85 at 2 yrs. by Elevation with 2-3 328 16,649 3.6 706. Next dam VG87 Astronaut. Dale Hostetter & Sons, Annville.

TRADITION dau. - From a GP83 Wayne Spring with 2-1 330 18,052 3.6 652. Bred to Bell. Raymond & Marlin Getz, Myerstown.

VERY DAU. - Dam is a GP82 Rocket with 3-0 331 20,124 3.6 720. Heifer is due Sept. to Stewart. Second dam over 22,000. Timothy Tyson, Palmyra.

Other sires include Marvex, Superior, Gay Ideal, Persauder, Marlu Perseus Chief, Lucky Royal Star Admiral and Brookfield Falcon.

SALE UNDER COVER CATTLE PREGNANCY TESTER ELIGIBLE FOR INTERSTATE

Sale sponsored by
LEBANON COUNTY HOLSTEIN CLUB

Harry H. Bachman-Auctioneer 138 College Ave., Annville, Pa. 17003
717-867-1809 Lic. AU-000033-L

Dale L. Hoover-Pedigrees RD 4 Box 805 Lebanon, Pa. 17042 717-867-2489

GOOD FOOD AVAILABLE. ANIMALS CAN BE INSPECTED EVENING BEFORE