

Public Auction Register

Closing Date Monday 5:00 P.M.
of each week's publication

FRI SEPTEMBER 7 7:00 P.M. Holstein Promotional Sale at New Holland Sales Stables, Inc. 12 miles East of Lancaster off Rt. 23 in New Holland, PA. Abe Diefenbach, Manager

FRI SEPTEMBER 7 9 AM Public Auction Hardware, Tools, Machinery and Seeds. Located between Schaefferstown and Lebanon, along Rt. 897, near Iona, Lebanon County, PA. Hamilton Bank. Pursuant to security agreement with Boyd Seed Center, Inc., Owner Paul E. Martin & John D. Stauffer, Auctioneers

FRI SEPTEMBER 7 9 AM Public Auction of Machinery, Seeds, Hardware & Tools. Located between Schaefferstown and Lebanon, 1 block off Rt. 897 near Iona, 306 Iona Rd., Lebanon County, PA. Hamilton Bank, Owner Pursuant to Security Agreement with Boyd Seed Center, Inc. Paul E. Martin & John D. Stauffer, Auctioneers

FRIDAY, SEPTEMBER 7 6:30 PM Public Auction of Houvale Farms 13th Yorkshire Production Sale. Located in Lebanon Area Fairgrounds, Evergreen Rd. and Corn wall Rd., Rocherty Rd. east off of Rt. 72, Lebanon, PA. Elwood E. Houser, Owner. Col. Harry Bachman, Auctioneer

SAT SEPTEMBER 8 10 AM Public Auction of Real Estate, Household Furnishings, Antiques, Collectibles, Farm Equipment and Tools. Located

in the Village of Hepler, Upper Mahantongo Twp., Schuylkill Co., PA, 1/4 mile south of Agway store, 6 miles east of Klingerstown, 2 miles west of Rt. 125, turn west at Purple Pump Cafe. Samuel R. Smith Estate. Shirley Welker & Charles S. Smith, Administrators. Mike & George Deibert, Auctioneers

SATURDAY SEPTEMBER 8 9 AM Public Auction of Real Estate, Antiques, Collectibles, 1968 Cadillac Sedan De Ville, 1968 American Motors 440 Station Wagon, 1960 Jeep, Cub Cadet 800 Riding Tractor, Household Items, Machinist's Tools, Coins, & Misc. Items. Located at 999 East Union St., Millersburg, PA. Upper Dauphin Nat'l Bank, Executor of the Katherine Shatto Estate. Dockey, Dockey, & Deppen, Auctioneers

SATURDAY SEPTEMBER 8 9 AM Public Auction Benefit of Geet Ministry, formerly Gospel Echo Teams. Steve Peterheim, Auctioneer. 717-786-4624

SATURDAY SEPTEMBER 8 9 AM Public Auction of Real Estate, Farm Machinery, Antique Tools & Household Articles. Located in R.D. 1, Airville, PA. Approx. 9 1/2 miles southwest of Red Lion, turning west off Rt. 74 in the village of Collinsville, proceeding about 1 1/2 miles to Fulton Rd. on the left. Follow Fulton Rd. about 1/2 mile to farm and

place of sale on left in Lower Chanceford Twp., York Co., PA. Ernest R. Tomlinson Estate. Viola G. Tomlinson, Owner. Bob & Tom Sechrist, Auctioneers

SATURDAY SEPTEMBER 8 - 10 AM Public Auction of Welding Shop Equipment, Trucks, Tools, Steel, Etc. Located at 801 Manchester Ave., Media, PA. From Rt. 1, Downtown Media, turn east on Manchester Ave. about 4 blocks to sale. H. Leslie Parlette, Owner. White side and Assoc., Auctioneers

TUESDAY SEPTEMBER 11 7 PM Public Sale of Feeder Cattle and Feeder Pigs at Carlisle Livestock Market. Exit 12 off I-81, 717-249-4511

TUESDAY SEPTEMBER 11 11 AM Public Auction of a 60 Acre Dairy Farm, Milking Equipment and Harvesting Silos. Located in Bern Twp., Berks Co. From light in Leesport at Rt. 61 take Main St. West to Grange Rd., then 1 1/2 miles to property. Mat thew L. and Mary K. Degler, Owners. Horning Farm Agency, Inc., Auctioneers

FRI SEPTEMBER 14 1:30 PM Public Auction of State Grade Consignor Feeder Pig Sale. Located at the Carlisle Livestock Market, Inc.

FRI SEPTEMBER 14 7 PM Public Auction of the District Relief Heifer Sale for the Church of the Brethren. Located at the Lebanon Fairgrounds, Lebanon, PA. Claire Kreider, Manager

FRI SEPTEMBER 14 1:30 PM Public Auction of State Grade Consignor

Feeder Pig Sale. Located at the Carlisle Livestock Market, Inc.

FRI SEPTEMBER 14 7 PM Public Auction of the District Relief Heifer Sale for the Church of the Brethren. Located at the Lebanon Fairgrounds, Lebanon, PA. Claire Kreider, Manager

FRI SEPTEMBER 14 5:30 PM Gap Auction Antiques and Household Goods sold at every auction. Located off Rt. 41, Lancaster Turkey Hill Minit Market, cross RR bridge, Ira Stoltzrus & Son, Auctioneers

SATURDAY SEPTEMBER 15 - 9:30 AM Public Auction of Real Estate, Equipment, Trucks, Machinery Parts, Feed, Hardware, Tools & Antiques. Located approx. 10 miles east of Exit 1 off I-83 on PA Rt. 851 in

the village of New Park, PA. Anderson Bros. Feed Co., Lee W. Manifold, Owner. Bob & Tom Sechrist, Auctioneers

SATURDAY SEPTEMBER 15 - 12 Noon Public Auction of a Young Herd Dispersal of 33 Head of Cattle and Dairy Equipment. Located 2 1/2 miles southeast of Taneytown, Carroll Co., MD. Take Trevanion Rd. at Taneytown Bank, go 1 1/2 mile to Otterdale Mill Rd., go south 1 1/3 mile to sale. Mr. & Mrs. Samuel Cool, Owners. Calvin L. Amoss, Auctioneer

MONDAY, SEPTEMBER 17 - 12 Noon Public Auction of Valuable Real Estate "Horse Farm", Horses and Equipment. Located in Harrington, Del., Rt. 13 northbound to Callaway Furniture Store, turn left thru stop sign to Rt. 279. Turn left, first

place on left. Mr. & Mrs. J.D. Dennis, Owners. Carroll Sales Co., Inc., Auctioneers

Harry Barrett, Anthony Carroll & Chester Lee Carroll

REAL ESTATE, FARM MACHINERY, ANTIQUE TOOLS & HOUSEHOLD ARTICLES

Of the late Ernest R. Tomlinson of R.D. 1, Airville, PA.
SAT. SEPT. 8, 1984 at 9 A.M.

Located approx. 9 1/2 miles southwest of Red Lion, turning west off Rt. 74 in the village of Collinsville, proceeding about 1 1/2 miles to Fulton Rd. on the left. Follow Fulton Rd. about 1/2 mile to farm & place of sale on left in Lower Chanceford Twp., York Co., PA. Watch for signs.

106 Acre Farm REAL ESTATE 106 Acre Farm

Real estate consists of approx. 106 acres of which about 85 acres are choice farming land in high state of cultivation w/balance in pasture & unharvested timberland.

Improvements include a lg. 9 room 2 1/2 story frame farm house, lg. bank barn, corn shed & other necessary outbuildings. Here is truly a farmer's farm w/gentle rolling chester loam soil, contoured & growing excellent crops.

For inspection by appt. please call 717-862-3737. Terms 10% down day of sale w/balance to be paid on or before Jan. 2, 1985.

Bob & Tom Sechrist, auctioneers
Anderson & Sechrist, clerks

Lic. # - 820 & 821L
Owner
VIOLA G. TOMLINSON
Airville, PA

Not responsible for accidents

SPECIAL COMBINE ABSOLUTE AUCTION

FRI., AUGUST 31, 1984 9:30 A.M.

Lumberton, N.C. 4 mi. S. of I-95 on Highway 211.

OWNER: NEW HOLLAND CREDIT CORP. and others

COMBINES will sell at 11:00 sharp

COMBINES are late model and low hour

(Your are welcome to check them before sale date.)

NH 4 TR 85 s, 2 TR 75 s, 6 TR 70 s, NH 1400 Gleaner, FK 2 F2 M2

MK E 2 JD 6600 3300, MF 550 510 300 s, IH 715 815 #1460 80

PT Oliver 525 Case 660 258 Farm Tractors 1978 Timberjack

1500 Loader 5 Trucks 150 items of farm equipment D5 Cat

Dozer

NOTE: We will have identified consignments combines trucks and equipment at this sale

TERMS: CASHIER'S CHECK OR LETTER FROM BANKER

ALL ITEMS SOLD AS IS DAY OF SALE

NO WARRANTY. Neither New Holland or Meekins Auction Co offers any warranties express statutory or implied, including any implied warranty of merchantability. All goods are used second hand and are sold as is, where is.

FOR MORE INFORMATION CONTACT,

MEEKINS AUCTION CO.

Route 5, Box 785M, Lumberton, N.C. 28358

(919-739-0547) NCLN 858

PUBLIC AUCTION

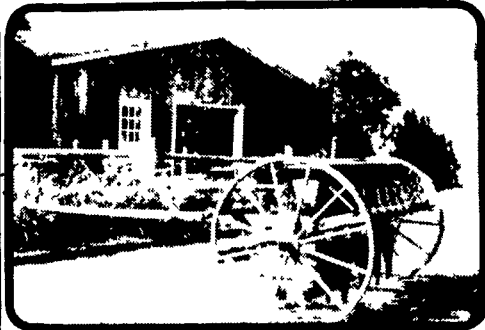
OF CARRIAGES, SLEIGHS & ANTIQUES
AUGUST 22, 1984 - 5:00 P.M.

Collection of brass tools & assorted antiques
AUGUST 23, 24 & 25 1984
STARTING 9:30 A.M. EACH DAY

Located at Martins Sales Pavilion, two miles East of Intercourse, on the corner of Route 340 and New Holland Roads, Lancaster County, Pennsylvania.

Horse drawn farm machinery including an old Allis-Chalmers manure spreader; plows; grain drills; blacksmith & primitive tools; carriage & wagon parts; complete silver saddle outfit; carriage lamps; wagon wheels; ox yokes; tie weights; bits; rosettes; work & driving harness (horse & pony size); coaching appointments; whips; horse related books; lap robes; soap box racer; church bell; roller coaster cars & park benches from Rocky Springs Park; running gears; & many useful items & collectibles for the riding & driving enthusiast & persons involved in building or restoring carriages & sleighs.

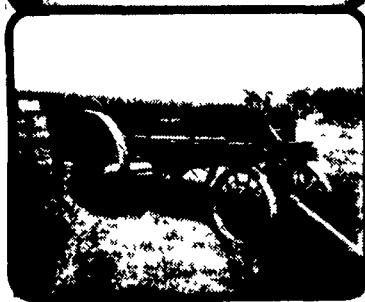
Primitive Grain Drill



Allis-Chalmers Manure Spreader



Roller Coaster



Jeweler's Oak Work Bench

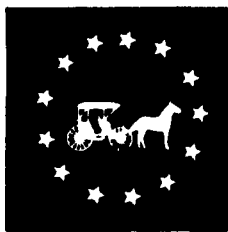
Approx. 300 horse drawn; carriages & sleighs include: wagonette break by Burlington Carriage Co.; Geo. IV phaeton (5/8 size); restored pony back-to-back trap; 2 new 3-seat surreys; high wheel sulky; fine harness carriage; shooting break; sev. wagonettes; restored 4-wheel governess cart; Bronson wagon; Hanson cab; Harewood gigs; Irish jaunting cars; 4-pass. surreys; restored swell body cutter; restored ladies phaeton; brougham; new vis-a-vis; restored Jenny Lind; sailor's wagon; sev. Landaus; ralli car; restored top buggys; Ky. breaking carts; new breaking carts; Governess carts; farm & hay wagons; to name a few of the various types.

1971 International Lodestar 1700 horse truck, 4-door, 6 pass. cab; Holiday travel trailer; flat bed carriage & utility trailers; 1972 Mustang Convertible.

One session on Thursday at 10 AM of antique furniture & misc. antiques, primitives, glassware, tinware, general store items, etc. Good quality antiques accepted for this session until start of the auction.

TERMS: CASH, CERTIFIED CHECKS OR TRAVELERS CHECKS.

For additional information regarding this specialized auction, please contact:



Martin Auctioneers, Inc.

UPCOMING CARRIAGE AUCTIONS!!

October 25, 26 & 27, 1984 - Martins Sales Pavilion, Intercourse, PA
November 24, 1984 - The late Evan K. Shaw Carriage Collection (Metlox Potteries), at Orange Co. Fairgrounds, Costa Mesa, California.
January 12, 1984 - Consignment Auction at Orange Co. Fairgrounds, Costa Mesa, CA.

Larry L. and Paul Z. Martin, Jr.
P.O. Box 477
Intercourse, Pa. 17543
717/768-8108
Martin Auctioneers, Inc.-AU001137-L
Larry L. Martin-AU-000578-L
Paul Z. Martin Jr.-AU-001863-L



FARM MACHINERY AUCTION

JD 4230 - Ford ldt. tractor - Mack truck & Trailers

SATURDAY, AUGUST 25, 1984
At 12 Noon

For Joe Hays (White Gate Farm) on Trannersbrook Rd., 1/4 mi. off Furnace Rd., 1/4 mile off Rt. #24. 2 miles West of Chester, N.J. from Rt. #206 traffic light. Arrows Posted!

No Small Items
12 Noon Tractors

John Deere 4230 DL tractor W.F. 3 PTH. 4 post open cab, Ford 3400 DL 3 PTH w/Ford H.D. front end loader, Farmall M w/N.I. #316 mtd. 2 row corn picker, J.D. A tractor for parts.

TRUCKS & TRAILERS

1969 Mack R600 DL truck tractor, tandem w/wet line, duplex trans. Brown 45 ft. Alum. box trailer 13.6 ft. high, Owens 40 ft. single drop flat bed trailer tri axle, 1978 Dodge power wagon 4x4 w/winch, crew cab V8 auto trans and dump pickup bed.

FARM MACHINERY

Gehl #250 manure spreader used 8 mos. like new 250 bu., Gehl 100 grinder mixer w/hyd. auger A-1. J.D. 7000 4 row maxi merge corn planter w/insect. boxes, J.D. #35 chopper w/1 row corn, direct cut and haylage hds, Gehl Hi Throw hopper blower, Hesston #10 hay stakhand hay stacker and hyd. hay stack mover, snow plow & frame for 4230 heavy duty, Coby chuck wagon, Coby 16 ft. Kicker wagon, Little Giant 42 ft. 6" grain auger w/motor, N.H. 256 rake needs work, Squeeze chute for cattle. Plan now to attend this sale!

Inspection 1 week before Sale!

TERMS Cash or Good Check w/proper I.D. Paid in Full Sale Day! Out of State Buyers - Cash or Certified Funds or Valid Bank Letter stating amount you can spend Addressed to Joe Hays Farm Sale Aug. 25, 1984.

Owner
JOE HAYS

Sale Conducted by:
Col. Fred R. Daniel Auctioneers Inc.
Neshanic Sta., N.J.
201-369-4784