

Photo highlight from 1983 Ag Progress



The top selling boar in last year's Performance Tested Boar Sale was this Berkshire consigned by Clayton Winebark, shown on right. Purchasers include J. Richard Townsend and Debbie and Shelly Townsend..

19 food vendors at Ag Progress

ROCK SPRINGS — If you get hungry while viewing the many activities at Penn State's Ag Progress Days, don't worry — 19 food vendors will be offering a wide selection of Pennsylvania-made foods. According to Russ Seward, coordinator of food sales, these local specialties will sell at very reasonable prices.

Among the many treats will be maple ice cream sundaes available from the Wayne County chapter of the Pennsylvania Maple Producers and honey-sweetened ice cream from the Pennsylvania Beekeepers Association. Penn

State mushrooms will also be sold. The State College Lions Club will be offering them breaded and with cheese sauce. The Club will also be passing out mushroom recipes and nutrition information.

In addition, a new dairy product made from Ultra High Temperature treated milk will be introduced. "Sip Ups" come in seven flavors, all with vitamins A and D added. Because they do not have to be refrigerated until just prior to drinking, Sip Ups are handy for picnics and backpacking.

Mike shakes, beef sandwiches, hamburgers, french fries and

more will be available at Ag Progress Days. Come join the event at Rock Springs Agricultural Research Center, nine miles southwest of State College on Route 45. Parking and admission are free. The show runs from 9 a.m. to 5 p.m., Tuesday through Thursday.

Hay Creek Valley

(Continued from Page E32)

early-American craftsmen in southeastern Pennsylvania. Potters, quilters, calligraphers, furniture makers, ink makers, paper makers just to name a few. Hay Creek Valley craftsmen are renowned for their work. These craftsmen must meet strict standards of authenticity and quality before they are invited to participate in the festival.

Occupying another section of the 25-acre festival grounds is the technological history exhibit. Visitors can walk up to and examine more than 200 turn-of-the-century stationary gasoline engines, primitive tractors and steam traction engines.

Most of these engines are in mint condition after being restored by association members. The engines will be running and many will be powering machinery during the festival.

The steam power section will have numerous exhibits and demonstrations of farm activities such as a large sawmill in operation, wheat threshing feed grinding and the milling of corn meal. All these jobs will be done with energy supplied by huge steam engines some weighing as much as 17 tons.

Visitors can round out their study of Historic Joanna Furnace by taking the self-guided walking tour. At various locations interpreters will discuss the process of iron making at Joanna and the

activities that took place in each of the buildings. Numerous period photographs of the furnace community, archaeological artifacts found on the site, and actual objects cast at Joanna Furnace will be on display. Casting demonstrations will occur periodically and colliers will be making charcoal as it was made to fuel the furnace.

Each day at noon and again at 5 p.m. steam whistles announce that it is time to eat. And how one can eat! Delights such as open-fire cooked soups, chicken pot pie, famous Hay Creek Apple Butter and moon pies will be available. Visitors will enjoy wholesome, delicious food prepared from early American recipes—just as when Joanna Furnace was in blast. Additionally, all types of contemporary foods will be available as well.

Music is always a major part of the Fall Festival. The music will be performed on stage and throughout the festival grounds. Over a dozen musicians will be performing period music informally at various locations.

Two of the musical highlights of the weekend will include a hoedown on Friday evening at 8 p.m. Good old time music will be supplied by Linsey-Woolsey, one of the Philadelphia areas favorite folk groups. On Saturday afternoon from 5 to 7 p.m., the New Holland Band will perform on stage. This performance will bring back the flavor of the early 20th century "concerts-in-the-park". The \$2 admission to the festival grounds entitles visitors to attend all musical and other stage presentations.

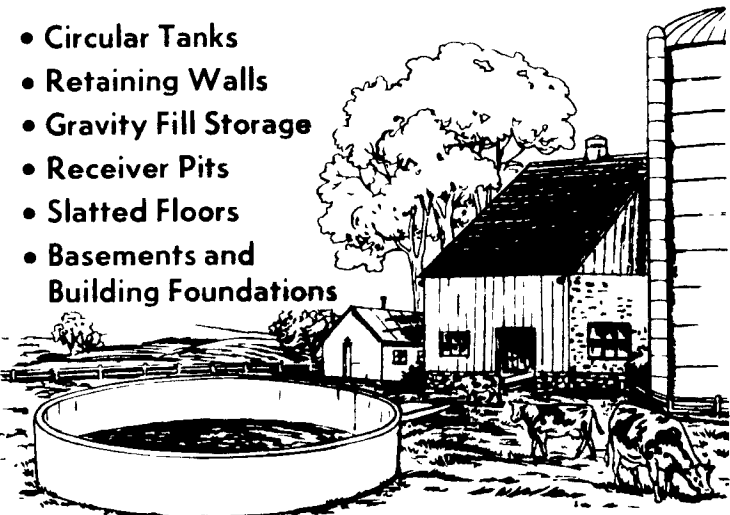
On Sunday morning at 8:30 a.m. an old time church service will be held outdoors. Old favorite hymns will be sung to the accompaniment of a century-old pump organ. The weekend of September 7, 8 and 9 promises to be an exciting time for everyone regardless of age. Raindate for severe weather conditions only will be Sept. 14, 15 and 16.

COME ON YOU GUYS MOVE OVER!

NEED MORE ROOM?
Read The Real Estate Ads
In Lancaster Farming's
Classified Section

POURED REINFORCED CONCRETE CONSTRUCTION

- Circular Tanks
- Retaining Walls
- Gravity Fill Storage
- Receiver Pits
- Slatted Floors
- Basements and Building Foundations



SIZES & LAYOUTS TO YOUR SPECIFICATIONS

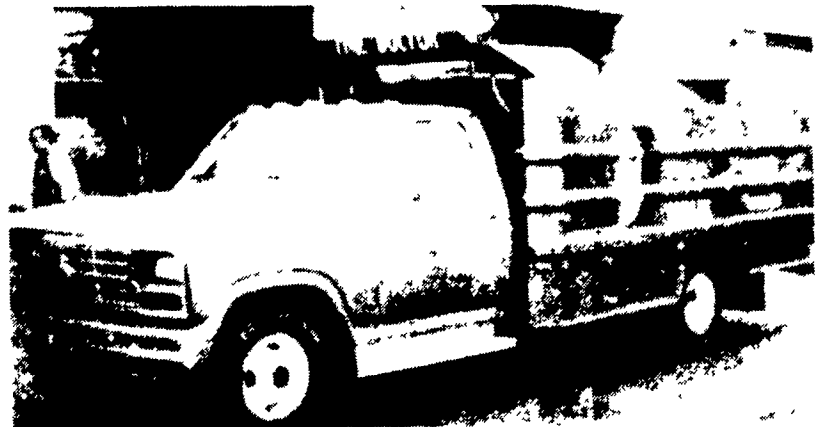
We are qualified to handle any poured concrete job you may need. We use a practical aluminum forming system to create concrete structures of maximum strength and durability. For a highly satisfactory job at an affordable price, get in touch with us.

POURED FOR DURABILITY

Groffdale
concrete walls, inc.

BRICK CHURCH RD. LEOLA, PA. 17540

FOR SALES & LAYOUT CONTACT
GROFFDALE POURED WALLS (717) 656-2016
JAKE KING (717) 656-7566



ALL SIZES AND TYPES AVAILABLE
AT DISCOUNT PRICES



FARM TIRE SALE

- Fast On The Farm Service
- Radio Dispatched Service

Car, Truck and Implement Tires In Stock

LEOLA TIRE SERVICE, INC.

717-656-2574 258 W. Main St., Leola, PA



**DUNLOP
TIRES**

For the long run