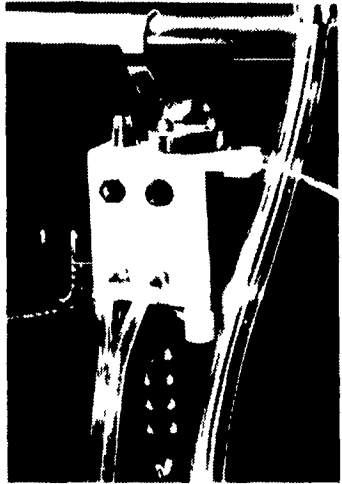


WESTFALIA HIGH TECH DAIRYING®

On Display At AG PROGRESS DAYS, August 21, 22 & 23

VISOTRON



High Tech control for stanchion barn operations to help you get all the milk from every cow.

SPECIAL DISPLAY

Westfalia's new, bold BIO-MILKER that has proven very successful in Europe for the past several years. This new milker offers a new concept in lower vacuum milking levels without a loss in milking time. This unit can be used in parlors or stanchion barns. This is one item you must see at the Ag Progress Days line up of HIGH TECH DAIRYING EQUIPMENT BY WESTFALIA.

CODATRON

Individualized Computer Feeding Systems



Model F26

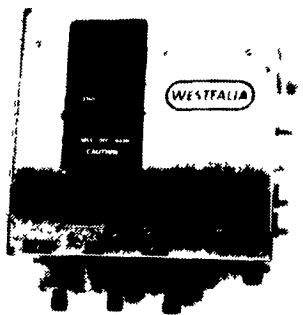


Model L

SPECIAL

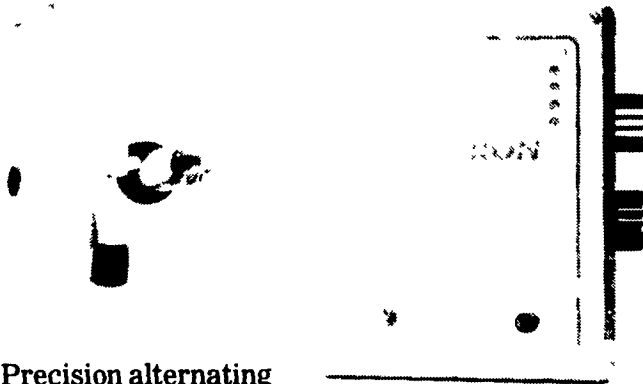
FREE VHS VIDEO DECK
For Every Dairy That Invests In A Codatron During Aug. & Sept. '84

"SOLID STATE" AUTOMATIC PIPELINE WASHER



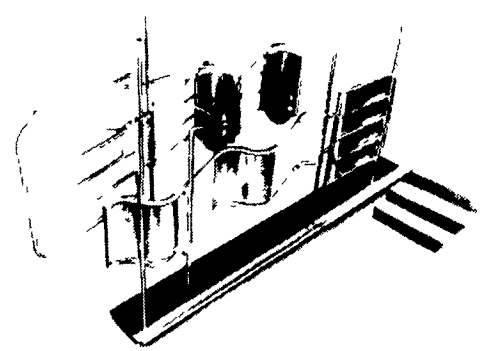
- Automatically controls wash time, wash cycle sequence, water temperature, detergents and sanitizers
- Control lights tell cycle at a glance
- 24-hour timer for round-the-clock sanitizing at preset intervals
- Fail-safe device to protect equipment

PULSTRON PULSATOR SYSTEM



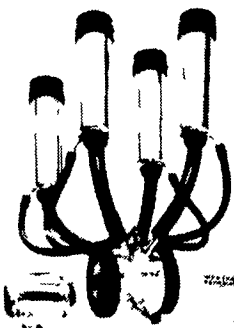
Precision alternating pulsation controls milk the rest ratios for superior milking.

HERRINGBONE PARLOR STALLS



The "Mega 45" features 2 3/8" O D galvanized structural pipe throughout. All welded design for comfort, strength and durability. Feeders, butt shields and exit gates all have stainless steel panels for years and years of corrosion-free use.

MILKERS & PULSATORS



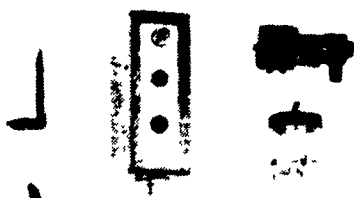
Westfalia Cluster

Autotronic Pulsator

Vacupuls Constant Pulsator

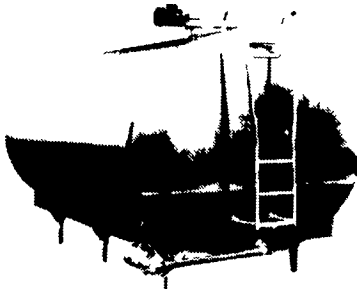
Large inflation inlets for full flow large outlets full visibility claw Wide spread inlet construction for large uddered cows

ACR



Westfalia's automatic take-off should be standard equipment in your milking facility.

Introducing A New Lineup of Stainless Steel **BULK MILK COOLERS** in capacities ranging from 600 to 6,000 gallons.



BACKFLUSH SYSTEMS

The Automatic Sanitizing Aid For Better Herd Health

- Safe
- Reliable
- Fully Automatic



Westfalia Sales Centers

CHAMBERSBURG

Cumberland Farm & Dairy Supply, Inc.
Larry Hughes
Gary Walton, Sales Mgr.
717-263-0826

COCHRANVILLE

Farm Construction & Equipment
Robert L. Janney
215-593-2365

COLUMBIA, MONTOUR & NORTHUMBERLAND CO'S.

Williams Farm Systems
Dave Williams
717-398-2692

JERSEY SHORE

Tom L. Dunlap
717-398-1391

LITITZ

Fisher & Thompson Assoc.
Amos Fisher
Rick Thompson
717-627-1530

MIFFLINBURG

Wehr's Dairy Equipment
Mark Wehr
717-966-1396

MT BETHEL

K.C. Dairy Service
Kevin Correll
717-897-5141

NEW WILMINGTON

Chuck Moose, Inc.
412-533-3077

SCHWENKSVILLE

Penn Valley Cropstore, Inc.
Dale Stutzman
215-287-9650
215-944-0126

SPARTANSBURG

Brenner Dairy Equipment
Albert Brenner
814-654-7309

TROY

Dairyland Sales & Service
Jim Kelley
717-297-4128

SYKESVILLE, MD

Dairyman Inc.
Mid-Atlantic Division
William Stauffer
301-795-2727
301-781-7020

SPECIAL WESTFALIA DEALERS FOR THE AMISH DAIRYMAN

BELLEVILLE

Byler's Diesel & Refrig. Service
Daniel Byler
717-483-6446
Answering Service

KIRKWOOD

Elam S. Stoltzfus
717-529-2623
717-529-2668
Answering Service

PARADISE

Lloyd Ranck
717-687-6361

REBERSBURG

Tim's Diesel Service
Tim Stoltzfus
814-349-5110
Answering Service

SALES ENGINEERS

NORTHWEST PA & NY

TOM MOORE
28 Petrolia St
Bradford, PA
16702
814-362-3933

MD, DE & VA

DAVE PATTERSON
P.O. 246
Upperville, VA
22176
703-592-3845

N E REG MGR

NY, PA, NJ, CT, MA, VT, RI, ME, NH
ROBERT E. TURNER
R.D. #1, Box 11
Aspers, PA 17304
717-677-9301

NATIONAL HEADQUARTERS

WESTFALIA SYSTEMAT
DIVISION of CENTRICO
1862 Brummel Dr
Elk Grove, Ill
60007
1-800-323-6723
312-437-8660