

'This cow speaks'

Rothrock retains the 'gold' for second year

BY ROBIN PHILLIPS
Staff Correspondent

Kutztown — The Eastern Holstein champ has been selected. With three more regional champions to be chosen, the stage becomes set for the Pennsylvania State Championship Show on Sept. 6 in Kutztown. If the remaining champions meet the high standards the first two have displayed the excellence at the state show will be tremendous.

Excellence just happens to be a common word in the pedigree of the new champion. Owned by Bruce L. Rothrock, of Rothrock Golden Holstein Farm, R1 Kempton, Angel PB Abbie - ET, makes this the second year in a row that Rothrock Farms has taken "the gold" at the Eastern Pennsylvania Championship Holstein Show, held at the Kutztown Fairgrounds, last Saturday.

"I really admire this udder, the milkiness, ... the attachment. This cow spells milk all over," stated Judge Lynn Miller, of Royal Haven Holsteins. When naming her first place four-year-old, Miller began pointing out the excellent udder and said she had "advantage in capacity, more quality." When placing her as Grand Champion the judge noted "the extreme dairyness of the champion," over the 180 plus entries in the show.

Shown by Jack Miller, manager at Rothrock Holsteins, Angel PB Abbie-ET is an "excellent - 90" daughter of Paclamar Bootmaker. She recently completed her three-year-old-record with over 32,000 pounds milk and 1200 pounds of fat. Fresh again, she is easily milking over 100 pounds.

Her dam, Milkyhill Crystal Jewel Angel, is an "excellent - 92" and has been flushed many times. The next dams are both "very good" and Angel PB Abbie-ET is the third generation to go

over 1000 pounds fat on a lactation. The first time out this year for the champion, she preceded this

win with a second place in the three year old class at the Maryland State Fair last year.



Grand Champion and Reserve Grand Champion

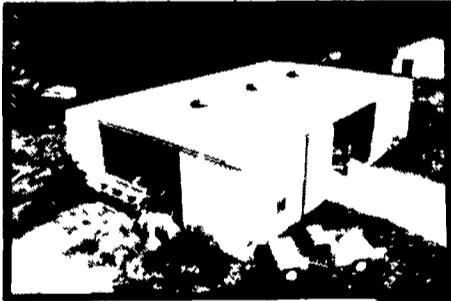
Champions of the Eastern Championship Holstein Show are pictured with dairy princesses. On left is Jack Miller of Rothrock Golden Holsteins with grand champion and on right is John Kline, of Myerstown, with reserve grand champion.

Dairy princesses, from the left, include Debbie Price, Berks County; Michelle Fulmer, Northampton County; and Kathleen Kopistecki, Montgomery County.

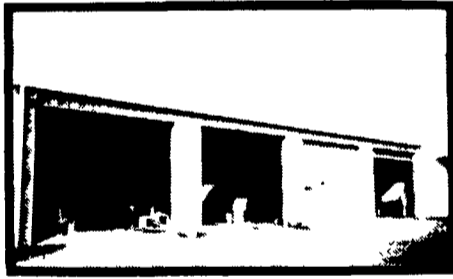
BUTLER

BUILDINGS FARM

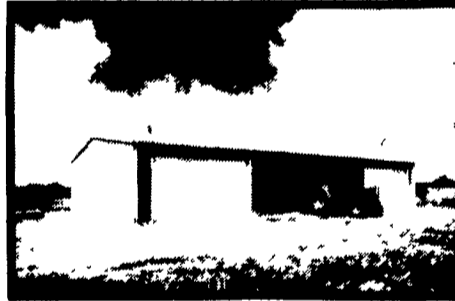
CUSTOMER AWARDS



FARMSTED® II



SHOP - STORAGE - GARAGE



AG-MASTER® 2:12

YOUR CHOICE*

CUSTOMER AWARDS PROGRAM

**Choose Your Own Gift*

BUY NOW!

* All Farmsted And Ag-Master Buildings Qualify

*** See Your Agri-Builder For Details**

PROGRAM ENDS AUGUST 31, 1984

Bethlehem 20 YEAR WARRANTY GALVALUME MATERIAL

NOBODY BUT BUTLER

*** BUY A BUTLER BUILDING**

*** CHOOSE YOUR GIFT FROM FABULOUS ITEMS. The Best Everyone In The Family. Computers, Microwave Ovens And More.**

*** LEASING PROGRAM**

*** Award credits are earned through Master buildings.**

BUTLER MFG. CO.

Attn P E Hess
P O Box 337, Oxford, PA 19363

BUTLER

Dealer Inquiries Available in Pennsylvania Counties: Lancaster, Schuylkill, Armstrong, Indiana, Erie, Crawford, Warren, Elk, Cameron, McKean, Clinton, Lycoming, Sullivan, Wyoming, Luzerne, Columbia, Bradford, Susquehanna, Adams, Cumberland, York, Potter, Tioga, New Jersey Counties: Sussex, Morris, Passaic, Atlantic, Cape May, Monmouth, Middlesex, Somerset, Maryland Counties: Talbot, Dorchester, New York Counties: Orleans, Genesee, Monroe, Livingston, Allegany, Steuben, Yates, Seneca, Cayuga, Lewis, Schuyler, Tioga, Chemung, Broome, Chenango, Madison, Lewis, Oneida, Herkimer, Fulton, Montgomery, Otsego, Delaware, Schoharie, Sullivan, Orange, Ulster, Greene, Chautauque, Cattaraugus.

No Dealers Fees

Name _____

Address _____

County _____ Zip _____

City _____ State _____

Phone _____

(Include area code)

LF

C & M SALES INC.
R D #1
Honesdale, PA 18431
PH 717-253-1612

LEROY E. MYERS, INC.
Route #1, Box 163
Clear Spring, MD 21722
PH 301-582-1552

D. E. SMITH, INC.
Mifflintown, PA 17059
PH 717-436-2151
MATTSON ENTERPRISES
1605 Mt Holly Road
Burlington NJ 08016
PH 609 386 1603

GOMPFF CONSTRUCTION CO. INC.
1841 Jerry's Road
Street, MD 21154
PH 301-692-5350

NAZARETH BUILDING SYSTEMS, INC.
P O Box 47
Nazareth, PA 18064
PH 215-759-1331

O. A. NEWTON & SON CO.
Bridgeville, DE 19933
PH 302-337-8211

PHIC BUILDERS
435 King Street
Pottstown, PA 19464
PH: 215-582-4050

TRI-COUNTY AGRI-SYSTEMS
R D #1, Box 55
Swedesboro, NJ 08085
PH 609 467 3174