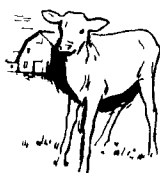


MARX BROS. MEATS, INC.



Purveyors of American
Veal & East Coast Lamb
Established 1895



We Encourage and Purchase 10 Week Old Calves At The Same Price Levels As 14 & 16 Week Old Calves. Of Course, We Also Purchase 14 & 16 Week Old Calves.

**CALL US FOR MORE INFORMATION
ON THIS PROGRAM**

(201) 747-0296

We Share Trucking Cost With Farmer

Keister's Livestock

Middleburg, Pa.
Tuesday, August 14, 1984
Report Supplied by Auction
CATTLE 357. Compared with last Tuesday's market, High Choice & Prime steers 67-68.10, Choice 64-67.35, Good 58-64.00, Standard 52-58.00, Utility 45-52.00. Heifers Choice 61-63.35, Good 55-60.85, Standard 48-55.00, Utility 42-48.00. Breaking Utility and Commercial cows 40.75-46.75, Cutter & Boning Utility 38.50-43.75, Canner & Low Cutter 32-38.50, Shells down to 28.00. BULLOCKS: Good 52-55.85. Bulls: Yield Grade No. 1 1200-2025 lbs. 50.85-57.60, Yield Grade No. 2 800-1200 lbs. 42-50.75.
FEEDER STEERS: Medium Frame #1 300-850 lbs. 48-62.00 few to 68.00. Heifers; Medium Frame #1 300-800 lbs. 35-59.00; Bulls; Medium 300-650 lbs. 38-62.00.
CALVES 212. Choice Vealers 70-80.00, Good 55-68.00, Standard & Good 90-110 lbs. 45-55.00, Utility 66-90 lbs. 35-45.00.
FARM CALVES: Holstein Bulls 90-120 lbs. 50-65.00.
HOGS 465: Barrows & Gilts, US No. 1-2 210-235 lbs. 55-56.50 few 57.05, US No. 1-3 190-250 lbs. 54.25-55.00, US No. 2-3 190-270 lbs. 42-54.25. Sows: US No. 1-3 350-600 lbs. 42-46.50, No. 2-3 300-500 lbs. 35-42.00, Boars 34.25-40.50.
FEEDER PIGS 302. US No. 1-3 10-25 lbs. 15-22.50 per head, No. 1-3 25-50 lbs. 20-34.50 per head.
SHEEP 47. Choice 80-110 lbs. spring slaughter lamb 56-63.00, Good 40-80 lbs. spring slaughter lamb 40-52.00. Slaughter ewes 12-25.00.

St. Louis Cattle

Thursday, August 16, 1984
Report Supplied by USDA
Receipts This Week: 3,700
Week Ago: 3,600
Year Ago: 4,700
Compared to last week's close, slaughter steers and heifers weak to .50 lower. Cows steady to 1.00 higher, advance on high-yielding utility. Bulls generally steady. Slaughter supply mainly choice slaughter steers and heifers, around 20% cows.
* The percentage of cows being marketed increased substantially this week due to the draught condition.
SLAUGHTER STEERS: Mixed choice and prime 2-4 1050-1275 lbs. 64.50-65.00. Choice 2-4 1000-1250 lbs. 63.50-64.50; 900-1000 lbs. 60.00-63.00; 850-900 lbs. 59.00-60.00. Mixed good and choice 2-3 900-1200 lbs. 60.00-63.00. Good 2-3 900-1175 lbs. 58.00-60.00; 850-900 lbs. 56.00-58.00. Good 2-3 1050-1250 lb. holsteins 52.00-57.00, package 57.50.
SLAUGHTER HEIFERS: Mixed choice and prime 2-4 900-1100 lbs. 63.00, part load 63.50. Choice 2-4 900-1050 lbs. 61.50-63.00; 800-900 lbs. 58.00-61.50. Mixed good and choice 2-3 800-1025 lbs. 58.00-61.50. Good 2-3 750-950 lbs. 55.00-58.00; 700-750 lbs. 51.00-55.00.
COWS: (Closing week sales) Boning utility and commercial 2-4 37.00-40.00. Cutter and boning utility 1-2 37.00-40.00. High-yielding boning utility 1-2 40.00, few 41.00 and 42.00. Canner and low cutter 1-2 33.00-37.00. Shelly canner 1-2 30.00-33.00, few 650-800 lbs. 28.00-30.00.
BULLS: YG 1-2 1100-1900 lbs. 44.00-48.00, individual YG 150.00.

Krause
Conservation Tillage
HEADQUARTERS

★
INTERCOURSE, PA

★
MIDDLETOWN, DE

CALL US TOLL FREE
For Parts & Service
1-800-233-0165
MD, NJ, DEL, NY
1-800-732-0017
PA Only

C.B. HOOBER & SON INC.

Intercourse, PA (717) 768-8231
Middletown, DE (302) 378-9555

Sells

KRAUSE

the tillage
innovators

Ask Your Neighbor About Krause...

He
Probably
Owns
One

QUALITY OLD-FASHIONED SERVICE IS HOOBER'S BUSINESS.

Model 4900
MEDIUM-DUTY
DISC HARROWS

with HEAVY-DUTY FEATURES...
1 1/2" Rugged Alloy Tie-Rods...
Massive Spring-Cushioned Hitch...
Sizes 18', 21', 22'6", 25'
Up to 170 lb. per Blade

QUALITY OLD-FASHIONED SERVICE IS HOOBER'S BUSINESS.

QUALITY OLD-FASHIONED SERVICE IS HOOBER'S BUSINESS.

MODEL 3100
LANDSMAN

Discs, Incorporates, Cultivates,
And Finishes All At Once.
Rear-Angled Disc Gangs
Level The Seedbed

QUALITY OLD-FASHIONED SERVICE IS HOOBER'S BUSINESS.

KRAUSE HAS A TILLAGE TOOL FOR YOU!

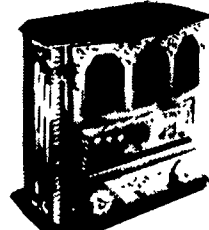
See Our Full Line Of Krause Equipment On Display
At Our Location Or At AG PROGRESS DAYS, West 2nd St.

**DUSSINGER'S
QUALITY STOVES**

COAL & WOOD

**Crane
Stoves.**

Nobody in this whole country
makes a better coal stove
than Crane

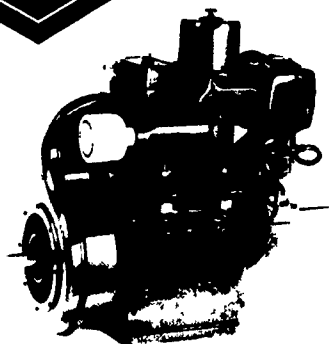


Glass Enclosures
by **Schaefer**

2533 Old Phila. Pike, Rt. 340,
Smoketown, Pa.
T, T & F 10-8 W & S 10 till 5
Mon Appt
(717) 397-7539



**PETTER
DIESELS**



AIR-COOLED PH2
Water Cooled Version Available

- Hand Cranked Standard
- 24 Air & Water Cooled Models Available - 1 1/2 - 40 H.P.

**Diesels Our Speciality
Call For Used Diesels**

Let Us Know Your Service Problems
24 Hour Service Check Our Prices
AUTHORIZED PETTER DISTRIBUTOR

**HOOVER DIESEL
SERVICE**

NEW PH. NO'S	Branch Location
Main Location	
PH: 717-656-3322	PH: 717-786-2173
717-295-1729	RD 3, Box 91A
2998 West Newport Rd.	Quarryville, PA 17566
Ronks, PA 17572	2 miles West of
2 1/2 miles East of Leola	Georgetown on Furnace
Along Rt. 772	Rd.
DEALER INQUIRIES INVITED	