

# THE OLD FARMER'S ALMANAC

AUG. 13-19, 1984

Ripening berries abound — just look around.

A good time to do some canning Moons of Mars discovered Aug. 17, 1877  
Texas philanthropist Ima Hogg died Aug. 19, 1975 Last quarter of the moon Aug.  
19 (Sun) Average length of days for the week, 13 hours, 52 minutes Five hung  
for witchcraft in Salem, Mass., Aug. 19, 1692 A burden one chooses is not felt



Ask the Old Farmer: Please explain what "long of tooth" means. No one has ever come up with a good explanation yet. But you will G.H., Reading, PA.  
The teeth of certain animals never stop growing and may in time become so long the animal can't eat and will literally starve. This indicates age.  
Home Hint: Put a strip of masking tape on plywood along where you plan to make a cut and the wood won't be splintered by the saw.

## OLD FARMER'S WEATHER FORECAST

**New England:** From beginning to end, week brings showers and cool temperatures.  
**Greater New York-New Jersey:** Beginning of week mild temperatures and rain, mid through end of week cool with possible showers.  
**Middle Atlantic Coastal:** Week begins clear and hot, midweek cool with showers, end of week more showers, some sun possible.  
**Piedmont & Southeast Coastal:** Through midweek warm with showers, end of week sunny and seasonable.

(All Rights Reserved Yankee Publishing Incorporated Dublin NH 03444)

### Lebanon Valley Livestock Auction Fredericksburg, Pa. Tuesday, August 7

Report supplied by PDA

**CATTLE** 185. One High Choice slaughter steer 1065 lbs. at 64.75, few Choice 2-3 1035-1125 lbs. 64.75-66.35, few 960-1045 lbs. 59.50-61.25, Good 56.10-59.75, few 60.00-61.75; few Good & Choice holsteins 54.35-57.50, few Standard 51.00-55.60, one Utility at 48.00. Few Choice slaughter heifers 3-4 yield grade, 55.50-61.00, few Good 53.00-55.75, few Standard 47.00-50.75, one Utility at 40.75. Breaking Utility and Commercial slaughter cows 43.50-44.75, few 45.50-48.00, Cutter & Boning Utility 39.75-43.85, Canner & Low Cutter 34.75-40.00, Shells 29.25-36.00. Few Good slaughter bullocks 53.00-55.50, few Standard 50.75-52.25. Two Yield Grade No. 1 1315 & 1460 lbs. slaughter bulls 52.00 & 54.50.

**CALVES** 268. Two Choice vealers 67.00 & 80.00, Standard & Good 90-130 lbs. 51.00-56.00, 65-90 lbs. 45.00-51.00, Utility 50-100 lbs. 30.00-45.00.

**FARM CALVES:** Holstein Bulls 85-130 lbs. 51.00-82.00, mostly 63.00-75.00.

**HOGS** 118. US No. 1-2 225-250 lbs. barrows and gilts 55.75-56.00, No. 1-3 220-270 lbs. 54.60-55.50, few No. 1-3 2-210 lbs. 52.25-54.10, lot 296 lbs. at 52.50. US No. 1-3 3-620 lbs. sows 41.00-43.75, few 48.50, No. 2-3 3-510 lbs. 38.00-40.75, one 42.50. Few Boars 30.50-32.00.

**FEEDER PIGS** 12. Two lots US No. 1-3 25 & 35 lbs. feeder pigs 76.00 & 78.00 per hundredweight.

**SHEEP** 7. Two High Choice & Prime 70 lbs. spring slaughter lambs 50.00 & 51.00. Few Slaughter sheep 11.00-14.00.

### Carlisle Livestock Auction Carlisle, Pa. Tuesday, July 31

Report supplied by auction

**CATTLE:** Steers: Choice No Choice steers; Good 58.00-62.00; Medium 57.00 down. Heifers: Choice none offered; Medium 44.25-48.75. Cows: 2.00 higher on large run. Individual 48.25. High Yield 43.00-46.10; Average 39.00-43.00; Big Middle 38.00-42.00; Fatty Herf to 41.85; Shelly 37.50 down. Fat Bulls: Good 50.25-53.00; Medium 45.10-49.75.

**FEEDER CATTLE:** Active bidding on large run, strong demand for Choice cattle. Steers: (300-550 lbs.) Steady to 1.00 higher; Choice 65.00-57.00; Good 55.00-59.00; Medium 49.00-55.00; Culls 48.00 down. Steers: (600-850 lbs.) Medium to Good 48.00-55.00. Heifers (all weights): 2.00 to 3.00 higher on Good & Choice heifers. Choice 53.50-59.00; Good 48.00-52.50; Medium 42.00-47.00; Utility 36.50-41.00. Bulls (all weights) Medium 40.00-50.50.

**VEAL CALVES:** Choice 65.00-75.00; Good 56.00-65.00; Medium 45.00-55.00; Light/weak 44.00 down. Farm Bulls- 70.00-79.00. Farm Heifers- 75.00-88.50.

**HOGS:** Barrows & Gilts 2.00 lower. 210-250 lbs. 52.75-55.60; over 260 lb. 51.00-53.10; Under 210 40.00-45.00; 2&3's 44.00-50.00.

**SOWS:** 2.00 higher for heavy sows. Over 450 lb. 38.50-45.10; under 450 35.00-42.50. Boars: Heavy 34.25-36.50 (1.00 higher) Light 38.50-44.00.

**FEEDER PIGS** (by the hd) 3.00 lower. (20-25 lbs.) 12.00-19.00 hd. (30-45 lbs. 22.00-27.00 hd.) (45-55 lbs. 30.00-34.00 hd.)

**SHEEP:** Lambs- Good 53.00-

# Livestock market and auction news

57.00; Med 40.00-48.00. Ewes: 14.00-27.00. Goats: (Lg) 40.00-49.00 (hd); Sm./Med 16.00-30.00 (hd).  
State Graded Feeder Pig Sale; Friday, August 10th 1:30 P.M.

Light/weak 49.00. Farm Bulls- 70.00-83.00.

**HOGS:** Barrows & Gilts 210-250 lbs. 52.10-54.85; over 260 lb. 48.25-52.85; 2&3's 45.00-48.00.

**SOWS:** Good run. Over 450 lb. 39.25-44.25; under 450 38.00-45.50; 2&3's 34.50-39.00. Boars: Heavy 33.75-35.25; Light 42.00-43.50.

**FEEDER PIGS** (by the hd) (20-30 lbs. 19.00-23.50) (35-45 lbs. 22.00-25.00). Shoats (by the lb.) (125-140 lbs.) 45.00-46.00.

**SHEEP:** Lambs- Good 54.00-55.00; Med 43.00-49.00. Ewes: 12.00-23.00. Goats: (Lg) 39.00-47.00 (hd); Sm./Med 9.00-33.00 (hd).

## Oklahoma Cattle

Wednesday, August 8

Report supplied by USDA

Estimated Receipts 9,000  
Same Day Last Week 6,596  
Actual auction sales expected to run near 7000 head.

Trends unchanged in afternoon trading. Feeder Steers and Heifers steady to firm. Demand Good and trade active on No. 1 and Mixed 1-2 muscled cattle. Demand fair for No. 2's. Bulk supply Medium and Large Frame 1 and 2 500-900 lbs. Feeder Steers and 450-750 lb.

heifers. Calf numbers limited.

**FEEDER STEERS:** Medium and Large Frame 1 375-410 lbs. 74.50-75.50; 400-500 lb. 66.40-69.25; 433# lot 73.10; 500-600# 64.00-66.40; 600-700# 63.20-65.50; 700-800# 63.00-64.50; 800-900 lb. 61.50-63.30; 900-955 lb. 60.00-61.75. Medium and Large Frame Mixed 1-2 290 lb. 63.75; 500-600 lb. 62.50-65.50; 600-700 lb. 61.75-64.30; 700-800 lb. 61.75-64.00. Medium and Large Frame 2 300-600 lb. 55.25-62.50; 600-725 lb. 57.00-61.50. Large Frame 2 Holsteins 500-605 lb. 40.75-44.80; 615-750 lb. 43.00-47.75; lot 890# 45.10.

**FEEDER HEIFERS:** Medium few Large Frame 1 400-500 lb. 54.50-57.80; few lots 370-400 lbs. 57.00-58.70; 575-750 lb. 57.50-60.10, several 59.00-60.10; some lots fleshy 525-550 lb. 52.50-56.50. Medium and Large Frame Mixed 1-2 285 lb. 53.75; 500-800 lb. 55.00-59.00, few 53.50-55.00. Medium and Large Frame 2 375-500 lb. 46.25-50.50; 500-775 lb. 46.00-55.00 several 51.30-55.00.

**FOR THE WEEK:** Feeder Steers and Heifers steady to 50 cents higher. Slaughter Cows and Bulls steady (thru Wed.).

## Carlisle Livestock Auction Carlisle, Pa.

Tuesday, August 7

Report supplied by auction

**CATTLE:** Steers: Steady to 1.00 higher on good run with strong demand. Choice 62.50-64.75; Good 55.25-62.00; Holsteins 50.25-55.50. Heifers: Mostly steady. Good 50.00-57.50. Medium 43.00-49.00. Cows: 1.00 to 1.25 lower but active. High Yield 41.75-44.75; Average 38.00-41.50; Big Middle 37.25-42.00; Shelly 37.00 down. Fat Bulls: Medium 46.75-50.75.

**FEEDER CATTLE:** Steers: (300-550 lbs.) Steady. Good 55.50-60.50; Medium 49.00-55.00; Culls 48.00 down. Steers: (600-850 lbs.) 1.00 higher. Good 54.00-59.00; Medium 45.00-51.00. Heifers (all weights): Choice none offered; Medium 42.00-45.00; Utility 32.00-41.00. Bulls (all weights)- Steady. Good 52.00-55.00; Medium 40.50-50.00.

**VEAL CALVES:** 5.00 higher. Choice 71.00-80.00; Good 60.00-70.00; Medium 50.00-60.00;



GWALTNEY of SMITHSFIELD, LTD.

We will receive your market hogs

Mondays, Wednesdays, Thursdays & Fridays

Note Our New summer Hours 6:00 A.M. to 12 Noon

Looking For Hogs 210 to 250

Located at the Vintage Sales Stables, Paradise, PA

You will be paid immediately.

No commission or yard fees deducted.

Reduced waiting time. Premium prices are paid for extra fancy hogs.

For Information Call

Ed Herrman or Charlie Kauffman 717-442-4742 or 717-442-4181



## ATTENTION FARMERS

EVERY MONDAY HATFIELD PACKING CO. and MOYER PACKING CO.

Will Receive Your Hogs and Cattle at the DANVILLE LIVESTOCK MARKET RD 4, Danville, PA

- We will receive your hogs from 8 AM to 12 Noon every Monday Your hogs will be weighed and paid for immediately
- We will also accept your sows & boars
- Your cattle will be received from 12 30 to 5 P M We will either pay you for your cattle immediately or you may sell them dressed weight
- There will not be a commission or yardage fee deducted from your check
- You may call our office Monday morning and we will be able to tell you the base price for hogs for the day.

MELVIN M. LEHMAN - Owner Danville Buying Station Phone: 717-275-2880

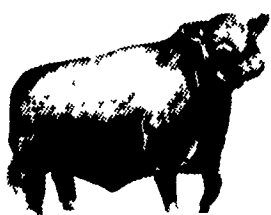
## LEESPORT MARKET & AUCTION, INC.

North end of Leesport, PA

Turn East off Route 61

"WHERE FRIENDS MEET"

BERKS COUNTY'S ONLY WEEKLY CATTLE & SWINE AUCTION — WEDNESDAY AT 1 P.M.



FARMER'S MARKET Every Wednesday, 10 A.M. TO 9 P.M.



Garden Fresh Fruits & Vegetables - Bakery Fresh Cakes, Pies and Buns - Butcher Fresh Meats & Cheese - Sporting Goods - Clothing - Furniture - Jewelry - Used Items & Collectibles.

PHONE: 215-926-1307

LEROY WEIST & JOHN WEIST, MGRS.



### EMERY'S BUYING STATION

**OPEN TO RECEIVE YOUR MARKET HOGS**

**AT THE GREEN DRAGON MARKET RD 4, EPHRATA, PA 17522 1 MILE NORTH OF EPHRATA ON NORTH STATE STREET.**

**HOURS: MONDAY, TUESDAY, and WEDNESDAY 6:00 A.M. to 11:30 A.M. 215-458-5677 Residence 717-733-9648 Office**

**YOU ARE PAID FOR YOUR HOGS IMMEDIATELY**

Ken & Lois Emery, Proprietors

**FRIDAY, AUGUST 31 ON THE FARM MONTHLY BRED GILT SALE**

Sale to Start Promptly at 7:30 Every 4 Weeks

**NOTICE 2 Evening Sales, August 3, and August 31**

Located 18 miles south of Lancaster, Pa., 6 miles south of Quarryville, take Rt. 272 to Little Britain, turn north, follow Little Britain Road to Jackson Road, 2nd farm, OR take Rt. 222, out of Quarryville to Cedar Hill Road to Little Britain Road to Jackson Road. Watch for sale arrows. 50 to 60 Head

Now selling our new hybrid gilts representing mostly York & Hampshire & Landrace cross. Bred for easier & less trouble over farrowing and better weight gains.

Validated Brucellosis Free Herd #169  
Qualified Pseudorabies Free Herd #55

Hand mated with Breeding Dates

Local Trucker Available  
No Hogs Sold On Commission

**CHRIST A. BEILER**  
R.D. 2, Quarryville, Pa  
**JOHN B. STOLTZFU**  
R.D. 1, Kirkwood, Pa  
Abe Diffenbach, Auctioneer AU225L  
NEXT SALE DATE SEPTEMBER 28