

Lamb champion crowned

LEBANON — Melanie Bow of Annville claimed Champion Market Lamb honors at the Lebanon Area Fair with a homebred Suffolk. Melanie has shown sheep for eight years but took home her first Market Lamb Championship during the 1984 Junior Sheep Show.

Judge Gene Sweigard, of Halifax, commented on the extreme length of loin and heavily-muscled leg on this heavyweight lamb. Prior to the Market Lamb show, the mother of this lamb was named Reserve Champion Suffolk Ewe and its sister was named Supreme Champion Ewe of the breeding show. Melanie credits her daily walking of this lamb with strengthening the leg that impressed the judge.

Melanie finished her evening with Champion Fitter and Showman awards. Her summary of the evening was "it finally all came together."

The Reserve Champion Market Lamb was also a Suffolk shown by Darren Grumbine. This is the second year that Darren has claimed these honors. Darren is the son of Mr. and Mrs. Dennis Grumbine of Myerstown.

The Reserve Champion Fitter



Melanie Bow with her Lebanon Fair Grand Champion market lamb -- a homebred Suffolk. Judge is Gene Sweigard.

was Heather Ernrich of Annville and The Reserve Champion Showman of the 4-H show was John Moyer, also of Annville.

In FFA Sheep Fitting and

Showman competition, Matthew Hetrick of Palmyra claimed Champion Fitter and Showman honors while his sister took Reserve Champion honors — D.M.

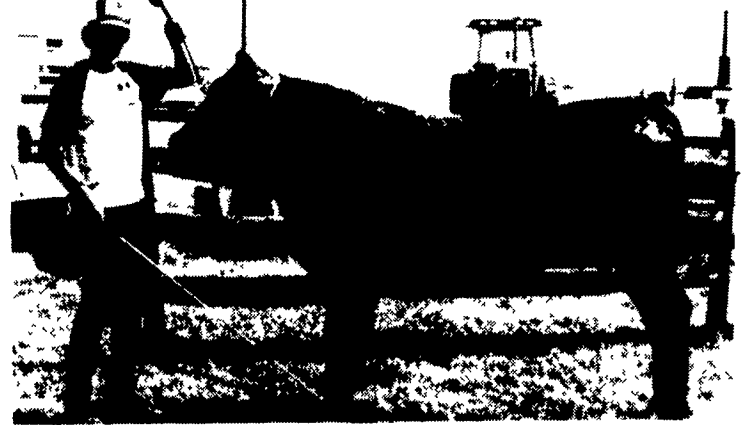
Harnish steer named best

LEBANON — Grand Champion Steer honors at the Lebanon Area Fair were claimed by Eric Harnish of Campbelltown. His flashy black steer was purchased from Messick Farms of Middletown.

The Reserve Champion Steer was shown by Kelly Heisey of Lebanon. Kelly is one-half of the "Heisey sisters" who have claimed many championships in steer competition during their 4-H careers. Kelly's chocolate steer was a Chianina-Simmental-Hereford cross which was purchased from her uncle in Missouri.

In Fitting and Showmanship competition the female exhibitors "cleaned house." Leigh Hitz of

Annville, a second year 4-H member claimed the Championship in Fitting. Kelly Heisey took Reserve Champion Fitter honors and was named Champion Showman. Judge Gene Sweigard of Halifax commented on Kelly's "professional performance" in the showing. Kelly's big steer did anything but what it was supposed to, yet Kelly remained in control at all times and stayed alert to the judge. Through all of this, Kelly continued to "look like she could handle anything that happened." Dorene Eberly of Newmanstown was named the Reserve Champion Showman — D.M.



Eric Harnish sets up his Grand Champion steer of the Lebanon Fair.

WESTFALIA HIGH TECH DAIRYING® VISOTRON

High Tech control for stanchion barn operations

High tech control is now available for stanchion barn operations with the Westfalia Visotron. Every cow has different milking tendencies and Westfalia's Visotron will help you get all the milk from every cow.

With the Visotron, you can monitor milk flow control pulsation and even regulate vacuum on an individualized basis for each cow. Visotron saves time and money. Each cow gets the individual attention she needs to give all her milk comfortably without the need for manual supervision. The result: increased production and profit.

The Visotron is portable and easy to install. It's the kind of addition to your dairy that will pay for itself in a very short time.

Contact your Westfalia Sales Center today. Find out why Westfalia is truly the leader in high tech dairy equipment.

AUGUST SPECIAL
\$50⁰⁰ OFF
Buy A Visotron Unit And
Receive \$50⁰⁰ Off Regular Price
Offer Ends August 31st

Learn What The Visotron Will Do For You, From Current Users And On The Farm Demonstrations.

FISHER & THOMPSON ASSOCIATES

Milk Equipment Sales & Service
21 E. Woods Dr. Lititz, PA
CALL 717-627-1530

Amos Fisher 717-687-8871 Rick Thompson 717-627-1530
24 HR. SERVICE

ATTENTION FARMERS

in Northampton Co., PA and Warren Co., N.J.

GEORGE C. SCOTT
Sales Representative

George
And Leroy
Invite
You To
Join Us
For A

C. LEROY EHST
Sales Representative

PANCAKE AND SAUSAGE BREAKFAST

FRIDAY, AUGUST 17, 1984
Cloverdale Farms The Paul Smith Family
Mount Bethel, PA
Serving Breakfast From 8:30 AM To 11:00 AM

Computer
"Computrac" Feeder

**ON
DISPLAY**

Farmmaster
Tumble Mixers

PROGRAM WILL FEATURE

DR. LARRY PRICE **DR. MIKE HUTJENS**
ON ON
FEEDING DRY COWS **TOTAL MIX RATION FEEDING**

DIRECTIONS TO FARM: US Rt. 611 North of Richmond; Turn right onto Stone Church Drive; Go approximately .8 mile; Barn on left, house on right.

Penn Jersey Products Inc. P.O. Box 7 New Holland, PA 17357 717-354-4051