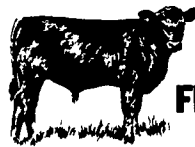


FEEDER PIG AND CATTLE SALE

FRIDAY NIGHT, AUGUST 17
6:30 P.M.



Keister's Middleburg Auction Sale, Inc. Rt. 522 3 miles east of Middleburg, Pa. 5 miles west of Selinsgrove, Pa.

For information call: 717-922-1490 or 717-837-2222 or 717-523-0360

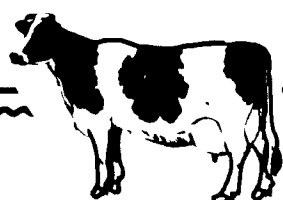
Keister's Middleburg Auction Sales, Inc.
Rt. 522 RD 3 Middleburg, PA

Owners,
DON & WALT KEISTER

Ray Long and Dave Imes,
Auctioneers

Trucking Available

Restaurant Open



NEW HOLLAND SALES STABLES, INC.

New Holland, Pa.

DAIRY SALE CONSIGNMENTS

For

WEDNESDAY, AUGUST 15, 1984

- * 25 Purebred and Grade Canadian Cows, Fresh and Springers, consigned by Roy Johncox.
- * 25 Canadian Cows Purebred and Grades, fresh and springer cows, consigned by H.D. Matz.
- * 1 load fresh and springer cows consigned by Merle Breneman.
- * 1 Load Purebred & Grade Canadian Cows, Fresh and Springers, consigned by Kelly Bowser.
- * 1 load fresh and springer cows consigned by Norman and David Kolb.
- * 1 load Fresh and springer cows consigned by Marvin Eshleman.
- * 1 load fresh cows consigned by Alfred Albright.
- * 1 load fresh and springer cows consigned by Raymond Smucker.

PUBLIC SALE

**40 ACRE DAIRY & POULTRY FARM
HOLSTEIN HERD — FARM MACHINERY
MILKING EQUIPMENT — MULES — HAY**
SATURDAY, SEPTEMBER 1, 1984

10:00 A.M.

Located in Lancaster Co., PA, 2 miles south of Strasburg. Route 896 South, 2nd crossroad right at Paradise Lane and Ivy Road.

REAL ESTATE 12:00 NOON

40 Acres - Improvements thereon consist of a bank barn, 29 comfort stalls, box stalls, 12x60 silo, tobacco shed, 10,000 bird capacity cage layer house, 2 manure pits, and a 2½ story 5 bedroom house. Move in and roll operation.

TERMS: 10% down sale day - Final Settlement 60 days

For an appointment to see farm call 717-786-4624

Owners:

JOHN D. & REBECCA GLICK

34 Head Holstein Herd 1:00 P.M. 34 Head

23 milk cows, fresh and in all stages of lactation. 7 milking 1st calf and 7 with 2nd calf. 3 heifers bred for fall. 8 heifers 10 mo. old to breeding age. Herd on owners samplers, vaccinated heifers, 30 day charts, pregnancy checked. Well uddered animals.

Milking Equipment

500 gallon Mueller milk tank, direct expansion; Murphy 23 hp diesel, 3 hp compressor; vacuum pump; 3 Surge 50 lb. milker units; stainless steel twin tubs; drain rack; and other miscellaneous milking equipment.

4 Head Sorrell Mules - Harness Hitches

Pair 8 year olds; pair 6 year olds; all well broke in nice condition, snappy and ready to go; 4 sets harness; collars; bridles; lines; double & triple trees; 4 & 5 horse hitches.

Farm Machinery

2 way Oliver plow; 3 section spring tooth harrow; McDeering No. 9 mower ground drive; New Idea crimper, high wheel w/4 cylinder Wisconsin engine; New Holland 256 rake; Farm Bilt flat bed wagon with brakes; New Idea 16A manure spreader; Zook liquid manure spreader; John Deere 999 corn planter; McDeering corn binder w/8 hp Briggs engine and loader; McDeering No. W9 gas tractor w/pulley, good running condition; 300 gallon fuel tank w/pump; feed carts; 4 new rolls barbed wire; not many small items - come early to purchase farm machinery.

2 round hay racks - McDeering 2 horse cultivator.

14 acres of standing Pioneer corn will be sold per acre.

Auctioneer:
Steve Petersheim:
717-786-4624
Lic. #AU-001349-L

Owners:
DAVID D. & KATIE GLICK

Dairy and Livestock Sales

Public Auction Register

Closing Date Monday 5 00 P M
of each week's publication

THURS AUGUST 30
10 AM Public Auction of 45 Acres of Standing Corn and an Outstanding Line of Farm Machinery Located in Pequea Twp, 6 miles south of Lancaster, PA Take New Danville Pike, turn east on Penn Grant Road to Church Rd (next to Pequea Brethren in Christ Church) Mr & Mrs Paul R Bowman, Owners The J Omar Landis Auction Service w/Jay M Witman, Auctioneers

THURS AUGUST 30
Public Sale of Dairy Cattle, Farm Equipment, Horses & Horse Drawn Machinery at 10 AM Located - Cumberland Co., PA, farm located along Rt 641, 3 miles west of Newville and 6 miles east of Newburg Sale By John & Sadie Esh

Lamar & Melvin Sensenig, Auctioneers

FRI AUGUST 31 - 9 30 AM Public Auction of Farm Machinery Located in Lumberton, NC, 4 miles south of I-95 on NC211 New Holland Credit Corp, Owner Meekins Auction Co, Auctioneers.

SEPTEMBER

SAT SEPTEMBER 1 - 12 30 PM Public Auction of PA's 6th Performance Tested Ram Lamb and Invitational Ewe Sale Located at the Pennsylvania Dept of Agriculture's Meat Animal Evaluation Center, 651 Fox Hollow Rd, State College, PA 16801. Sponsored by the PA Dept of Ag in Cooperation with the PA State University and the PA Sheep and Wool Growers Assn

SAT SEPTEMBER 1 - 10 AM Public Auction of Farm Real Estate, Farm Equipment, Household

Articles, Antiques, Misc Items, Etc Located approx 1½ miles southeast of Shippensburg, PA, if leaving Shippensburg on South Queen St Extended, hard road to right just before Rt I-81 (Koser Rd) to sale site Roy E Koser Estate Barbara Jean Rhine and Leroy Koser, Co-Executors D Hershey, A McLaughlin, & C Martin, Auctioneers

MON SEPTEMBER 3 - Public Auction of 149 acre dairy farm and farm equipment Located along Rt 419, 5 miles North of Schaefferstown, Millcreek Twp, Lebanon County, PA Sale by John J and Eva Oberholtzer Paul E Martin and John D Stauffer, Auctioneers

MON SEPTEMBER 3 - 9 30 AM Public Auction of 4 Tractors, Farm Machinery, Hay & Farm Items Located from Gettysburg, PA, take Legislative Rt 889 (toward Arendtsville) 4.5 miles northwest to Mummansburg, PA Turn left on to Hilltown Rd, go to first farm Lawrence C Redding Estate Thomas Redding, Gary Redding & Larry Redding, Co-

Executors C David Redding, Auctioneer

WED SEPTEMBER 5 - 3 PM Public Auction of Trucks, Building Supplies & Contractor Tools Located 1 mile south of Jacobus, PA York County Turn right on Beck Rd Follow to end of blacktop Glenn Breneman, Owner Blaine N Rentzel, Auctioneer

THURS SEPTEMBER 6 - Monthly Cow Sale at Mel Kolb, Inc Lancaster Farm, 2220 Dairy Road, Lancaster, PA

FRI SEPTEMBER 7 - 7 00 P M Holstein Promotional Sale at New Holland Sales Stables, Inc 12 miles East of Lancaster off Rt 23 in New Holland, PA. Abe Driftenbach, Manager

FRI SEPTEMBER 7 - 9 AM Public Auction of Machinery, Seeds, Hardware & Tools Located between Schaefferstown and Lebanon, 1 block off Rt 897 near Iona, 306 Iona Rd, Lebanon County, PA Hamilton Bank, Owner Pursuant to Security Agreement with Boyd Seed Center, Inc Paul E Martin & John D Stauffer, Auctioneers



ABSOLUTE PUBLIC AUCTION

"Selling To the Highest Bidder"

**45 Acres of Standing Corn
Outstanding Line of
Farm Machinery**
THURSDAY, AUGUST 30, 1984

**10:00 AM SHARP
PEQUEA TOWNSHIP**

Located 6 miles south of Lancaster, PA

Take New Danville Pike,
turn east on Penn Grant Road to Church Road
(Next to Pequea Brethren in Christ Church)
**45 acres of Beautiful Standing Migrow,
PAG, Todd, Decalb Corn**

FARM MACHINERY

300 Massey Ferguson Combine w/Corn Head
International 656 Tractor, Ceraham 3 Point Plow
Farmall Super C w/Cultivators & wide front end
Case 400 w/eagle hitch
12 H P wheel horse automatic w/Rototiller, Mower
International Disk Harrow
New Holland Baler No 67
Hamilton Cultipacker
710 3-Bottom auto-matic Semi-mounted Plow
3 Bottom Eagle Hitch Plow for Case 400
70 Bu. Grain Cart, 2 wheeled
Int. Model 449A, 4-row Drill Corn Planter
Ruth Bale Elevator
International Grain Drill
Flatbed Wagon
2 Gravity Bin Wagons w/6 Ton Running Gears
Papec Hammer Mill #13
500 lb. Fairbanks Scale
2 Gas Heaters
Pipe Thread Cutter
Tap n' Die Sets
Tractor Grass Seeder
Hydraulic Jack-5 Ton
Electric International Weed Chopper Fencer
2 Fuel Tanks w/Pumps
Electric Motors

Half-Ton Chain Hoist
Log Chains
¾-Ton Winch Hoist
Big Dutchman Egg Cooler
B.D. Drill w/Press
Farmhand Fan for Combine
Wheelbarrow
Bag Wagons, Fans
Pipe Vise
Table Saw-Craftsman
Work Table w/Vise
Martin Shredder
Charmaster 1 wheel Tractor
1 Little Genius Trailer Plow-14 in.
Manure Pump
2 Feed Carts
Portable Pig Poke Shed (for 30 head)
Pit Scraper for Chicken House
Rally Hot Shot Space Heater
Marlow Water Pump
Fire Extinguisher
Minnich Tobacco Press
Water Tank
Walnut Wood
Anvil
3 McCormick Deering Cream Separator

(Also selling for Kenneth T. Bowman)

No. 218 New Idea Manure Spreader
5 Ft. Pull Grass Mower

Wooden Work-type Table w/Drawers
Manual Meat Slicer

HOUSEHOLD ITEMS

4 piece Bedroom Suite Organ in Piano Case Old Chest Coal Stove

Not responsible for omissions & errors on printed material

Auction for
MR. & MRS. PAUL R. BOWMAN
RD #2
Willow Street, Pa. 17584

Auction Conducted by
The J. Omar Landis Auction Service
Jay M. Witman AU001127-L
Box 501, Ephrata, PA 17522
717-627-0789 or 665-5735

Homemade Food by New Danville Menn. Church
"Our Services are Often Copied, But Never Duplicated"

