

Flemington Fair features tractor pull

FLEMINGTON, N.J. — The highlight for most area farmers at Flemington Fair has to be the Championship Farm Tractor Pull. The event takes place on the track in front of the grandstand, and on Farmers' Day. That will be Wednesday of fair week, Wednesday, Aug. 29. It begins at 9 a.m.

There's a new class this year, for the "big ones." Class 8 has been added and it's for 4-wheel drive tractors, 21,001 to 24,000 lbs. Class 7 has been changed, and will include 4-wheel drive tractors, 18,001 to 21,000 lbs.

A new rule adopted by the committee prohibits top bracing of the drawbar of point of hitch.

Otherwise, rules and contest procedures are the same as last year. Weighing in of tractors begins at 8 a.m. on the portable scales on the fairgrounds. Tractors are weighed by the committee and assigned to classes.

The committee officiating at the tractor pull is the large Farmers' Day Committee headed by Bob Manners, East Amwell Township farmer. The committee is made up of 30 or more members. In addition to weighing tractors and assigning them to classes, they mark out the track, operate the start and stop flags, measure distances, and more.

There's a lot of work to be done to make the contest run smoothly. Prizes are provided: \$50 for 1st place; \$35 for second; \$25 third; down to \$5 for 6th. A big trophy goes to each class winner. Donors of trophies and prize money are: J.S. Covert & Sons, Neshanic, Frank Rymon & Sons, Washington; Poniatowski's, Flemington; Hobensack & Sons, Ivyland, Pa.; John M. Saums &

Sons, Inc., Flemington; D & R Equipment, Ringoes; and the Hunterdon County Board of Agriculture.

Tractors made in 1938 and earlier are eligible to compete in their respective weight classes. They receive a \$25 special premium as an antique tractor. We generally get 8 to 10 antique tractors, and yes, there's most often an antique among the top two or three places.

The farm tractor pull is limited to tractors owned and operated by New Jersey farmers. It is after all the State Championship Pull. Tractors must be stock models no

modifications. If it is a "modified" tractor, it will go into the competition for modified tractors set for Wednesday evening of fair week. That's when the big ones roar down the track with throttle wide open. That's a spectacle!

And, if you can't compete in either of these two events, consider the Garden Tractor Pull on Thursday of fair week. It begins at 1 p.m. on the track. You can bring your garden tractor, weigh in, and participate. It's a lot of fun! Bernie Beatty, Bethlehem Township dairy farmer, heads up this activity for the Farmers' Day Committee.



Computerized feed cart debuts

STOUGHTON, Wisc. — A new computerized, programmable feeding system cart called "Digifeed" is now available from CSF Ag Division, Stoughton, Wisc.

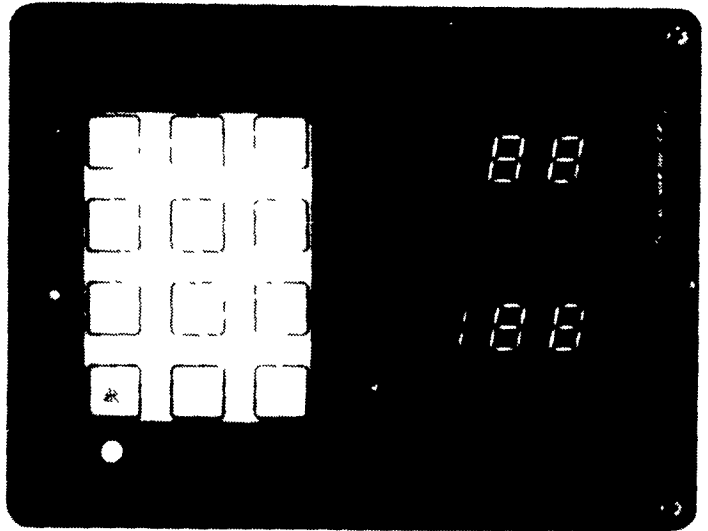
Digifeed's exclusive, programmable feeding system is designed for confinement barns, and allows dairymen the opportunity to program the exact feed amount needed per cow for up to 200 cows.

"There's no more guesswork to feeding grain or concentrates," says Dennis Hilgendorf, CSF president. "Just program each cow's individual feed requirements once each month and turn the feeding chores over to someone else."

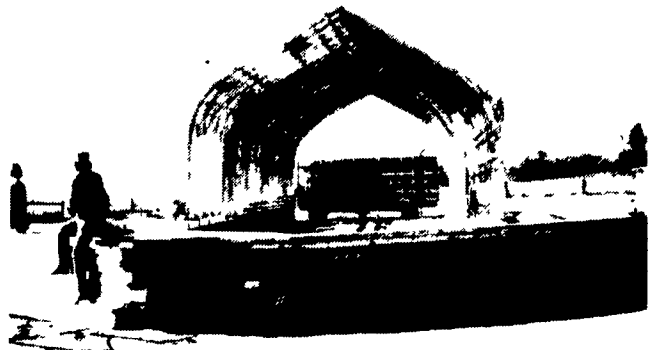
Digifeed is calibrated to one-tenth of a pound, so you don't have to worry about under or over-feeding. The cart is battery-driven, with independently-powered direct drive to the front wheel and conveyor system, eliminating all belts. The front wheel drive allows the cart to turn within its own radius. Digifeed comes in 17 and 14 bushel capacities.

The digital display board carries a life expectancy of 2½ million cycles. The hopper carries a 10-year warranty, and the drive systems a 5-year warranty.

For further information, contact: CSF Ag Division, Inc., P.O. Box 182, Stoughton, WI 53589, or call 608/873-7130.



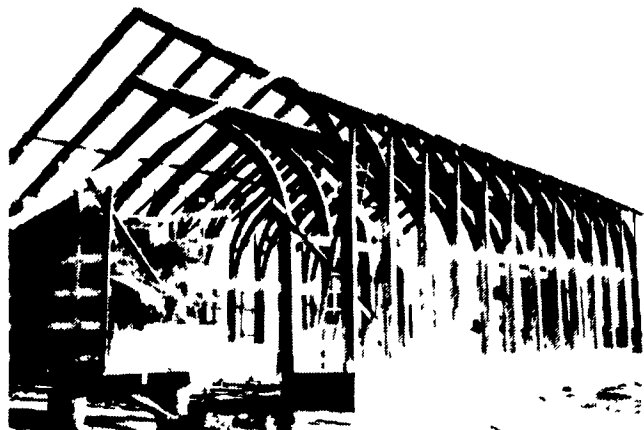
Manufactured by CSF Ag Division, Stoughton, Wisc., Digifeed allows dairymen the opportunity to program the exact feed amount needed per cow for up to 200 cows.



36'x100' DOUBLE ARCH CORN CRIB

Don't Blow Your Money on Heat.

Save Your Hot Air - Invest in a Type Bldg. You can use year-a-round



AN EFFICIENT CLEAR SPAN STRUCTURE No Posts To Split & Rot Off.



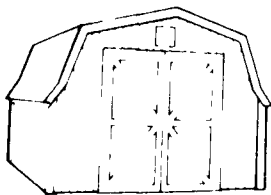
BUILD A VERSATILE BUILDING THAT EARNS YOU MONEY - NATURAL AIR DRYING SAVE THE FEEDING VALUE

FABRAL CORPORATION

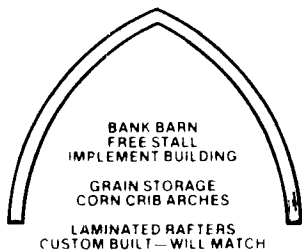
ROOFING SIDING & ACCES.



Cannon Ball will make your door roll with ease & last longer.



MINI BARN IN STOCK



BANK BARN FREE STALL IMPLEMENT BUILDING GRAIN STORAGE CORN CRIB ARCHES LAMINATED RAFTERS CUSTOM BUILT—WILL MATCH

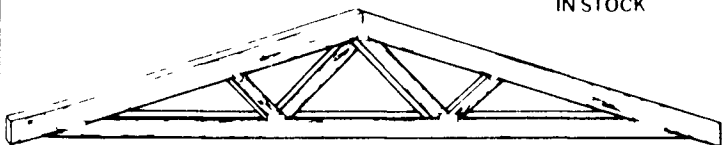
CRANE SERVICE

CALL US FOR INFORMATION 717-866-6581

Rigidply Rafters

PRODUCTS WE MANUFACTURE AND STOCK

- * Laminated Archs & Beams
- * Lumber
- * Treated Timbers
- * Flooring & Decking
- * Corn Crib Siding
- * Fabral Roofing, Siding & Acces.
- * Cannon Ball Door Track
- * Agri Type Doors, Windows & Vents



TRUSSES FOR SMALL AND LARGE BLDG.