

Ag research center under construction

RESEARCH TRIANGLE PARK, N.C. — A tree-planting ceremony here has heralded the beginning of construction of a \$15-million agricultural chemicals research center for BASF Wyandotte Corporation, headquartered in Parsippany, N.J.

The research center, scheduled for completion in 1986, will be a multi-building complex of laboratories, greenhouses and offices supporting biological and chemical research for the development of advanced agricultural products. The center will be the first agricultural research facility to be located in the United States by BASF Wyandotte's parent company, BASF A.G. of West Germany, the world's second largest chemical company.

Governor James B. Hunt of North Carolina joined company officials at the 46-acre site for the groundbreaking and tree-planting ceremonies. Two trees, planted side by side, were a dogwood, whose flower is the state flower of North Carolina, and a linden, representing the company's heritage.

"These trees symbolize our plans to develop and strengthen our agricultural chemicals research efforts, and together they are the promise for tomorrow's growth," said Edwin L. Stenzel, president of BASF Wyandotte.

The new center will provide for the more rapid selection, development and registration of

new agricultural chemicals, as well as help optimize the performance of the company's existing agricultural products, Mr. Stenzel told the 200 persons attending the groundbreaking ceremonies.

BASF, which had worldwide pesticide sales of \$640 million in 1983, is a major producer of agricultural chemicals. In the United States, BASF Wyandotte is the largest supplier of herbicides for soybeans with its two postemergence products, Basagran for control of broadleaf weeds and Poast for grasses.

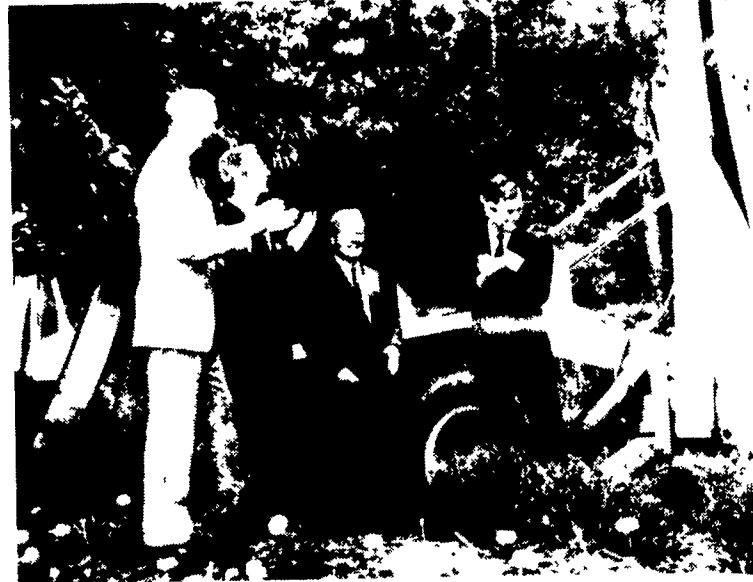
BASF screens more than 10,000 agricultural compounds each year, mainly at its research center at Limburgerhof in West Germany, before testing the most promising candidates at a network of eight experimental farms, including two in the United States at Greenville, Miss., and Dinuba, Calif.

The new research center at Research Triangle Park, which will employ initially about 70 scientists and technicians will work closely with the research center at Limburgerhof. The

100,000 square foot complex is designed in a series of three interconnected two-story structures alongside a four-acre lake.

The buildings will contain separate sections for chemistry and biology, data and computer facilities and a multi-purpose area for conferences and meetings. An additional 12,000 square feet will be devoted to greenhouses.

Other dignitaries participating in today's ceremony included George Watts Carr, Jr. of the Research Triangle Foundation; Dr. Hans Detzer, deputy chairman of the Board of Executive Directors of BASF; Dr. Detlef Dibbern, member of the Board of Executive Directors of BASF, president of BASF America Corporation and chairman of BASF Wyandotte; Dr. Horst Metzger, director of BASF's worldwide agricultural chemicals business; and Ingo Kroeger, group vice president of agricultural chemicals for BASF Wyandotte.



PUTTING DOWN ROOTS — BASF Wyandotte Corporation recently marked the start of construction on its new \$15-million Agricultural Research Center in Raleigh, N.C. by planting trees to symbolize its commitment to growth. Joining in the ceremonies were from left, George Watts Carr, Jr. of the Research Triangle Park Foundation, Gov. James B. Hunt of North Carolina, Detlef Dibbern of BASF America, and Dr. Hans Detzer of BASF AG in West Germany.

READ LANCASTER FARMING FOR COMPLETE AND UP-TO-DATE MARKET REPORTS

Elevator receives award

BLOOMINGTON, Ill. — The Portable Elevator Division of Dynamics Corporation of America is the proud recipient of a Silver Medal Award of Merit for its Glencoe Soil Saver given by the Royal Agricultural Society of England.

The Honorable Mrs. Anne Armstrong, former United States Ambassador to the Court of St. James, made the presentation to W. A. Matheson, Jr. President of

Portable Elevator and Michael R. Harley, Sales Director of OPICO Ltd., distributor in England for Portable's Glencoe and AMCO lines of products as part of the opening ceremony of the 1984 Royal Show at Stoneleigh.

The Glencoe Soil Saver, first introduced in the United States in 1969, is a primary tillage tool used to combine one-pass tillage in nearly all crop residues with highly effective erosion control

and it has been widely accepted by American farmers. In England, the Soil Saver is used mainly for breaking stubbles and incorporating straw. The soil is lifted, turned and thrown sideways leaving ridges to encourage bacterial decomposition.

Portable Elevator operates factories in Glencoe, Minnesota; Bloomington, Illinois; and Yazoo City, Mississippi producing its Glencoe, Little Giant and AMCO brands of agricultural equipment.

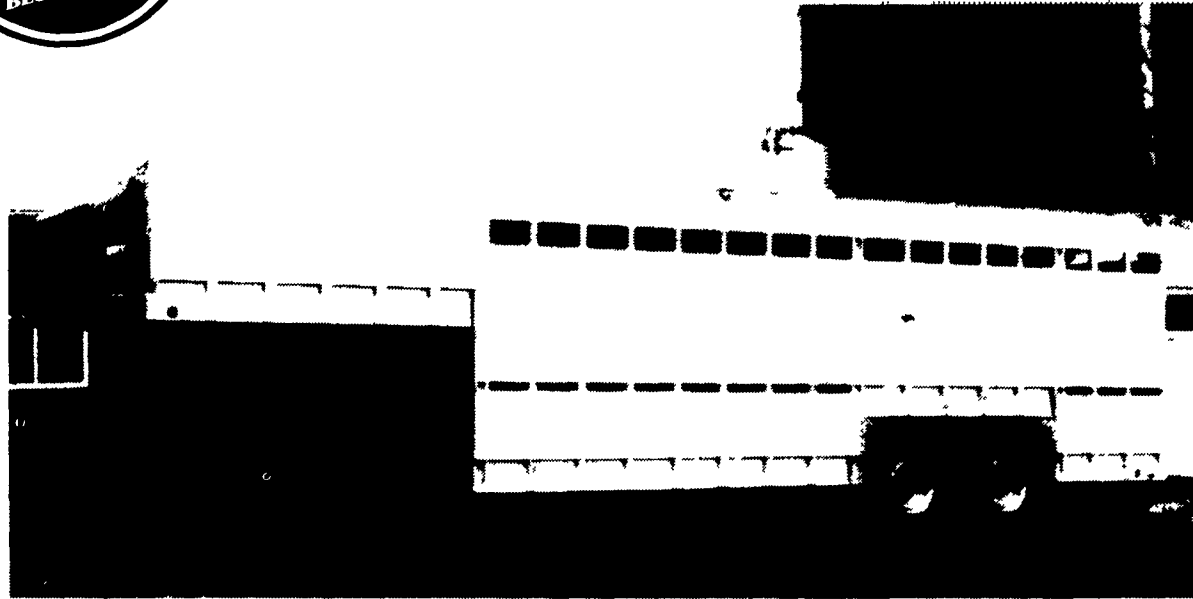
CHEMGRO

- 12 Tractor Spreaders
- 4 Spreader Trucks
- 2 Bulk Nurse Trucks
- 2 Crop Spraying Trucks

WE DON'T SELL SERVICE... IT COMES FREE WITH THE SALE

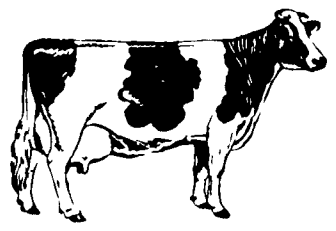
CHEMGRO FERTILIZER CO.
Box 218
East Petersburg, PA 17520
Phone: (717) 569-3296

EBY ALUMINUM GOOSENECK TRAILERS



20' Gooseneck Trailer

A versatile, lightweight, Eby aluminum stock trailer is built to provide years of maintenance free service. An Eby trailer is custom built to fit your individual hauling needs - No mass production! We use only quality components and strong alloy aluminum to manufacture what may be the last trailer you'll ever buy.



See Our Trailer At
Ag Progress Days
Aug. 21, 22, 23
Loc: West 8th St.

- **LIGHTWEIGHT** - Eby stock trailers are 25-35% lighter than comparable steel trailers. Less weight means better fuel mileage or increased payload.
- **MAINTENANCE** - Eby aluminum trailers won't rust. Welding and painting can cost you dollars in down time and repairs.
- **DURABILITY** - Eby trailers are built tough. Quality components and 6061 alloy aluminum provide the ruggedness required in a livestock trailer.

BUY DIRECT FROM THE MFG. AND SAVE \$\$\$

GENERATORS
1 to 1,400 KW

MARTIN MACHINERY
P.O. Box 35 - Martindale, PA 17549
215-445-4585
Telex 522372 IP-A-HOWD

M.H. EBY, INC.

Box 127, Blue Ball, PA 17506 717-354-4971