

S & S SILO REPAIR WE DO

- * Most Any Kind of Stave Silo Work
 - * Tear Down & Rebuild Stave Silos
 - * Replastering
 - * New & Used Extensions
 - * New & Used Roofs & Chutes
 - * Unloaders
 - * Wooden Calf Hutches
 - * Fiberglass Feed & Silage Carts
 - * Install Silage Distributors & Fill Pipes
 - * Repair Level Flo Silage Distributors
 - * Silo Doors - Most Any Kind
- We Buy Some Stave Silos

SHOTCRETE RELINING
Stronger Than Plaster
Seal & Strengthen Your Silo
With Shot Crete
5 Year Unlimited Guarantee

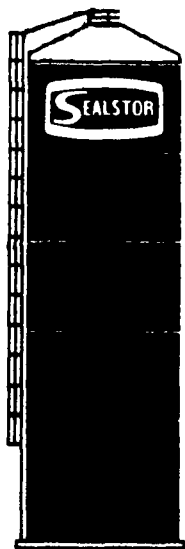
All Silo Work Done From The End Of
October Until The End Of May
Will Be Done At A Reduced Cost.
We Cover A Wide Area
Box 423 RD 1 Gap, PA 17527
Answering Service 717-768-3052
215-273-3993

SILOS & UNLOADERS

SILOS & UNLOADERS

McNAMARA SILO

Sales & Service
R.D. 1, Wayland Rd, Meadville, PA 16335
(814) 724-5011



- New and Used Glass-Lined Structures
- 3 Yr. Warranty On New Unloaders Parts and Labor
- 2 Yr. Warranty On Structures
- Spring Discounts Now In Effect
- Sales and Service Since 1971
- Financing Available 9%

LAIDIG
Best name in
BOTTOM UNLOADERS

BUILDINGS & SUPPLIES

BUILDINGS & SUPPLIES

GRAIN EQUIPMENT

Curtis Marburger Hand Cut Potter County FLAGSTONE

Wallstone, veneer, coping, treads,
sills - tile, mantels, patio, irregular.
Quality Stone.
Dealers Inquire
Elizabethtown, PA
717-367-3692

21x50 Herd King HMC
Unit Ladic unloader used
4 seasons, went to Ag Bag
system, 703-434-4298.

For Sale - Hemlock and
Hard wood lumber, trailer
load lots We will deliver
717-494-0550.

For Sale - Large barn, 2
chicken coops. Highest
bid. Must be removed.
717-285-5453.

SPECIAL - Asphalt and
fiberglass shingles,
\$12.00 per square, all colors
in stock. Off colors
\$5.00 per square Tar
Paper \$3.00 a roll.
Cramer's Farm
717-567-6782.

For Sale - Tobacco shed,
28' x 80', good condition.
Make offer Buyer takes
down. Barn 23' x 32' with
corn crib each side with
13' x 32' garage attached
Phone 717-653-8641.

150' curb forms, \$150.00
717-397-1186 before 11
AM and after 6 PM.

Barn For Sale - Located in
Susquehanna Twp. Must
be removed by October
1st. Easy Access. \$300
Call 717-545-7607. Har-
risburg.

All Steel Buildings on hand
in inventory Going fast.
40x46 - was \$5,758, now
\$4,606. 50x60 - was
\$8,420, now \$6,685 Call
Harold at 717-597-3668
or 717-597-7476.

Lumber For Sale - Ratters
and beams
717-284-4601.

For Sale - old pine boards,
paint on one side, 1 inch x
1 foot x 16' long, very
good condition, approx
400 board feet. Elmer
Lantz, RD 1, Box 266,
Kinzers, PA 17535.

For Sale - approx. 500
9x18 Peach bottom Slate
Jacob B. Ebersol, Box
128, R.D. #2, Peach
Bottom, PA.

75 Pieces 3x12-16 & 18'
long, 20 cents board feet,
25 used free stalls, good
condition 717-529-2512
Lanc. Co.

2 Quonset steel buildings
for sale: (1) 20'x40', \$800
or best offer; (1) 40'x100',
\$3,500 or best offer.
Buildings are
disassembled 215-856-
7773

For Sale - California pellet
mill, Roughinger model,
capacity 9 ton per hour,
good condition,
717-865-6611

(1) American automatic
batch dryer #2412T com-
pletely rebuilt; (1)
American automatic batch
dryer #1706T good shape
Call 302-492-3688.

1-3000 bushel Baughman
grain bin with a fan,
unloading auger and grain
distributor, excellent con-
dition, used 2 seasons
Carbon Co. Call evenings
215-377-4549

For Sale - Used Brock
grain bin, 24', 8 rings with
walk in door 6" unload
auger, 24' diameter chan-
nel lock floor and
transport auger. Call Lan-
caster ASCS office for
terms and conditions
717-397-6235.

**STONY KNOLL
FARMS**
Pre-Harvest Special
Motomco Moisture
Tester & Scale
Call Evenings
301-778-0935

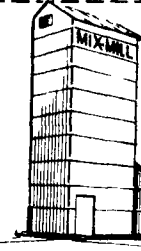
GRAIN EQUIPMENT

FOR SALE - 75' Starline
Bunk feeder & Grove
Forage Box. 315-549-
8887.

Used Butler type bin, 12'
diameter, 30' high, (8-32"
rings) including 8' cone.
Silo type roof, \$1,000.
Mifflin Co. 717-248-4373,
9-5 weekdays.

Dryer MC600 continuous
PTO drive 600 bushel,
\$1750. 215-343-2444,
215-343-0156.

Used Habco batch grain
dryer with PTO, 500 bus.
capacity. Phone 215-562-
7218.



New Four
Compartment
40 ton feed factory
\$8,100

HERSHEY FARMS
R.D. 1 Box 139
Marietta, PA 17547
717-653-8783

PENN-MAR AGRI

RD 2, Box 424
Palmyra, PA 17078
717-838-5754
Nelson L. Ziegler

Complete Dismantling and Re-erection of Used Harvestore® Structures

We Can Offer

- * New Bolts, Nuts & Washers
- * New Steel or Epoxy Floors
- * Flag or Farm Name Sheets
- * Extensions
- * New Supreme Bottom Unloaders for Forage or Grain
- * Rebuilt Goliath or Hercules Unloaders

Quality Work Guaranteed

2028 SAA 2040 SAA w/Roller Mill
2038 Spartan 2042 SAA
2038 SAA 2060 Rebuilt Goliath

Power Sweeps And Roller Mills Available

PARTS AND SERVICES for Harvestore® Unloaders and Structures

Services Available:

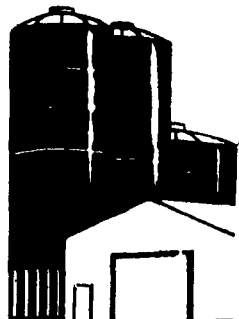
1. Service Maintenance, Dig-Outs, Long & Short Arm, Etc
2. Pressure Testing Structure & Bags
3. Resealing
4. Complete Unloader Rebuilding

Parts for Unloaders.

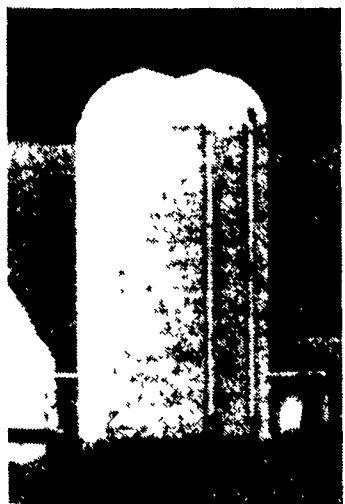
Cutter and Conveyor Chains, Hook Assemblies,
Sprockets, Bearings, Seals, Cutter Arms,
Forks, Backbones, Discharge Housing
Unloader Doors, Motors, belts, etc

Parts for Structures:

Breather Bags, Vent Flaps, Access Doors,
Roofs, Structure Sheets, Sealer, Steel
Floors & Plates
Blower Pipe - Spiral, Plastic or Straight
Center Fill Pipe - 9" or New Style 12"



Sollenberger Silos SOLID 6" CONCRETE WALLS



- * TOP UNLOADING SILOS
- * BOTTOM UNLOADING, OXYGEN-CONTROLLED SILOS FOR HAYLAGE
- * BOTTOM UNLOADING, OXYGEN-CONTROLLED SILOS FOR HIGH MOISTURE GRAIN

- JAMESWAY
- LAIDIG

Sollenberger Silos Corp.

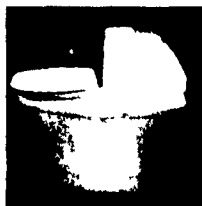
A Nitterhouse Company
Box N Chambersburg, PA 17201 (717) 264-9588
A Producer of Quality Concrete Products Since 1923

BUILDINGS & SUPPLIES

THE DRY TOILET

Self-Contained Composting Toilet
Needs No Water Or Chemicals

Replaces conventional septic systems with a self contained bioconversion appliance • Eliminates wastewater discharge
• Constructed from rugged stainless steel and non-porous plastic • Features positive venting for odor less operation • Easily maintained • The compact HUMUS 80 occupies only 25"x33" of floor space



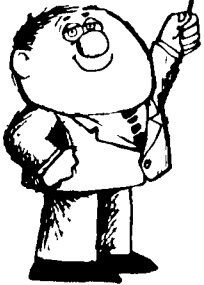
Pump Services, Inc.

157 Knoxlyn Rd., Gettysburg, PA 17325
(717) 334-0224 or (800) 242-3909

A LESSON WELL LEARNED...

Lancaster Farming's
CLASSIFIED ADS
GET RESULTS!

Phone 717-394-3047
or 717-626-1164



DAIRY EQUIPMENT

DAIRY EQUIPMENT

WIC

WOLE

**US AGRI-
SYSTEMS**
(301) 398-2948

TOLL FREE 800-222-2948

- Bedding Choppers
- Silage Carts
- Manure Tanks
- Liquid Manure Pumps
- ELECTROMIX
- Barn Cleaner Chains
- Free Stalls
- Self-Locking Panels
- Comfort Stalls
- Gutter Grates
- Cow Mats

DELAVAL BUCKET MILKERS

- Complete - Ready to Milk
\$445 if you purchase two or more units

DeLaval • Bou-Matic • Westfalia
60 lb. Milk Pails \$175

Heavy stainless steel - Use 2 weeks. If
not staisfied, return for full refund

These hard-to-beat prices good till
August 31; so act NOW.

For more information, write

Emanuel S. Zook

145 Peters Rd., Kinzers, PA 17535

4 miles east of Intercourse till Spring Garden. Turn
left on Snake Lane till Peters Rd. Turn left, first
farm