

TRUCKS & TRAILERS

NEED CASH? We buy unwanted trucks and parts, scrap aluminum of any kind. Wrecked dumps, vans, flats, tank trailers, etc. Call 215-944-9871 (evenings).

STORAGE TRAILERS FOR RENT - 40 ft., nice, available immediately, delivered. Office trailers also available. 301-771-4529.

For Sale - 6 cylinder Perkins 354 Diesel, GM 478 Diesel, \$875. Wanted - all wheel drive truck with 10x20 rubber. 717-866-2091.

For Sale - 22'x6' steel gooseneck, '77 GMC 4 wheel drive, taking offers. Phone 717-354-4971.

For Sale - 69' IHC cab over, 26' straight bed. Good hay truck. 717-366-2308.

1979 Chevy C50 steel body dump, 4 speed, V8, PS, PB, new paint, good rubber. 717-692-2086. Coleman's.

1974 Tibrook 28' aluminum dump trailer, 10x22 tires, good condition. 717-998-8831 or 717-998-2057.

1974 Chevy C65 18' dump body, V8, PS, PB, nice. 717-692-2086. Coleman's.

1977 Ford F-750 dump truck. 5 + 2 sp., 391, V-8, air brakes, power steering, new paint, \$6,500. Bucks Co. 215-297-8354.

U600 Model Mack single axle dump 673, Duplex, good rubber. 717-692-2086. Coleman's.

'83 Ford F350 dual wheel 1 ton pickup, 460 4 speed, PS, PB, air, AM-FM, radial tires, 2 tone paint, gooseneck hookup, 8,000 miles, like new, \$11,900. 717-733-2873.

1977 Ford F350 Stake dump, auto., PB, good rubber. 717-692-2086. Coleman's.

'83 Chevy heavy duty ¾ ton 4x4 pickup, 350 4 speed, PS, PB, radial tires, 8600 GVW, regular gas, 18,000 miles, \$9,350. 717-733-2873.

1978 Chevy C60, 4 speed, V8, PS, PB, 18' Van body, new paint, good rubber. 717-692-2086. Coleman's.

'83 GMC heavy duty ¾ ton 4x4 w/Morrisville utility body, 350 4 speed, PS, PB, 8600 GVW, \$9,300. 717-733-2873.

'82 Dodge ¾ ton 4 WD Club Cab pickup, 360 4 speed, PS, PB, lockout hubs, sliding rear window, 8500 GVW, \$9,500. 717-733-2873.

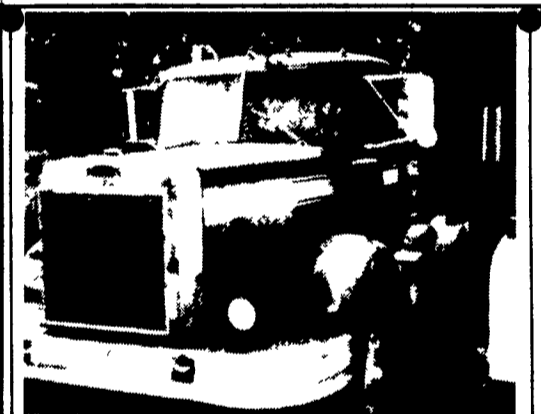
TRUCKS & TRAILERS



71 IHC Diesel Tandem 20 ft. Flat Bed, 5 & 4 Trans., \$6900
Curry Supply
Curryville, Pa.
814-793-2829



White Truck 20 bed 96,000 original miles 26,000 GVW \$2500
Curry Supply
Curryville, Pa.
814-793-2829



72 Auto Car Truck Tractor, 250 Cummins, 10 sp. \$7500
Curry Supply
Curryville, Pa.
814-793-2829

TRUCKS & TRAILERS



1950 Reo Army Truck 6x6 6 cyl. gas \$2000
Curry Supply
Curryville, Pa.
814-793-2829



5500 Gallon Stainless Tanker \$4500
3500 Gallon Rubber Lined Acid Trailer, \$3900
Curry Supply
Curryville, Pa.
814-793-2829

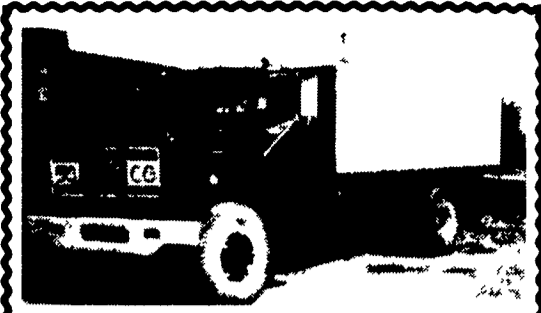
1984 CONVERSION VANS
• We Cannot Be Under Sold On Quality
THE SALE IS ON!

- 1981 FORD F250 UTILITY BODY, 8 Cyl., Auto., PS, PB, Air, Like New... \$8995
- 1981 GMC 2500 UTILITY BODY, 8 Cyl., Auto., PS, PB, Factory Air, White Paint, Sharp... \$8,995
- 1980 CHEVROLET SILVERADO CREW CAB, C-30, 4x4, Auto., PS, PB, Cruise Control, Air, AM-FM, 29,000 Orig. Miles, Free Wheeling Hubs... \$10,995

JEEPS - 1982, 1981, 1979 Soft Tops (One With Plow)... Call For More Information!

1974 GMC MOTOR HOME, 260, Painted Desert, Self-Contained, Hot & Cold Water, Air Conditioning, Generator, Sleeps 6, Formerly Owned & Meticulously Maintained By General Motors Executive.
Priced To Sell... \$23,900

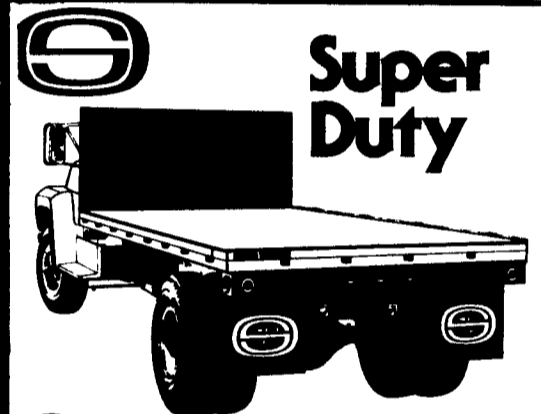
Rhodes Oldsmobile
Gilbertsville, PA
Call toll free: 1-800-362-7655



75 GMC 427 big block, 20 bed, air brakes, \$8500
Curry Supply
Curryville, Pa.
814-793-2829

- 1978 Chevy pick-up short bed, 6 cylinder, with cap
- 1972 IH Scout - REAL NICE, only 60,000 miles, 4x4.
- (2) 1979 Diplomats, 4 doors w/air.
- 1978 Ford Fairmont Coupe, 4 speed, SPECIAL \$2795.
- 1980 Champ Coupe hatchback, automatic.
- SPECIAL- Brand new '84 Rampage pick-up, \$6995.
- (2) Colt wagons.
- (2) 1983 Aries 4 door w/air, low miles.
- 1972 Datsun Pickup, real nice.

PETTICOFFER DODGE, INC.
Route 230 East Next to Shopping Center
Elizabethtown, PA
PHONE 717-367-1808



Platforms and Bulkheads

Ideal for lumberyards, contractors, utilities, oil field operations and fork lift applications involving heavy loading. The Omaha Standard platform is a full 96" wide and available in standard lengths from 12'6" to 26'6". Floor options include wood, steel or steel over wood. Heavy duty structural steel channel throughout, with 6" outrail and 4" cross sills. Stake pockets of 3/16" steel placed on 24" centers and sized to fit 2 x 4" stakes, with a steel banding rail welded to the outside of the stake pockets for securing the heaviest loads. Steel stake racks are also available. The full clearance bulkhead is constructed with 4" channel stakes and 10 gauge steel and features a full width steel mesh window. Tackle the tough jobs, team up with Omaha Standard's Super Duty Platform and Bulkhead.

FARMERSVILLE EQUIPMENT INC.

RD 4, East Farmersville Road
Ephrata, PA 17522
Located in the Village of Farmersville,
Lancaster County
717-354-4271

Omaha Standard

'83 Chevy C10 4x4 pickup, 305 4 speed, PS, PB, radial tires, \$8,750. 717-733-2873.

'82 Toyota D pickup, long bed, 5 speed, AM/FM, sliding rear window, \$4,450. 717-733-2873.

FORD FACTORY TRUCK CAP, \$350/offer. 717-235-7416.

Dump Trailer - Flat bed 7'x12' on Knowles running gear, new 1983 never used, \$1,500. 717-235-7416.

For Sale - 1974 GMC, 22' flatbed, rebuilt engine, excellent condition. Call evenings. 717-943-2258.

Two IH 1970 Loadstar 1600 and 1700 Series trucks. Both for \$1000. Carbon Co. Call evenings. 215-377-4549.

REAL ESTATE

97 acre farm in Sullivan County. Large barn, farm shop, 2 car garage and other outbuildings. 8 room farmhouse with wood, oil, hot water heat. 2 ponds and stream. \$98,000. Additional acreage and equipment available. 717-924-3293.

Dairy Farm For Rent. Equipped facilities for 42 cows. 4 bedroom house available, brick. 155 acres of land. 301-686-8082 or 717-677-9590.

Fulton Co., PA. 96.4 acre farm with stream, great for fishing. Barn equipped for milking or would be great for beef cattle. Has new house which is ½ finished. Call Owner. 717-987-3647.



- STRUCTURAL INTEGRITY
- QUALITY CONSTRUCTION
- DESIGN INNOVATION

E-Z DUMPER®

DUMP UNIT FOR PICKUP TRUCKS SAVE TIME...LABOR...MONEY

DIRECT FROM FACTORY
\$1,045

The E-Z DUMPER is hydraulically operated and is powered by the 12 volt truck battery. The safe removable key switch is standard equipment. The dump angle of 47° assures quick and clean unloading. The removable tailgate can be opened from the top or bottom for easy flow control.

Designed for do-it-yourself installation - the E-Z DUMPER comes ready to install, including hydraulic fluid. Most pickup trucks require no alterations. Just slide the E-Z DUMPER and secure with clamps using existing bolts and holes. Installation is fast and simple. Dump over 4,000 lb. of firewood, gravel, topsoil, coal, corn, mulch, etc. in seconds.

CALL TOLL FREE 1-800-248-6000
PA 1-800-842-4000

JERR-DAN CORP.
1080 HYKES ROAD, GREENCASTLE, PA. 17228